



Sea Scout / Community Building  
Graphic Attachment to Landscape Assessment Report

26 April 2023

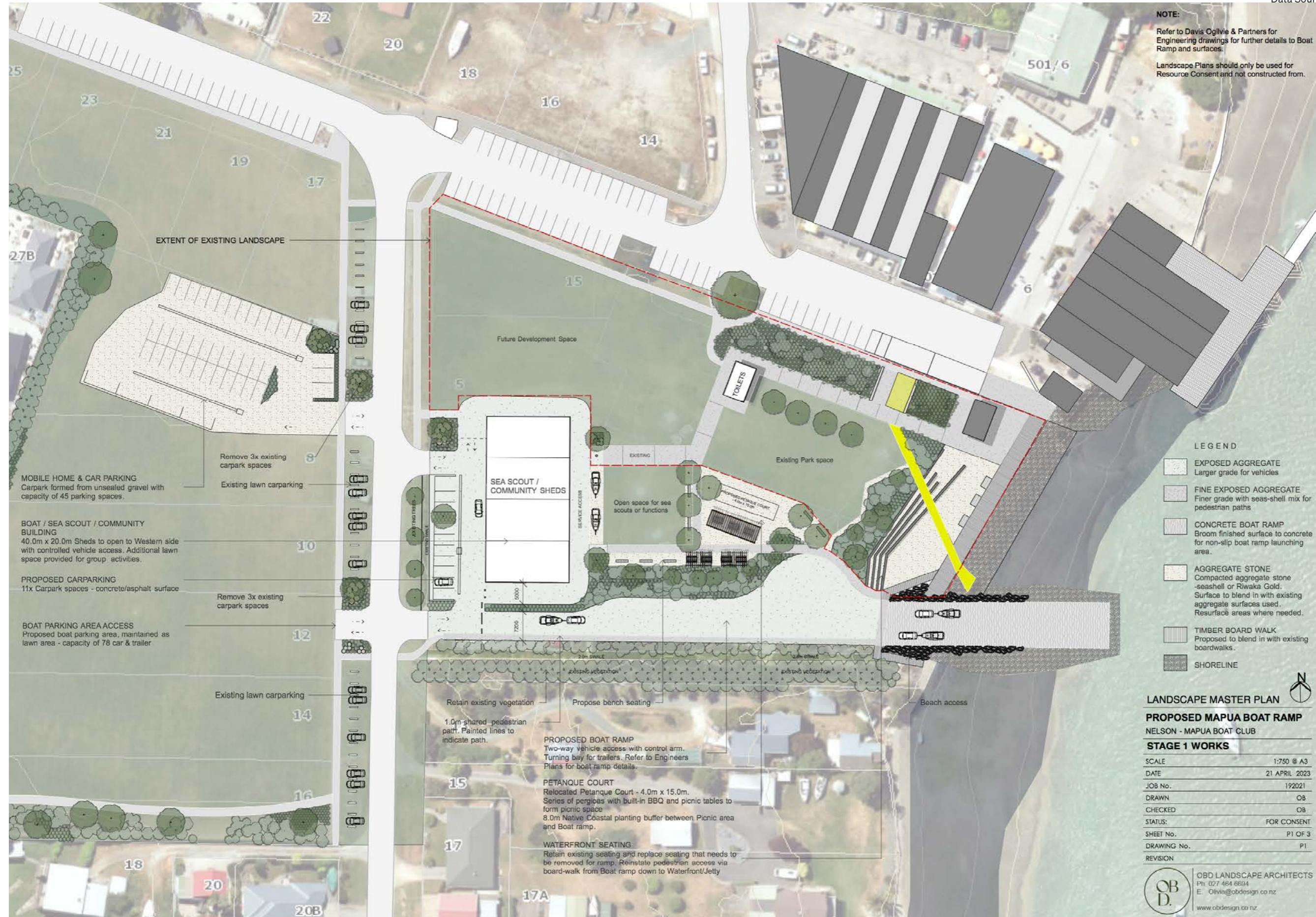


# General Arrangement Plan





Not to Scale - To Fit Page

Data Source: OBD Landscape Architects



# Local Context and Viewpoint Location Plan

Legend

	Proposed Site
	Viewpoint Photograph Location



Scale 1:2000 @ A3

Data Source: topofthesouthmaps.co.nz



# Viewpoint Location Photograph 1



Viewpoint Location Photograph 1: Existing view from ferry landing on Rabbit Island towards Site (distance of 330-410m)



Disclaimer: Imagery is an artistic impression - to be used indicatively

Viewpoint Location Photograph 1: Proposed view from ferry landing on Rabbit Island towards Site (distance of 330-410m)

# Viewpoint Location Photograph 2



Viewpoint Location Photograph 2: Existing view from the end of wharf towards Site (distance of 90m from the boat ramp and 160m from the Sea Scout Building)



Disclaimer: Imagery is an artistic impression - to be used indicatively

Viewpoint Location Photograph 2: Proposed view from the end of wharf towards Site (distance of 90m from the boat ramp and 160m from the Sea Scout Building)

# Viewpoint Location Photograph 3



Viewpoint Location Photograph 3: Existing view from Iwa Street towards Site (distance of 85m)



Viewpoint Location Photograph 3: Proposed view from Iwa Street towards Site (distance of 85m)

# Viewpoint Location Photograph 4



Viewpoint Location Photograph 4: Existing view from Aranui Road towards Site (distance approx. 150m)



Viewpoint Location Photograph 4: Proposed view from Aranui Road towards Site (distance approx. 150m)



# Viewpoint Location Photograph 5



Viewpoint Location Photograph 5: Existing view from Tahi Street towards Site (distance of 60-70m)



Viewpoint Location Photograph 5: Proposed view from Tahi Street towards Site (distance of 60-70m)

# Viewpoint Location Photograph 6



Viewpoint Location Photograph 6: Existing view from within Waterfront Park



Viewpoint Location Photograph 6: Proposed view from within Waterfront Park (distance of 50m)

ROUGH MILNE MITCHELL  
LANDSCAPE ARCHITECTS

**Christchurch**  
Level Two, 69 Cambridge Terrace  
Christchurch 8013  
PO Box 3764 Christchurch 8140

info@rmmla.co.nz  
+64 3 366 3268

**Auckland**  
Level Two, 139 Victoria Street West  
Auckland CBD, Auckland 1010

info@rmmla.co.nz

**Dunedin**  
42 Stuart Street, Dunedin 9054

info@rmmla.co.nz  
+64 3 477 2030

**Wānaka**  
Level One, 24 Dungarvon Street,  
Wānaka 9305  
PO Box 349, Wānaka 9343

info@rmmla.co.nz  
+64 3 974 7940

**Nelson**  
Level One, 3 Haven Road,  
Nelson 7010

info@rmmla.co.nz

**RMM**

rmmla.co.nz