

### V3. Local knowledge Mapua channel @ low tide.

Valid 09 September 2021, max speed 15 Knots (kts) in channel (see over page), but please minimise wake!.

Max speed 5 knots South of the moorings area, (including the channel to Grossi Point).

**Lifejackets must be worn when crossing the sand bar!**



It is recommended that you transit  
between the floats and ideally ~2 hours  
either side of high tide depending  
on vessel draft

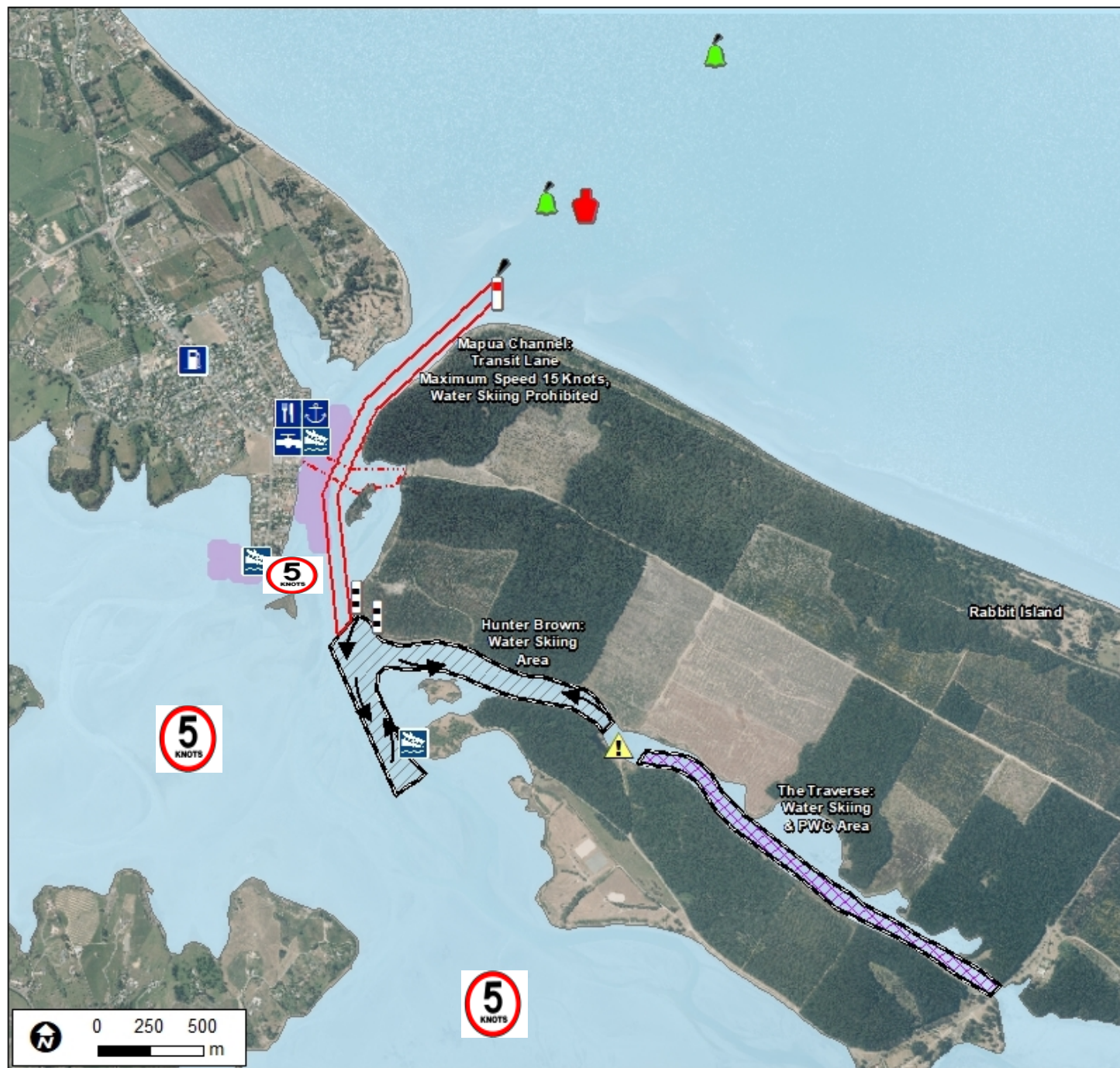
Tides times are available from the TDC Boating Safety Brochure  
(available at ramps and also at; [www.tasman.govt.nz/recreation/boating-fishing](http://www.tasman.govt.nz/recreation/boating-fishing))



Starboard  
Navigation  
Buoy  
41°14.390 S  
173°07.470 E  
(Chart NZ614)







Cadastral sourced from LINZ. Crown Copyright reserved. Creative Commons Attribution 3.0 New Zealand licence. Contact Tasman DC regarding Copyright on Aerial Photography. The information on this map is prepared for indicative use only and is not intended for definitive legal, location or formal reference purposes.



### Legend

- Water Skiing Direction of Rotation
- Infrastructure Corridor - No Anchoring
- Water-ski Landing Marker
- Starboard Lateral Fl (2) G 6s 3m 2NM
- Port Lateral Fl R 3m 2NM
- Fairway Buoy Fl G 1.3m 3NM
- Port Lateral Buoy (Shoaling Area)
- Boat Launching Ramp
- Food/Drink
- Jetty
- Petrol
- Water
- Former Causeway - Very Shallow
- Caution - Swing Moorings
- Transit Lane for Mapua Channel
- Shared High Speed Activity Area
- Water Skiing Area