

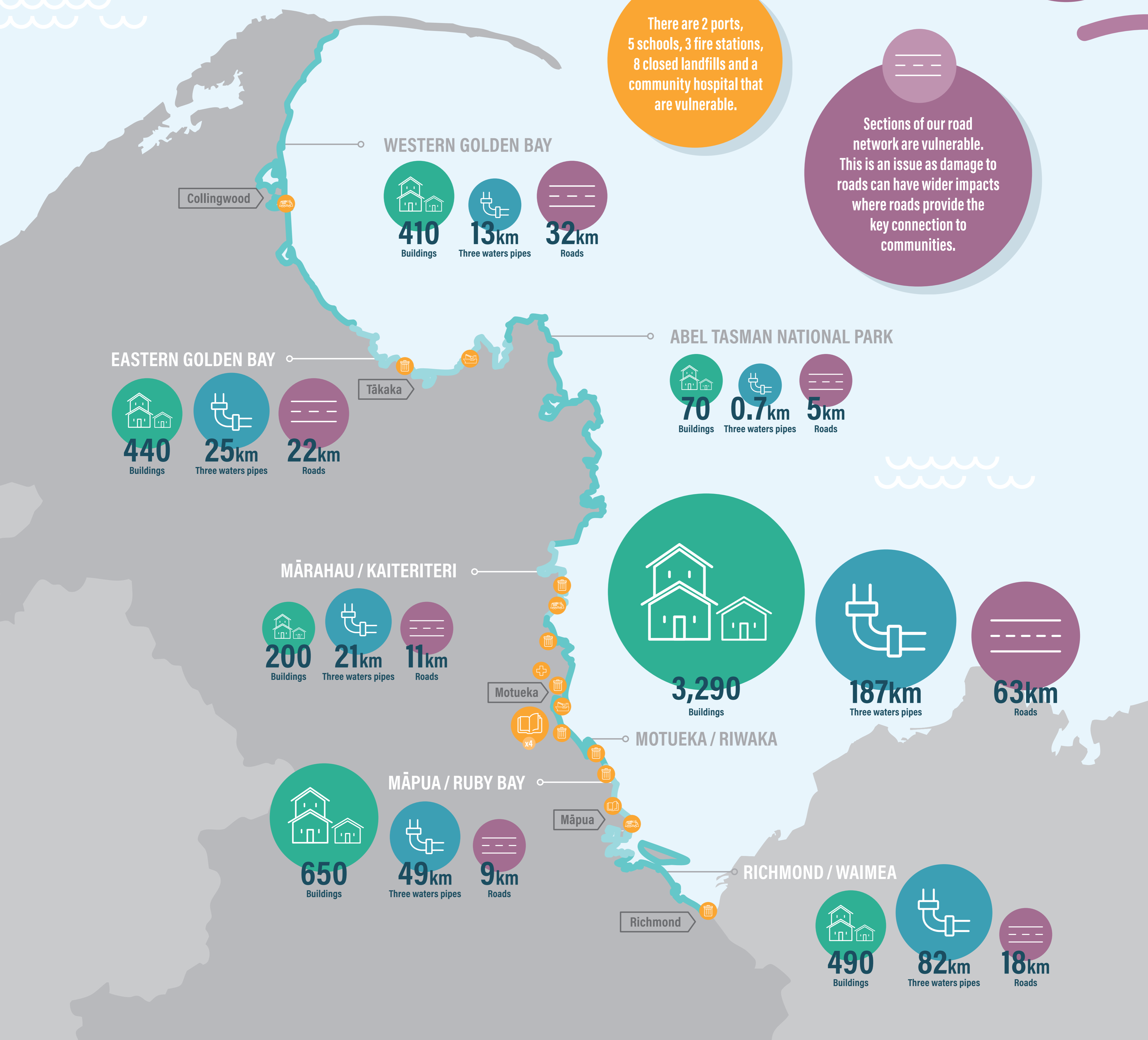
Coastal Management: What's at risk?

Our built environment

This poster illustrates some aspects of the built environment that are at risk from a 1% AEP coastal storm tide and 2m sea level rise. A 1% annual exceedance probability (AEP) event has a 1% chance of occurring in any year. This information comes from Council's Coastal Risk Assessment (2020) which outlines the vulnerability of Tasman Bay/Te Tai o Aorere and Golden Bay/Mohua to climate change impacts.

There are 2 ports, 5 schools, 3 fire stations, 8 closed landfills and a community hospital that are vulnerable.

Sections of our road network are vulnerable. This is an issue as damage to roads can have wider impacts where roads provide the key connection to communities.



Our risk assessment information draws on the methodology used for the Ministry for the Environment's National Climate Change Risk Assessment for New Zealand Arotakenga Tūraru mō te Huringa Āhuarangi o Aotearoa (2020).