



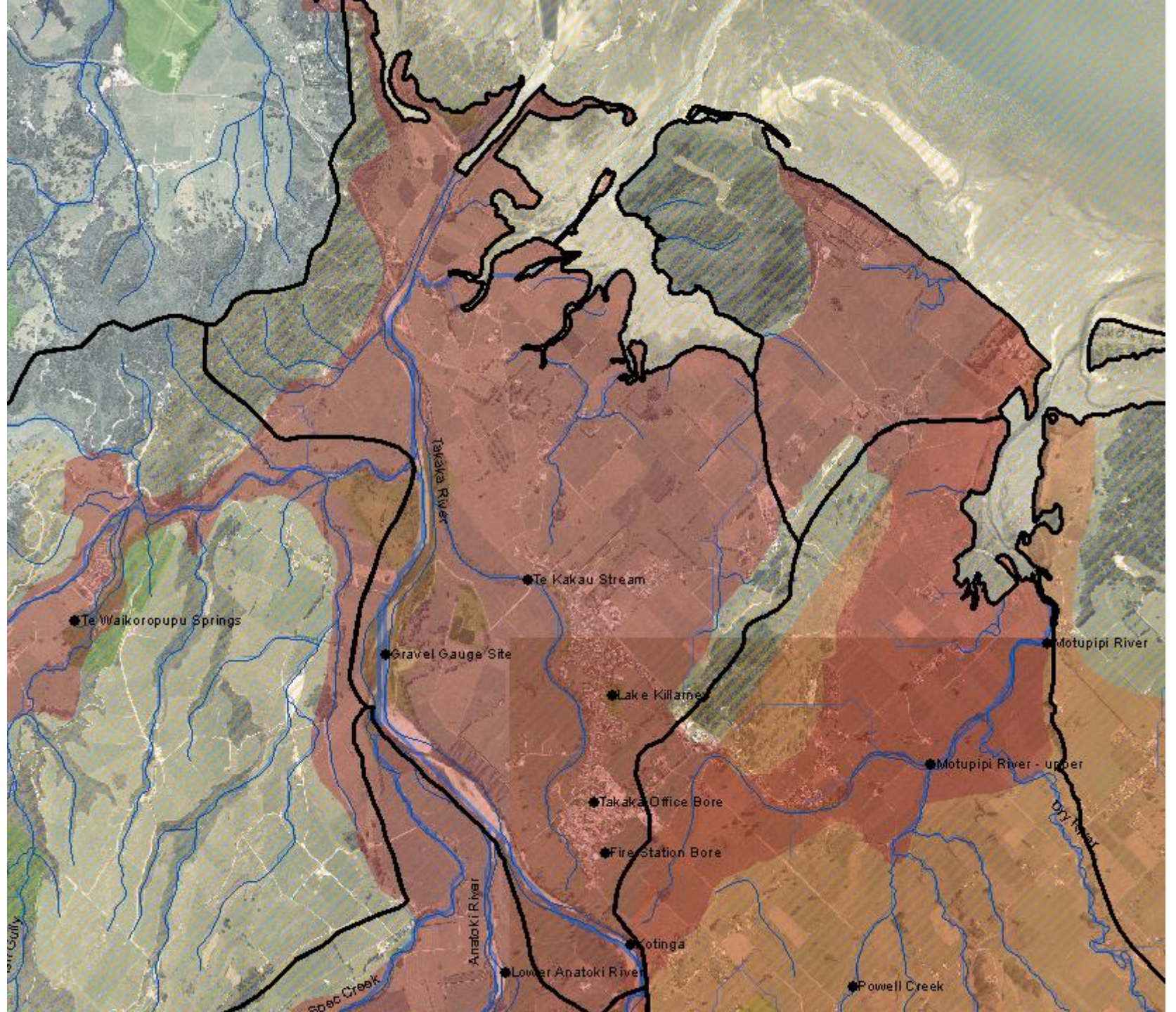
# Takaka Township Zone Issues and management options

Lisa McGlinchey and Trevor James  
19 February 2016

# Zone overview

- Four main waterbodies
  - Lower Takaka River
  - Takaka Gravel Aquifer
  - Lake Killarney
  - Te Kakau Stream
  
- Estuary streams



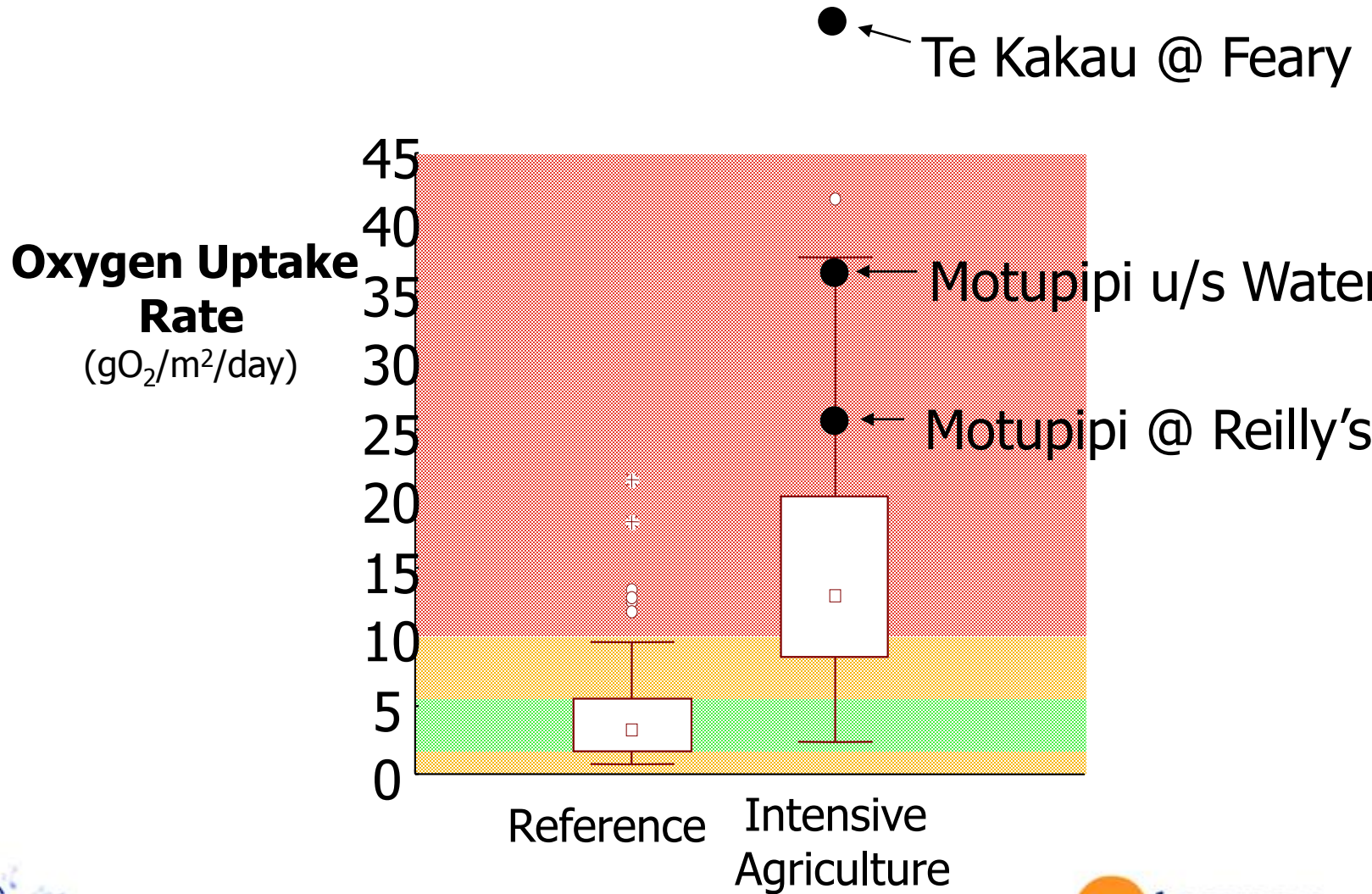


# Summary of Water Quality Issues

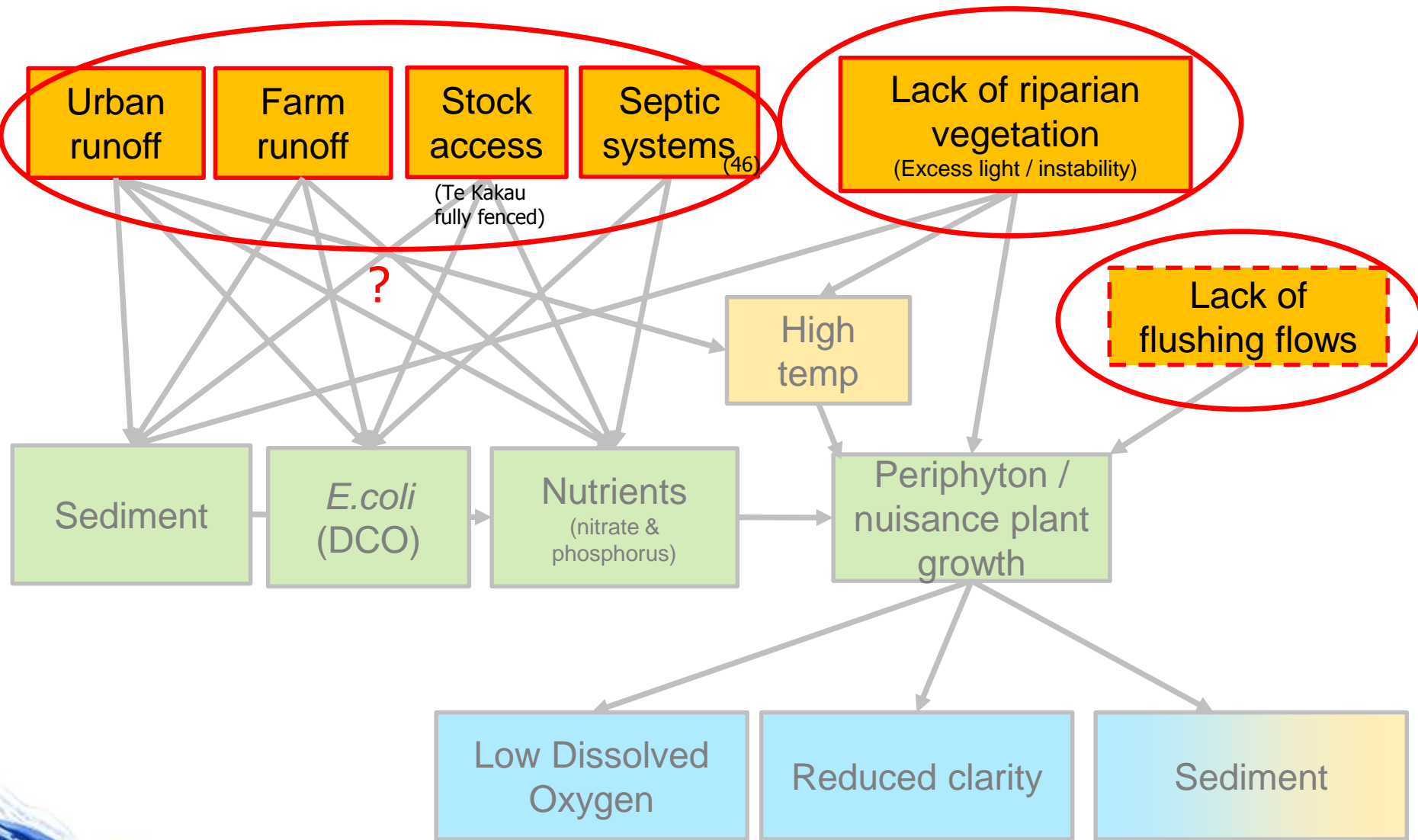
- No known issues in Takaka Gravel Aquifer
- Lower Takaka River
  - Catchment Sediment load and *E.coli* load
  - Wastewater treatment plant - past issues resolved
- Lake Killarney – urban inflows, phytoplankton
- Te Kakau Stream – similar issues to Motupipi River (only worse)
  - Lack of flushing flows
  - Riparian habitat loss
    - causing temperature
    - causing excess light
    - impacts on biodiversity, aquatic habitat / ecological values
  - Nuisance plant growth (aquatic weed *Lagarosiphon* & algal blooms)
    - causing dissolved oxygen issues, potential to reduce clarity
    - exacerbated by lack of flushing flows, excess light, high temps and slightly elevated nutrients



# Comparison with other rivers



# Key attribute drivers





An aerial photograph showing a vast expanse of water covered in a thick, dense layer of green algae. The water is a deep blue, and the algae forms a complex, textured pattern of bright green and yellowish-green. The text "Questions?" is centered in the middle of the image in a white, sans-serif font.

Questions?