

A SCIENTIFIC FRAMEWORK FOR SETTING FLOW AND ALLOCATION LIMITS - TAKAKA

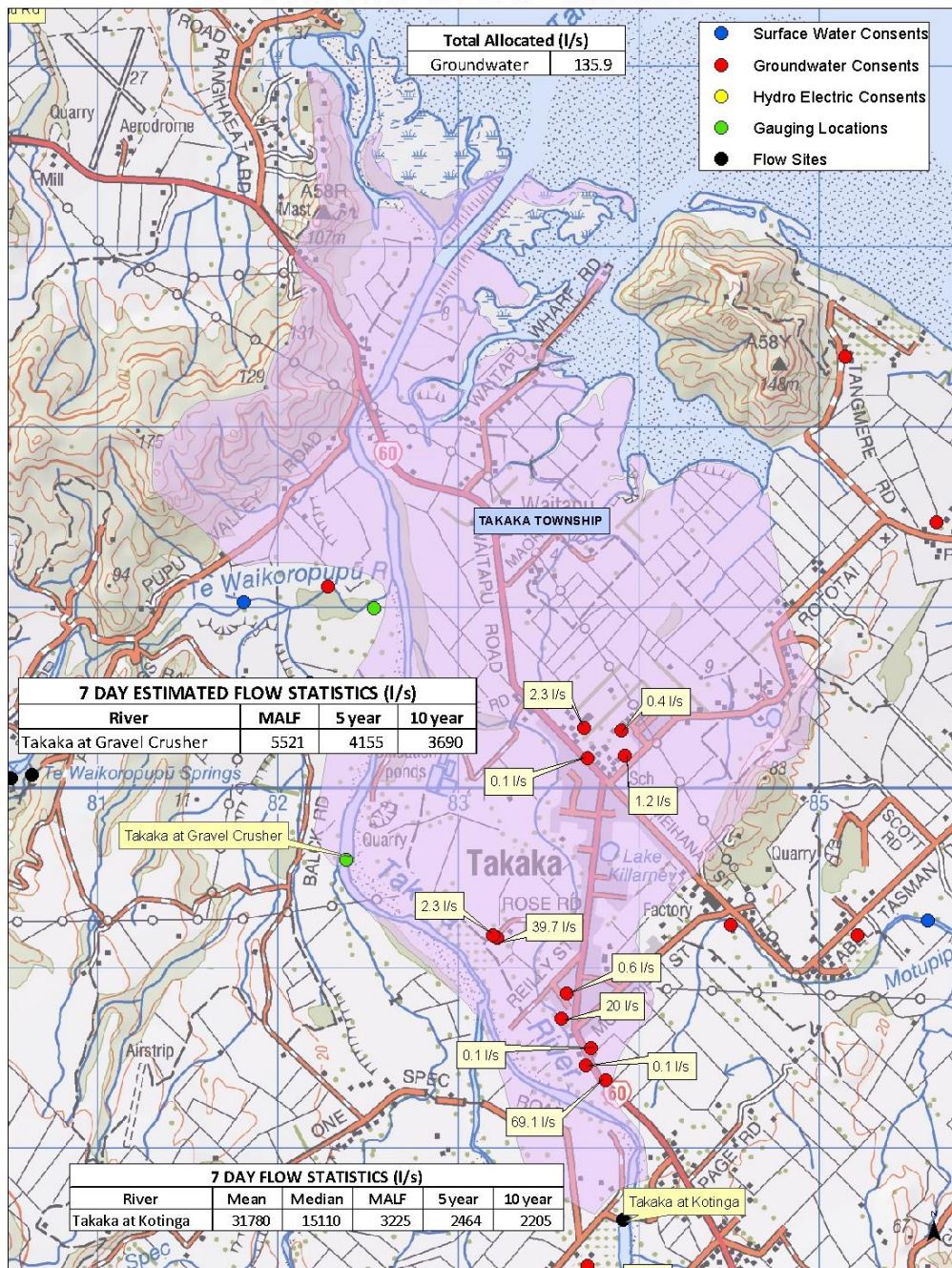
DR ROGER YOUNG

| 6 NOV 2015

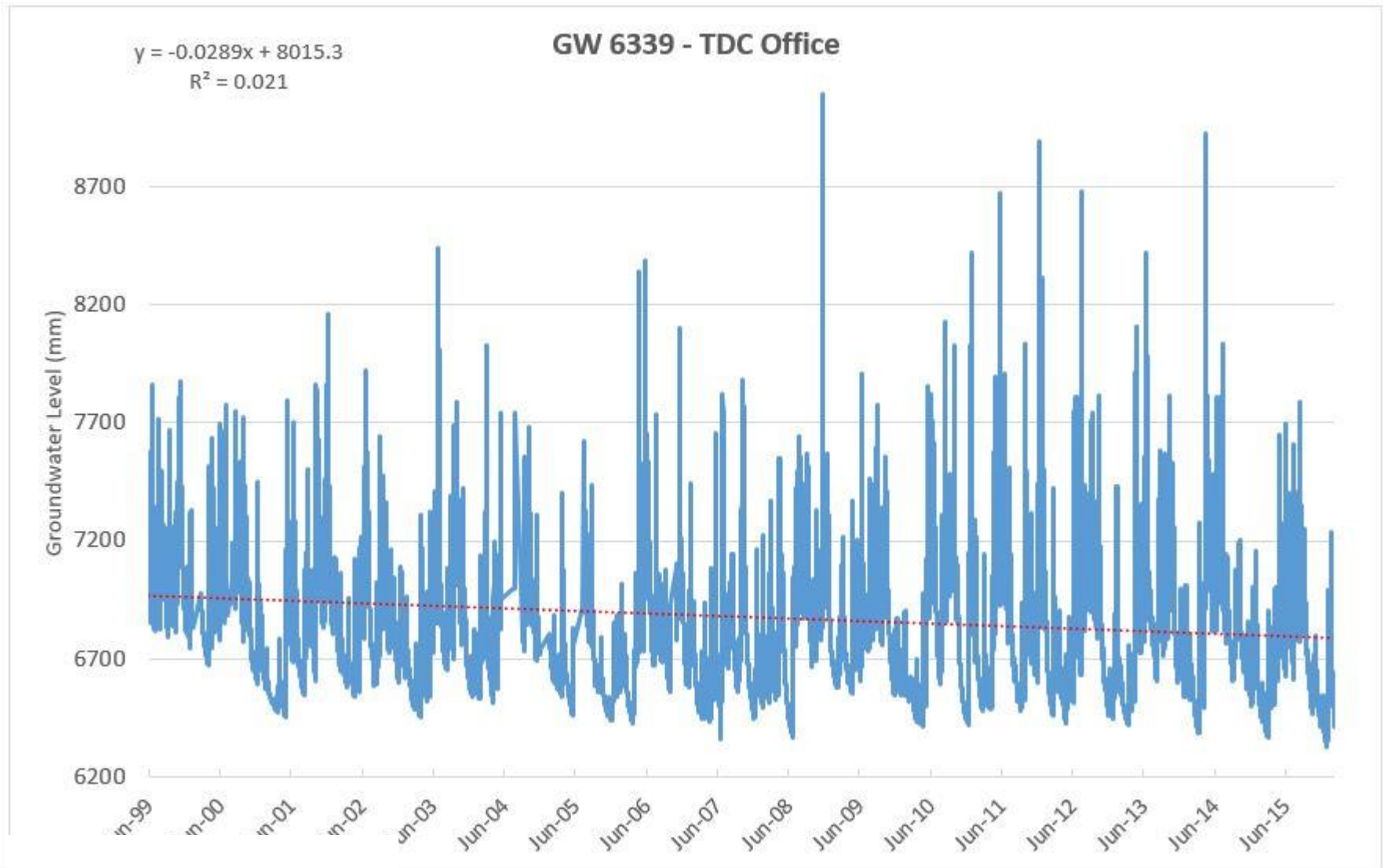


TAKAKA TOWNSHIP

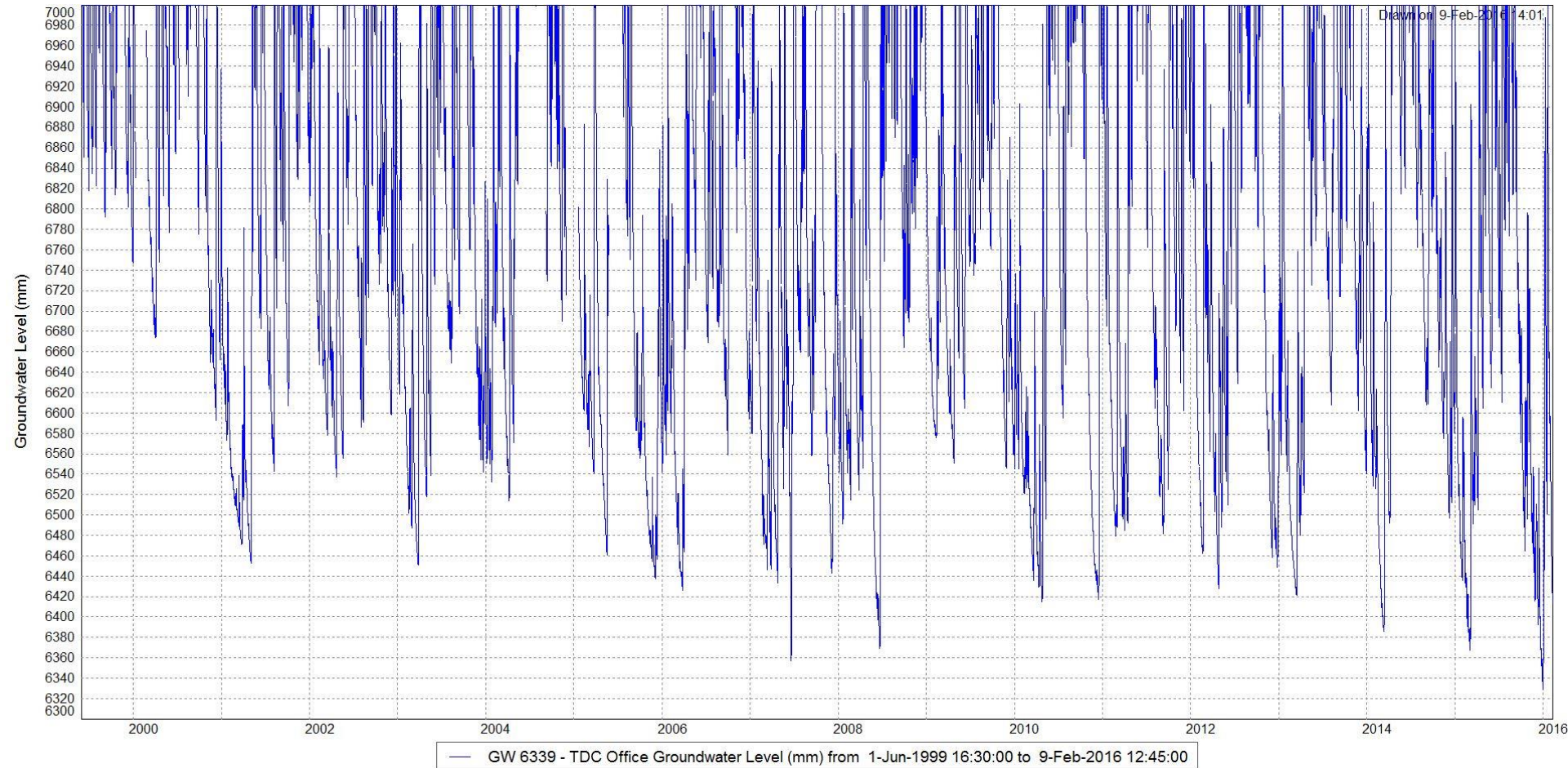
Takaka Township Zone Consents & Flow Statistics



RIVERBED DEGRADATION AFFECTING GROUNDWATER LEVEL



RIVERBED DEGRADATION AFFECTING GROUNDWATER LEVEL



TAKAKA TOWNSHIP ZONE

- Sensitive spring-fed estuarine area?
 - Lake Killarney
 - Degrading groundwater level
 - Linked with degrading riverbed level
 - 135 l/s of current takes (all groundwater)
 - Future urban demand
-
- Minimum flow 80% of 7 Day MALF at Takaka at Gravel Crusher?
 - Allocation limit = 10-20% of 7 Day MALF at Takaka at Gravel Crusher
 - Large potential allocation
 - Minimum flow = cease take? Rationing trigger?
 - Further monitoring of saltwater intrusion required



TAKAKA TOWNSHIP – SECURITY OF SUPPLY

Flow statistic	Flow (l/s)	Average number of days below this flow per year
7Day MALF	5521	
80% 7Day MALF	4417	
80% 7Day MALF + 10% allocation	4969	
80% 7Day MALF + 20% allocation	5521	