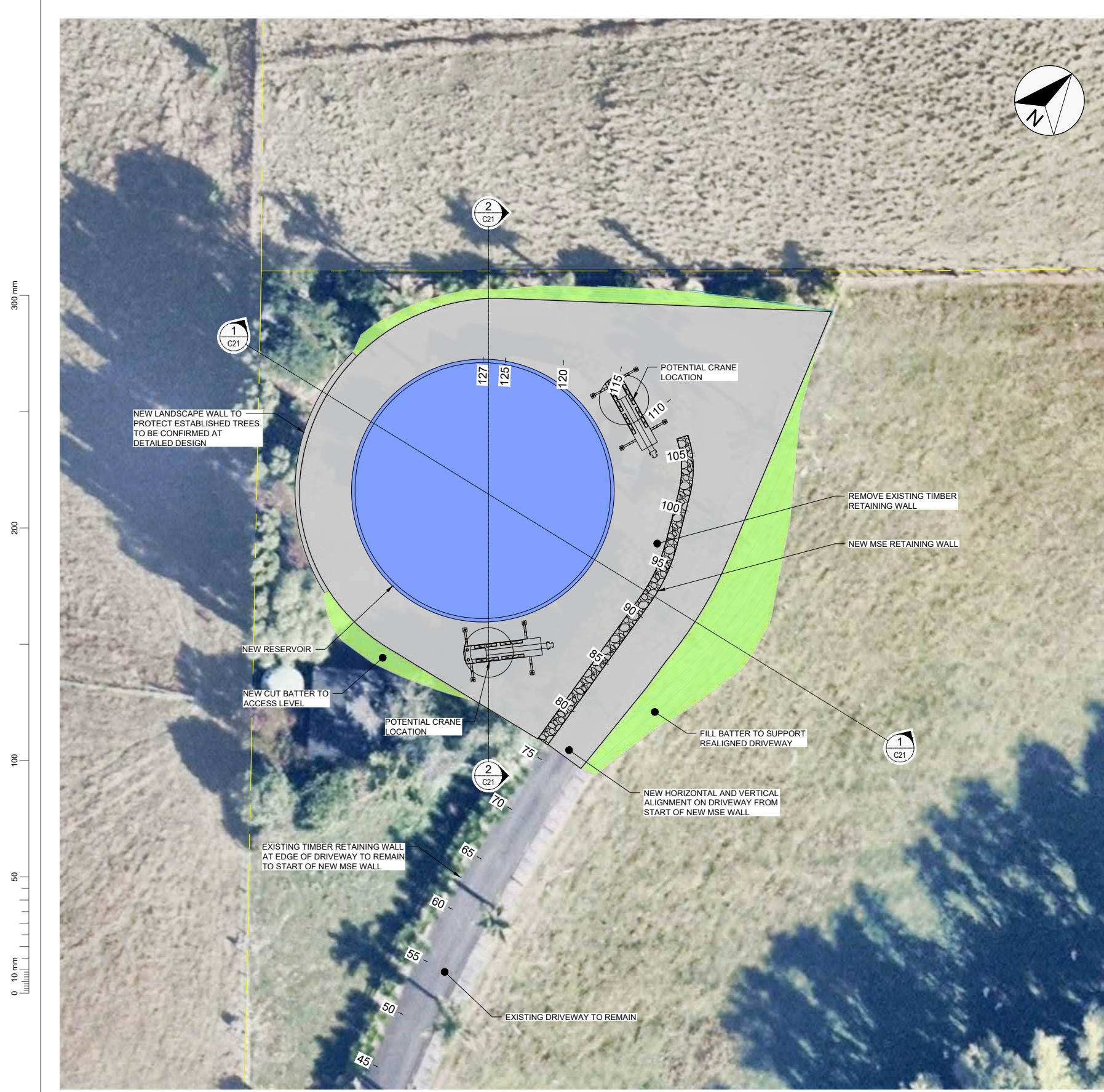




Appendix F

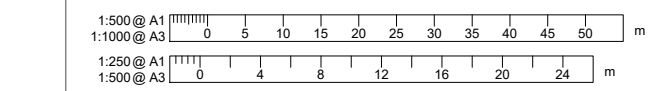
NOR – Richmond South Water Supply Reservoir

Plans



GENERAL ARRANGEMENT

SCALE: 1:250(A1) 1:500(A3)



SITE LAYOUT

SCALE: 1:500(A1) 1:1000(A3)

NOTES

- EXISTING GROUND LEVELS ARE LIDAR OBTAINED LINZ DATA SERVICE.
- AERIAL IMAGERY FLOWN JANUARY 2024, OBTAINED FROM NEARMAP.
- ALL INFORMATION CONTAINED ON THIS SET OF DRAWINGS IS PRELIMINARY. EXACT LAYOUT AND EARTHWORKS SHALL BE REFINED DURING DETAILED DESIGN.
- THIS DRAWING SET SHALL BE USED AS INDICATIVE ONLY.

LEGEND

- NEW HARD SURFACING (ASPHALT OR CONCRETE)
- NEW MSE RETAINING WALL (< 2.5m)
- NEW LANDSCAPE WALL (< 1.0m)
- NEW CUT OR FILL SLOPE
- NEW RESERVOIR
- PROPERTY BOUNDARIES

REVISION	AMENDMENT	APPROVED	DATE
A	PRELIMINARY DESIGN	D.R.	2020-09-01
B	REVISED EARTHWORKS	D.R.	2021-09-10
C	ISSUED FOR CONTRACTOR REVIEW	D.R.	2021-09-17
D	ISSUED FOR CLIENT REVIEW	D.R.	2021-10-29
E	ISSUED FOR CONSENT	D.R.	2023-02-16
F	ISSUED FOR CONSENT	P.B.	2024-05-17



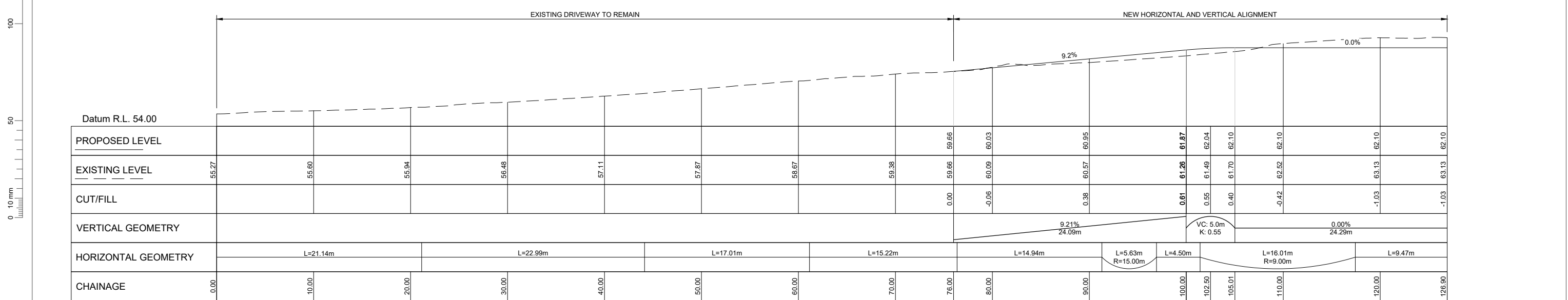
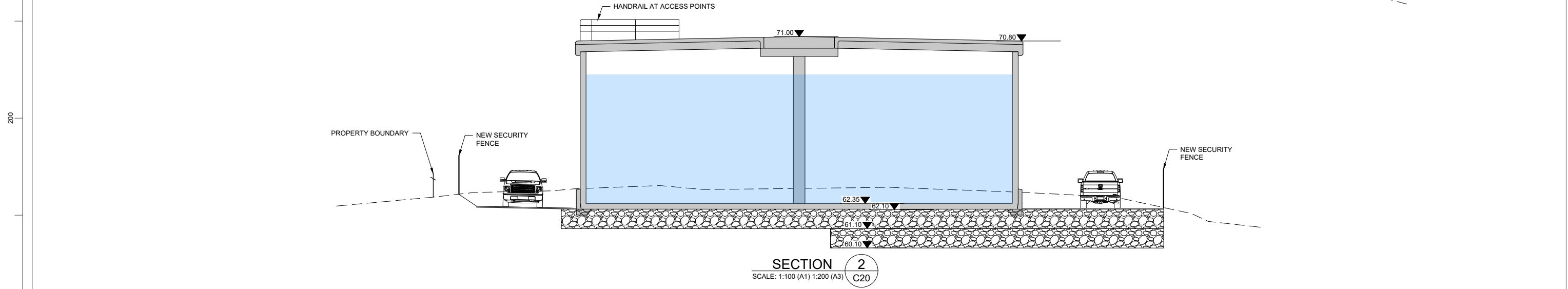
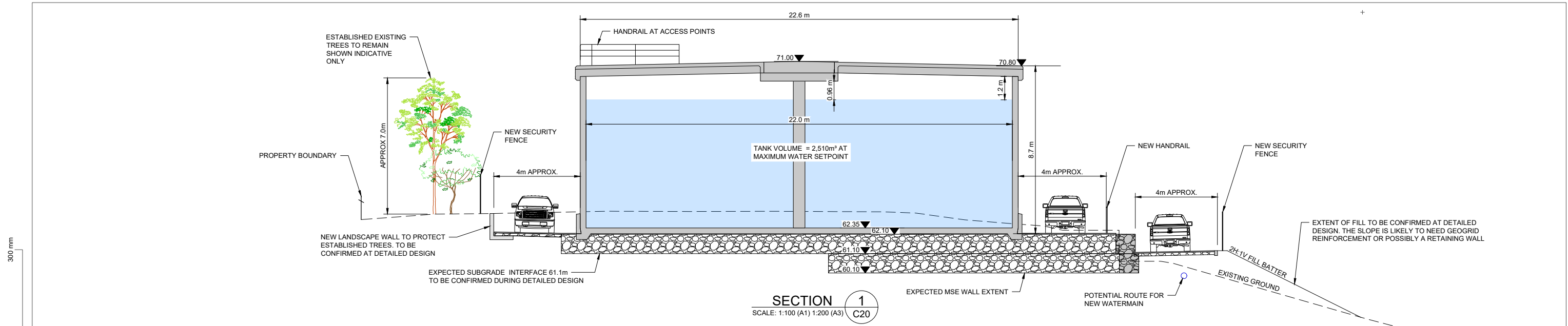
wsp
 Nelson Office
 +64 3 548 1099
 Private Bag 36
 Nelson 7042
 New Zealand

ENVIRONMENTAL

SCALES	DESIGNED	APPROVED	ORIGINAL SIZE
1:250 (A1) 1:500 (A3)	J. COOPER	P. BURNS	A1
	J. COOPER	P. BURNS	
	D. RODD	

FOR CONSENT

PROJECT		SHEET NO.	REVISION
TASMAN DISTRICT COUNCIL RICHMOND SOUTH RESERVOIR		C20	F
TITLE			
PLAN			
WSP PROJECT NO. (SUB-PROJECT)			
5-G3445.59			



DRIVEWAY LONGITUDINAL SECTION

SCALE: H:1:200(A1) 1:400(A3)
V:1:200(A1) 1:400(A3)

1:100 @ A1
1:200 @ A3
1:200 @ A1
1:400 @ A3

REVISION	AMENDMENT	APPROVED	DATE
A	PRELIMINARY DESIGN	D.R.	2020-09-01
B	REVISED EARTHWORKS	D.R.	2021-09-10
C	ISSUED FOR CONTRACTOR REVIEW	D.R.	2021-09-17
D	ISSUED FOR CLIENT REVIEW	D.R.	2021-10-29
E	ISSUED FOR CONSENT	D.R.	2023-02-16
F	ISSUED FOR CONSENT	P.B.	2024-05-17



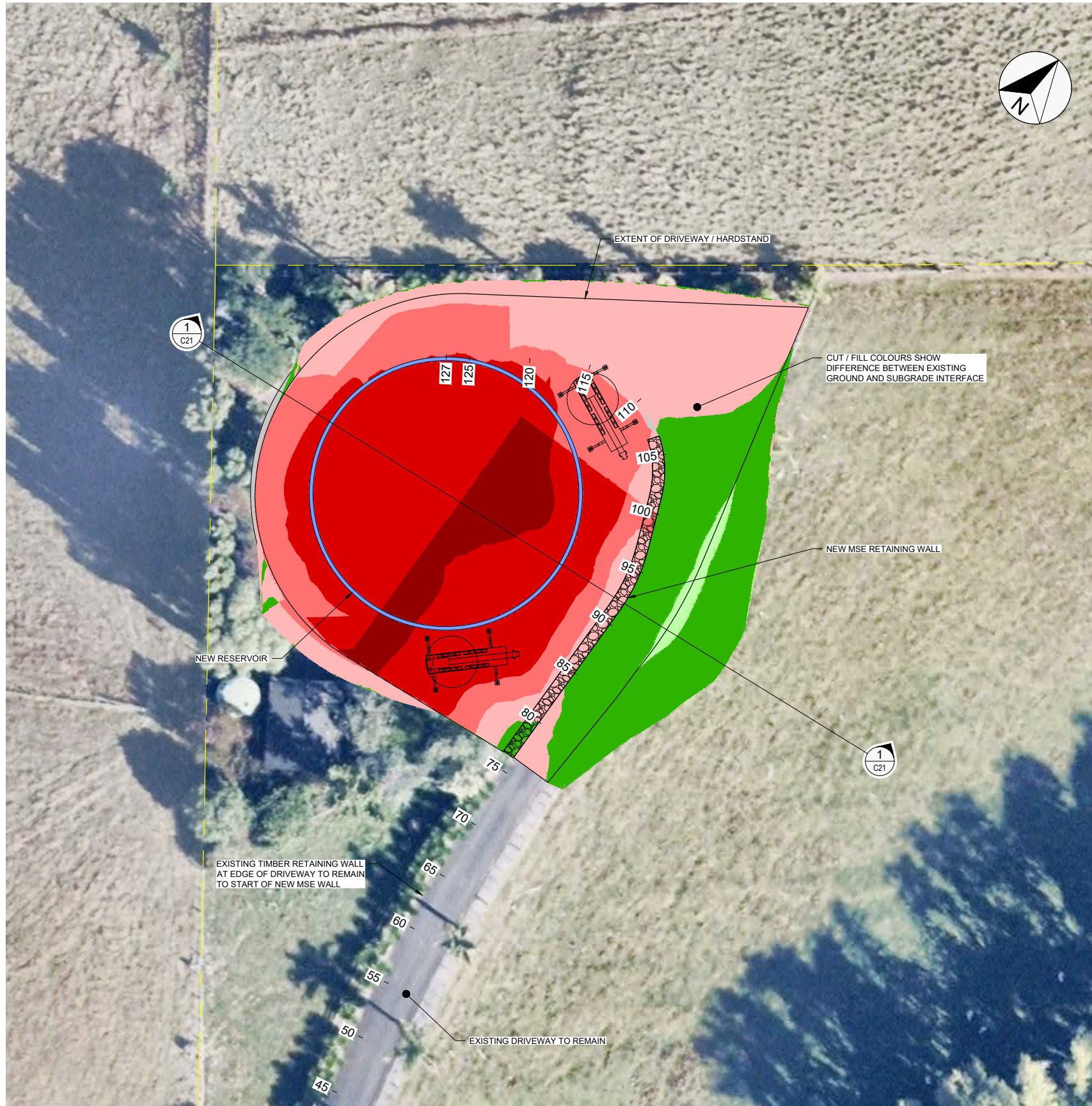
ENGINEERING MANAGER DATE

ENVIRONMENTAL

SCALES	DESIGNED	APPROVED
1:250 (A1) 1:500 (A3)	J. COOPER	P. BURNS
ORIGINAL SIZE A1	J. COOPER	P. BURNS
DRAWN	J. COOPER	P. BURNS
DRAWING VERIFIED	D. RODD	APPROVED DATE
S. FORBES	D. RODD

FOR CONSENT

PROJECT	TITLE	WSP PROJECT NO. (SUB-PROJECT)	SHEET NO.	REVISION
TASMAN DISTRICT COUNCIL RICHMOND SOUTH RESERVOIR	SECTIONS	5-G3445.59	C21	F



NOTES

- EXISTING GROUND LEVELS ARE LIDAR OBTAINED LINZ DATA SERVICE.
- AERIAL IMAGERY FLOWN JANUARY 2024, OBTAINED FROM NEARMAP.
- ALL INFORMATION CONTAINED ON THIS SET OF DRAWINGS IS PRELIMINARY. EXACT LAYOUT AND EARTHWORKS SHALL BE REFINED DURING DETAILED DESIGN.
- THIS DRAWING SET SHALL BE USED AS INDICATIVE ONLY.

LEGEND

- *INDICATIVE
- CUT 3.0m - 3.5m*
 - CUT 2.0m - 3.0m*
 - CUT 1.0m - 2.0m*
 - CUT 0.0m - 1.0m*

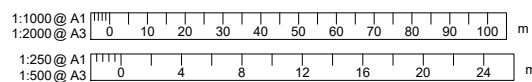
- FILL 0.0m - 1.0m*
- FILL 1.0m - 2.5m*

INDICATIVE BULK EARTHWORKS:
2000m3 CUT
200m3 FILL

IMPORTED FILL FOR SUBGRADE IMPROVEMENTS AND PAVEMENT: 1200m3

GENERAL ARRANGEMENT

SCALE: 1:250(A1) 1:500(A3)



REVISION	AMENDMENT	APPROVED	DATE
A	PRELIMINARY DESIGN	D.R.	2020-09-01
B	REVISED EARTHWORKS	D.R.	2021-09-10
C	ISSUED FOR CONTRACTOR REVIEW	D.R.	2021-09-17
D	ISSUED FOR CLIENT REVIEW	D.R.	2021-10-29
E	ISSUED FOR CONSENT	D.R.	2023-02-16
F	ISSUED FOR CONSENT	P.B.	2024-05-17



Nelson Office
+64 3 548 1099
Private Bag 36
Nelson 7042
New Zealand

ENGINEERING MANAGER _____ DATE _____

ENVIRONMENTAL

SCALES	DESIGNED	APPROVED	ORIGINAL SIZE
1:250 (A1) 1:500 (A3)	J. COOPER	P. BURNS	A1
	J. COOPER	P. BURNS	
	J. COOPER	P. BURNS	
	J. COOPER	P. BURNS	

FOR CONSENT

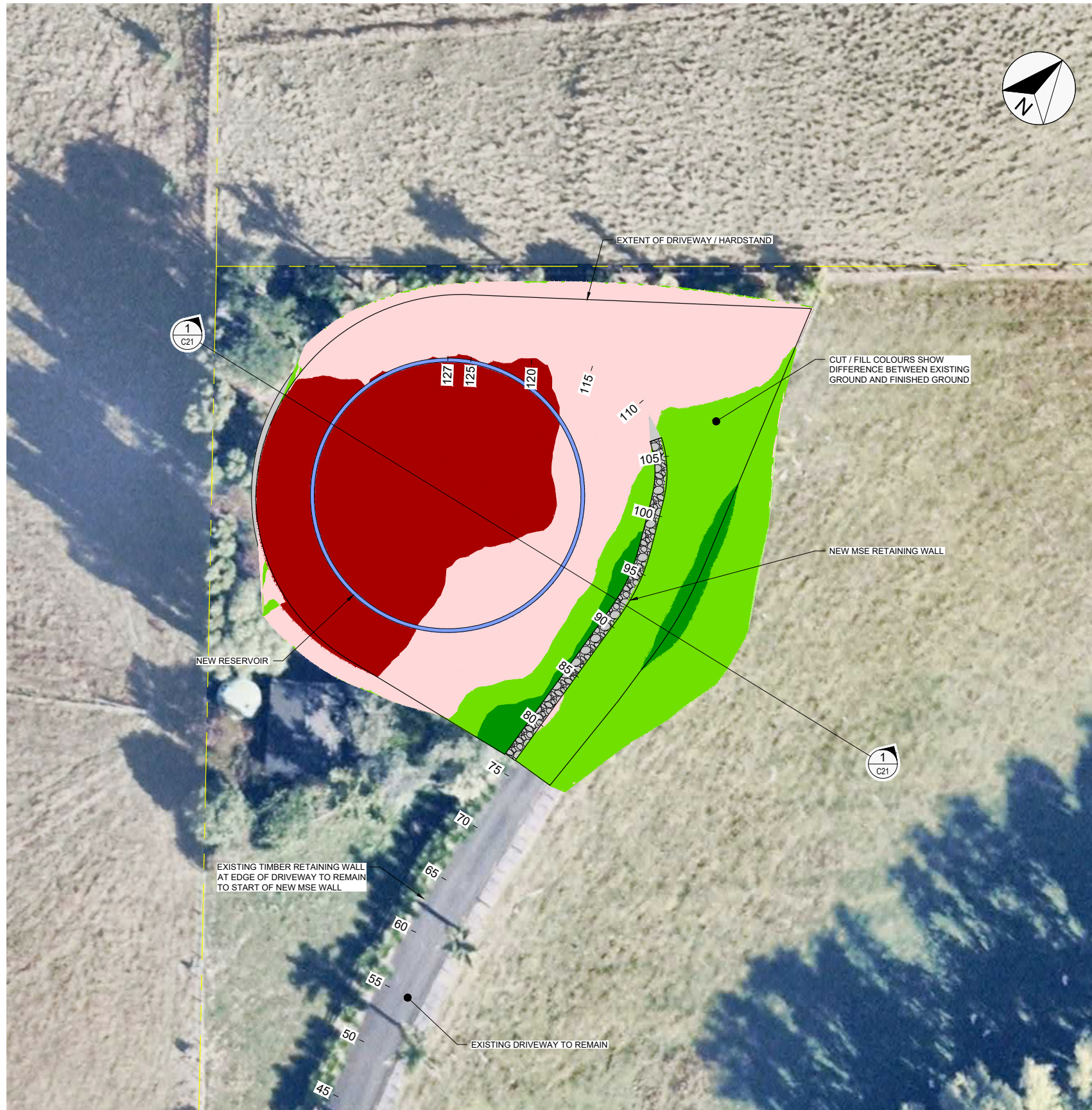
PROJECT
**TASMAN DISTRICT COUNCIL
RICHMOND SOUTH
RESERVOIR**

TITLE
BULK EARTHWORKS PLAN

WSP PROJECT NO. (SUB-PROJECT) 5-G3445.59

SHEET NO. C22

REVISION F



NOTES

1. EXISTING GROUND LEVELS ARE LIDAR OBTAINED LINZ DATA SERVICE.
2. AERIAL IMAGERY FLOWN JANUARY 2024, OBTAINED FROM NEARMAP.
3. ALL INFORMATION CONTAINED ON THIS SET OF DRAWINGS IS PRELIMINARY. EXACT LAYOUT AND EARTHWORKS SHALL BE REFINED DURING DETAILED DESIGN.
4. THIS DRAWING SET SHALL BE USED AS INDICATIVE ONLY.

LEGEND

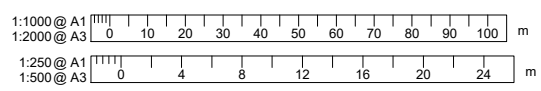
*INDICATIVE

	CUT 1.0m - 1.6m*
	CUT 0.0m - 1.0m*
	FILL 0.0m - 1.0m*
	FILL 1.0m - 2.5m*

300 mm
200
100
50
0 10 mm

GENERAL ARRANGEMENT

SCALE: 1:250(A1) 1:500(A3)



REVISION	AMENDMENT	APPROVED	DATE
A	PRELIMINARY DESIGN	D.R.	2020-09-01
B	REVISED EARTHWORKS	D.R.	2021-09-10
C	ISSUED FOR CONTRACTOR REVIEW	D.R.	2021-09-17
D	ISSUED FOR CLIENT REVIEW	D.R.	2021-10-29
E	ISSUED FOR CONSENT	D.R.	2023-02-16
F	ISSUED FOR CONSENT	P.B.	2024-05-17



wsp
Nelson Office
+64 3 548 1099
Private Bag 36
Nelson 7042
New Zealand

ENGINEERING MANAGER _____ DATE _____

ENVIRONMENTAL

SCALES	ORIGINAL SIZE	
1:250 (A1) 1:500 (A3)	A1	
DRAWN	DESIGNED	APPROVED
J. COOPER	J. COOPER	P. BURNS
DRAWING VERIFIED	DESIGN VERIFIED	APPROVED DATE
S. FORBES	D. RODD

FOR CONSENT

PROJECT
TASMAN DISTRICT COUNCIL RICHMOND SOUTH RESERVOIR
TITLE
EXISTING GROUND TO FINISHED GROUND
WSP PROJECT NO. (SUB-PROJECT) 5-G3445.59
SHEET NO. C23
REVISION F