

Risk Based Flight Restriction Zones for Remote Piloted Aircraft Systems (RPAS) and Unmanned Aerial Vehicle (UAV) Flights within a 4km radius of Motueka Aerodrome:

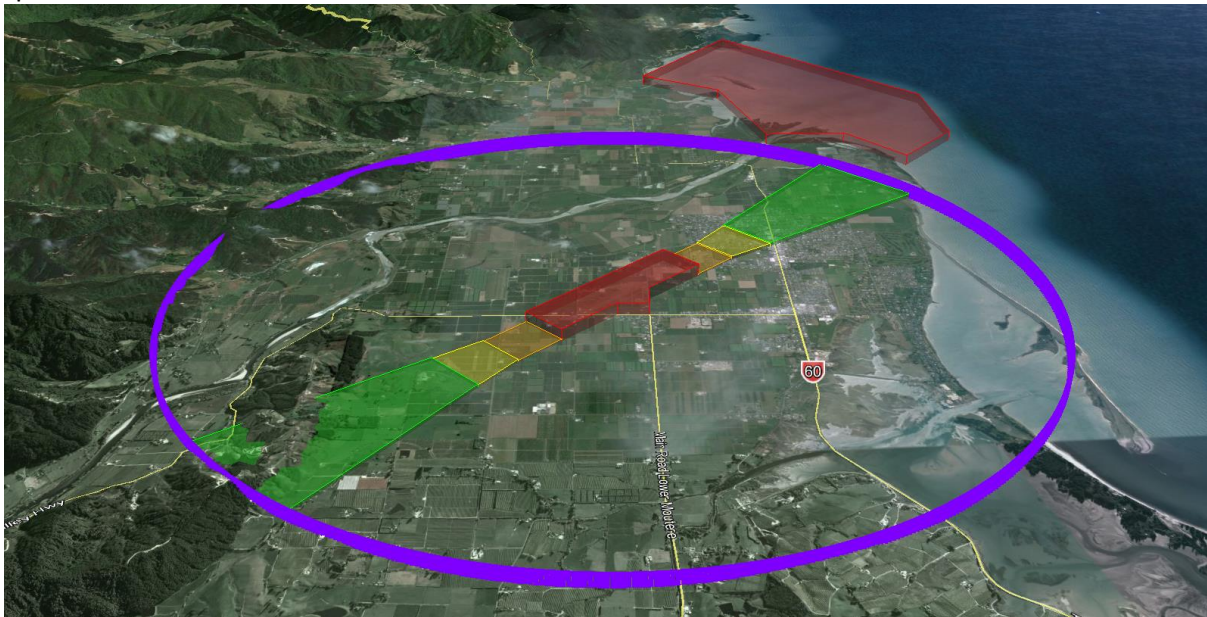
The risk based flight restriction zones in this document were developed and submitted by Tony Nikkel of Nikkel Surveying Ltd for approval to operate as a RPAS/UAV operator within 4km of the Motueka Aerodrome. Nikkel Surveying Ltd is a CAA approved Part 102 RPAS operator.

These restrictions were recommended for approval by the Motueka Aerodrome Advisory Group on 26 August 2015 and have been approved by the Motueka Aerodrome Operator.

The Tasman District Council and Motueka Aerodrome Advisory Group gratefully acknowledge the efforts of Tony Nikkel as the source of this document. All images and wording in this document are subject to copyright: © 2015 Anthony Paul Nikkel.

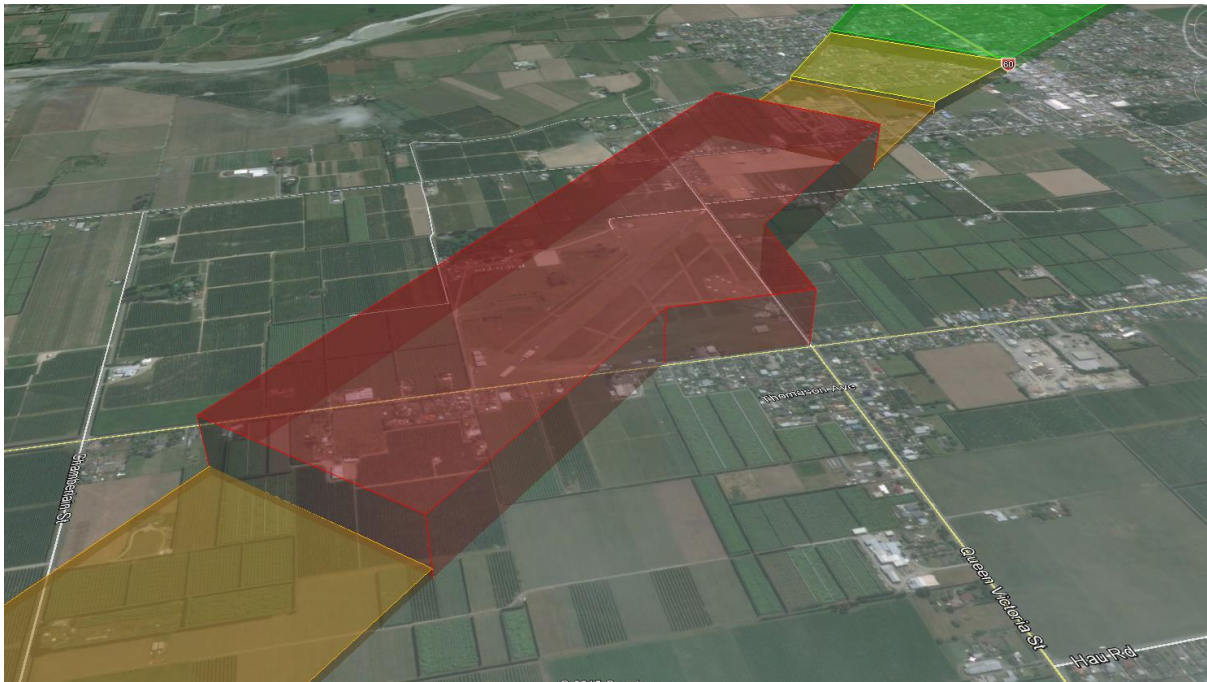
4KM Purple Zone

Maximum Flight Altitude 300 feet (90 metres) amsl (above mean sea level). See attachment for specific restrictions



Red Airport Zone

No Fly Zone. See attachment for specific restrictions



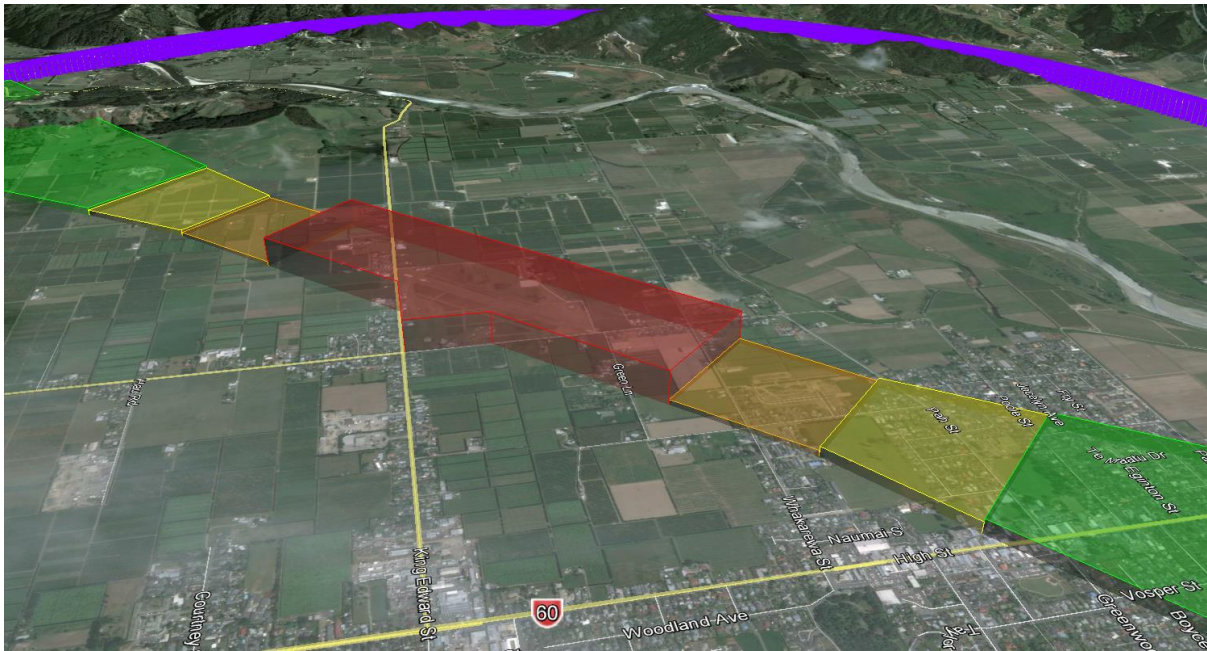
Orange Zones - North and South

Maximum Flight Altitude 50 feet (15 metres) amsl See attachment for specific restrictions



Yellow Zones - North and South

Maximum Flight Altitude 80 feet (25 metres) amsl See attachment for specific restrictions



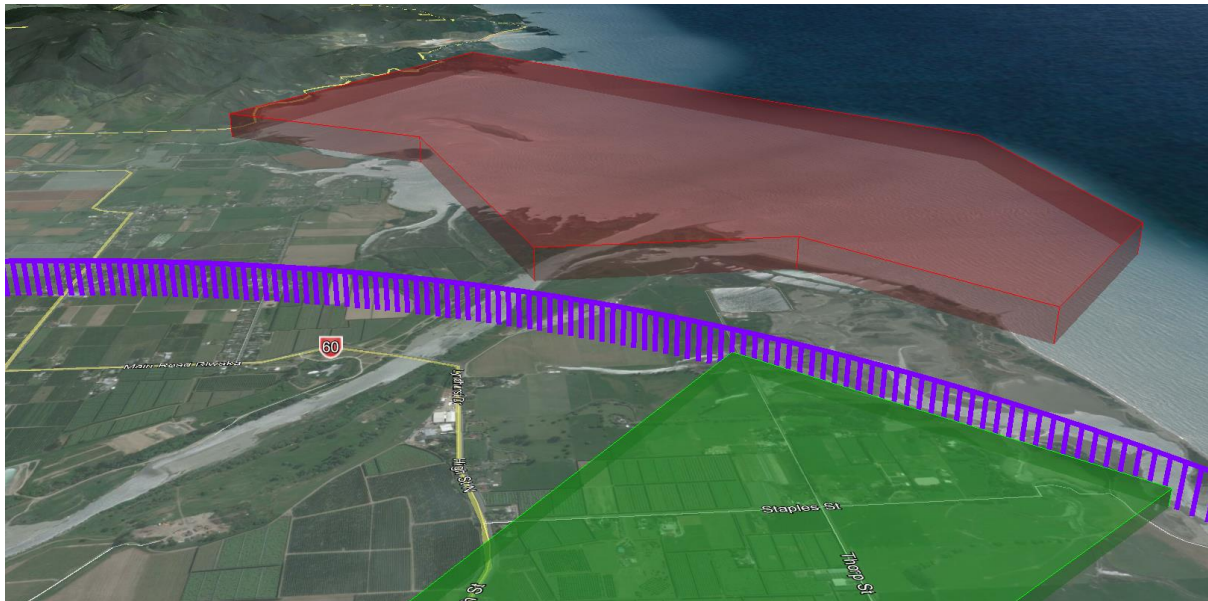
Green Zones - North and South

Maximum Flight Altitude 150 feet (45 metres) amsl (Mytton Heights 300 ft (90 metres) amsl). See attachment for specific restrictions



Tapu Bay Low Flying Area

No Fly Zone. See attachment for specific restrictions



Summary Table of Motueka Aerodrome - Risk Based UAV Restriction Zones

Zone	Risk Description	Restriction (Note all other Part 101 and 102 CAA requirements are to be met)	Specific Approval Required
Red Zone	<ul style="list-style-type: none"> Active Runways Minimum Safe Glide Path to 10m level as per TRMP Airfield boundary extents including the parachute operations area, Aviation College and all aircraft manoeuvring areas 	<ul style="list-style-type: none"> No Fly Zone unless specific CAA and Aerodrome Operator approval is granted and a NOTAM is lodged. Operators must obtain discretionary approval to operate in Motueka Aerodrome airspace. 	Yes Civil Aviation Authority (CAA) Aerodrome Operator (AO) Motueka Aerodrome Advisory Group (MAAG)
Zone	Risk Description	Restriction (Note all other Part 101 and 102 CAA requirements are to be met)	Specific Approval Required
Orange Zones	<ul style="list-style-type: none"> Minimum Safe Glide Path from 10m to 20m level as per TRMP 	<ul style="list-style-type: none"> Maximum Permitted altitude is 15m (50ft) amsl No flying in this zone when aircraft are joining overhead, in the circuit, approaching to land or taking off. RPAS to have G2A Comms Operators must obtain discretionary approval to operate in Motueka Aerodrome airspace. 	No Provided RPAS has discretionary approval to operate in Motueka Aerodrome airspace, Comms & gives position reports
Yellow Zones	<ul style="list-style-type: none"> Minimum safe Glide Path from 20m to 30m level as per TRMP 	<ul style="list-style-type: none"> Maximum Permitted altitude is 25m (80ft) amsl No flying in this zone when aircraft are joining overhead, in the circuit, approaching to land or taking off. RPAS to have G2A Comms Operators must obtain discretionary approval to operate in Motueka Aerodrome airspace. 	No Provided RPAS has discretionary approval to operate in Motueka Aerodrome airspace, Comms & gives position reports
Green Zone	<ul style="list-style-type: none"> Extension of Runway 02/20 Glide Path corridor from 30m level as per TRMP out to 4km 	<ul style="list-style-type: none"> Maximum Permitted altitude is 45m (150ft) amsl With the exception that UAV flights over Mytton 	No Provided RPAS has discretionary

	Aerodrome limit.	<p>Heights are permitted to a Maximum altitude of 90m (300 ft) amsl</p> <ul style="list-style-type: none"> • No flying in this zone when aircraft are joining overhead, in the circuit, approaching to land or taking off. • RPAS to have G2A Comms • Operators must obtain discretionary approval to operate in Motueka Aerodrome airspace. 	approval to operate in Motueka Aerodrome airspace, Comms & gives position reports
Purple Zone	Within 4km of Motueka Aerodrome	<ul style="list-style-type: none"> • Maximum permitted altitude is 90 metres (300 feet) amsl. • Operator is not to place the aerodrome or any of the other restriction zones between the UAV and themselves. 	<p>No, provided RPAS has discretionary approval to operate in Motueka Aerodrome airspace, Comms and gives regular position reports.</p> <p>RPAS may Operate below 20 metres without Aerodrome Operator approval.</p>