



A vibrant place,

Richly appreciated by the community for its open space, natural and ecological values;

Happily remembered by generations for their activities, adventures and discoveries;

A place where tangata whenua hold mana as kaitiaki of taonga; and

A place to be shared with increasing respect



The monitoring and assessment programme has built up a good picture of the Inlet's health and of the on-going issues

Waimea Inlet Action Plan 2018 to 2021



Figure 1: Photograph by Duncan Cunningham
Updated August 2019

Contents

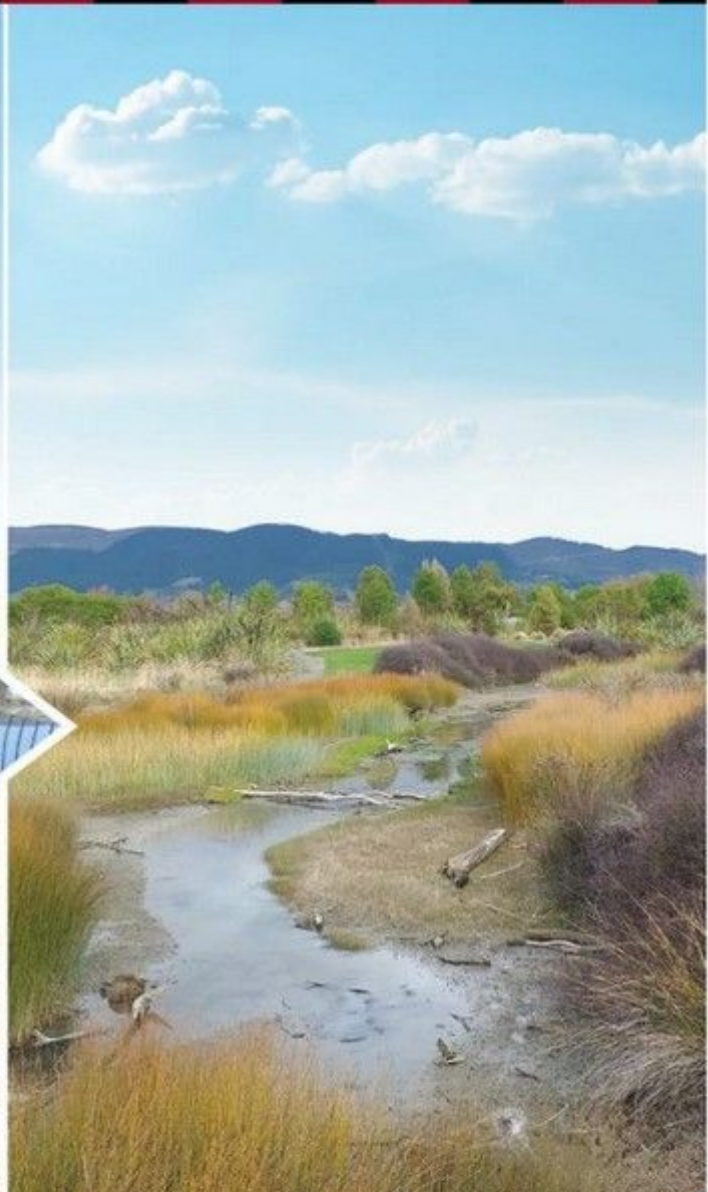
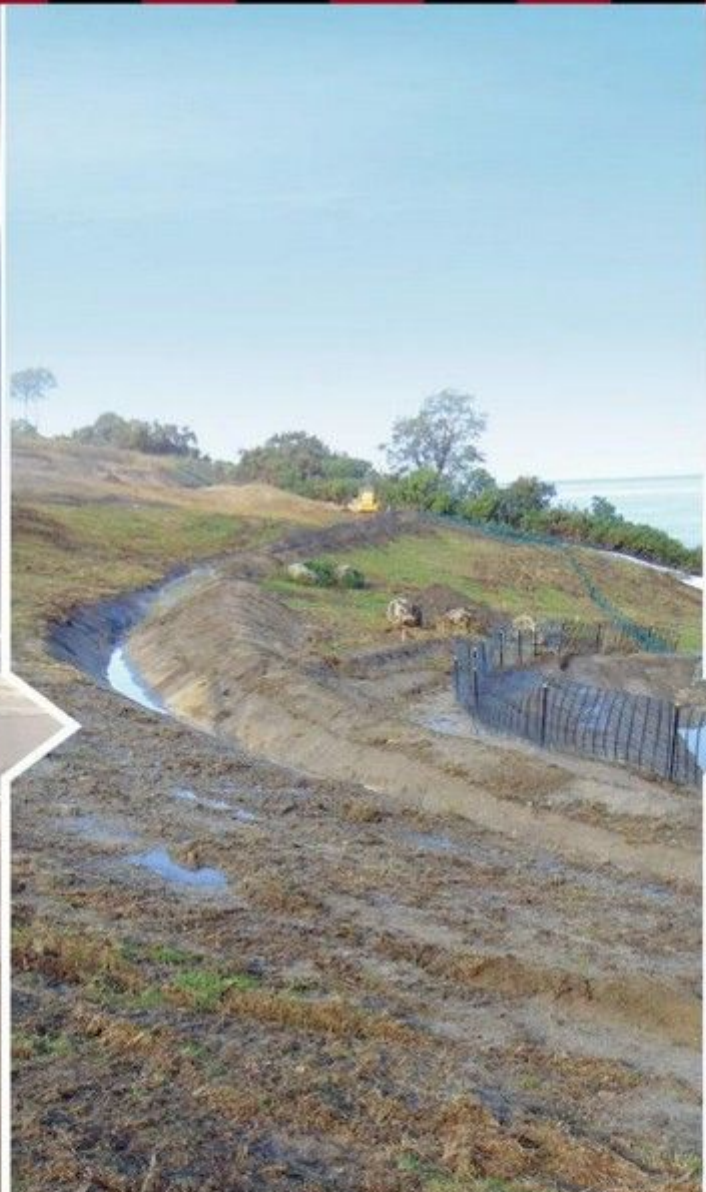
Preface.....	2
Introduction.....	6
Considerations for identifying priorities	6
Objectives, outcomes, actions and targets	8
Review	13
Glossary.....	16
Terms of Reference: Coordination Group for Waimea Inlet.....	19

In May 2019 the Council adopted the Waimea Inlet Action Plan

Aim: to implement the
Waimea Inlet Strategy

Working together:

Tasman District Council
Nelson City Council
Department of Conservation
Waimea Inlet Forum
Fish and Game
Ngāti Tama, Ngāti Rārua and
Te Ātiawa
Tasman Environmental Trust



**The Land Development Manual and the
Erosion and Sediment Guidelines are now operative**



Nau Mai Haere Mai

Catchment Overview

Stream Health & Aquatic Habitat

Contamination Risks



Aspirations

Key Issues

Improvement Actions



Aspiration 2:

Stormwater discharges do not degrade the water quality and ecosystem health of our streams and estuaries



And the new Urban Stormwater Strategy and the Richmond Catchment Management Plan are also operative



We all hope there will be more progress on forest logging



Cyclone Fehi gave us a foretaste of sea level rise



Living shorelines are more resilient, natural and attractive



Keep Richmond Beautiful is one of many planting groups



**We're on the way, but there's still more to do
The complete Action Plan is on the Council's website**