



TASMAN

ISSUE 240 26 NOVEMBER 2010

newsLine THE MAG



E DAY REAPS RECORD HAUL

Tasman and Nelson residents cleared their homes of 70 tonnes of old computer equipment in the fourth eDay. Nationwide, the collection reaped 900 tonnes for recycling.

Locally, the Lower Moutere collection point recorded 11.04 tonnes from 172 cars, and at the Enza site in Stoke, 937 cars dropped off 59.41 tonnes of monitors, printers, scanners etc.

The free drive-through event was held in 53 locations across the country on Saturday 6 November 2010 – up from 38 locations last year.

National organiser Laurence Zwimpfer, of the eDay New Zealand Trust, says the response was phenomenal, with the old computers filling 110 shipping containers.

The Government estimates that 80,000 tonnes of electronic waste goes into landfills every year.

The eDay waste is stripped and any useful part or materials – including gold – are salvaged. Collectible computers are auctioned on Trade Me.

Mr Zwimpfer says electronic waste contains materials such as lead

and mercury, a potential toxic hazard to the environment. Since eDay's inception in 2007, an estimated 3,200 tonnes of waste has been diverted from landfills.



The collection was primarily funded through the Ministry for the Environment's Waste Minimisation Fund, with support locally from Tasman District Council, Nelson City Council and businesses.

National sponsors were the 2020 Communications Trust, KiwiRail, MORE FM, the Blue Star Group, Trade Me and industry partners The Laptop Company and Invo.

Tasman District Council thanks the volunteers who helped make the day such a success.

THIS WEEK:
04. Ants campaign

02. Motueka Recreation Centre
06. Richmond Water Works

03. Illegal dumping
07. Motorbikes and Scooters

MAYOR'S COMMENT

This week has shown the importance of primary industry to our local economy.

On one hand we had the Minister of Aquaculture and the Prime Minister reaffirm their support for industry to resolve the current issues to enable the development of aquaculture in Tasman, and then we hear of the incidence of PSA in local Kiwifruit orchards.

The national aquaculture conference held last week firmly identified the District has one of the areas the Government sees great promise in with the release of the latest Aquaculture legislative amendments. As an example of sustainable industry aquaculture has few peers and the District is lucky enough to have the perfect natural environment for its development. It is an industry I will certainly continue to support for its

ability to attract investment, talent and secondary industries with little impact on the environment.

While celebrating that news, however, we heard that the disease PSA had been found in Kiwifruit orchards in Riwaka and Golden Bay. I appreciate the resilience we have amongst our local Kiwifruit growers, who I know will be actively implementing an agreed response to this significant challenge. We will be working with MAF Biosecurity and the industry to identify any support we can provide to this important part of the Tasman economy.

– Mayor Richard Kempthorne



MOTUEKA RECREATION CENTRE FIT FOR THE FUTURE

The \$2.1 million refurbishment of the Motueka Recreation Centre was officially opened on 5 November 2010, with Tasman Mayor Richard Kempthorne, Minister of Internal Affairs Nathan Guy and West Coast-Tasman MP Chris Auchinvole snipping the ribbon.

The two-year project has created an international-standard roller hockey court, a bigger gym – with \$40,000 worth of new equipment – changing facilities and administration space. The Canterbury Community Trust contributed \$100,000, the Lion Foundation contributed \$50,000 and the Lotteries Grants Board \$750,000 towards the renovation, with the balance coming from the Tasman District Council, which owns the centre.

The "Rec" is already home to netball, basketball, volleyball, badminton, table tennis, indoor cricket, gymnastics, a climbing wall, weight training, aerobics classes and two martial arts dojos, plus a café and adjoining cinema.

The well-used centre in Old Wharf Road, managed by Sport Tasman, opened in 1987 – transformed from its previous life as an apple packhouse.



Mayor Richard Kempthorne, Minister of Internal Affairs Nathan Guy and West Coast-Tasman MP Chris Auchinvole.

HOME BUILDER OF THE YEAR. AGAIN.



Why more New Zealanders trust G.J. Gardner Homes to build their homes... year after year.

G.J. Gardner Homes is a network of individual owner-operated businesses, so you get all the advantages of dealing with local people in your community, backed by the resources, buying power and security of a large, national group.

As our customers have discovered, it's a combination that provides the best of both worlds: excellent value as well as genuine commitment and service.

It's just one of the reasons why more people have built with us over the last five years than any other builder.

NELSON

195 Queen Street, Richmond
Phone: (03) 543 9502
OPEN Mon to Fri 9am-5pm

SHOWHOMES

55 Champion Road
Phone: (03) 544 2795
4 Daelyn Road
Phone (03) 544 0010
OPEN Mon to Fri 11am-4pm
Sat & Sun 1pm-4pm

GJ-HB-657-NL070A

0800 42 45 46
www.gjgardner.co.nz

G.J. Gardner. HOMES





ILLEGAL DUMPING ALONG OUR RIVERS

Rubbish dumpers along Tasman riverbanks are costing ratepayers \$50,000 a year.

"It's enough to make you cry some days," says Philip Drummond, Rivers Asset Engineer with the Tasman District Council.

Offenders can be traced in many cases, he adds, and a Council compliance officer will be knocking on the door.

Offal is a common find – sheep or pigs. Dogs are taken to the river and shot, with the carcasses left in the gravel for recreational walkers to find.

Philip says household refuse and whiteware are routinely thrown-out. Council contractors have to clean it all up.

The rubbish is not only unsightly, but can be a pollution risk and hazardous to human health. A few years ago, for instance, a trailer load of dog excrement from kennels was offloaded at the lower end of the Moutere Stream – upriver from whitebaiters in the middle of the season.

"You have all kinds of stuff dumped in the Lower Motueka," says Philip, but riverbanks and beds throughout the District are potential tips for people seeking to avoid transfer station fees.

Building materials, including sharp offcuts of roofing iron, were found one day. A trailer load of old bike parts contained docketts from a shop. The owner denied all knowledge, but to his credit, fronted up

a few days later to say he had discovered that a junior staff-member cleaning out the store-room had thought to save a few dollars.

That thinking frustrates and confounds Philip, who says the fuel cost to these remote areas is often more than the transfer station fee.

Sometimes bagging the offenders is no great test of detective skills. Four vehicles discarded in one instance still bore their stockcar racing numbers. A phone call to the association identified the fly-tippers.

In another case an old Land Rover was dumped and set alight. It failed to burn completely and in the passenger seat pocket Council staff found the driver's licence – and probation papers – of the offender.

A transfer station is never far away. Council has five: Richmond, Motueka, Murchison, Takaka and Collingwood, and there is **no charge** for scrap metals, recyclable materials or car bodies. Please use the transfer stations for the purpose they were created, to help protect the environment and public health.

Anyone seeing dumping of rubbish in Tasman District should immediately call Council (24 hours a day, 7 days a week) and report the incident, with vehicle registration and a description of the offender.

'The gradual loss of your ability to focus on near objects is one of nature's not-so-subtle reminders that you're over 40-something!'

We know not everyone feels comfortable wearing spectacles.

Innovative fitting procedures and technical developments in contact lens design can change the way you see the world, especially up close! Our optometrists are experienced in advanced contact lens fitting and can give you back comfortable and convenient vision without glasses.

(MATTHEWS)
Eyewear. Eyecare.

www.matthews.co.nz



Phil Matthews
Optometrist & Managing Director

Blenheim
82 Market Street
03 578 5880

Motueka
217 High Street
03 528 8724

Nelson
1 Buxton Square
03 548 3249

Richmond
211 Queen Street
03 544 4319

A Summer that's Hummin'

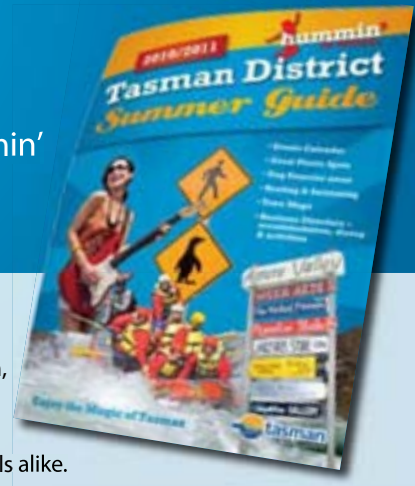
Sometimes a stranger can see your own backyard better than you do. Hummin' in Tasman, the summer guide to activities in the District, is apt to surprise locals with the feast of natural attractions and fun activities on offer.

Cardboard boat flotillas, motorbike racing at the beach, willow basket weaving, movies under the stars – whatever spins your wheels is on the menu. Hummin' can tell you where to catch a Christmas parade, kick back to music on a vineyard lawn, or tremble to the thunder of drag racing.

In addition to the events guide, Hummin' catalogues the attractions we should never take for granted: our national parks, the best swimming (beach and river), picnic spots, boat launching ramps and ski lanes – even where to exercise the dog.

Camping spots, motorhome dumpsites, libraries, museums, recycling centres, accommodation, arts and crafts, churches – the guide canvasses the need-to-know facilities for visitors and locals alike.

Hummin' in Tasman is available at Tasman District Council offices, libraries, i-SITES and other outlets. Pick up a copy to have ready when visitors arrive – and take a fresh look at Tasman District through their eyes.



BAIT CAMPAIGNS TARGET INVADERS

Argentine and Darwin's ants, which have infested Tasman and Nelson properties for some years now, are about to come under attack again.

The ants can spoil outdoor activities in backyards, and sometimes invade households for food and water. They could also affect orchardists and viticulturists as they cultivate aphids and scale insects for their "honey dew".

Both ant species are similar in appearance (light-brown and small), but Darwin's ants produce a strong smell when squashed.

Argentine and Darwin's ants are included in the Tasman-Nelson Regional Pest Management Strategy. If these ants are present on your property, land occupiers (i.e. those living at this address) are required to buy and apply bait. A coordinated campaign by neighbours works best.

Tasman District and Nelson City Councils are promoting Saturday-Sunday evenings, 11-12 December 2010 (or the first fine evening afterwards), for a neighbourhood campaign against Darwin's ants. A single application of bait, correctly applied, will reduce ant numbers to very low levels and provide effective control for 3-4 years.

Xstinguish bait is available in 325gm cartridges and 100gm tubes. The latter should only be used for very small sections; it is more cost-efficient for neighbours to share a larger cartridge. The bait is slow-acting and the results may not show up for two or three weeks.

Advion Gel and Advion Arenas are baits that have recently become available. Both can be used inside, as well as outside houses. These are best used close to nest sites and ant highways.

New products are being developed and these include sprays and granules that will provide long-term control, but these are not currently available for public use. Fly spray and boiling water are ineffective, doing little harm to the other 99 percent of the ants. They will not kill the pupae and larvae in the nest.

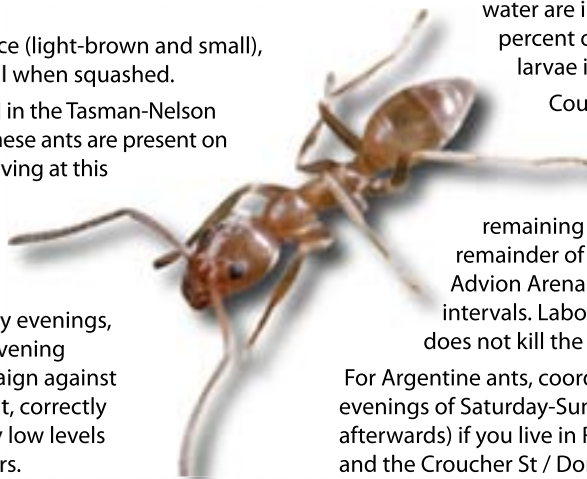
Council contractors will carry out roadside baiting on 11-12 December in areas where Darwin's ants are present.

If you find you still have some nests remaining after six weeks, spot-treat these with the remainder of the Xstinguish or buy a small number of Advion Arenas and move these from nest to nest at weekly intervals. Laboratory results with Advion gel indicate that it does not kill the colonies (ants, pupae and larvae).

For Argentine ants, coordinated baiting will take place on the evenings of Saturday-Sunday 19-20 February (or the first fine evening afterwards) if you live in Richmond (Olympus Way / Chelsea Ave area and the Croucher St / Doran St area).

Xstinguish is locally available from Brent Thomson of FlyBusters/ AntiAnts (0800 837 070), Warwick Ivory of Alpha Environmental, 16 Gladstone Road, Richmond (544 4365) and Stephen Fryer, of Pest Management and Training Services (544 5274 or 027 443 8551). The 325gm cartridges cost \$65 and the 100gm syringe costs \$46.

Advion Gel and Advion Arenas are available from Stephen Fryer and Warwick Ivory. For further information, contact Lindsay Vaughan, Biosecurity Coordinator at the Tasman council, Ph 03 543 8432.



PROFILE: KRISTA HOBBDAY

ROAD SAFETY COORDINATOR



What is your main role?

I organise and promote a range of different road safety projects, events and activities. Currently I am working on motorcycle training and awareness campaigns, speed and stopping distance campaigns outside schools, education around the use of booster seats until children reach 148cm in height, and educating people about the correct

use of other child restraints, plus cycle promotion. I work alongside a range of groups and organisations, for example ACC, Plunket, the New Zealand Transport Agency and the Police.

What are the common challenges you encounter?

With all education and encouragement projects it is important to reach as many people as possible across the district. This can prove to be a challenge, but has become easier as I get to meet more people and make more connections.

Are there any misconceptions getting in the way?

I sometimes get asked about roading or infrastructure issues, which can be tricky to answer. But luckily I work within a great team of engineers who can help answer these queries for me.

What's the most curly question or situation you have encountered recently?

There is always something to learn so there have been some tricky questions about child restraints, especially one I have not seen before. I am currently working with and talking to a lot to motorcyclists and this has been quite an eye-opener in terms of what they see as safety issues on the road, as they are different from issues that car drivers may come across.

What's the most satisfying part of your job?

Meeting lots of different people from all over the district – from children at early learning centres to older drivers on mobility scooters, and everyone in between!

BUSINESSES PRAISED FOR BEING ACCESSIBLE

Two Richmond businesses have earned a pat on the back for being easy to access.

At the August meeting of the Accessibility for All forum, BJ Clark, a Barrier-Free Adviser from CCS Disability Action, briefed the Forum members on a quick check he had done of some of Richmond's businesses. The two businesses he highlighted on this occasion were the National Bank and Taylors We Love Shoes who had entrances wide enough for people with double buggies as well as wheelchairs and mobility scooters.

The doorways were easy to open for those with limited movement in their upper bodies, he said. The layout of the building was also user-friendly.

Mr Clark, who offers advice on how to make buildings and journeys more accessible for all users, said people with disabilities spend money just like anyone else and their needs should be catered for in building designs and plans.

Forum members unanimously agreed to congratulate the two businesses. If you know of any other shops or businesses across the District that you feel are worthy of mentioning for good accessibility, please let us know by emailing sarah.downs@tasman.govt.nz or Ph. 03 543 8542.

Solar Hot Water

Save up to 75% on hot water bills in Winter and up to 98% in Summer!

High efficiency Evacuated Tube Systems

Government Subsidies Available

Ideal for new & existing homes

Sold in over 30 countries

10 & 15 year warranties

Approved Apricus Installer

Cottage Plumbing and Solar - Graham Dyce
 Mob: 021 294 0202, Ph/AH: 03 541 8760
 E: cottage@solarplumber.co.nz
 W: www.solarplumber.co.nz

Resource Consents
 Resource Management Consultants and surveyors

Also in Mapua

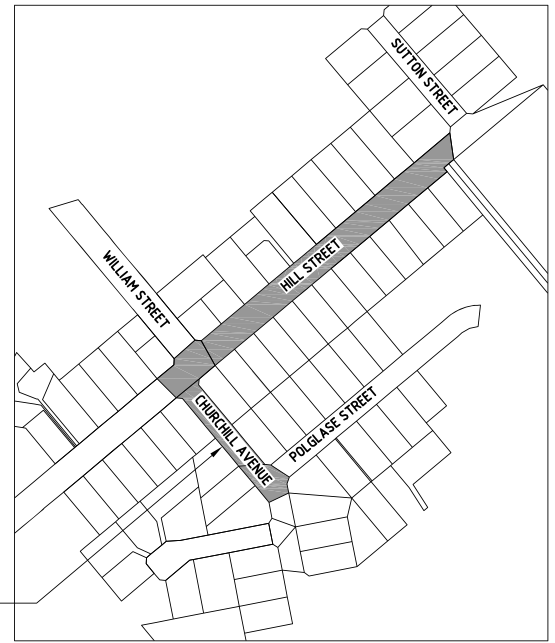
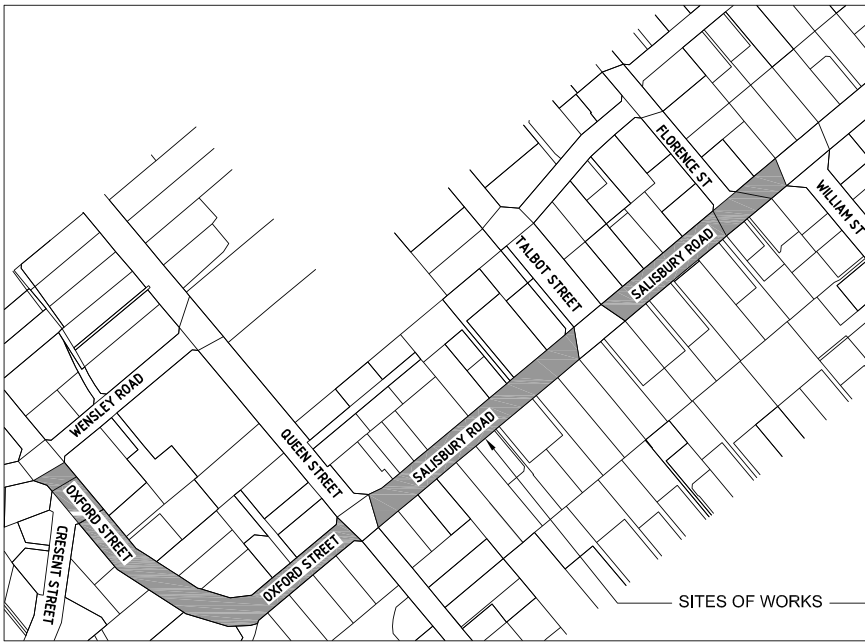
Building related RC consents
 Subdivision consents
 Discharge consents
 Boundary Adjustment
 Land Survey -GPS
 Power Easements
 Boundary Marking
 Site Plans- Contours

Simon Jones
simon@jals.co.nz

Andrew Stanger
andrew@jals.co.nz

03 548 2833

Jones & Associates Ltd
 Registered Professional Surveyors
www.jals.co.nz



WATER MAIN REPLACEMENT WORKS IN RICHMOND

From 22 November 2010 to mid-January 2011, Council will be replacing ageing water mains (originally installed in 1947), service connections and water meters in parts of Richmond. The streets affected and the timing of the works are:

- Oxford Street – (from Crescent Street to the Queen Street roundabout) – From 22 November 2010
- Salisbury Road – both sides of the road (from Queen Street to William Street) – From 22 November 2010
- Hill Street – (from Sutton Street to Churchill Avenue) – From 10 January 2011
- All of Churchill Avenue – From 10 January 2011

Work will cease during the Christmas-New Year period (17 December 2010 to 5 January 2011) and the sites will be left in a tidy condition.

There may be some minor disruption to water supplies and Council's contractor will notify residents by hand-delivered letter prior to any planned water shutdowns. Any disruption to traffic flow will be minimal. If you require further information, please contact Gavin Hutchison, Utilities Asset Engineer, Tasman District Council – Ph. 543 7215 or 027 246 3726.

Tasman District Council appreciates your support during this important project and apologises for any inconvenience. Please note, no work will occur at weekends.

SURVEYING & RESOURCE MANAGEMENT

- Project Management
- Resource Consents & Planning
- Subdivision Design & Management
- Land Development Engineering

STAIG & SMITH^{TD}
ENHANCING THE LAND

81 Selwyn Place, Nelson • Ph 03 548 4422 • www.staigsmith.co.nz

OUR SPORTING PASSION!

CALENDAR

printhouse





MOTORBIKES AND SCOOTERS IN THE TOP OF THE SOUTH

Tasman District Council has been working with Nelson City Council, Marlborough District Council, ACC, the NZ Transport Agency and the Police on a Motorbike Safety Plan for the Top of the South Island.

The safety of motorbikes has been recognised as an area of high priority in the National Road Safety Strategy to 2020 and the local District has an above average number of crashes involving motorcyclists. After a particularly bad year it was important to stakeholders that the community road safety programme hit the ground running with initiatives to reduce injury and deaths. A safety plan has now been adopted and will be updated when necessary over the next two years.

One of the first parts to the plan has been to contract a trainer for the motorbike/scooter training and refresher courses. Roadsafe Motorcycle Riding Techniques Limited have been awarded the contract to run courses across the Top of the South Island, which will ensure training in all areas will be consistent. Roadsafe has over 15 years of road rider training experience and has trained over 15,000 people. The courses will cover riders of all ages, abilities and on all types of bikes, from 50cc scooters to the large cruiser style bikes. Courses cost from just \$20,

which is well under market value of over \$200, thanks to subsidies. The next dates are on Saturday 4 and Sunday 5 December 2010.

Another part of the plan is to look at forming a motorbike user group. This will initially be led by the road safety coordinators and include representatives from ACC, NZ Police and the NZ Transport Agency. This group will facilitate good 2-way communication between all parties.

Project leader, Council's road safety coordinator, Krista Hobday, says adoption of the plan has started a process that will ensure consistent training and education messages across the Top of the South, and although a work in progress, it is good to have made some definite steps in contracting providers and setting dates for courses.

If you want any further information or to register for one of the training or refresher courses contact Krista Hobday at Tasman District Council on Ph. 03 543 8551 or krista.hobday@tasman.govt.nz

Need cash for Christmas? Enquire today about a loan to help you over the festive season.

Our friendly staff can tailor a loan to suit your needs and even help you plan for next year's spending with our Christmas Saver Account. (Lending criteria and conditions apply).

Contact us today:
Nelson Branch: Shop 2A, 126 Trafalgar St
Richmond Branch: Shop 3, 250 Queen St

03 539 1700
www.nzcusouth.co.nz

nzcusouth
Your money, your goals, our help

Support & Respect through your loss

Email: support@wrfs.co.nz
Web: www.wrfs.co.nz
Corner Salisbury & Champion Roads, Richmond

544 4400

WAIMEA RICHMOND FUNERAL SERVICES


New Zealand Independent Funeral Homes Member.


Alistair Ferguson (Dip F.S.)

STUDENTS DIVE INTO MARINE RESERVES STUDY

The youngsters of Tasman are learning about marine reserves up close in a pilot programme running in the District this year.

Experiencing Marine Reserves (EMR) started in Northland in 2002 and is spreading throughout New Zealand. The whanau class from Parklands School in Motueka recently participated in the programme, which involves:

- An introduction to marine biodiversity
- Investigation and snorkelling in a local marine area (Little Kaiteriteri)
- Snorkelling at Mosquito Bay in Tonga Island Marine Reserve
- Comparing the local area and a fully protected area
- Action to protect the marine environment.

The whanau students want to inform Motueka residents that pollutants going down their drains can harm the marine life of Tasman Bay. During October and November 2010, groups of students are painting fish signs next to drains in the town and delivering an information leaflet to mailboxes.

The EMR programme is run under the auspices of the Mountains to Seas Trust and the Nelson Environment Centre, has been funded by the Tindall Foundation and is supported by the Tasman District Council and Department of Conservation.

Coordinator Megan Wilson plans to run two or three programmes in



Whanau class students from Parklands prepare to see a marine reserve up close.

term one of 2011. You can contact her on Ph. 027 663 8909 or email meganw@parklands.school.nz if you would like to know more. The programme also needs snorkelling gear. If you can donate any surplus masks, snorkels or fins in good condition, please contact Megan.

HIGGS RESERVE DAMAGE SPARKS COUNCIL RESCUE PLAN

Hard on the heels of the successful opening of the Ruby Bay Bypass, contractors employed by the NZ Transport Agency to finish off the project have unfortunately caused a significant amount of damage within the Higgs Reserve in Mapua.

In clearing large gum trees to make for a safer entry onto the Ruby Coast Scenic Drive and to provide for connections between the new car park and Higgs Reserve, a number of the large trees were felled into the reserve area damaging a section of the bush within this area.

"The bypass project is recognised for its interaction and relationship with the local environment and community. The damage to the reserve is the last thing anyone wanted, and Council is disappointed with the unfortunate outcome of this work," said Tasman District Council Transportation Manager Gary Clark.

"The Council recognises the significance of the Reserve to the people of Mapua and the Tasman District. To this end we have already put together an action plan to rectify the damage and are inviting a number of interested parties to play a role in the restoration work. The restoration work will include the replanting of the area and other measures to address the impacts created by the unfortunate events."

"Reserves such as the Higgs bequest are an important part of what makes Tasman unique and the Council treasures such community assets.

"We have made our disappointment clear in no uncertain terms to the contractors and agencies concerned regarding the damage they have caused and they will be contributing to the restoration work."

"Sadly, it is too late to prevent the damage in this instance, but we are certainly working very hard to rectify it here and to prevent it happening again", concluded Mr Clark.

Restoration work has already begun and will take a number of weeks to complete at no cost to ratepayers. The works are related to the completion of the Ruby Bay Bypass which is expected to take another 12 months. Planting of more significant native plants will occur as part of this process in the appropriate planting seasons.





Community Recreation **DECEMBER 2010**

The New World Motueka Starlight Parade

Friday, 3 December 2010

8.00 pm – 10.00 pm (parking at Decks Reserve and Tasman District Council carpark)

A magical night under twinkling Christmas lights. A variety of traditional and innovative floats meander down the town's main street providing entertainment to welcome the festive season. It's a real small affair with business and community getting together to celebrate and showcase Motueka.

Motueka – Xmas in the Park

Saturday, 4 December 2010, 3.00 pm – 7.30 pm, Goodman Reserve, Motueka.

MoreFM Xmas in the Park brings to you a variety of talented entertainers including Motueka South School Kapa Haka, Origin Dance Crew, and Koffee D Creme with a special guest Santa, spot prizes and much more!

Info: Ph. 03 528 8228 Email

Ria.a@mot.sporttasman.org.nz

Tasman Karaoke Superstars – Grand Final

Sunday 5 December 2010, Motueka A&P Show, Motueka Showgrounds, College Street, Motueka from 10.00 am

Don't miss the grand final of the Tasman Karaoke Superstars competition. Winners from the regional heats in each age group category will be battling it out for the glory of becoming Tasman's Karaoke Superstar!

Brightwater Community Carols By Glo-Lite

Saturday 11 December 2010, Snowden's Bush, 5.30 pm to 9.00 pm

Bring your family and your picnic tea to enjoy this community event.

Carol singing, Santa, Glo-lites, Sausage sizzle, Hot drinks, water and fizzy. Entry: Gold coin donation – All profits going to Brightwater BMX track. (If wet: Brightwater Hall).

Tiny Tots Toys and Teddies Party

Sunday 12 December, 2.00 pm - 4.00 pm (cancelled if wet) Washbourn Gardens, Richmond.

The magical and mystical Washbourn Gardens are set to become alive again for the fifth annual Tiny Tots Toys and Teddies Party featuring a solid lineup of entertainers, performers and activities to amuse young and old. So come along, bring your teddy, and join in the celebration.

Top Team 10 – Finals

Sunday, 12 December 2010

Junior Competition starts 9.00 am, Senior Competition starts 12.30 pm, Moutere Hills Community Centre, Moutere Highway, Upper Moutere.

Golden Bay Santa Parade

Saturday, 18 December, 2010, 10.00 am to 12 noon, Takaka Village Green.

A parade by Golden Bay's Collectable Vehicle Club, a visit by Santa plus performances by Takaka Citizens Band and other musicians.

Carols by Candlelight – Richmond

Sunday, 19 December 2010, from 7.30pm, Washbourn Gardens

The festive Christmas spirit will be alive and buzzing again at this year's Carols by Candlelight in the serene setting of Washbourn Gardens. The concert will once again include live performances from the Richmond Orchestra and Richmond Choral Group, along with special guests and surprises for the whole family to enjoy.

Carols By Candlelight – Golden Bay

Friday, 24 December 2010, 8.00 pm, Takaka Village Green

Come join our Carols by Candlelight choir for everyone's favourite traditional Christmas carols. Song Sheets and candles provided. Wet Weather Venue: Takaka Village Theatre.

Mike Tasman-Jones

Community Recreation Advisor, Tasman District Council

Ph. 03 543 8403 Email: mike.tasman-jones@tasman.govt.nz

Save your precious memories forever!

We can convert your old:

- Video
- 8/16mm film
- Slides
- Photos

to digital



Call us and save what you can't replace

5 Oxford Street, Richmond, Nelson
Ph. 03 544 1995
Email. info@digisafe.org.nz
Website. www.digisafe.org.nz



SEPCLEAN

LIQUID WASTE

Environmentally safe waste disposal specialists



Motueka (03) 528-7349
Richmond (03) 543-8248
Fax (03) 543-8247
Email sales@sepclean.co.nz
PO Box 3389, Richmond
Freephone **0800 725 326**

Septic tanks, sumps, grease traps and other liquid waste

NEWSUPDATE

RESOURCE CONSENTS

The Council has received applications for resource consent, which have been publicly notified in The Nelson Mail. The applications and supporting information may be examined in any Council office. The full public notice may be found online at Council's website (www.tasman.govt.nz). Any person may make a submission on the applications in accordance with Section 96 of the Resource Management Act 1991. Submission forms are available from Council offices and on Council's website. Please note that the following is an abridged advisory notice only.

Applicant: Coastal Vineyards Ltd.

Location: 42 & 50 Pukeko Lane, Redwood Valley.

Consent Type, Application Number and Proposal:

RM100330:

To Subdivide Lots 3 and 5 DP 402449 to create two additional titles to be located east of the existing right of way. The four resulting allotments will be 1.3644 hectares, 1.5177 hectares, 5280 square metres, and 5280 square metres in area, all less than the 2 hectare minimum lot size for this Rural residential Zone.

RM100331:

Land Use consent for building in the Coastal Environment Area and seven users on an existing right of way.

RM100375:

Land Use consent for earthworks in the Coastal Environment Area.

RM100376-RM100378:

Stormwater Discharge consents from proposed Lots 1, 2 and 5.

RM100379 – RM100381:

Wastewater Discharge consents from proposed Lots 1, 2 and 5.

The proposal is in a Rural Residential Zone and partially in a Coastal Environment Area as defined in the Tasman Resource Management Plan.

Submissions due: 4.30 pm on Friday 10 December 2010.

PUBLIC NOTICES

Brightwater Beach Volleyball Classic

Sunday, 19 December 2010

9.00 am registration for 9.30 am start, Brightwater Beach Club, Brightwater Recreation Reserve, Charlotte Lane (off Ellis Street), Brightwater, Competitive pairs competition, 4.00 pm finals.

Good music and BBQ, hosted by the Tasman Youth Council and the Waimea Volleyball Club Info: www.tyc.co.nz

24 Hour Emergency – Phone your local office

Richmond	03 543 8400
Murchison	03 523 1013
Motueka	03 528 2022
Takaka	03 525 0020

Tasman Newsline The Mag is produced by Dry Crust Communications for Tasman District Council and is printed by Printhouse on recycled/recyclable paper. For advertising and editorial enquiries please contact Dry Crust on phone 03 544 4975 or fax 03 544 4951.

PUBLIC NOTICES

Vote Motueka as New Zealand's Best Town

Motueka is up against Pukekohe, South Auckland, for the honour of Best Small Town. The winner will be decided in a public vote on the Keep New Zealand Beautiful website, www.knzb.org.nz, closing on 1 December 2010.



COUNCIL MEETINGS

Agendas and Minutes for Council Meetings can be viewed on Council's website at www.tasman.govt.nz

Environment and Planning Consents Subcommittee (Sec 357 Obj A & W Lane)

Tasman Council Chambers, 189 Queen Street, Richmond, Monday, 29 November 2010, 9.00 am. *No public forum*

Environment and Planning Consents Subcommittee (P Warren)

Tasman Council Chambers, 189 Queen Street, Richmond, Monday, 29 November 2010, 1.00 pm. *No public forum*

Environment and Planning Consents Subcommittee (Sec 357 Obj Biobalance Ltd; Kokcu; Sprig & Fern Motueka; Balgowan Investments)

Tasman Council Chambers, 189 Queen Street, Richmond, Tuesday, 30 November 2010, 9.30 am. *No public forum*

Creative Communities Subcommittee

Motueka Office, 7 Hickmott Place, Motueka, Tuesday, 30 November 2010 10.00 am. *No public forum*

Environment and Planning Consents Subcommittee (Carter Holt Harvey HBU Ltd)

Tasman Council Chambers, 189 Queen Street, Richmond, Monday, 6 December to, Wednesday 8 December 2010, 10.30 am. *No public forum*

Full Council

Tasman Council Chambers, 189 Queen Street, Richmond, Thursday, 9 December 2010, 9.30 am. *Public forum*

Audit Subcommittee

Tasman Council Chambers, 189 Queen Street, Richmond, Thursday, 9 December 2010, 1.00 pm or at the conclusion of Full Council. *No public forum*

NEWSUPDATE

ROAD CLOSURES

Pursuant to the Transport (Vehicle Road Closure) Regulations 1965, notice is hereby given that for the purpose of allowing Richmond Unlimited to hold the Richmond Santa Parade, the following roads will be closed to ordinary vehicular traffic for the periods and times indicated hereunder.

Roads to be closed to Ordinary Vehicular Traffic and Period of Closure Saturday 27 November 2010

Papps Car Park – 7.00 am to 1.00 pm

Edward Street-William Street to Queen Street – 9.30 am to 1.30 pm

Queen Street-Roeske Street to McIndoe Place – 11.30 am to 1.00 pm

Washbourne Drive-Queen Street intersection – 11.30 am to 1.00 pm

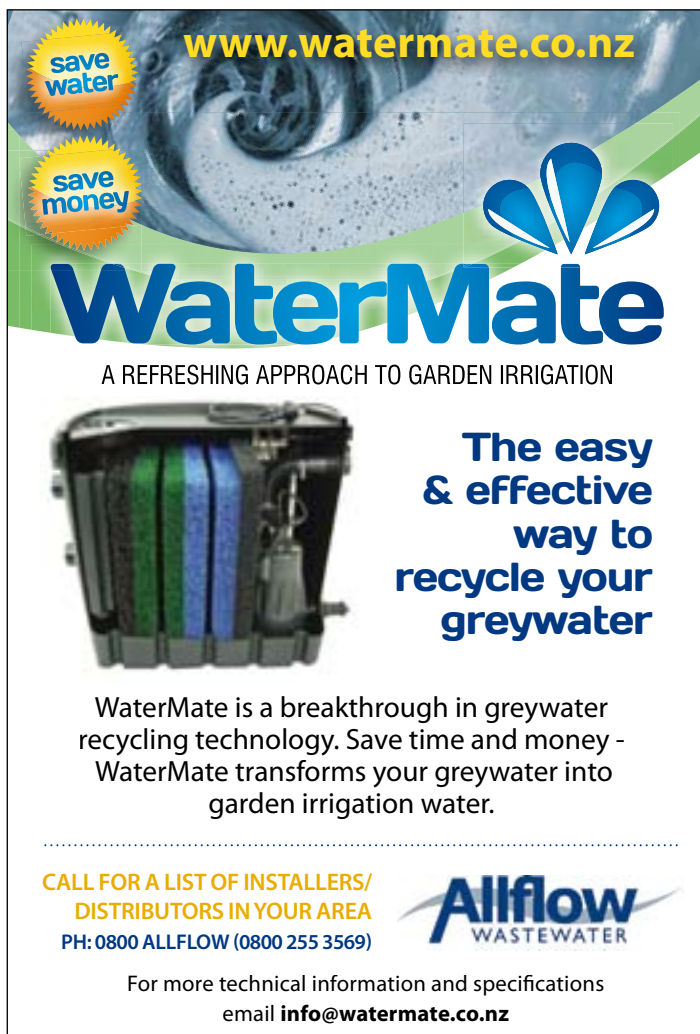
Salisbury Road-Talbot Street to Queen Street – 11.30 am to 1.00 pm

Oxford Street-Crescent Street to Queen Street – 11.30 am to 1.00 pm

Wensley Road-Oxford Street to Queen Street – 11.30 am to 1.00 pm

Cambridge Street-Oxford Street to Queen Street – 11.30 am to 1.00 pm

York Place – 11.30 am to 1.00 pm



save water
save money

www.watermate.co.nz

WaterMate

A REFRESHING APPROACH TO GARDEN IRRIGATION

The easy & effective way to recycle your greywater

WaterMate is a breakthrough in greywater recycling technology. Save time and money - WaterMate transforms your greywater into garden irrigation water.

CALL FOR A LIST OF INSTALLERS/
DISTRIBUTORS IN YOUR AREA
PH: 0800 ALLFLOW (0800 255 3569)

Allflow
WASTEWATER

For more technical information and specifications
email info@watermate.co.nz

EVENTS GUIDE

Nelson Sportsperson of the Year Awards

Friday 26 November 2010

Time: 6.30 pm - 10.30 pm

Venue: Hope Community Church, Ranzau Road, Hope, Nelson

Tickets: \$85 each from Sport Tasman.

Contact: Ph. 03 546 7910 email: rita.m@nel.sporttasman.org.nz

Run Mahana

Saturday 27 November 2010

Venue: Woollaston Estates, 243 Old Coach Rd, Mahana, Nelson

Contact: Ph. 03 545 8453 email: admin@nelsonsevents.co.nz

Richmond PAK 'n SAVE Santa Parade

Saturday 27 November 2010

Time: Parade starts at 12.00 pm (Rain date- Sunday 28 November)

Venue: Queen Street, Sundial Square, Richmond

Contact: Ph. 027 383 6863 email: santaparade@richmondunlimited.co.nz

EPIC Nights of Funky Dance Grooves @ The Mussel Inn

Saturday 27 November 2010

Time: 9.00 pm

Venue: Mussel Inn, Onekaka, Golden Bay

Contact: email: music@vortextribe.com

The Richmond Market

Saturday 27 November & 4 December 2010

Every Saturday 8.30 am - 12.30 pm

Venue: Sundial Square, Croucher St, Richmond

Contact: Ph. 03 544 4789 email: karl@homestylefoods.co.nz

Jack and the Bean Sprout

Friday 3 December 2010

Time: 2.00 pm

Venue: Hope Community Church, Ranzau Road, Hope, Nelson

Tickets from Operatunity Entertainment Ltd.

Contact: Ph. 0508 266 237 email: bookings@operatunity.co.nz

Music on the Lawn - Mr Nobody

Sunday 5 December 2010

Time: 12.00 pm- 4.00 pm

Venue: Woollaston Estates, 243 Old Coach Rd, Mahana, Nelson

Contact: Ph. 5432817 email: vanessa@woollaston.co.nz

AQHA-NZ South Island Closed Show

Tuesday 7-Wednesday 8 December 2010

Time: Tuesday 4.30pm, Wednesday 9.00 am

Venue: Rough Island Equestrian Park, Rabbit Island

Contact: Ph. 03 547 2250

email: goldenhills@quarterhorse.co.nz

For full event listings and details
go to www.itson.co.nz



FARM FORESTRY ADVOCATE WAS A PIONEER

So much so, Federated Farmers turfed Ross Higgins out for advocating farm forestry.

“Things were bitter, very bitter then,” says the longtime Wakefield resident, and recipient of a Tasman District Council Community Service Award.

Ross “set the pace” by stopping gorse clearance and planting trees instead. In the early 1950s this was heresy to sheep farmers who feared the loss of productive land.

A decade later the Government would be offering loans to plant trees. Waimea County Council also embraced forestry, “trying to clean the place up”, so Ross’s only sin was being ahead of his time.

He is no fan of radiata, and the chemical treatment it requires for uses such as fencing. Ross favours the more durable cypress and cedar. He established an arboretum at Wai-iti Reserve that bears his name. With a father of farming stock and a mother whose family was involved in sawmilling, you could say the course of his life was settled at birth. (The Higgins line extends to the first migrant ships into Nelson).

He served on the Nelson Catchment Board from 1958 to 1967 and was a member of the Waimea County Council from 1974 to 1980. As councillor for the Wai-iti ward, Ross was active in projects such as the 88 Valley Water Scheme, building the Tapawera Bridge and the Lower Motueka River bridge.

After two terms he was unseated by just seven votes. He bought land in Pigeon Valley that was being abandoned by a tobacco grower. Ross had been impressed with Japanese cedar he had seen in Taranaki while at a farm forestry conference, so he went looking for seedlings. By chance Appletons nursery had a huge quantity on its hands from a cancelled order.

Ross planted the half-price seedlings on his block. Four decades later they have been valued at \$1000 a tree. Ross laughs that he wants to send out a message to those seven voters asking them to come to his office and he’ll give them a million dollars each.

Brass band music was another love. Ross played the B-flat bass tuba and helped to set up the Wakefield Citizens Band, which played in the 1960s and 70s.

He was also the driving force behind the Pigeon Valley Steam Museum. Ross had his steam ticket – he had been around the engines on the family farm since he was 8 years old. He helped an old sawmiller to build a steam-engined mill. When people started arriving with logs, the operation had to become legal. Over the years old cars and traction engines joined the mix.

Now in his mid-80s, Ross lives in a retirement complex in Richmond. “The world came to an end” when he lost his wife of 60 years, Edna, earlier this year. But Ross keeps busy and is looking forward to the reunion of “train bugs” who rode the line from Wakefield and Brightwater into Nelson each day for schooling.

He and Edna had four children, who have furnished a horde of grandchildren and great grandchildren to enrich his life.

Ross also has a cheeky outlook to sustain him. As he was heading out to be interviewed for Newsline he quipped to resthome staff that the police wanted to talk to him.

“If I don’t come back I’ve been arrested.”



Ross Higgins.



Quality from start to finish

Contact Fulton Hogan for all your contracting requirements:

- Site Works
- Subdivisions
- Drainage
- Asphalt Paving & Sealing
- Retaining Walls
- Driveways
- Roading
- Aggregate Supply

121 Bolt Road Nelson, Phone: (03) 547 9789
www.fultonhogan.com

