

# Newsline



Keeping you informed about news and events in Tasman District



Moturoa/Rabbit Island

Reduced debt to benefit ratepayers **P.3**

Queen Street conversation to begin **P.5**

News from the libraries **P.8**

## Moturoa/Rabbit Island – tell us what you love

**It's time to review our management plan for some of our most treasured reserves – Moturoa/Rabbit Island, Rough Island and Birds Island.**

This summer we'll be seeking your feedback on what you value about Moturoa/Rabbit Island and how you would like it to be managed now and in the future. Council staff will be spending time on the island talking to people enjoying the area, as well as inviting comments via our website and social media.

This feedback will guide our review of the current management plan, which is well overdue for a rethink, having been originally written in 1989. The existing plan designates the islands as appropriate for peaceful seaside recreation, including picnicking, swimming, horse riding, cycling and walking, as well as for sports such as triathlon, land yachting and orienteering. It also spells out the way we manage the commercial plantation forestry.

### Some things to consider:

We want to find out how you feel about the islands, whether you think they are perfect just as they are, or if you can see room for change or improvement. Examples of some areas worth thinking about include:

- Are interactions between different uses and activities on the islands compatible or do they create conflicts? How should any conflicts be managed?
- Do you think the location of existing activities is appropriate?
- Should we continue the tradition of keeping recreation areas free of commercial activities?
- Could natural values (bush remnants, wetlands, bird habitat etc) be managed differently?
- How should we respond to issues such as coastal erosion and rising sea-levels?

### Let us know what you think:

To make a comment on the future of Moturoa/Rabbit, Rough and Bird islands, you can:

- Visit our website for detailed information on how to get involved in the conversation [www.tasman.govt.nz/feedback](http://www.tasman.govt.nz/feedback)
- Keep an eye out for us at Moturoa/Rabbit Island over the summer holidays and come and have a chat.
- Invite our policy adviser to come and talk to your group or organisation. Contact Anna Gerraty on Ph. 03 543 7281 to arrange a time.

### Timeline:

- **November 2015 – February 2016:** Gathering public feedback to inform a first draft.
- **30 April – 30 June 2016:** Draft management plan open for public submissions.
- **August 2016:** Hearings on the draft plan.
- **September 2016:** Final plan confirmed.

# Message from the Mayor

**With summer drawing closer, I am reminded of the beautiful District we live in and the excellent facilities that we as residents are able to enjoy and which we can offer to those visiting our great region.**

A significant Tasman attraction are our cycle trails, which boast some of the most breathtaking scenery you will see anywhere in New Zealand. In co-operation with the Nelson Tasman Cycle Trails Trust, the Council recently wrote to the Prime Minister to formally seek his support for Government funding to enable us to complete Tasman's Great Taste Trail. We should all be immensely proud of Tasman's Great Taste Trail and the support so far from the community has been tremendous.

Working collaboratively is something the Council feels is of fundamental importance in order to enable a very enjoyable lifestyle for locals and visitors alike. Our aim as a Council is to make good decisions for the District as a whole and we strive, in our position to serve the community to act for the betterment of all. There are times when unfortunately this does not match with the requests of individual members of the community. One of the things highlighted to me recently is the absolute importance, whether it's Council or the people we are working with, of being respectful to one another. We can't always deliver on individual requests, but it is important to value ourselves as a community and always aim to treat one another with courtesy and a mutual respect.

**Mayor Richard Kempthorne**



## New Richmond Water Treatment Plant open

**The new Richmond Water Treatment Plant in Lower Queen Street was officially opened on 29 October 2015 by Hon Dr Nick Smith, Tasman Mayor Richard Kempthorne and chair of the Engineering Services Committee, Cr Trevor Norriss.**

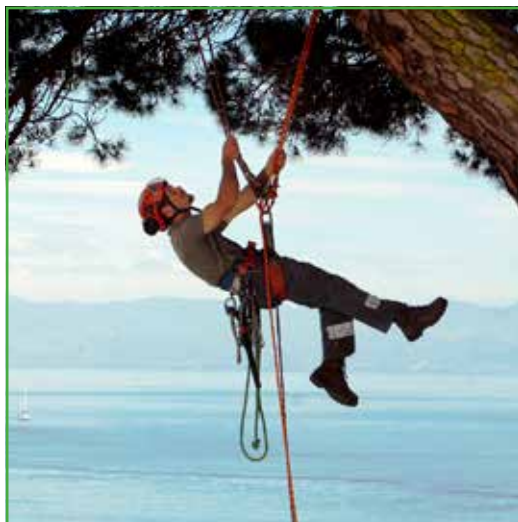
The \$9.5 million treatment plant, on the corner of McShane Road and Lower Queen Street, was built to comply with updated national drinking water standards and meet increased demand for water in Richmond.

The ultra-violet light treatment process means there is no longer any need to chlorinate Richmond's water. In addition, the new plant blends water from Richmond's two supply networks – Waimea and Richmond, which means all the water is of consistent quality and also creates a more secure supply.

The plant currently supplies about 7500m<sup>3</sup> of water per day (this will increase in summer) and is designed to supply 15,400m<sup>3</sup>/ day.

The total cost of the project, which included detailed design, project management, building costs, and upgrade and installation of new

pipework, was \$11.5m. Our thanks to all residents and businesses for their patience during the construction.



## TASMAN'S TOP TREE TEAM

Nelmac Tree Care is #1 in the top of the south.

Call us for a free quote for: canopy reduction, tree removal, pruning, hedges & all tree work.

**0800 635 622**



# Reduced debt to benefit ratepayers

With our finances in a strong position we have taken the opportunity to reduce debt, which will have a positive flow-on effect for rates.

As we explained in an earlier edition of Newline, a combination of operational savings and favourable external conditions, such as lower interest rates and lower inflation, means our debt for the 2014/2015 financial year is \$27 million lower than projected. We also achieved an operating surplus of \$8.6 million.

Having already reduced our external debt, we are now taking the opportunity to retire internal loans, top up our emergency funds and transfer money to reduce deficits in some of our activities.

Paying off internal loans reduces our interest costs and will help reduce the amount of income we need from rates.

Some of the activities of Council that have deficits will be topped up using surpluses that have built up over time in other activities. Internal loans and examining each activity's surplus or deficit individually helps ensure financial accountability across our many areas of activity.

Putting more money into our emergency funds, which were depleted by large floods in 2011 and 2013, will help us meet the cost of future natural disasters.

This is all in line with the strong message we received from the community when we were developing our Long Term Plan that you wanted us to reduce debt and maintain a focus on prudent financial management.

## What are we doing?

\$9.2m

REPAYING INTERNAL DEBT

\$870,000

INCREASING EMERGENCY FUND BALANCES

\$715,000

INTERNAL TRANSFERS TO PAY OFF DEFICITS

## What are internal loans?

Internal loans are when one of our activities or departments borrows the money it needs for a project from what is effectively our internal bank. Activities with surpluses or reserve funds deposit these with the internal bank, which lends this money out to other activities that need it. As with a normal bank, interest is charged on loans and paid to those with balances in credit. This allows us to keep our external borrowing as low as possible.

## Moturoa/Rabbit Island tracks closed

The western end of Faulkners Track and Higgins Road are both closed until Friday 27 November 2015 to ensure public health and safety while contractors undertake work in those areas.

All the other roads and tracks on the island are open, including Tasman's Great Taste Trail.

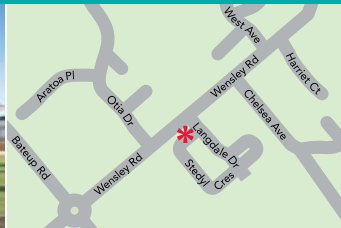
Access to the ferry is also open.



## SHOWHOME EXTRAVAGANZA



\* 2 Stedyl Crescent, Richmond



### \* SHOWHOMES

2 & 4 Stedyl Crescent  
Richmond  
OPEN Monday to Friday  
11.00am-4.00pm  
Saturday & Sunday  
1.00pm-4.00pm



\* 4 Stedyl Crescent, Richmond

G.J. Gardner Homes are acknowledged for their innovative design concepts. Our designers are continually coming up with fresh ideas and creative living plans. Here's your chance to view some of their latest ideas incorporated into a stunning new designer showhomes. Design innovation is just one more reason why more people build with G.J. Gardner Homes every year than any other builder.

Phone 03 543 9502  
0800 42 45 46 www.gjgardner.co.nz

NELSON OFFICE 195 Queen Street, Richmond  
OPEN Monday to Friday 8.00am-5.00pm

**G.J. Gardner.** HOMES

# Microchip your dog for free

**This month we are offering free microchipping for dogs registered in the District.**

Microchipping is a legal requirement for dogs born after June 2006. The only exception is for dogs kept solely or principally for the herding or droving of stock.

Animal control officer John Bergman encourages dog owners to microchip their pets as early as possible. "Microchipping is the best tool we have for reuniting lost, stolen, or stray dogs with their owners."

Failing to have your dog microchipped is an offence under the Dog Control Act 1996, the penalty for which is an infringement fine of \$300.

## Microchips:

- are the size of a grain of rice and implanted under the skin just forward of the shoulder blades going up the neckline
- carry a number unique to your dog
- are a transponder which responds to a scanner
- are not a transmitter, there is no power source
- details are kept on the National Dog Database, managed by the Department of Internal Affairs.

## Free microchipping clinics:

See the table below for times and places we will be offering free microchipping. For further information Ph. 03 543 8407.

Area	6 Nov	11 Nov	12 Nov	13 Nov	18 Nov	19 Nov	20 Nov
<b>Richmond:</b> Dog Pound, 121 Beach Road	8.00 am – 10.00 am			8.00 am – 10.00 am			8.00 am – 10.00 am
<b>Motueka:</b> Council Service Centre, 7 Hickmott Place			8.30 am – 11.00 am			8.30 am – 11.00 am	
<b>Takaka:</b> Golden Bay Recreation Park			12.30 pm – 2.30 pm			12.30 pm – 2.30 pm	
<b>Tapawera:</b> Tapawera and Valleys Museum (Kiwi railway station building) car park		9.00 am – 11.00 am			9.00 am – 11.00 am		
<b>Murchison:</b> Council Service Centre, 92 Fairfax St		12.30 pm – 2.30 pm			12.30 pm – 2.30 pm		

## What's the Gig idea?

**Do you have a great idea that will contribute to the growing reputation Nelson-Tasman has as one of New Zealand's digital centres?**

Maybe your organisation has an innovative concept that ultra fast broadband (up to 80 times faster than normal ADSL) can help you bring to life. Maybe you're an entrepreneur working away in your garage day and night. Maybe you're a not-for-profit group collaborating to build stronger communities. Or maybe you're a business looking to take on the world.

Whatever your idea and whoever you are if gigafibre can help – enter the Grab a Gig competition.

**See [www.ndfs.org.nz/gig](http://www.ndfs.org.nz/gig) for details on how to enter. Entries close 15 November 2015. Finalists will be notified and invited to pitch their idea to the judges at a Dragon's Den-style event on 2 December 2015**

## Online payments up and running

Our new internet banking and credit card payment options are now fully up and running. They make it easier to pay for a wide range of Council services, including dog registrations, building and resource consents, and rates and water.

A full list of the types of payments you can make via internet banking and credit card are available on our website. Please make sure you check the site to find the references you will need for internet banking, as this is the only way for us to match your payment to your account.

See <http://www.tasman.govt.nz/pay> for the full table of payment types and instructions.



# Conversation on Queen Street to begin

**As part of major flood protection works in Richmond, we will be reprofiling the surface of Queen Street. This will prevent water flowing towards business entrances, as happened in the major flood of 2013 causing business stress, costs and inconvenience to business owners and the general public.**

The work also gives us the opportunity to improve the accessibility, safety and functionality of Queen Street when we reinstate the street, and we're keen to get your input into the design. We have allocated \$380,000 to the reinstatement, which will include the pavement, road surface, kerb and channel, street furniture, lighting, signage, grating and plantings.

Consultation on the project is about to begin, and we will be talking to local businesses, property owners, shoppers, Richmond people, and organisations concerned with access and mobility.

We're aware that, while the end result will reduce the flood risk for businesses in Queen Street, the work will cause disruption while construction takes place. Businesses will be involved in discussions about how the work is staged to try to minimise this as much as possible.

Construction is anticipated to start in August 2016.

## About the project

A \$22 million project, spread over 10 years, will see the stormwater system in central Richmond upgraded, and water and wastewater pipes replaced. The end result will be a system that can cope with a one-in-100 year flood. As part of this project Queen Street will be dug up, pipes underneath replaced, and the crown of the road lowered. The work along Queen Street is set to cost \$4.2 million over two years.

## Have a say

**Information about the Queen Street project will be on display at our Richmond office and at the Richmond Library from 13 November 2015.**

**Information and a feedback form will also be available on our website from 13 November, [www.tasman.govt.nz](http://www.tasman.govt.nz).**

# Odour risk being monitored in Motueka

**Staff are monitoring the risk of odour at the Motueka Wastewater Treatment Plant.**

The plant is being upgraded to allow new, larger aerators to be installed. Three have been installed so far. The aeration basin has to be empty to allow concrete foundations to be poured for the remaining aerators. To allow this, all wastewater from Motueka, Riwaka and Kaiteriteri has been bypassing the aeration basin for several weeks and been diverted into the oxidation pond.

A large amount of sludge was found in the aeration basin after it was emptied and delays have occurred getting desludging equipment to site. There are indications that the oxidation pond is becoming overloaded from lack of aeration, and if this situation worsens there

is the potential for odours. Northerly or sea-breeze wind conditions could send these odours towards Motueka.

Current timeframes indicate the aeration pond will be operational in four to five weeks.

In the meantime, the Council is monitoring the situation and has contingencies in place, including installing two additional aerators at the inlet to the oxidation pond.

**If you have any questions, please contact us,  
Ph. 03 543 8400**



# Do your trees hang low?

**Has your garden grown like mad over spring? If so, then now may be a good time to check that your vegetation hasn't become a nuisance to others.**

If you have a hedge, shrubs or trees that grow alongside a footpath it's up to you to make sure they don't grow too far out, making it hard for others to pass.

Now is an excellent time to give plants a trim, so take a walk around your property and check if a haircut is needed. Make sure you consider whether the footpath is easily passable for those in wheelchairs, on mobility scooters, or with prams – don't just look at it from a pedestrian's point of view.

Is there sufficient room for people to pass each other? If not, it's time to reach for the clippers.

Overhanging tree branches are also a problem. If you have a tree growing near a footpath you need to make sure tree branches are trimmed right back to your boundary. Trees overhanging footpaths become a problem in wet weather when the water weighs the branches down and they drip on footpath users.

Please check out your boundary and let common sense be your guide because it is up to you to make sure nothing from your property is obstructing the footpath.

The examples above demonstrate what is good and what's not.

**If you'd like further information on this topic please contact the Council, Ph. 03 543 8400**

# Trust to manage historic Tasman wharves

**A new trust will be established to take over responsibility for restoring and maintaining five historic wharves in the Tasman District.**

The trust will fundraise to pay for the repair and upkeep of the wharves at Mangarakau, Collingwood, Waitapu, Milnthorpe in Golden Bay and Motueka Quay, which have deteriorated over time.

The wharves are currently owned by the Department of Conservation (DOC) and have not been maintained. Several community members have put their hands up to become trustees and DOC has indicated it is comfortable with transferring control of the wharves to the new entity once it is formed.

The trust will be responsible for administering and repairing the wharves to a safe standard. This will also keep the wharves in public ownership.

**Anyone interested in getting involved with the trust can contact Cr Paul Sangster, Ph. 03 525 9030**

**SURVEYING & RESOURCE MANAGEMENT**

- Project Management
- Resource Consents & Planning
- Subdivision Design & Management
- Land Development Engineering

**STAIG & SMITH LTD**  
ENHANCING THE LAND

81 Selwyn Place, Nelson • Ph 03 548 4422 • www.staigsmith.co.nz

**FLETCHER VAUTIER MOORE**  
LAWYERS

Providing legal advice on property and business matters

**Jo Bruning**  
Legal Executive  
jbruning@fvm.co.nz

**Zoe Bond**  
Senior Solicitor  
zbond@fvm.co.nz

265A Queen Street, Richmond Ph: (03) 543 8301

# Keep it peaceful for nesting birds

It's breeding season for vulnerable bird species nesting on our rivers and coast. These birds are easily frightened by noise and disturbance, so please think twice before driving vehicles along riverbanks or beaches.

The Waimea River in particular attracts a lot of vehicles. Over the past few weeks a quad bike was seen driving dangerously close to pied stilt nests containing eggs and chicks. The number of vehicle tracks seen near the nests is of concern and we're urging people to avoid driving in the area to prevent nests being destroyed.

A group of 15 black-fronted terns seen nesting near the Waimea had gone when Council staff returned several weeks later, either scared off by noise and activity or they may not have been breeding.

Several species nest on gravel river beds in Tasman. Some of these, such as black-fronted terns and black-billed gulls, are threatened and their numbers are in decline.

To keep nesting areas safe and attractive for these birds, please avoid using our rivers and riverbanks like a road.

As well as scaring off birds, vehicles also squash riffle-dwelling fish, such as torrentfish and blue-gill bully. Riffles are the shallow, fast-moving, "babbling" sections of the river – this tends to be the place where most vehicles drive through.



A pied stilt chick and eggs by the Waimea River.  
Photo credit: Jeroen Lurling

## Takaka seminar to answer consent questions

Can you build it without consent? Find out at a free seminar in Takaka, which offers a chance to ask questions about building consents, resource consents and LIM (land information memorandum) reports.

Our Environment and Planning Manager, Dennis Bush-King, will cover topics such as when building and resource consents are needed and when they're not, an explanation of the process for applying and gaining consents and information on what you need to do to make sure your application is a good one.

Dennis will also explain the information we hold about properties, and how this can be used when and buying or selling a property.

### When and where?

Session one: 10.00 am, 13 November 2015

Session two: 1.00 pm, 13 November 2015

Both at the Takaka Fire Station, Motupipi Street, Takaka

For more information: Contact Laura Page,  
Takaka Service Centre, Ph. 03 525 0020

## IS YOUR WATER SAFE?

Get the BEST from your water!  
Take the WORST out of it!

- Water Purification
- Filtration
- UV Sterilisers
- Giarda Filters
- Water Softening

WATER TESTING SERVICE  
AVAILABLE.



thinkwater®  
TASMAN BAY  
BEYOND IRRIGATION

397 HIGH STREET MOTUEKA.  
PHONE: 03 528 8888



The specialists in design, supply and installation of domestic & horticultural irrigation, drainage, effluent & septic systems, pumps, water harvesting & tanks and water treatment & filtration.

# Writechoices

## Law for Lunch at Motueka and Takaka

Do you have questions about wills and estates? Do you understand how employment law works? Find out more at our free Law for Lunch talks at Motueka and Takaka Libraries.

Simon Jones from Nelson Bays Community Law Service will be talking about employment law at Motueka Library on 9 November at 12.10 pm and at Takaka Library on 12 November at 12.00 noon.

And later in the month Simon will introduce you to the ins and outs of wills, estates and powers of attorney at Motueka Library on 24 November at 12.10 pm and at Takaka Library on 26 November at 12.00 noon.

All delivered in easy to understand, user-friendly language and for free. Bring your questions – and your lunch.

## Dare to Read – Tasman's summer reading experience

Over the past few years our summer reading programme for kids has been hugely popular. This year we're changing it up so that it's easier for families to take part. The only requirement is that the kids are 5-12 years old and are Tasman District Libraries members. There are no restrictions on the number of participants and a longer period for registration and check ins.

Registrations open on the library website on 7 December and remain open until 8 January 2016.

All the kids have to do is read a minimum of three books, complete at least three tasks and report in three times between 14 December and 29 January 2016.

Dare to Read is running at all our Tasman libraries. You can even complete some check ins online.

***Dare to read – it might change your life!***

## All Guts, No Glory book launch at Richmond Library

We're familiar with the stories of local Tasman and Nelson men and boys who fought on the frontline in appalling conditions in World War I.

But how many of us know about the brave women and men who tended to the wounded and dying, often very close to the firing line?

All Guts No Glory is the story of the courageous nurses and chaplains from the Nelson Tasman area. Compiled by Cheryl Carnahan and researched by members of the NZ Society of Genealogists Nelson Branch, All Guts, No Glory brings to life their unsung heroism and commitment.

Join us to celebrate the launch of this important piece of our local history. Cheryl and the other researchers will be launching the book at Richmond Library on 11 November at 5.30 pm. Light refreshments will be served.

Copies of the book will be available for purchase and signing.

## Health information drop in sessions at Richmond Library

We have three information drop in sessions scheduled at Richmond Library in November.

The first two sessions focus on epilepsy. If you would like information about this often misunderstood condition, staff from Epilepsy New Zealand will be at Richmond Library on 16 November, 11.00 am – 12.00 noon and again on 18 November, 1.00 pm - 2.00 pm.

And our usual monthly Alzheimers and dementia information session runs 9.30 am – 11.00 am on 25 November.

These information drop in sessions are an informal way to find out about particular health issues and to get answers to your questions. Bookings are not necessary - just turn up and have a chat.

***Your library – bringing your community together***

## Book a Librarian service

Having trouble downloading a library e-book or setting up an email account? You can now book a free 45 minute one-on-one session with one of our friendly library staff at Richmond Library.

"It's great to get this service up and running", says Information Services Librarian Helen McCubbin. "We're now able to spend longer and dedicate one-on-one time with customers."

Some examples of the types of things we can help with are using the library website and catalogue, research help, downloading e-books and e-audio, accessing family history information and slide scanning.

The Book a Librarian service is only available at Richmond Library at this stage.

For more information or to book a session go to the library website Services page.

## e-book tuition

Did you know that the library has a great selection of downloadable e-books? Do you know how to access them?

During November Motueka Library is offering free library e-book download tuition.

These one to one sessions are available for borrowers wanting to learn how to download and read library e-book or e-audio books on their laptop, e-reader, tablet or mobile phone.

Sessions run every day 2.00 pm - 3.00 pm from Monday to Friday.

Phone 03 528 1047 today to book your session.

## Mystery Ink

Fun, games, prizes, food!

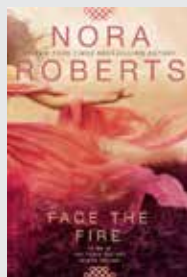
Party time at Mystery Ink! Come along and join in for our annual pizza special with surprise guest!

Mystery Ink is Richmond Library's group for teens where you can discuss what's hot and new in books, music, and movies.

A great opportunity to meet new people and have a bit of fun.

All welcome, ages 12-17, on 3 December 2015 from 3.30 pm – 5.45 pm.

## New in the library



**Face the Fire**  
by Nora Roberts



**War of the Whales**  
by Joshua Horwitz



**The Forgotten Garden**  
by Kate Morton

Check our website out for yourself at  
[www.tasmanlibraries.govt.nz](http://www.tasmanlibraries.govt.nz)



## Resource Consents

The Council has received applications for resource consent, which have been publicly notified in The Nelson Mail. The applications and supporting information may be examined in any Council office. The full public notice may be found online at Council's website ([www.tasman.govt.nz](http://www.tasman.govt.nz)). Any person may make a submission on the applications in accordance with Section 96 of the Resource Management Act 1991. Submission forms are available from Council offices and on Council's website. Please note that the following is an abridged advisory notice only.

**Applicant:** Harakeke 2015 Limited

**Location:** In the Aporo Road, Mamaku Road, Marriages Road, Horton Road and Permin Road area between Tasman Village and Ruby Bay

### Consent Type, Application Number and Proposal:

This application seeks resource consents for a significant residential and commercial development either side of Aporo Road. The proposed residential development is designed in several rural-residential clusters across the 178 hectare site, with the apartments and commercial activities in a new village centre.

### Subdivision Consent (Application RM150576)

To subdivide 17 existing computer freehold registers (CFRs) with an overall area of 177.8278 hectares to create 130 rural residential-style allotments; 55 apartment allotments; 2 commercial apartments; Lot 700 walkway to vest as local purpose reserve; Lot 701 to vest as esplanade reserve; Open Space allotments Lots 702-710 and 714-716; three utility allotments Lots 711, 712, 713; a separate title for an historic pa site; and Lots 720, 721, 722 and 723 to vest as road, within a Rural 3 Zone.

### Other Consents

Eighteen other associated consents are being sought, for:

- land use activities including dwellings, apartments, commercial buildings and activities; earthworks, and the removal and replacement of contaminated soil and for the proposed change to residential activity in accordance with the National Environmental Standard (NES) for Assessing and Managing Contaminants in Soil to Protect Human Health Regulations 2011;
- discharges of potentially contaminated stormwater to land where it may enter water during the construction phase; and to discharge stormwater from each of the residential allotments, and from apartments and commercial areas;
- discharges of wastewater from apartments and commercial areas, and from individual allotments;
- a water permit to change conditions of taking groundwater to transfer use from irrigation to community supply;
- to carry out works in the bed of a waterway for the purpose of channel realignment and the placement of boulders and woody debris within waterways; to discharge sediment-laden water from land disturbance activities and works in waterways; to divert and dam water for new waterbody channels and wetlands and bypass; to dam and divert flood waters, including by earthworks that raise the level of the land and by structures.

The land is zoned Rural 3 according to the Tasman Resource Management Plan.

**Submissions due:** 4.30 pm on Monday 23 November 2015.

## Public Notices

### Old cabins make way for new at Motueka campground

The sale of eleven 60-year-old cabins from the Motueka Top 10 Holiday Park will make space for updated accommodation for holiday-makers. We are selling the old cabins in order to create room for 10 new cabins, which will increase the number of cabin beds from 33 to 50. The money from the sale will go back into the holiday park upgrade, which also includes improvements to roading and drainage.

The old cabins all have Residual Current Devices (RCDs) and are fully wired so they can be powered easily on other sites.

The cabins are for sale by tender, and **tenders close at 4.00 pm on 13 November 2015**. Purchasers will be responsible for removing the cabins from the holiday park, using an authorised removal party.

To register interest and request a tender pack, contact:

Rhonda Marshall, Administration Officer – Commercial  
Tasman District Council, 189 Queen Street, Richmond 7050

Or Email: [Rhonda.marshall@tasman.govt.nz](mailto:Rhonda.marshall@tasman.govt.nz).

### Waka Ama Regatta

Between **2.00 pm and 7.30 pm on Friday 13 November 2015** and **between 8.00 am and 5.00 pm on Saturday 14 November 2015**, (back-up day 15 November 2015, 8.00 am–5.00 pm) the areas of Kaiteiteri Bay shown below are reserved for Motueka Waka Ama Club's annual 'Waka te Tasman' regatta.

A speed-limit uplifting is also in force for certain vessels directly involved in the regatta, as shown within the red line on the left-hand side image below.

Vessels wishing to transit through or use the reserved area during the event may do so only after consulting with the event organisers, and then may only do so if and when, and under such conditions, that the event organisers may choose to specify. Delays can be expected, but access will not be unreasonably denied.

Event communications are on Channel 17 on Marine VHF radio. If in doubt, call 'Race Control' or consult an event Marshall (who will be wearing a high-visibility vest). Vessels entering or within the reserved area are required to comply with any direction given by the event organisers or event officials as if it were a direction given by the Harbourmaster.

Race co-ordinator: Todd Jago, Ph. 0274 335 040.





join our community:  
Twitter • Facebook • Website

## Public Notices

### Notice of Road Stopping

Tasman District Council is notifying its intention to stop a portion of unnamed and unformed legal road which runs alongside the Anatoki River from the southern end of McCallum Road to a dead end where the legal road stops. The proposal to stop this section of unformed road is being considered pursuant to Schedule 10 of the Local Government Act 1974. The road proposed to be stopped is shown as Section 1 on SO Plan 487432. The land area is 1.6429 hectares.

The road stopping application is being made by Rainbow Valley Community Ltd which owns freehold land adjacent to the road to be stopped. The road itself is 40m wide in most places. If the road stopping is approved, the public will retain the right to use a minimum of 20m of public road and other public land adjacent to the Anatoki River. If the applicant is able to acquire the land involved, it has offered a 10m wide esplanade strip alongside the Anatoki River where there is no legal access at present. When combined with the 10m wide esplanade strip, public access will be possible from the northern end of McCallum Road to the Southern end, alongside the river.

A number of dwellings encroach onto the legal road corridor. The proposal is intended to improve legal access alongside the Anatoki River, while allowing the applicant to acquire the legal road underneath the dwellings.

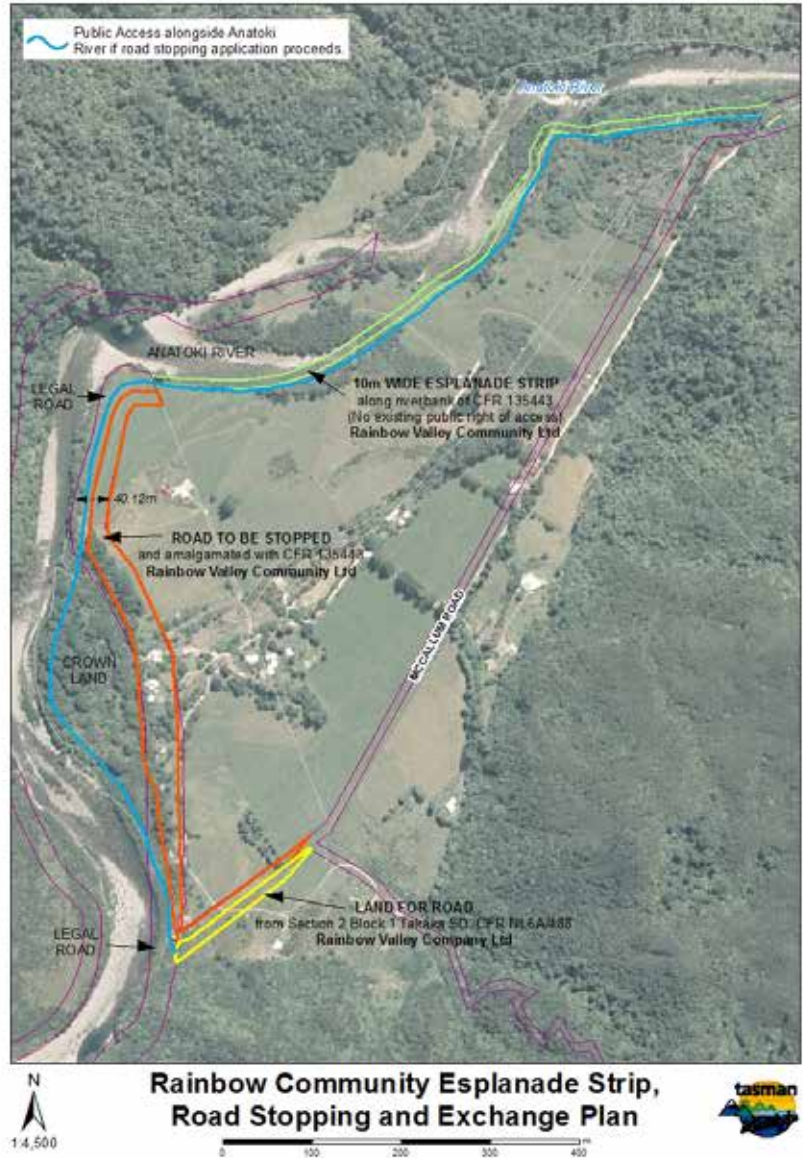
An unformed portion of McCallum Road is to be moved slightly to the south. The width of the road will remain the same.

Plans of the proposed road stopping are available by Email: [info@tasman.govt.nz](mailto:info@tasman.govt.nz). Plans may also be viewed at the Takaka Service Centre and Richmond Office of the Tasman District Council. Copies of plans, and this public notice, will also be available on the Council's website.

For further information please contact Robert Cant at Tasman District Council on Ph. 03 543 8400 or by Email: [robert.cant@tasman.govt.nz](mailto:robert.cant@tasman.govt.nz)

**Any objections to the proposed road stopping must be made in writing to the address below and must be received no later than 4.00 pm on Friday 18 December 2015.** This is the first of the two notices required under the Local Government Act 1974.

Valerie Gribble, Executive Assistant, Corporate Services Department  
Tasman District Council, Private Bag 4, Richmond 7050  
Email: [valerie.gribble@tasman.govt.nz](mailto:valerie.gribble@tasman.govt.nz)



"Lets make  
Nelson Tasman  
violence free"

TE RITO NETWORK  
NELSON TASMAN VIOLENCE-FREE

[www.nelsontasmanterito.org.nz](http://www.nelsontasmanterito.org.nz)

IT IS  
OK TO ASK  
FOR HELP

0800 456 450  
[www.arehouseok.org.nz](http://www.arehouseok.org.nz)

Tired of your  
rubbish piling up?

Get Council rubbish bags from any  
Tasman District Council office.

Small bags (45 litres):  
\$1.80  
Big bags (60 litres):  
\$2.25



## Public Notices

### Summer Irrigation Water Metering

This message is for holders of water resource consents (water permits) in the Tasman District subject to water metering.

Weekly meter readings re-commenced for the summer irrigation season from Monday 26 October 2015.

If you have any queries surrounding water metering requirements, please contact the Council as soon as possible. The Council staff members responsible for the water metering project are:

Jim Trembath: Ph. 03 543 8412, Email: jim.trembath@tasman.govt.nz

Vicky Thorn: Ph. 03 543 8567, Email: vicky.thorn@tasman.govt.nz

### Intention to Prepare Management Plan for Moturoa/Rabbit Island

You are invited under s.41(5) Reserves Act 1977 to send written suggestions to Tasman District Council on the proposal to prepare a management plan for the recreation and local purpose (plantation) reserves on Moturoa/Rabbit Island, Rough Island and Birds Island. Written suggestions need to be lodged with Council (c/- Strategic Policy) by **29 February 2016**. Information about the natural/historic/recreational/other resources of the reserves is available on the Tasman District Council website (search for Moturoa/Rabbit Island).

## Community Notices

### WAKEFIELD SCHOOL TWILIGHT GALA

**Saturday 7 November 2015, 3.00 pm – 6.30 pm,  
Wakefield School, Edward Street, Wakefield**

Live entertainment. A great family evening out!

Fantastic local fare (**Gluten free options available**), Fantastic stalls, Silent Auction, Plants, Produce, Books, Toys, Clothing, White Elephant, Mystery Boxes, Inflatables, Shooting Gallery, Digger Rides, Horizontal Bungee, Haunted House, Face Painting, Animal Petting Zoo & more! Please note the gala will run wet or fine!

## Affordable Professional Funerals

We can provide every service and option, and leave you with memories of a lifetime of love.

**03 544 4400 • www.wrfs.co.nz**



**WAIMEA RICHMOND  
FUNERAL SERVICES**

## Council Meetings

**Agendas and Minutes for Council meetings can be viewed on the Council's website at [www.tasman.govt.nz](http://www.tasman.govt.nz)**

### Golden Bay Community Board

Takaka Fire Station, Motupipi Street, Takaka,  
Tuesday 10 November 2015, 9.00 am. Public forum

### Motueka Community Board Open Forum

Motueka Office, 7 Hickmott Place, Motueka,  
Tuesday 10 November 2015, 6.00 pm

### Environment and Planning Committee

Tasman Council Chambers, 189 Queen Street, Richmond,  
Thursday 19 November 2015, 9.30 am. Public forum

### Audit Subcommittee

Tasman Council Chambers, 189 Queen Street, Richmond,  
Thursday 19 November 2015, 1.30 pm or at conclusion of  
Environment and Planning Committee. No public forum

### Joint Shareholders Committee

Nelson City Council, Trafalgar Street, Nelson,  
Friday 20 November 2015, 1.30 pm. No public forum

### 24 Hour Assistance – Phone your local Service Centre

Richmond 03 543 8400

Murchison 03 523 1013

Motueka 03 528 2022

Takaka 03 525 0020



Newsline is produced by HotHouse Communications for Tasman District Council and is printed by Printhouse on recycled/recyclable paper. For advertising and editorial enquiries please contact HotHouse on phone 03 545 7995 or Email: [newsline@hothouse.co.nz](mailto:newsline@hothouse.co.nz)

## GREENWASTE COLLECTION



- Just \$65 for 6 months, \$120 for 12 months or \$100 with any other 12 month Betta-Bins rental service.
- Betta Greenwaste Bins are large 240 litre bins collected fortnightly.

**Betta for your pocket  
and Betta for the  
environment**

**0800 635 622  
[bettabins.co.nz](http://bettabins.co.nz)**

**Betta-Bins**

# STOP

## THE STARTLE

SHARED PATHWAYS | USERS TIPS




Our region has several shared pathways designed to provide people who are walking and cycling with a safe, motor vehicle-free environment. People have reported they are sometimes startled by other users when using shared pathways. Here are some ways you can help "Stop the Startle".


- 

**Keep left**  
Keep to the left of the path at all times whether you are walking, running, cycling, scooting or skating. When passing others let them know you're there, give them a wide berth, ensure you have enough space to complete the pass and return to the left.
- 

**Control your dog**  
Owners, please keep your dog under control around other people (or dogs).
- 

**Move off the path when you stop**  
If you meet a friend on your journey, or want to stop to enjoy the view or have a breather, please move off the path.
- 

**Control your speed**  
Ensure that other people's safety is never compromised by the speed you are travelling. Cyclists who want/need to go fast are advised to ride on the road. Electric mobility scooter drivers should keep their speed moderate and alert pedestrians as they approach.
- 

**Warn when approaching – be considerate**  
Be seen – 'leave your invisibility cloak at home'. It is essential that faster moving path users, such as cyclists and rollerbladers, warn pedestrians before overtaking them. Calling out "hello" or "passing" or ringing a bell will alert slower path users they are about to be overtaken. Being startled by faster path users is one of the key issues affecting people's enjoyment of our shared paths.
- 

**Don't block the pathways – they are not car parks**  
Drivers are asked not to park on pathways. Having to go round a parked car can create a hazard and, of course, path parkers can be fined or towed.



ASTRO BIO SPREADING SEPCLEAN SEPTIC TANKS

**SEPTIC TANKS • BULK COLLECTION  
GREASE TRAPS • SUMPS**

Introducing our region's largest liquid waste company - organised, ethical and local - keeping our homes, businesses and public places clean and safe.



**NELSON MARLBOROUGH WASTE**

FREEPHONE 0800 725 326  
www.nmwaste.co.nz • sales@nmwaste.co.nz

89441 HotHouse Communications