

Keeping you informed about news and events in Tasman District



Takaka Valley

Queen Street works to begin 2017 **P.3**

Candidates urged to come forward **P.5**

Golden Bay Museum's Whalery **P.8**

Car park upgrades planned for Takaka and Brightwater

Takaka's Motupipi Street Car Park and Brightwater's Village Green Car Park will be upgraded and sealed by the end of the year to help meet summer parking demand.

We have set aside \$130,000 for the Motupipi Street car park upgrade and extension to help reduce the pressure on parking in Takaka over the peak visitor season.

The upgrade will see old concrete footings and floor slabs (still in place from demolished buildings) removed, and the gravel portion of the car park sealed. The parking layout will be redesigned, and the total number of parks will double, from about 45 to close to 90.

In Brightwater, the partially-sealed Village Green Car Park will also be upgraded. The gravel overflow parking area will be sealed and drainage issues (which currently prevent cars parking here when there has been heavy rain) resolved.

This should reduce some of the on-street parking pressure in front of the shops on Ellis Street.

The work is expected to be complete by December 2016.



Motupipi Street Carpark, Takaka

Mayor's Message

Many of you will be aware that the 2016 Local Body Elections will be held later this year. We'd really like to see a great representation of our community putting themselves forward as candidates for the Council and Community Boards. This includes a range of ages and backgrounds of both male and female candidates. It really is vital for us to have representation from a balanced cross section of our community.

Being a member of our Council, Community Board or Residents Association is a great way for you to be involved in the development of our community. It requires a commitment to listen to and engage with your community.

If you are considering standing or you would like to know more about the elections process, I would encourage you to contact the Council's Elections Officer, Sandra Hartley at sandra.hartley@tasman.govt.nz or 03 543 8554.

You can read more about standing for Council in this edition of Newline. You can also visit the Local Government New Zealand website <http://www.lgnz.co.nz/vote2016>.

Mayor Richard Kempthorne



Waimea Inlet community planting day

Battle for the Banded Rail is a Waimea Inlet Forum project working with local communities and supported by Tasman District Council and Department of Conservation. It aims to increase the number of banded rail and other estuarine birds on the Waimea Inlet by restoring habitat and trapping predators.

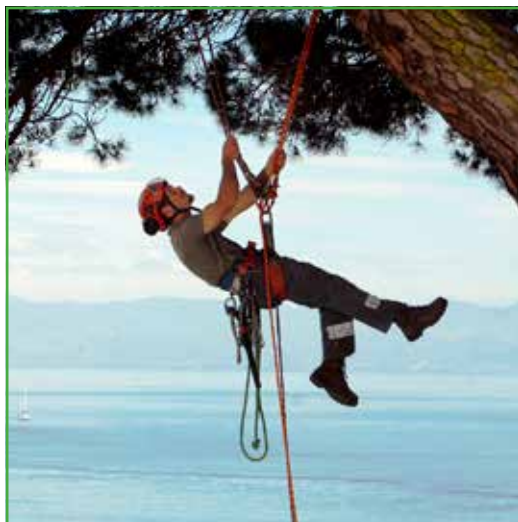
Sunday 12 June, 9.00 am – 1.00 pm, North Bronte Peninsula (meet 19 Cardno Way off Bronte Road East)

Sunday 26 June, 9.00 am – 1.00 pm, Research Orchard Road

Please bring gloves, spade and drinking water. Wear solid footwear and clothes suitable for the weather conditions. Coffee (courtesy of Pomeroy's) and tea will be provided.



For more information email us at bandedrail@gmail.com or phone Kathryn 544 4537.



TASMAN'S TOP TREE TEAM

Nelmac Tree Care is #1 in the top of the south.

Call us for a free quote for: canopy reduction, tree removal, pruning, hedges & all tree work.

0800 635 622





Major Queen Street works to begin in 2017

Detailed design and an updated construction timetable for major underground pipe upgrades and the total replacement of the surface of Richmond's Queen Street have been confirmed.

Minor works, including the replacement of a water main, will take place in October and November this year. This will signal the start of the \$9.5 million project to reduce the risk of flooding in severe rain storms and replace the street surface with a safer, more pedestrian-focused design.

Extensive roadworks will begin in February 2017.

Tasman District Council Engineering Services Committee chairman Trevor Norriss said while it was originally envisaged the work would begin in August 2016, delaying the most disruptive roadworks until 2017 would reduce the cost and disruption of requiring a contractor to pack up and then re-establish before and after the holiday period.

"We had planned to begin the works, then shut down over summer when retailers are at their busiest. After discussions with businesses and landowners on Queen Street, we have decided it makes more sense to give the contractor a clear run at the major construction works in 2017," Cr Norriss said.

"The project is going to take most of 2017 to complete and there is going to be disruption to traffic, to businesses and the general public. We can't avoid that – this is a much-needed upgrade that will significantly reduce the risk of flooding for properties along Queen Street, and businesses along there will remember the record floods we experienced in 2011 and 2013.

"In saying that, we will be working extremely hard to keep everyone informed of what is happening, and trying to minimise the disruption as much as possible."

Cr Norriss said detailed design for the reinstated street was largely complete. Wide footpaths and a smooth continuous surface would make the street a pedestrian-friendly, accessible space and contribute to slow traffic speeds.

DETAILED ASPECTS OF THE DESIGN INCLUDE:

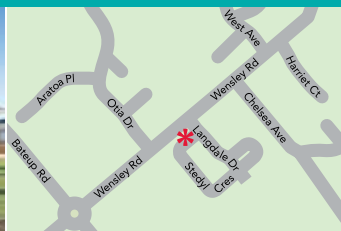
- Zebra crossings at the Richmond Mall entrance, Sundial Square and Richmond Library
- Bus stops/shelters on Queen Street outside the Richmond Mall entrance, Noel Leeming/Arthur Wakefield Hotel, and outside the Council
- Drinking water fountains outside the Richmond Library and Pat's Plaza, in addition to the existing fountain in Sundial Square
- Planting of 35-40 ornamental pear and titoki trees
- Upgraded LED street lighting
- Four modern interpretation boards
- Cycle and scooter stands
- New seating of similar design to the benches in Sundial Square.

"The detailed design to this point has focused on the elements that affect underground services," Cr Norriss said. "Over the next few months we will also be looking at confirming elements that don't impact on the pipe replacements, such as public art, other types of seating and wayfinding signs to add colour and vibrancy."

SHOWHOME EXTRAVAGANZA



* 2 Stedyl Crescent, Richmond



* SHOWHOMES

2 & 4 Stedyl Crescent
Richmond
OPEN Monday to Friday
11.00am–4.00pm
Saturday & Sunday
1.00pm–4.00pm



* 4 Stedyl Crescent, Richmond

G.J. Gardner Homes are acknowledged for their innovative design concepts. Our designers are continually coming up with fresh ideas and creative living plans. Here's your chance to view some of their latest ideas incorporated into a stunning new designer showhomes. Design innovation is just one more reason why more people build with G.J. Gardner Homes every year than any other builder.

Phone 03 543 9502
0800 42 45 46 www.gjgardner.co.nz

NELSON OFFICE 195 Queen Street, Richmond
OPEN Monday to Friday 8.00am–5.00pm

G.J. Gardner. HOMES

Q. Why did the fish climb the ladder?

A. TO GET TO THE TOP.

Native fish species use the Reservoir Creek fish ladder in Richmond to migrate, helping them get to where they need to go for breeding, feeding and to complete their life cycles.

More than 100 people turned out to help us celebrate World Fish Migration Day on 21 May at the fish pass, learning more about what our finned friends need to flourish.

Families with their children and interested members of the public came for a morning of talks, demonstrations and games hosted by Tasman Mayor Richard Kempthorne, Council staff as well as representatives of Keep Richmond Beautiful. Richmond Scouts kept hungry fish watchers fed with a fundraising barbecue.

Resource scientist Trevor James said the day was a wonderful opportunity to spread the word about how manmade in-stream structures such as weirs, culverts, dams and so on put native fish species at risk.

"We were also able to show how some of the work Council engineers and scientists do has helped restore a path for fish – the Reservoir Creek fish pass is one of 300 structures we have remediated over the past 12 years."

Another fish pass can be found at Reservoir Creek below Templemore Pond. There are now about 3000 whitebait (mostly inanga) in the 800-metre section of creek. These 3000 fish lay about 4 million eggs, from which 2% (8000) return from the sea as whitebait.

"If the 55 kilometres of small creeks in the Waimea Inlet were all accessible to fish, that would equate to about 600,000 whitebait returning from the sea – or 3000 patties," explains Trevor. "This shows the importance of looking after the habitat and migration of fish in small creeks."

You can help too. If you have a property with a driveway or farm track crossing a stream, chances are there is a culvert under it. If the culvert pipe is undercut and overhanging, phone the Council and we will come out and fix it at no cost.

World Fish Migration Day is a global initiative. The Richmond event was the official launch of this year's activities.



New recycling calendars on their way

Keep an eye out for updated recycling calendars coming your way – these will be delivered to you shortly. There will also be copies available at Council service centres, libraries and some local petrol stations and stores.

It's nearly a year since we implemented the new kerbside recycling service, and Tasman households are on track to have recycled about 3200 tonnes of materials over the year. That means recycling volumes are up 22% – or an extra 12 kilograms of recycling per person!

Thank you for taking the time and effort to recycle, and for working with us as we introduced the new system.

IS YOUR WATER SAFE?

**Get the BEST from your water!
Take the WORST out of it!**

- Water Purification
- Filtration
- UV Sterilisers
- Giarda Filters
- Water Softening

WATER TESTING SERVICE AVAILABLE.



thinkwater
TASMAN BAY
BEYOND IRRIGATION

**397 HIGH STREET MOTUEKA.
PHONE: 03 528 8888**



The specialists in design, supply and installation of domestic & horticultural irrigation, drainage, effluent & septic systems, pumps, water harvesting & tanks and water treatment & filtration.

Council candidates urged to come forward early

Local Government New Zealand (LGNZ) is encouraging passionate leaders to get ahead of the game and start thinking about running for their upcoming local council elections now.

“Standing for local council is an incredible opportunity for people to have their say about the issues that affect their community directly and develop their leadership skills,” said LGNZ Chief Executive, Malcolm Alexander.

“While candidate nominations open from 15 July 2016, we want potential candidates to start thinking about their future in local government now, so they have all the support and information they need ahead of the election,” he said.

Mr Alexander said ensuring elected representatives had the abilities, diversity of skills and training to respond to major community issues was an important part of a successful election process.

“Providing communities with a choice of candidates that they feel confident will make the best decisions for their area is vital. We also hope that a pool of competent and passionate candidates will drive even more citizens to vote this year.”

LGNZ recently announced the launch of Vote2016 campaign, which aims to lift nationwide voter turnout in local elections to more than 50 per cent – a first since the 1980s.

Local Elections 2016

YOUR VOTE YOUR COMMUNITY

People interested in finding out more about standing as a Tasman District Council election candidate are encouraged to contact electoral officer Sandra Hartley, Email: sandra.hartley@tasman.govt.nz, or visit Vote2016.co.nz

Women in Local Governance – information evening



National Council of Women Nelson Branch invite women considering standing for election to:

- Nelson Marlborough District Health Board
- Nelson City Council
- Tasman District Council

To an information evening:

Tuesday 7 June, 7.30pm – Constance Barnicoat Meeting Room, Richmond Library, Queen Street, Richmond.

Wednesday 8 June, 7.30pm – Nightingale Library, Meeting Room, Tahunanui.

Current & past NMDHB and Council members will share information and answer questions.

SURVEYING & RESOURCE MANAGEMENT

- Project Management
- Resource Consents & Planning
- Subdivision Design & Management
- Land Development Engineering


STAIG & SMITH LTD
ENHANCING THE LAND

81 Selwyn Place, Nelson • Ph 03 548 4422 • www.staigsmith.co.nz




FLETCHER VAUTIER MOORE
LAWYERS

Providing legal advice on property and business matters

Jo Bruning
Legal Executive
jbruning@fvm.co.nz

Zoe Bond
Senior Solicitor
zbond@fvm.co.nz

265A Queen Street, Richmond Ph: (03) 543 8301

PUBLIC NOTICES

Apply for a Community Grant online

Are you planning a great community event or project – but need a little help to make it happen? We may be able to help.

Applications for our Community Grants are open, and there is funding available for Tasman-based projects that meet a community need, join communities together and have community support. Priority is given to projects that can show financial support from other sources as well.

We're moving to a simplified, online-only application form this year.

To help you get started, we will be running sessions at our local libraries to show you how to fill in the online form. Details of these will be posted on our website and publicised in future editions of Newsline.

Applications close on 31 July 2016.

Grants are available for projects that fit into the following categories:

- Arts/culture/heritage/museums
- Festivals and events
- Youth and children
- Social services
- Environment
- Emergency services
- Sports and recreation facilities.

Apply online:

Visit tasman.govt.nz/link/grants to fill in the online application form.

For more information:

Visit our website, tasman.govt.nz/link/grants or email Community Partnerships Coordinator Mike Tasman-Jones, mike.tasman-jones@tasman.govt.nz.

Rates rebate

You may qualify for a refund of a portion of your rates. You have until 30 June 2016 to apply for a rebate for the 2015/2016 rating year.

You will have automatically received a rates rebate application form and guide if you have received a rates rebate in the past. These were sent in mid to late August 2015. You need to pay your rates account as usual. We will credit the rates rebate amount to your rates account and notify you once your application has been processed.

For more information go to www.tasman.govt.nz/link/rates-rebate

Affordable Professional Funerals

We can provide every service and option, and leave you with memories of a lifetime of love.

03 544 4400 • www.wrfs.co.nz



**WAIMEA RICHMOND
FUNERAL SERVICES**

PUBLIC NOTICES

Have a say on Moturoa/Rabbit Island proposals

Consultation is now open on a draft reserve management plan to guide Moturoa/Rabbit Island for the next decade.

Over the summer of 2015/2016, 660 individuals and groups let us know what they love about Moturoa/Rabbit, Rough and Bird islands, what they think should change and what should stay the same. That feedback was used to develop the Draft Moturoa/Rabbit Island Reserve Management Plan.

That's not the end of the process though – we still want to know if you think we've got it right. There are 12 key proposals we're seeking specific feedback on, but you're welcome to comment on any part of the draft plan.

Have a say

You can read the full draft plan and make a submission by visiting our website, tasman.govt.nz/feedback, or in hard copy at Council service centres and libraries.

Submissions close on Friday 8 July.

Rating Information Database

Tasman District Council's Rating Information Database is available for inspection (without fee) at Council offices during normal opening hours.

The database provides the rates for the current year (2015/16) and those proposed for the next. Go to tasman.govt.nz then enter the property street address to view the current year's rating information and then click on "Next Year – 2016/17" to see next year's.

While the Rating Information Database contains a record of all information required for the setting and assessing of rates, the information will not include any subdivisions/boundary adjustments/amalgamations that were completed after 6 May 2015.

Please note legislation does not allow the names of owners and ratepayers in the Rating Information Database.

Notice given under Local Government (Rating) Act 2002.

RESOURCE CONSENTS

The Council has received applications for resource consent, which have been publicly notified in The Nelson Mail. The applications and supporting information may be examined in any Council service centres. The full public notice may be found online at Council's website (www.tasman.govt.nz). Any person may make a submission on the applications in accordance with Section 96 of the Resource Management Act 1991. Submission forms are available from Council service centres and on Council's website. Please note this is an abridged advisory notice only.

Applicant: Greenways (2010) Limited (P & R Windle)

Location: Glenview Road, Takaka

Consent Type, Application Number and Proposal:

Subdivision Consent (Application RM160469)

To subdivide Rural 1 zoned land into 25 residential allotments with Roads 1 and 2 to vest with the Council. The application proposes to provide only one footpath on proposed Roads 1 and 2, and to reduce the width of Right of way A; these are reductions in the standards specified within the Tasman Resource Management Plan.

Land Use Consent (Application RM160387)

Construction of a dwelling on each of Lots 1-25 on land zoned Rural 1.

Submissions due: 4.30 pm on Friday 27 June 2016.

COMMUNITY NOTICES

Richmond Unlimited – Annual General Meeting

Tuesday 14 June 2016, 5.30 pm, Richmond Town Hall, Richmond.

Richmond & Districts Information Centre

With the busy tourist season still with us, and winter on the way, more volunteers are urgently required to work three hour shifts on a weekly or fortnightly basis at the Information Centre in Gladstone Road. Initially successful applicants would be required to work with more experienced volunteers before being asked to work on their own. Although applicants should preferably have a good knowledge of the local community, this is not necessary, as the Centre has a large database. They should be well presented and enjoy meeting and conversing with visitors from all over New Zealand and the world. The Centre is well appointed with good facilities. If you are interested in this type of work, call in to the Centre or Ph. 03 543 9521 or contact Sally Symonds, Ph. 03 542 3983 (rosters) for further details.

Aquatic Centre wave pool closed for maintenance

The wave pool at the Richmond Aquatic Centre has been emptied and is currently closed for maintenance.

We're expecting the wave pool to be back in action in mid-June. In the meantime, the Aquatic Centre's other pools, the sauna, gym, café and other facilities are all still open seven days a week.

More information on the pool's opening hours and facilities can be found at clmz.co.nz/Richmond.

Second Hand Sunday returns

Clear out some clutter or grab a treasure or two when Second Hand Sunday returns on 12 June 2016, starting at 10.00 am.

It's easy to participate

To offer items, complete the registration form online by 9.00 am on Thursday 9 June 2016. This form can be found at www.tasman.govt.nz [search phrase = second hand sunday]. You can also register at any Council service centre.

On the day, put your items out on your driveway or front lawn and attach the downloadable poster (also available at Council service centres) to your letterbox so people can easily identify your address. Please remove any uncollected items at the end of the day.

For treasure-hunters, the final list of addresses for those offering free stuff will be available on our website by midday Friday 10 June.

Keep up with the Tasman District Council Lowdown

Hear news items from the Council about current public consultations, Council and community projects, topical interviews, plus a range of notices about activities and events in the Tasman District.

Tune in to Fresh FM on Monday 11.40 am or Wednesday 3.40 pm. Nelson-Tasman 104.8, Golden Bay 95.0.

ROADING

Proposed Road Closures

The following roads are proposed to be closed to ordinary vehicles for the periods and times indicated below. Objections can be lodged at: Tasman District Council, 189 Queen Street, Richmond:

Department of Conservation, Motueka – Aerial application of 1080

- Totaranui Road (from Pigeon Saddle to Totaranui)
- Awaroa Road (from Totaranui Road to Awaroa Inlet)
- Cobb Dam Road (from the Cobb hydro power station to the Cobb Reservoir)
- Wangapeka River Road (from Rolling Junction campsite to Courthouse Flat)

Friday 1 July 2016, 7.00 am to 2.00 pm (this date is weather dependant and could be carried out at later date if necessary).

Objections Close: Friday 3 June 2016.

COUNCIL MEETINGS

Agendas and Minutes for Council meetings can be viewed on our website at www.tasman.govt.nz

Environment and Planning Committee

Tasman Council Chambers, 189 Queen Street, Richmond, Thursday 9 June 2016, 9.30 am. Public forum

Full Council

Tasman Council Chambers, 189 Queen Street, Richmond, Thursday 9 June 2016, 1.30 pm or at the conclusion of Environment and Planning Committee. No public forum

Extraordinary Hearing Panel Meeting (Deliberations) – Motueka Top Ten Holiday Park Lease

Heaphy Room, Tasman District Council, 189 Queen Street, Richmond, Thursday 9 June 2016, 3.30pm or at the conclusion of Full Council. No public forum

Golden Bay Community Board

Collingwood Fire Station, Elizabeth Street, Tuesday 14 June 2016, 9.00 am. Public forum

Motueka Community Board

Motueka Service Centre, 7 Hickmott Place, Motueka, Tuesday 14 June 2016, 4.00 pm. Public forum

Corporate Services Committee

Tasman Council Chambers, 189 Queen Street, Richmond, Thursday 23 June 2016, 9.30 am. Public forum

24 Hour Assistance – Phone your local office

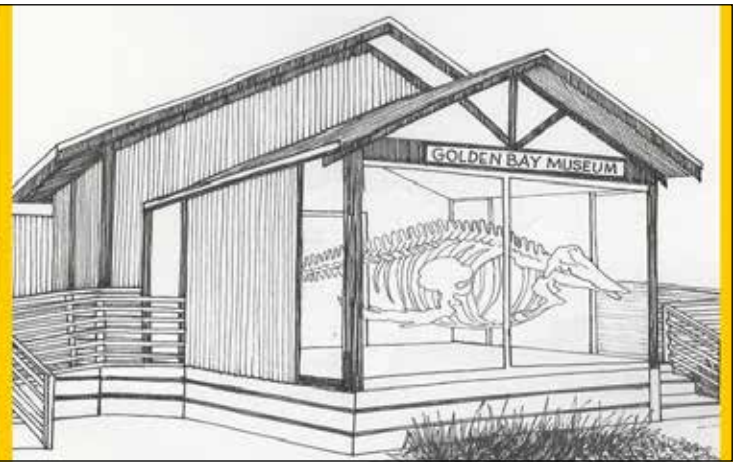
Richmond 03 543 8400

Murchison 03 523 1013

Motueka 03 528 2022

Takaka 03 525 0020

Newsline is produced by HotHouse Communications for Tasman District Council and is printed by Printhouse on recycled/recyclable paper. For advertising and editorial enquiries please contact HotHouse on phone 03 545 7995 or Email: newsline@hthouse.co.nz



Construction to begin on Golden Bay Museum's Whalery

Construction of the Golden Bay Museum's Whalery extension is set to begin, allowing the museum to tell the story of Golden Bay/Mohua's fascinating marine environment and explore the mystery of mass whale strandings at Farewell Spit.

A local Takaka builder has been contracted to do the work, and the building should be completed by the end of the year.

In a huge effort, the Museum Society has nearly reached its \$120,000 fundraising target. The Council, which owns the museum land and building, will manage the building project on the museum's behalf.

To find out more about the project or to donate, visit the museum website: goldenbaymuseum.org.nz.

Work to replace water meters continues

Work to replace 2000 ageing domestic water meters across the District this year is approaching the halfway point.

By the end of June, our contractor Fulton Hogan will have replaced more than 900 meters in Richmond and Motueka. The new manifold meters are easier to read, last longer, and cost less to replace.

There are several hundred meters still to be replaced in Motueka, before work moves on to Kaiteriteri and Riwaka in July.

We do need to turn off the water supply to replace the meters. This will be for a period between the hours of 9.00 am and 3.00 pm. If your meter is due to be replaced or if you are affected by a water shutdown, you will receive a letter before any work is done. The letter will include details on the timing, what's involved, and who to contact if you have any questions.

You can find out more on our website (search term "water meter renewals"), tasman.govt.nz



ASTRO **SEPCLEAN**
BIO SPREADING SEPTIC TANKS

**SEPTIC TANKS • BULK COLLECTION
GREASE TRAPS • SUMPS**

Introducing our region's largest liquid waste company - organised, ethical and local - keeping our homes, businesses and public places clean and safe.



FREEPHONE 0800 725 326
www.nmwaste.co.nz • sales@nmwaste.co.nz