

Newsline



Keeping you informed about news and events in Tasman District



Wainui Falls

SmartWeek comes to Richmond **P.2**

'Sentinel' launched at Port Motueka **P.6**

Info for prospective Council candidates **P.11**

New recycling calendar inside

On 29 June 2016 it will be one year since your new kerbside recycling service was implemented. That means it's time to update your collection calendar. Your new collection timetable is inside this issue of Newsline – see page 7. Cut it out and pop it on your fridge or noticeboard.

You can also download a copy from our website, www.tasman.govt.nz/recycling, or pick one up from a Council Service Centre or library.

As we reported in the last issue of Newsline, Tasman households are on track to have recycled about 3200 tonnes of materials over the past year – an extra 12 kilograms per person – to record a 22% increase in recycling volumes.

That's a fantastic effort and makes a significant difference to the amount of waste going to landfill.

Recently, our collection trucks have experienced some difficulty in collecting bins placed too close together recently, so please remember to space your bins at least half a metre away from each other and any other objects to give the trucks' mechanical arm enough room to pick them up. The front of the bins should face the road (wheels at the back) and be placed close to the kerb.

FIND OUT MORE:

Everything you need to know about kerbside recycling, including what you can and can't put in your bins, can be found on our website, www.tasman.govt.nz/recycling.



Mayor's Message

I was reminded recently that, although they might look fantastic, leaves on deciduous trees cause some serious issues at this time of year.

Leaves left on footpaths or in the gutters in urban areas block the drains, which can quickly lead to flooding particularly in times of heavy rain. They can also cause footpaths to be slippery and a risk for causing a fall.

Council contracts a road sweeper in all urban areas where there are footpaths and stormwater drains a minimum of four times a year, with additional monthly sweeps in the Richmond and Motueka town centres. With the number of trees in our District though, it is not possible to keep up with leaf fall at this time of year. Additional sweeps would cost more, which we as a Council are trying to avoid in order to keep rates increases as low as possible.

I think it's a good idea for each of us to maintain the road frontage and keep stormwater grates clear in our neighbourhood. We can help each other out by clearing fallen leaves from trees on or around our property to prevent these from blocking drains. With the heavy rainfall we've had recently it's even more important to keep on top of this. I try to sweep the leaves from the road frontage in our neighbourhood and I'm sure many of you do the same. A good way to dispose of collected leaves is on the garden as a way to suppress weeds or use them for composting.

Mayor Richard Kempthorne



SmartWeek comes to Richmond

Do you feel like you need to get to grips with digital technology but don't know where to start? Whether you're a small business grappling with the cloud, or you'd like to know how to make the most of your smart device, SmartWeek has a range of workshops to help.

Sponsored by the Tasman District Council and Richmond Unlimited, SmartWeek runs from 27 June to 2 July 2016 at the Richmond Library. We're offering free beginners workshops for business and community to help you go digital – everything from e-commerce and website design through to internet banking and ancestry research.

Regional Digital Coordinator Karen Lee says: "SmartWeek is planned as an easy to understand programme of workshops to give people ideas, answer questions and show them where to go next. If it's successful in Richmond then we'll roll it out in other areas – it's all

about local people helping local people."

SmartWeek is part of the new digital action plan supported by Tasman District and Nelson City councils, as well as the Nelson Regional Economic Development Agency, the Nelson Tasman Chamber of Commerce and other organisations.

The full SmartWeek programme can be found at wearedigital.nz/smartweek, and more information is available from karen@eda.co.nz.



TASMAN'S TOP TREE TEAM

Nelmac Tree Care is #1 in the top of the south.

Call us for a free quote for: canopy reduction, tree removal, pruning, hedges & all tree work.

0800 635 622



Children get their hands dirty for Arbor Day

Students from about 20 Tasman schools, along with green-thumbed community groups, will plant more than 25,000 trees this month as part of Arbor Day celebrations for 2016.

Some schools will plant fruit and nut trees on their own grounds, while others will join in with community plantings. Students from some schools have worked over several years to plant nearby areas. Areas that have been adopted by schools include Tane's Ark at Aranui Park in Mapua, York Park in Motueka and Faulkners Bush in Wakefield. We will provide more than 25,000 trees this year for planting in reserves and community spaces throughout the District. These plants will grow to provide food, healthy habitats for wildlife and great places for people to recreate and enjoy.

GET INVOLVED:

Everyone is welcome to take part in a community planting day on the Waimea Inlet organised by Battle for the Banded Rail.

Sunday 26 June, 9.00am – 1.00pm, Research Orchard Road

Please bring gloves, spade and drinking water. Wear solid footwear and clothes suitable for the weather conditions. Coffee (courtesy of Pomeroy's) and tea will be provided.

Battle for the Banded Rail is a Waimea Inlet Forum project working with local communities and supported by Tasman District Council and Department of Conservation. It aims to increase the number of banded rail and other estuarine birds on the Waimea Inlet by restoring habitat and trapping predators.



For more information, email bandedrail@gmail.com or phone Kathryn on 03 544 4537.

Register your dog by 30 June

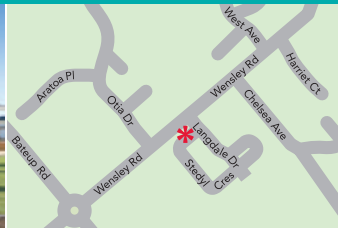
A friendly reminder that your dog must be registered by 30 June. All dog owners currently on our database should receive a reminder letter. To avoid a penalty fee we must receive payment by 31 July 2016.

For more information on ways to pay and to download a dog registration form, head to tasman.govt.nz (search term "dog registration").

SHOWHOME EXTRAVAGANZA



* 2 Stedyl Crescent, Richmond



* SHOWHOMES

2 & 4 Stedyl Crescent
Richmond
OPEN Monday to Friday
11.00am–4.00pm
Saturday & Sunday
1.00pm–4.00pm



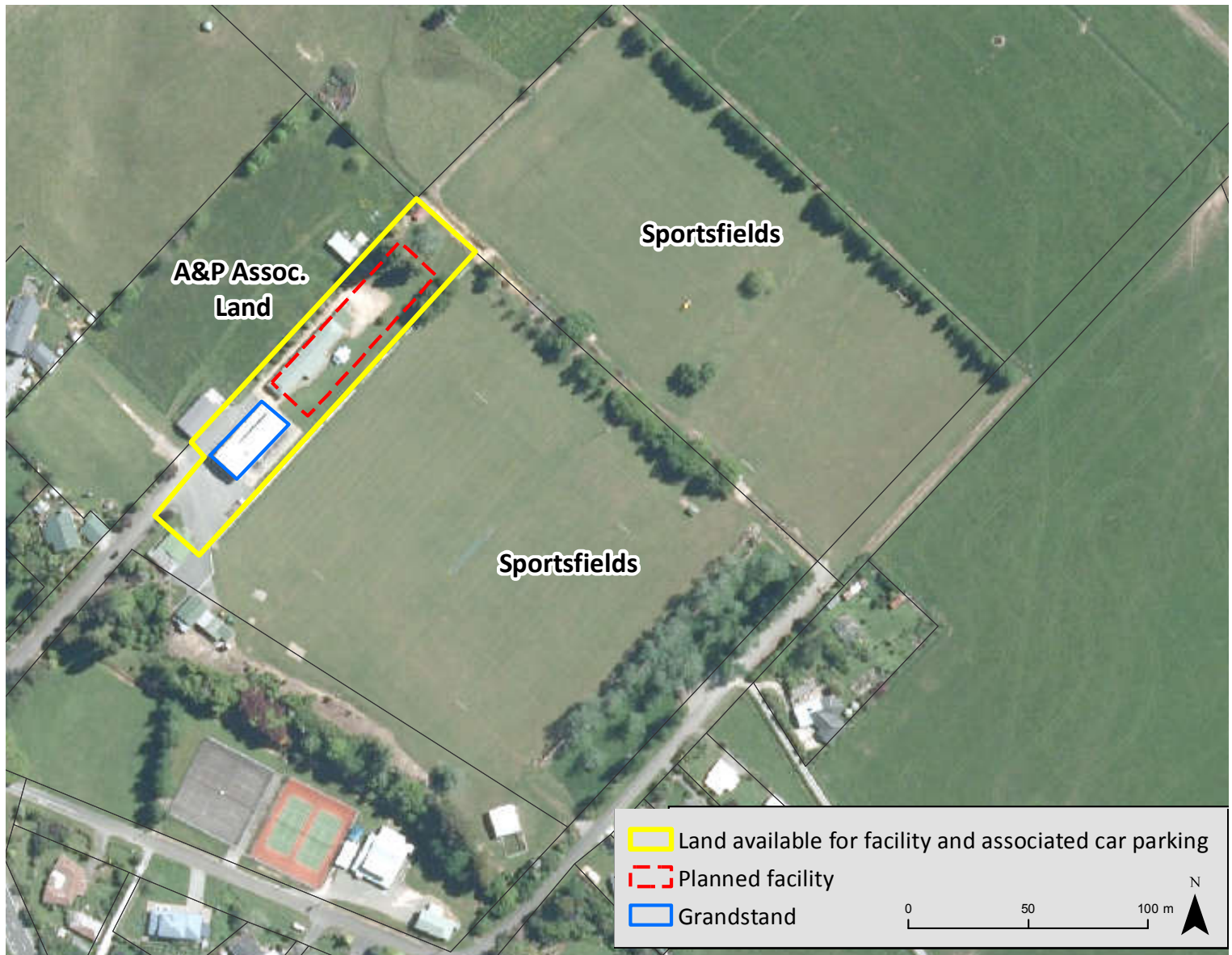
* 4 Stedyl Crescent, Richmond

G.J. Gardner Homes are acknowledged for their innovative design concepts. Our designers are continually coming up with fresh ideas and creative living plans. Here's your chance to view some of their latest ideas incorporated into a stunning new designer showhomes. Design innovation is just one more reason why more people build with G.J. Gardner Homes every year than any other builder.

Phone 03 543 9502
0800 42 45 46 www.gjgardner.co.nz

NELSON OFFICE 195 Queen Street, Richmond
OPEN Monday to Friday 8.00am–5.00pm

G.J. Gardner. HOMES



Golden Bay Community Recreation Facility update

Construction work on Golden Bay's new recreation facility is continuing, with the new building expected to be open for public use in December 2016.

Work to in-fill the soft spot found on the recreation facility site is complete and the foundations for the building are currently underway. Aided by the fact Auckland University's Professor Paul Williams has now read all the geotechnical reports and accepted there is no evidence the soft spot on the site of the new facility was a sinkhole. This confirms our experts' assessment that it is an infilled pond that can be safely backfilled to provide a sound base for the new building. The grandstand on the site will be removed at the end of the 2016 rugby season, subject to approval by Heritage New Zealand, to create space for the car parking needed to comply with the conditions of the facility's building consent.

WHY REMOVE THE GRANDSTAND?

Since 2013, the plans for the new community recreation facility have included the removal of the grandstand.

Over the past few months, there has been a movement to keep the grandstand. We are aware of the arguments for retaining it, but there are numerous reasons this would be impractical – particularly at this stage, when the plans have been finalised, a contract awarded and construction is underway.

Some of the reasons for removing the grandstand include:

- **Car parking:** About 30 car parks, including four disability parks, would need to be provided elsewhere if the grandstand stays, in addition to parking needed for the grandstand itself. Providing this parking elsewhere is likely to cost more, may require the purchase of additional land, and will be further away from the recreation facility – this is not an option for disability parking which needs to be close to the facility and on flat land.
- **Design and aesthetics:** The function room in the new facility would be partially hidden by the grandstand and would look out onto the grandstand's side wall – affecting the amount of light in the function room and its attractiveness for use. There would be no continuity of design between the two.
- **Access and public safety:** Most people would have to walk from the car park behind the grandstand to get to the new facility.

Continued over

Golden Bay Community Recreation Facility update (continued)

- **Fire rating and power supply:** Due to the closeness of the grandstand to the new facility, the function room wall is likely to need fire rating. The power supply to the site is nearing capacity and would need to be upgraded if the grandstand was retained.
- **Seismic risk:** The grandstand has been assessed at 31% of new building standards and would need to undergo a detailed seismic assessment and possible strengthening if it was retained.
- **Ongoing maintenance costs:** to maintain the current grandstand.
- **Usage conflicts:** If the clubroom and other facilities in the grandstand were retained these could compete for users with the new facility, affecting its income and viability.
- **Driveway construction:** The floor levels of the grandstand and new facility are different, creating difficulty for construction of the driveway that would run the length of both buildings.

It's true that some of these issues could be resolved if there was time and funding to do so. However, it is not possible to overcome them within the existing project budget or timeframe, which would see the facility open in time for the A&P Show in January 2017.

Because the grandstand may have been built before 1900, we are required to apply for authority from Heritage New Zealand prior to removing it. We have begun that process.

THE CONSULTATION PROCESS

In partnership with the Golden Bay Shared Recreation Facility group (GBSRF), which is made up of park users, we have been actively planning for the new facility since 2010.

Since 2013, plans for the new building have all shown the grandstand being removed. The public consultation carried out since then and information on the project includes:

- **February 2014:** User group and public meetings about the plans for the proposed facility. The plans showed the grandstand being removed. Of 149 written comments received, none mentioned the removal of the grandstand.
- **13 November 2015:** Two-page ad in the GB Weekly showing the concept plans, with car parking where the grandstand sits.
- **2012, 2013, 2014, 2015 and 2016:** Information stand at the A&P Show displaying the site plans, with no grandstand.

This is in addition to public meetings, Long Term Plan and Annual Plan consultations dating back to 2009.

Make a submission on draft plan for Moturoa/Rabbit Island

Consultation on proposals for the future of Moturoa/Rabbit Island is open for another three weeks – we'd love to hear your thoughts.

There are 12 key proposals we're seeking specific feedback on, but you're welcome to comment on any part of the Draft Moturoa/Rabbit Island Reserve Management Plan.

One aspect of the plan that has generated some media attention is the proposal to restrict public access to the forestry plantation area and change the layout of the publicly-accessible cycling/walking trails on Moturoa/Rabbit Island.

We'd like to make it clear there are no plans to change the current practice where groups can apply to the forest manager (PF Olsen) for a permit to hold an event within plantation forest areas. Groups who

apply in advance and gain a permit will be able to hold events in the same way they do now.

Some of the other key proposals include the development of a Grade 2 mountain bike park west of the existing track in Conifer Park, new tracks for horse riding, extra recreational amenities such as toilets, picnic tables, shade sails and so on, environmental restoration and plantings, and the possibility of closing the eastern half of Moturoa/Rabbit Island one or more times during winter to allow an organised game bird hunting event to take place.

HAVE A SAY

You can read the full draft plan and make a submission by visiting our website, tasman.govt.nz/feedback, or in hard copy at Council offices and libraries.

Submissions close on Friday 8 July.

Reduce your water meter readings and re-use that precious water

Re-use your household washing water to reduce your water charges and keep your garden lush and green.



- Install in your new home, or retro fit to your existing system
- Change-over valve to regulate quantity of water to garden
- Potential water reuse of over 40,000 Litres/person/year
- Complements a septic tank system - reduces the load
- Easy Installation
- Easy Maintenance
- Chemical Free
- No hidden costs

WaterMate
Grey-water Filtration System

Allflow
EQUIPMENT

Contact us today for a
free information package and
give your water a second chance!

58 Gladstone Road, Richmond

Phone 03 543 9057

sales@allflow.co.nz

www.allflow.co.nz

'Sentinel' launched at Port Motueka

The new Harbourmaster boat, Sentinel, was officially named and launched at Port Motueka on Monday 30 May 2016.

Harbourmaster Dan Cairney was joined at the launch by Tasman Mayor Richard Kempthorne and Mayoress Jane Kempthorne, Council staff, members of the public and the winners of the competition to name the Harbourmaster's Boat.

Reverend Andy Joseph performed a blessing, and Mayoress Jane observed custom by breaking a bottle of champagne against the hull to invite good luck.

Sentinel gives Dan greater ability to provide assistance and guidance to boaties thanks to its modern electronics, including a night-vision camera to aid night-time operations and search and rescue.

Dan says the boat's primary role is to help keep everyone safer on the water in Tasman.

"We now have what should be a much more capable and safer vessel, particularly for the night work that we are called upon to do."

Dan will be regularly out and about on the water in Sentinel, patrolling 238 kilometres of coastline – as well as the District's lakes and rivers – undertaking boating safety education and enforcement, attending maritime events and maintaining navigation aids.



Need help with your Community Grants form?

Online applications for this year's Community Grants are open now, and we're running drop-in sessions at libraries in July for anyone who needs a little help getting started.

Our staff will be on hand throughout to help you fill out and submit the online form on one of the computers provided.

You will need to bring all the information for your application, including details of your organisation (such as a Charities Commission number if you have one), the project you're applying for funding for, the community benefits it will bring and the budget.

DROP-IN SESSIONS:

All sessions run from 10.30 am to midday.

- Takaka Library, Tuesday 12 July
- Motueka Library, Wednesday 13 July
- Richmond Library, Thursday 14 July
- Murchison Library, Friday 15 July

FOR MORE INFORMATION:

Contact Community Partnerships Coordinator Mike Tasman-Jones on 03 543 8403, email mike.tasman-jones@tasman.govt.nz or head to our website, www.tasman.govt.nz/grants.

Winter Turf Service

John Deere L & D Series Ride-ons

- Change engine oil and filter
- Change fuel filter
- Change spark plug
- Check air cleaner
- Inspect belts and mower adjustments
- Check battery electrolyte levels and voltage
- Check lights
- Test operation of brakes, carburettor, transmission and safety systems
- Grease axles and mower spindles
- Sharpen blades
- Check mower deck level
- Check debris build-up under mower deck
- Steam clean (workshop only)

ONLY \$193.20 incl GST (\$168 + GST)
Please enquire about other models



Book your mower in today for genuine John Deere parts and service!



Ph: 03 543 8041
70 Gladstone Road,
Richmond



www.gordonhandy.co.nz

Your new recycling calendar

On 29 June 2016 it will be one year since your new kerbside recycling service was implemented. That means it's time to update your collection calendar. Cut it out and pop it on your fridge or noticeboard.

Which is my RECYCLING WEEK?



Cut here

- Rubbish bags are collected every week.
 - Recycling (glass and other recycling) are collected every two weeks.
 - Your collection day is printed on your new recycling bin*.
 - Place rubbish and recycling at the kerbside by 7.00 am.
- *See overleaf for an explanation of the bin sticker and where to find it.

- Week 1 collections
- Week 2 collections
- Changed collection days

July 2016							August 2016							September 2016						
m	t	w	t	f	s	s	m	t	w	t	f	s	s	m	t	w	t	f	s	s
				1	2	3	1	2	3	4	5	6	7				1	2	3	4
4	5	6	7	8	9	10	8	9	10	11	12	13	14	5	6	7	8	9	10	11
11	12	13	14	15	16	17	15	16	17	18	19	20	21	12	13	14	15	16	17	18
18	19	20	21	22	23	24	22	23	24	25	26	27	28	19	20	21	22	23	24	25
25	26	27	28	29	30	31	29	30	31					26	27	28	29	30		

October 2016							November 2016							December 2016						
m	t	w	t	f	s	s	m	t	w	t	f	s	s	m	t	w	t	f	s	s
					1	2		1	2	3	4	5	6				1	2	3	4
3	4	5	6	7	8	9	7	8	9	10	11	12	13	5	6	7	8	9	10	11
10	11	12	13	14	15	16	14	15	16	17	18	19	20	12	13	14	15	16	17	18
17	18	19	20	21	22	23	21	22	23	24	25	26	27	19	20	21	22	23	24	25
24	25	26	27	28	29	30	28	29	30					26	27	28	29	30	31	
31																				

January 2017							February 2017							March 2017							
m	t	w	t	f	s	s	m	t	w	t	f	s	s	m	t	w	t	f	s	s	
						1			1	2	3	4	5				1	2	3	4	5
2	3	4	5	6	7	8	6	7	8	9	10	11	12	6	7	8	9	10	11	12	
9	10	11	12	13	14	15	13	14	15	16	17	18	19	13	14	15	16	17	18	19	
16	17	18	19	20	21	22	20	21	22	23	24	25	26	20	21	22	23	24	25	26	
23	24	25	26	27	28	29	27	28						27	28	29	30	31			
30	31																				

April 2017							May 2017							June 2017						
m	t	w	t	f	s	s	m	t	w	t	f	s	s	m	t	w	t	f	s	s
					1	2	1	2	3	4	5	6	7				1	2	3	4
3	4	5	6	7	8	9	8	9	10	11	12	13	14	5	6	7	8	9	10	11
10	11	12	13	14*	15	16	15	16	17	18	19	20	21	12	13	14	15	16	17	18
17	18	19	20	21	22	23	22	23	24	25	26	27	28	19	20	21	22	23	24	25
24	25	26	27	28	29	30	29	30	31					26	27	28	29	30		

* Good Friday collections occur on Saturday 15 April

Your new recycling calendar

On 29 June 2016 it will be one year since your new kerbside recycling service was implemented. That means it's time to update your collection calendar. Cut it out and pop it on your fridge or noticeboard.

BIN PLACEMENT



Place bins at least half-a-metre away from other objects and close to the kerb.

This gives the truck's mechanical arm the room it needs to pick up the bin. If you have trouble measuring, use the bin width as a spacer. Make sure lids are closed and the front of the bin faces the road (wheels are at the back).

If possible, place away from cars and overhanging trees.

Cut here 

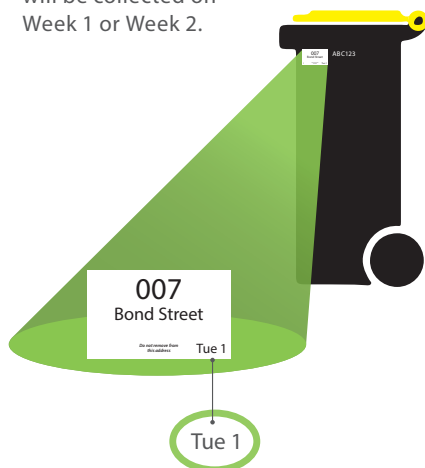
HOW DO I FIND OUT WHAT DAY MY BIN WILL BE EMPTIED?

Each recycling bin is assigned to a specific street address. The collection day is written on the sticker – this is the day of the week for both your rubbish and recycling collections.

Your rubbish will be collected every week.

Your recycling will be collected every two weeks.

The number after your day indicates whether your recycling will be collected on Week 1 or Week 2.



WHAT GOES IN YOUR RECYCLING BIN?

Recycling

- ✓ Clean plastic (No's 1-7)
- ✓ Clean tins/cans
- ✓ Clean paper and cardboard



- ✗ What can't go in:
- | | | | |
|----------|------------|------------------|---------------------|
| Glass | Porcelain | Polystyrene | Engine oil bottles |
| Liquids | Hot ashes | Plastic bags | Automotive parts |
| Rubbish | Meat Trays | Bubble wrap | Disposable nappies |
| Ceramics | Oven ware | Garden waste | Paint and chemicals |
| Crockery | Food waste | Electrical goods | |

WHAT GOES IN YOUR BLUE CRATE?

Glass

Only recycle empty, unbroken glass bottles and jars (clear, brown, blue and green).



WHAT GOES IN YOUR BAGS?

Landfill

If it can't be recycled, reused or composted it needs to go in the landfill. Remember to wrap sharp objects like broken glass. No flammable or dangerous materials please.

Maximum weight 12kg





join our community:
Twitter • Facebook • Website

PUBLIC NOTICES

Apply for a Community Grant online

Are you planning a great community event or project – but need a little help to make it happen? We may be able to help.

Applications for our Community Grants are open, and there is funding available for Tasman-based projects that meet a community need, join communities together and have community support. Priority is given to projects that can show financial support from other sources as well. We're moving to a simplified, online-only application form this year. To help you get started, we will be running sessions at our local libraries to show you how to fill in the online form. Details of these will be posted on our website and publicised in future editions of Newsline.

Applications close on 31 July 2016.

Grants are available for projects that fit into the following categories:

- Arts/culture/heritage/museums
- Festivals and events
- Youth and children
- Social services
- Environment
- Emergency services
- Sports and recreation facilities.

Apply online:

Visit tasman.govt.nz/link/grants to fill in the online application form.

For more information:

Visit our website, tasman.govt.nz/link/grants or email Community Partnerships Coordinator Mike Tasman-Jones, mike.tasman-jones@tasman.govt.nz.

Rating Information Database

Tasman District Council's Rating Information Database is available for inspection (without fee) at Council offices during normal opening hours. The database provides the rates for the current year (2015/16) and those proposed for the next. Go to tasman.govt.nz then enter the property street address to view the current year's rating information and then click on "Next Year – 2016/17" to see next year's.

While the Rating Information Database contains a record of all information required for the setting and assessing of rates, the information will not include any subdivisions/boundary adjustments/amalgamations that were completed after 6 May 2015.

Please note legislation does not allow the names of owners and ratepayers in the Rating Information Database.

Notice given under Local Government (Rating) Act 2002.

PUBLIC NOTICES

Trees to be felled on Mapua Drive

A large group of tall pines and blue gum trees on Mapua Drive will be felled after an inspection identified them as being a safety risk.

The felling, which includes trees lining both sides of Mapua Drive near the exit from State Highway 60, is expected to take three to four weeks and may lead to short traffic delays.

Early-morning traffic should not be affected, but people travelling on that route during the day are advised to allow a little extra time, as vehicles will be stopped for short periods while a tree is being felled.

After a pine fell on the road in April, other trees in the area were inspected and found to be under stress and at risk of falling. To ensure public safety we have to remove the trees.

Anyone with enquiries about the felling can contact the Council by calling Ph. 03 543 8400.

Water main and resurfacing works

As part of their responsibility to maintain and improve state highways across the country, the NZ Transport Agency is upgrading the water main on Gladstone Road between Oxford Street and McGlashen Avenue and then resurfacing the road.

Crews are working at night from 7.00 pm–6.00 am, starting Monday 9 May, for approximately six weeks (about 25 nights work). Crews will not be working every night and given the nature of the work they will not work if bad weather strikes.

Work will occur in stages over the four weeks to minimise disruption to local residents, businesses and the travelling public.

If you have any questions or would like to speak to someone about this project please contact Andrew McAllister on 03 546 3680 or 027 448 6267. If you need to talk to someone while the work is happening, please contact Nick Hill, Ph. 027 2468 499.

Rates rebate

You may qualify for a refund of a portion of your rates. You have until 30 June 2016 to apply for a rebate for the 2015/2016 rating year.

You will have automatically received a rates rebate application form and guide if you have received a rates rebate in the past. These were sent in mid to late August 2015. You need to pay your rates account as usual. We will credit the rates rebate amount to your rates account and notify you once your application has been processed.

For more information go to www.tasman.govt.nz/link/rates-rebate

Keep up with the Tasman District Council Lowdown

Hear news items from the Council about current public consultations, Council and community projects, topical interviews, plus a range of notices about activities and events in the Tasman District.

Tune in to Fresh FM on Monday 11.40 am or Wednesday 3.40 pm. Nelson-Tasman 104.8, Golden Bay 95.0.

RESOURCE CONSENTS

The Council has received applications for resource consents as detailed below, which have been publicly notified in The Nelson Mail. The applications and supporting information may be examined in any Council office. The full public notice may be found online at Council's website (www.tasman.govt.nz). Any person may make a submission on the applications in accordance with Section 96 of the Resource Management Act 1991. Submission forms are available from Council offices and on Council's website. Please note that the following are abridged advisory notices only.

Applicant: Greenways (2010) Limited (P & R Windle)

Location: Access off Park Avenue, Takaka

Consent Type, Application Number and Proposal:

Subdivision Consent (Application RM160469)

To subdivide Rural 1 zoned land into 25 residential allotments with Roads 1 and 2 to vest with Council. The application proposes to provide only one footpath on proposed Roads 1 and 2, and to reduce the width of Right of way A; these are reductions in the standards specified within the Tasman Resource Management Plan.

Land Use Consent (Application RM160387)

Construction of a dwelling on each of Lots 1 – 25 on land zoned Rural 1.

Submissions due: 4.30 pm on Monday 27 June 2016.

Applicant: Anthony Brown & Joanne Smart

Location: 102 Carlyon Road, Mahana

Consent Type, Application Number and Proposal:

Subdivision Consent (Application RM160225)

To subdivide Rural 2 zoned land contained within a property legally described as Part Lot 16 and Part Lot 18 Deposited Plan 626 (CFR NL11B/50) to create two allotments.

- Lot 1 of 2.55 hectares and containing the existing dwelling and accessory buildings with existing access from Carlyon Road.
- Lot 2 of 2 hectares with a building site, and a new vehicle crossing is proposed onto Carlyon Road.

Submissions due: 4.30 pm on Monday 4 July 2016.

Applicant: L R & S A Powell

Location: 233 Aniseed Valley Road, Aniseed Valley

Consent Type, Application Number and Proposal:

Subdivision Consent (Application RM160002)

To subdivide Rural 2 zoned land to create two allotments:

- Lot 1 of 2.16 hectares;
- Lot 2 of 15.66 hectares (with the existing dwelling).

Both allotments will gain access by an existing formed right of way from Aniseed Valley Road.

Discharge Consent (Application RM160004)

To discharge stormwater to land on proposed Lot 1, which is within the Slope Instability Risk Area.

Submissions due: 4.30 pm on Friday 8 July 2016.

COMMUNITY NOTICES

Richmond Unlimited – Annual General Meeting

Tuesday 14 June 2016, 5.30 pm, Richmond Town Hall, Richmond.

Wakefield Community Council – Annual General Meeting

Tuesday 14 June 2016, 7.30 pm, St Johns Worship Centre. All welcome.

Winter Dance

Very popular annual dance event at the Richmond Town Hall.

All styles of dancers welcome!! Saturday 11 June 7.30 pm.

\$4 per person entry plus a plate to share.

For more information go to www.itson.co.nz

Richmond & Districts Information Centre

With the busy tourist season still with us, and winter on the way, more volunteers are urgently required to work three hour shifts on a weekly or fortnightly basis at the Information Centre in Gladstone Road.

Initially successful applicants would be required to work with more experienced volunteers before being asked to work on their own.

Although applicants should preferably have a good knowledge of the local community, this is not necessary, as the Centre has a large database.

They should be well presented and enjoy meeting and conversing with visitors from all over New Zealand and the world. The Centre is well appointed with good facilities. If you are interested in this type of work, call in to the Centre or Ph. 03 543 9521 or contact Sally Symonds, Ph. 03 542 3983 (rosters) for further details.

ROADING

Road Closures

The following roads are to be closed to ordinary vehicles for the periods and times indicated below.

Department of Conservation, Motueka – Aerial application of 1080

- Totaranui Road (from Pigeon Saddle to Totaranui)
- Awaroa Road (from Totaranui Road to Awaroa Inlet)
- Cobb Dam Road (from the Cobb hydro power station to the Cobb Reservoir)
- Wangapeka River Road (from Rolling Junction campsite to Courthouse Flat)

Friday 1 July 2016, 7.00 am – 2.00 pm (this date is weather dependent and could be carried out at later date if necessary).

Affordable Professional Funerals

We can provide every service and option, and leave you with memories of a lifetime of love.

03 544 4400 • www.wrfs.co.nz



WAIMEA RICHMOND
FUNERAL SERVICES

24 Hour Assistance – Phone your local Service Centre

Richmond	03 543 8400
Murchison	03 523 1013
Motueka	03 528 2022
Takaka	03 525 0020



Newsline is produced by HotHouse Communications for Tasman District Council and is printed by Printhouse on recycled/recyclable paper. For advertising and editorial enquiries please contact HotHouse on phone 03 545 7995 or Email: newsline@hothouse.co.nz

COUNCIL MEETINGS

Agendas and Minutes for Council meetings can be viewed on our website at www.tasman.govt.nz

Commercial Subcommittee

Tasman Council Chambers, 189 Queen Street, Richmond, Friday 24 June 2016, 1.30 pm. No public forum

Motueka Community Board Open Forum

Motueka Service Centre, 7 Hickmott Place, Motueka, Tuesday 28 June 2016, 7.00 pm. Open forum

Regional Pest Management Joint Committee Meeting

Tasman Council Chambers, 189 Queen Street, Richmond, Wednesday 29 June 2016, 9.30 am. No public forum

Full Council

Tasman Council Chambers, 189 Queen Street, Richmond, Thursday, 30 June 2016, 9.30 am. Public forum

All of your Tasman District Council information www.tasman.govt.nz

Information for prospective Council candidates

Are you considering standing for election to the Tasman District Council this year?

Anyone keen to learn more about what is involved in representing the community as the mayor, a councillor or community board member, is invited to one of three information sessions this month. The sessions will outline the role and business of Council and what the mayor, councillors and community board members do. They will also provide an overview of the election process, including important information about nominations and campaigning.

Outgoing Tasman District councillor Judene Edgar and Golden Bay Community Board chairperson Carolyn McLellan will be available to answer questions and offer a first-hand perspective.

WHEN AND WHERE:

- Tuesday 28 June, 5.30 – 7.00 pm, Takaka Bowling Club, Hiawatha Lane, Takaka
- Wednesday 29 June, 5.30 – 7.00 pm, Motueka Service Centre meeting room, Hickmott Place, Motueka
- Thursday 30 June, 5.30 – 7.00 pm, Tasman District Council chamber, Queen Street, Richmond

Local Elections 2016

**YOUR VOTE
YOUR COMMUNITY**

To register your interest or find out more, contact electoral officer Sandra Hartley: Ph. 03 543 8554 or email sandra.hartley@tasman.govt.nz

Writechoices

I love my library because ...

Thank you to all of you, our fabulous customers, who took the time to add your comments to our I love my library because ... promotion. From the down to earth to the poetic, you've given us much food for thought as well as some great ideas for promoting the library, our collections and our services.

SmartWeek – making digital technology easier

SmartWeek Richmond is almost here! A programme of free workshops and activities for business and community alike, SmartWeek's aim is to help us keep up with the rapidly evolving digital world we work and play in. As well as being the venue for many SmartWeek events, Richmond Library is also presenting a number of sessions. You can drop in for a taster using i-Movie and Garageband to create digital celebrations for special events, discover how to use your library online, find out about free online learning courses, get the lowdown on your mobile device or have a go at coding so you can understand what your kids are up to. These and many more courses are happening across the week. SmartWeek runs from Monday 27 June to Saturday 2 July. All events are free. Bookings are required for some sessions.

For full information about library-led events visit the SmartWeek Featured Events page on the library website. For a list of all SmartWeek events visit www.waeredigital.nz.

School holiday programme

School holidays are back in July. And we have an extensive range of activities and events on offer to help while away the winter days. You'll find the full programme on the library website Featured Events page. Get a headstart on the holiday rush. Stock up with books, magazines and DVDs at your local library today.

Art workshops at Motueka Library

If you haven't booked your place yet for Motueka Library's art workshops, you might still be able to secure a place. Whether you're a budding artist or you've been doodling for years, Motueka Library's series of art workshops for adults is bound to have something for you. Local artist Marian Painter will inspire your creativity with three workshops exploring drawing (20 June), the world of colour (27 June) and collage (4 July). Cost is \$12.00 and bookings are essential. Ph. 03 528 1047 to find out more.

Author Michael Bennett at Motueka and Richmond Libraries

We're delighted to have author Michael Bennett speaking at both Motueka and Richmond Libraries on Friday 24 June. Michael is the author of *In dark places*, the story of Teina Pora and his wrongful conviction for the murder of Susan Burdett.

From the streets of South Auckland to the highest court in the Commonwealth, this is the story of one of New Zealand's worst miscarriages of justice and the long battle to win freedom for an innocent man.

Michael will read excerpts from *In dark places*, answer questions and sign books. Books will be available for cash purchase. Michael is at Richmond Library, 4.00 pm – 5.00 pm and Motueka Library at 6.30pm. Gold coin donation at the door.

Patricia Grace at Takaka Library

A heads up for all our avid readers. Eminent NZ author Patricia Grace will be at Takaka Library on Thursday 28 July at 5.15 pm. Patricia will be in conversation with Gerard Hindmarsh. This should be a fascinating evening. More details will be available on the library website in early July.

Alzheimers and dementia drop in session

Our next Alzheimers and dementia drop in session is on Wednesday 22 June, 9.30 am – 11.00 am at Richmond Library. If you know someone with this increasingly common condition and would like more information or you want to know what support is available for family and friends, come on in and have a chat. Alzheimers NZ staff are in the library at this time to answer questions and help you find the support you need.

Te Wiki o Te Reo at Motueka Library

The theme for this year's Te Wiki o Te Reo is Te Reo Tautoko – behind you all the way which is about using te reo Māori to support people, to inspire and to cheer on. Motueka Library is celebrating our unique taonga, Te Reo Māori, with a number of activities throughout the week 2 – 9 July. Full details are available on the library website Events section.

Check our website out for yourself at www.tasmanlibraries.govt.nz



SEPTIC TANKS • BULK COLLECTION
GREASE TRAPS • SUMPS

Introducing our region's
largest liquid waste company
- organised, ethical and local -
keeping our homes, businesses
and public places clean and safe.



FREEPHONE 0800 725 326
www.nmwave.co.nz • sales@nmwave.co.nz