

NEWSLINE

12 OCTOBER 2018
ISSUE 434



Check your lifejackets in Safer Boating Week

It's Safer Boating Week (October 12 – 19) – a great time to check your lifejackets are up to the task.

“Many boaties’ lifejackets are too old and will not help you float,” Safer Boating Forum chair Sharyn Forsyth says.

Manufacturers say lifejackets should be replaced after up to 10 years.

“Seawater and sun are tough on equipment, and wear and tear can shorten your lifejackets’ lifespan to less than 10 years,” Sharyn said.

“Worryingly, we know many Kiwi boaties are still relying on kapok-filled lifejackets that are 30 to 50 years old. Kapok-filled lifejackets are dangerous, even if they look brand new and have been well looked after.”

Kapok is a fluffy plant fibre, similar to cotton. It has not been used in lifejackets since the 1980s because it can absorb water and cause wearers to sink.

The cotton straps on these old lifejackets are also a serious risk. They rot over time – even if a lifejacket is not used. In an emergency cotton straps can tear or break off.

Lifejackets with either kapok filling or cotton straps should be destroyed and new jackets purchased.

Modern lifejackets of all types should be tested every time before they are worn. If they are 10 years old, destroy them and replace them.

Simple lifejacket tests before you go on the water:

- Pull the straps, hard. If any of them stretch or tear, do not use the lifejacket, dispose of it, and replace it.
- Check for any existing tears or cuts in the straps. If there are any, do not use the lifejacket, dispose of it, and replace it.
- Check for any tears, cuts, or punctures in the lifejacket. If there are any, do not use the lifejacket, dispose of it, and replace it.
- Check if it floats.

Lots more information about safety, storage, and details for checking inflatable lifejackets is at www.maritimenz.govt.nz/lifejackets.

NEW WEBSITE GOES LIVE IN NOVEMBER

Our new website is coming. You'll notice some changes in the first week of November.

We've re-organised and re-written our content to make things easier to find. We've also updated our templates so that the site works well on any device. Take a sneak peek at new.tasman.govt.nz.

Mayor's message

As summer approaches, I am aware that there are many facilities we have in the Nelson Tasman region for us to all enjoy.

Whether it is sportsgrounds or recreational facilities, campgrounds, marine and river reserves, mountain biking or walking tracks throughout the District, there is so much on offer locally for each and every one of us to enjoy. The redeveloped Trafalgar Park facility recently provided a spectacular event – the game between the All Blacks and Argentina. It was a privilege to attend the match and to see the mass of people enjoying Nelson city prior to the game, and then attending the game. I was pleased that we, as a District, were able to help support an event of this nature. Just under 21,500 people attended the game. There were likely thousands of residents

within Tasman as well as those from down south, up north and overseas attending. The game showcased one of the facilities that makes our region such a great place to live and enjoy a pretty special life. We're lucky enough to be able to take advantage of these facilities and opportunities as part of our daily life and I look forward to enjoying some of these facilities in our beautiful region this summer.



Richard Kempthorne
Mayor

In case you missed it...

A summary of recent Council meetings and the decisions made.

Full Council - 27 September 2018

- Approved a range of changes to time-limited parking, bus-stops and no-stopping lines in Richmond, Motueka, Mapua, Marahau and Wakefield. The changes come either as a result of the Queen Street Upgrade, requests from members of the community who have had difficulty entering and exiting their properties, or the need to improve traffic movements at some intersections.
- Approved budgets of \$24.2 million being carried forward into the 2018 -2019 financial year for capital projects. This recognises that payments for some projects won't be made until the new financial year, as well as a small number of projects that were not started in 2017 – 2018 and will instead be carried out in the coming year.
- Heard the Council has been successful in an application for \$10,000 from the Tourism Infrastructure Fund towards a feasibility study into parking and access to the boat ramp, jetty and beach at Marahau.
- Chief executive Janine Dowding reported the Council planned to engage a cultural adviser to support the organisation in improving its awareness, understanding and proficiency in Te Ao Māori, and in its relationships with local iwi.

BETTER INTERNET IS COMING TO OUR DISTRICT

More connected rural communities are on the way. Twenty-seven sites in Tasman are proposed to improve 4G internet access to rural areas, tourism hotspots and to expand mobile coverage on state highways.

The Rural Connectivity Group – a collaborative effort by Spark, Vodafone and 2degrees – has been selected

to roll out the new rural network across the country to meet the Government's rural broadband and mobile black spot targets. To see what's planned for your area, you can check addresses at broadbandmap.nz.

To find out more about the Rural Connectivity Group, visit thercgroup.nz.

IS YOUR WATER SAFE?

Get the BEST from your water!
Take the WORST out of it!

- Water Purification
- Filtration
- UV Sterilisers
- Giardia Filters
- Water Softening

WATER TESTING SERVICE
AVAILABLE.



thinkwater.
TASMAN BAY
BEYOND IRRIGATION

397 HIGH STREET MOTUEKA.
PHONE: 03 528 8888



The specialists in design, supply and installation of domestic & horticultural irrigation, drainage, effluent & septic systems, pumps, water harvesting & tanks and water treatment & filtration.

Fish passage a priority

We are helping whitebait make their way upstream in Reservoir Creek by installing flexible baffles.

Tasman District Council resource scientist Trevor James says before the baffles were installed in April, whitebait couldn't get up Reservoir Creek, past the Hill Street culvert. Now they and other fish can because the baffles break up the fast flow of water, allowing the fish to rest.

The type of baffle we have installed is relatively new and much cheaper than other baffles previously recommended by the NZ Fish Passage Guidelines.

Removing barriers to fish migration is important because fish move between and within waterways during various life stages to reproduce, feed, and contribute to their ecosystems. When they can't complete their journey, they can't reproduce and build sustainable populations.

Trevor says although we have good evidence the baffles are working, his team is partnering with NIWA through Envirolink funding to get black and white proof.

Trevor recently talked to TVNZ One News about this, check it out at www.tvnz.co.nz/one-news/new-zealand/fluorescent-whitebait-unleashed-near-nelson-in-native-fish-conservation-effort.

Trevor says his team has done a lot of work on installing fish passages on Council-owned in-stream structures.

A large number of culverts are installed each year in privately-owned streams. They are often undersized, barring fish instead of helping them.

Trevor says rules have been in place for decades requiring all new in-stream structures to provide for fish passage. From March 2019 all existing in-stream structures (existing prior to 2010) will also have to provide for fish passage.

This rule came into force in 2014, but gave five years for landowners to do the work or come up with a plan if they couldn't get all the work done in this timeframe.



Results in from 2018 residents' survey

The results from our annual residents' survey are in, showing high levels of satisfaction with recreational facilities and the information provided by the Council, and room for improvement in roads and public toilets.

We carry out the residents' survey every year to find out how our community feels about the services we provide, identify areas to work on, and report against our performance targets.

Key findings this year included:

- 84% satisfaction with recreational facilities
- 75% feel Council provides enough/more than enough information
- 75% believe the Council has a good reputation

• 32% are not very satisfied with local roads
Areas where satisfaction levels have dropped over the past year have been earmarked for improvement. This includes our roads, provision of environmental information, public toilets, environmental planning and policy, management of coastal structures, footpaths and stormwater services.

About the survey

The National Research Bureau undertakes the residents' survey on our behalf,

interviewing 400 randomly selected residents from across the District who are over 18. For the first time this year, NBR interviewed 40 people face to face rather than over the phone, recognising that younger people are increasingly difficult to contact by landline phone. The survey has a margin of error of plus or minus 5%.

More results

You can find the full survey results on our website. Head to www.tasman.govt.nz/link/resident-survey.

PLACE BINS CONSIDERATELY

Spare a thought for our less mobile residents when putting out kerbside bins on rubbish and recycling day. Please place bins near the kerb with ample room for pedestrians to pass.

Bins on the footpath can make life difficult for those in wheelchairs, using mobility scooters or with limited sight.



WINNER
Nelson Pine
2016
BUSINESS
AWARDS

Garden
overgrown?

Putting WASTE in its Place!

CAN
PLAN

www.canplan.co.nz
547 0642

WATER MATTERS



Conserve water now to delay restrictions later

Conditions are very dry for this time of year, and the irrigation season has already begun in parts of the Waimea Plains – a month earlier than normal.

If we continue to have largely fine weather, we could face the prospect of water restrictions earlier than usual this summer.

However, it's possible to plan ahead and manage the consequences of restrictions if we all start thinking about water conservation before our water sources become stressed.

It's also a good idea to get in the habit of reading your meter. That way you'll know if your reading is unusually high - a sign you may have a leak. You can also check for leaks by turning off all your taps - if the meter is still ticking over you probably have a leak. Fixing leaks promptly will save water and money on your water bill.



Choose drought-tolerant
TREES & PLANTS
FOR YOUR GARDEN

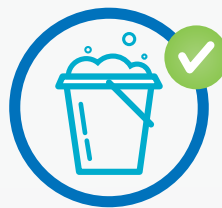


CHECK OUT OUR WEBSITE FOR A LIST OF SPECIES:
www.tasman.govt.nz/link/water-tips

HERE ARE SIMPLE THINGS YOU CAN DO NOW TO REDUCE YOUR WATER USE:

- Put a plug in the sink when washing veges rather than letting the tap run
- Put a bottle full of water in your toilet cistern to reduce flush water
- Put a plug in the sink when washing your face, hands or teeth rather than letting the tap run
- Avoid watering your garden or crops during the heat of day
- Compost mulch around trees and shrubs
- Wash the car using a bucket rather than a hose
- Use efficient irrigation devices and check soil conditions to assess whether you really need to irrigate

Head to www.tasman.govt.nz/link/water-tips for lots more ways to save water.



FLETCHER VALTIER MOORE
LAWYERS

Providing legal advice on property and business matters.

Zoe Bond
Associate

zbond@fvm.co.nz
265A Queen Street, Richmond
Ph: (03) 5438301

SURVEYING & RESOURCE MANAGEMENT

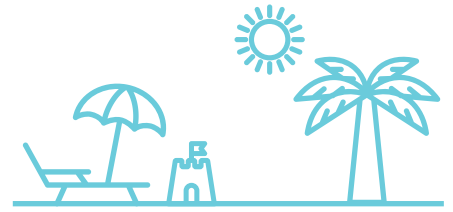
- Project Management
- Resource Consents & Planning
- Subdivision Design & Management
- Land Development Engineering



STAIG & SMITH^{LTD}
ENHANCING THE LAND

81 Selwyn Place, Nelson • Ph 03 548 4422 • www.staigsmith.co.nz

LTP BREAKDOWN: PROJECTS BY AREA



KAITERITERI WASTEWATER SYSTEM IMPROVEMENTS FOR ODOUR CONTROL AND INCREASED STORAGE
\$87,500 2018 – 2019

NEW KAITERITERI WATER SOURCE BORE
\$90,000 2018 – 2019

KAITERITERI WATER PIPE UPGRADE
\$36,000 2019 – 2020

REPLACE WASTEWATER PIPE ON SCHOOL ROAD, RIWAKA, TO INCREASE CAPACITY
2020 – 2021 \$313,500



RIWAKA – KAITERITERI ROAD SAFETY IMPROVEMENTS
\$990,000 2021 – 2023

MARAHAU ROCK SEAWALL TO PROTECT FOOTPATH FROM EROSION
\$150,000 2025 – 2026

KAITERITERI WATER RESERVOIR UPGRADE
\$90,800 2022 – 2023

RIWAKA FLOOD RISK STUDY AND WORKS
\$660,000 2018 – 2023

What's the plan for Riwaka, Kaiteriteri and Marahau?

The Tasman District Council has adopted its Long Term Plan for 2018 to 2028. Over the next few issues of Newsline we'll examine some of the plans for various parts of the District. So what's in it for Riwaka, Kaiteriteri and Marahau?

BRAND NEW

SHOWHOMES

3 Berryfield Drive, Richmond | 1 Malone Crescent, Richmond

G.J. Gardner. HOMES

Proud to be sponsoring:



CONTACT 03 543 9502 | 0800 42 45 46 | www.gjgardner.co.nz

NELSON OFFICE 195 Queen Street, Richmond

OPEN Monday to Friday, 8.00am – 5.00pm



NEWSLINE UPDATES



KEEPING YOU INFORMED ABOUT NEWS AND EVENTS IN THE TASMAN DISTRICT • 12 OCTOBER 2018

HAVE YOUR SAY:

Gravel extraction from rivers

The Engineering Services Department of Tasman District Council has applied for resource consents to take gravel from riverbeds within Tasman District.

Submissions close on Friday 26 October 2018.

Annual speed limits review

We need your input – do you think changes to the speed limit on any roads you use would help reduce serious crashes?

Feedback closes on Monday 15 October 2018.

Fill in the Active Transport survey

Getting moving is good for us at all ages – and we want to make sure Tasman District is easy to get around for those walking, cycling or using other forms of “active transport”.

Survey closes on Wednesday 31 October 2018.

Draft Control of Alcohol in Public Places Bylaw 2018

We've reviewed the Control of Alcohol in Public Places bylaw and are seeking public submissions on the new draft bylaw.

Submissions close at 4.30 pm, Tuesday 16 October 2018.

Motueka Library Redevelopment

Consultation on the options for redeveloping the Motueka Library will open on 17 October. Keep any eye on www.tasman.govt.nz/feedback for more information from that date.

Head to www.tasman.govt.nz/feedback for more information and to have your say on any of these topics.

Alcohol licence applications

Current applications for alcohol licences are advertised on our website.

Information on applications, and how to object, is available at www.tasman.govt.nz/link/alcohol-licensing.

Lift Off Abel Tasman Kaiteriteri event – event access and road closure information



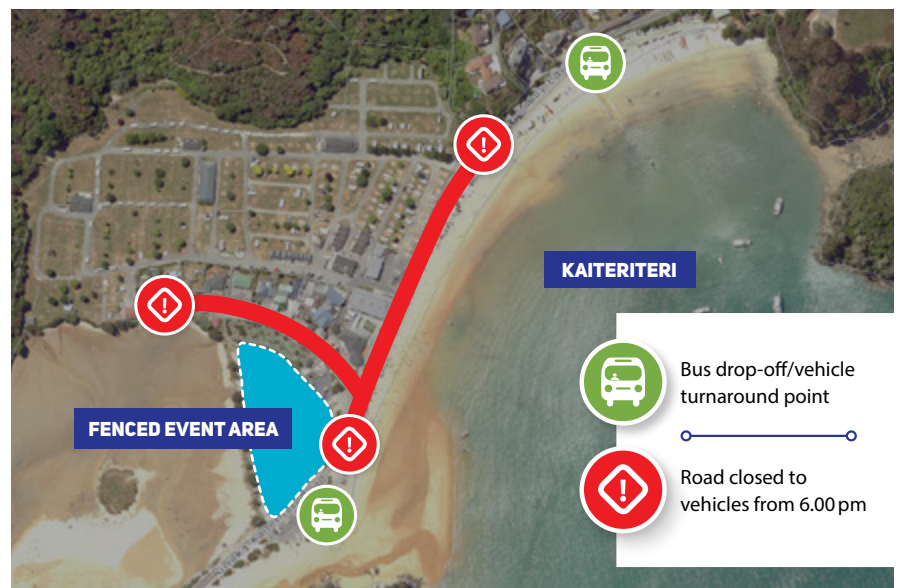
From 3.00 pm on Sunday 21 October 2018, there will be checkpoints set up at the approaches to Kaiteriteri. The marshals at these checkpoints will be advising motorists attending the event to use the ‘park and ride’ services provided by the event organisers. This is due to very limited parking in Kaiteriteri township. This will not restrict access for residents, or visitors to the area who are not attending the event.

From 6.00 pm till 12.00 am on Sunday 21 October 2018, the full length of Inlet Road and a 300m beachfront section of Kaiteriteri-Sandy Bay Road will be closed to vehicle access.

We recommend all Kaiteriteri boat ramp users return to shore before the closure is in place, or organise to access vehicles and boat trailers via Kaiteriteri-Sandy Bay Road after 5.00 pm.

Pedestrian and cyclist access will not be restricted in the closed section of road. Please see map below for closure location. Please note this is not a Council event.

For more information, including parking and the ‘park and ride’ service, please visit www.liftoff.co.nz.



Notice of intention to stop a section of unformed road known as Stagecoach Road

At the request of the adjoining landowner, Tasman District Council is seeking to stop an unformed section of Stagecoach Road.

Plans of the proposed road stopping can be viewed at tasman.govt.nz/link/public-notice. Plans may also be viewed at the Richmond office of Tasman District Council, Project 673. If the road is stopped, the land will be sold to the adjoining landowner and the land amalgamated into their existing title.

The legal road is up to 50m wide in this location. A minimum width of 20m has been retained for this section of road in case it is needed to be formed at some time in the future.

This is the first public notice relating to this proposed road stopping and is dated 12 October 2018.

For further information on the proposed road stopping please contact Jennie Kaye-Wood at Tasman District Council – jennie.kaye-wood@tasman.govt.nz or phone 543 7207.

Objections to the proposed road stopping should be made in writing, to Manager Property Services, Tasman District Council, 189 Queen Street, Private Bag 4, Richmond 7050, and must be received no later than 4.00 pm on 21 November 2018.

This notice is given in accordance with Schedule 10 of the Local Government Act 1974.

NEWSLINE UPDATES



KEEPING YOU INFORMED ABOUT NEWS AND EVENTS IN THE TASMAN DISTRICT • 12 OCTOBER 2018

Maritime event: Waka ama regatta

Between 2:00 pm and 7:30 pm on Friday 16 November 2018 and between 8.00 am and 5.00 pm on Saturday 17 November 2018, (backup day 18 November, 8.00 am – 5.00 pm) part of Kaiteriteri Bay is reserved for Motueka Waka Ama Club's annual 'Waka te Tasman' regatta.

A speed-limit uplifting is also in force for certain vessels directly involved in the regatta. Vessels wishing to transit through or use the reserved area during the event may do so only after consulting with the event organisers, and then may only do so if and when, and under such conditions, that the event organisers may choose to specify. Delays can be expected, but access will not be unreasonably denied.

Event communications are on Channel 17 on Marine VHF radio. If in doubt, call 'Race Control' or consult an event marshal (who will be wearing a high-visibility vest). Vessels entering or within the reserved area are required to comply with any direction given by the event organisers or event officials as if it were a direction given by the Harbourmaster.

Race co-ordinator: Todd Jago 0274 335 040

Visit www.tasman.govt.nz for a map of the reserved area.

Need a special licence for a summer event?

Deadline for applications 23 November 2018

A special licence allows for the sale of alcohol at special occasions or events. They are normally used to licence one-off events where no licence is currently held, such as a food and wine festival or a quiz night. A special licence can also be used to extend the hours or area of a licensed premises for a special occasion or event.

A special licence is a temporary licence. There are two types of special licence:

- On-site special licence - allows the licensee to sell or supply alcohol for consumption on the site to people attending an event.
- Off-site special licence - allows the licensee to sell the licensee's alcohol for consumption somewhere else and supply free samples.

How to apply: Visit www.tasman.govt.nz/link/special-licence for more information and application forms.

ROAD CLOSURES



Approved closures

Applicant: Nelson Car Club

Event: Car Rally Event

Location of road closure: Pigeon Valley Road from Sharp Road intersection to 409 Dovedale Road (1km east of Dovedale Road/Brandy Creek Road intersection)

Date and time: Saturday 27 October 2018, 8.30 am to 5.00 pm

Applicant: Lift Off Abel Tasman

Event: Lift Off Abel Tasman - Motueka Event

Location of road closure: Queen Victoria Street, Motueka. From Queen Victoria Street and College Street intersection to Queen Victoria Street and Green Lane intersection.

Date and time: Saturday 20 October 2018, 2.00 pm to 12.00 am

See page 6 for detailed information on Lift-Off Kaiteriteri road closures.

Proposed closures

Applicant: Richmond Unlimited

Event: Richmond Santa Parade

Location of road closure: Queen Street, from intersection of Edward Street to intersection of McIndoe Place. Full length of Edward Street. Full length of McIndoe Place. Croucher Street for length of Sundial Square. Closure of the Petrie/Harkness Carpark. (Resident access available)

Date and time: Sunday 25 November 2018, 6.30 am to 4.00 pm.

Date objections close: Sunday 28 October 2018

Funding for Motueka community organisations

The Motueka Community Board has awarded grants to three groups doing good work in the community.

The board has allocated \$500 from its discretionary fund to Nga Watene o Motueka for the safety patrol provided by Maori wardens.

Big Brothers Big Sisters will receive \$500 towards recruitment, training and support for volunteer mentors.

The board also approved \$500 to the Motueka Community Christmas Dinner.

Proposed car rally closure

Pursuant to the Transport (Vehicular Traffic Road Closure) Regulations 1965, notice is hereby given that the Tasman District Council for the purpose of a **Westland Car Club Rally** event proposes to close the following road to ordinary vehicular traffic for the period indicated hereunder.

During the proposed period of closure the following provision will be made for ordinary vehicular traffic which would otherwise use the road: NIL

Any person objecting to the proposals is called upon to lodge notice of their objection and grounds thereof in writing, before Saturday 3 November 2018 at the office of the Council at: 189 Queen Street, Private Bag 4, Richmond 7050 or via email info@tasman.govt.nz.

Road proposed to be closed to ordinary vehicular traffic: **Matakitaki Road, Murchison**. 1.6km south of Matakitaki Road-Fantail Lane intersection to 18.6km south of Matakitaki Road-Fantail Road intersection.

Period or periods of proposed closure:

Saturday 1 December 2018, 7.30 am to 5.00 pm.

Council Meetings

Agendas and Minutes for Council Meetings can be viewed on Council's website at www.tasman.govt.nz.

Unless otherwise stated, all meetings will be held at Council Chambers, 189 Queen Street, Richmond.

Motueka Community Board

Motueka Service Centre, 7 Hickmott Place, Motueka. Tuesday 16 October, 4.00 pm. Public forum

Environment & Planning Committee

Thursday 18 October, 9.30 am. Public forum

Full Council Meeting

Thursday 18 October, 2.00 pm. Public forum

Engineering Services Committee

Thursday 25 October, 9.30 am. Public forum

WRITE CHOICES



Spring escape surprise reads at Motueka

Join us for new reading experiences by springing into a surprise book at Motueka Library. Discover an exhilarating escape into another time or place.

Surprise reads take the stress out of deciding whether or not to try a new author or genre. You'll discover new writers you might not otherwise stumble across and find yourself in delightful new settings.

All you have to do is choose a parcel, have it issued to you and then see what interesting books await you.

Motueka's Surprise Reads runs until the end of October.

Your library – open a book, open a world

Richmond Writing Group's October guest

How do you think you'd cope after 24 hours without sleep? How about 48 hours with no sleep?

Local author HG Bells has thought long and hard about how the world would be if humanity was afflicted by a plague of terminal insomnia. The result is *Sleep Over*, a collection of waking nightmares.

Listen to HG Bells talk about her novel and her journey to becoming a published author in the competitive North American printed book market.

HG Bells is at Richmond Library on Tuesday 16 October, 1.00 pm – 2.00 pm.

The Richmond Writing Group will meet for writing or discussion from 2.00 pm - 3.00 pm.

Think Vegetarian at Takaka Library

Takaka Library is celebrating world vegetarian month with two talks.

Join Sunshine Appleby on Friday 19 October at 1.00 pm as she shares the story of her journey into the vegan lifestyle. Come along and hear local Takaka resident Mangala's anecdotes of 40 years of vegetarianism on Thursday 25 October at 1.00 pm.

Whether you're already vegan or vegetarian or you're interested in learning more about these lifestyle choices, come and hear these speakers share their passion for food, nutrition and cooking without meat.

Heather Thomas talks volunteering at Richmond Library

What is it like being a volunteer? Is it all about helping other people or do you learn something about yourself along the way?

Heather Thomas has been active in a variety of community groups for many years, including working as a volunteer for Citizens Advice Bureau. She believes that people working together to improve community enriches everyone's lives – including the volunteers!

Join Heather at Richmond Library on Thursday 18 October from midday for a fun, interactive and informative talk.

You'll discover the extraordinary range of questions Citizens Advice Bureau volunteers are asked and be surprised at what you'll learn along the way.

Garden Gurus at Motueka Library

Join Motueka's Garden Gurus in talking and learning about gardens and plants.

The Garden Gurus meet on the second Monday of each month at Motueka Library, 11.00 am - 12.30 pm.

Gatherings include socialising, browsing the library's books on garden topics, listening to guest speakers and various activities, workshops and garden tours.

If you're interested in seed and plant swaps, planting herbs, investigating garden questions and generally learning about all things garden, then this is the group for you!

LABOUR DAY HOLIDAY CLOSURE

All Tasman libraries will be closed on Monday 22 October, Labour Day.

Head into your local library this week and stock up on books and DVDs for the long weekend.



Visit our Facebook Page!

Give us a Freecall

0800 725 326

Make an Online Booking

www.nmwaste.co.nz

<https://www.facebook.com/nmwaste.co.nz/>

For Helpful Tips with your Septic Tank ...

Have any useful suggestions? Let us know!

Share The Love!

Helpful Tips

