



NEWSLINE

PĀNUI 30 JUNE 2023
ISSUE 549

tasman district council Te Kaunihera o te tai o Aorere

KEEPING YOU INFORMED ABOUT NEWS AND EVENTS IN TASMAN DISTRICT



Cheap, convenient and coming soon!

Lots of questions have been coming in about our new bus services starting on 1 August.

Timetables have not yet been finalised, but you can see an interactive map of the new routes at shape.nelson.govt.nz/ebus.

Seven days a week between 7.00 am and 7.00 pm, there will be half-hourly bus services between Nelson and Richmond, and a new airport route.

Monday to Friday, between 7.00 am and 7.00 pm, there will also be four return services from Motueka, Tasman Village and Māpua, and six return services from Wakefield, Brightwater and Hope.

There will be a new low \$2 flat fare within the same zone (on Bee Card). You can still pay with cash, but your Bee Card will make it cheaper. Children under 13 will travel for free, and people under 25 for half-price.

If you get your next bus within one hour, you will also get a free transfer. Just tap

your Bee Card as normal, and the system will take care of things. So, if you need to get from Richmond to the airport, even though you need to switch buses, this will still only cost you \$2.

Holders of Super Gold Cards can travel free with their Bee Card on all off-peak bus services (services running between 9.00 am and 3.00 pm and after 6.30 pm weekdays, and all weekend services).

Community Services Card holders can also get a 50% discount by using their Bee Card with Community Connect concession loaded.

New bus zones:

- Nelson – Richmond Zone: anywhere between Atawhai and Richmond South / West.
- Motueka Zone: Motueka and Tasman Village.
- Moutere – Waimea Zone: Wakefield, Brightwater, Hope and Māpua.

TRANSPORT TALES



Getting over the hill is now easier on the wallet

We are pleased that we've managed to secure funding to subsidise bus fares for Nelson and Tasman locals to get to and from Tākaka and Motueka.

We've come up with a scheme and we're working with Golden Bay Coachlines to cover half the cost of adult fares over Tākaka Hill, so now it will cost \$16 to get over the hill.

The kids don't miss out either because with our subsidy it now costs just \$6 to travel between Tākaka and Motueka, or back the other way.

Services run on Mondays, Wednesdays and Fridays.



Passengers will need to prove they are residents by showing some form of ID like a local library card or another proof of address like a rates, power or telephone bill.

Bookings can be made at the Golden Bay Coachlines office on Commercial Street in Tākaka, or by phoning 03 525 8352.

At this stage, this is a trial arrangement until the end of September but if it's successful we will consider extending it.



Improved safety coming to a street near you

There are lots of improvements about to happen on numerous streets across Tasman during the next 12 months or so. But what's it all about?

We have two major government-funded programmes underway in Richmond, one in Māpua and another in Motueka, under the umbrellas of Streets for People and Transport Choices.

The projects are designed to do different things, but with similar outputs. Transport Choices is about building climate-friendly infrastructure quickly, while Streets for People is trialling a new way of delivering projects focused on testing and adapting based on community feedback.

The work we're doing aligns with the Government's Emissions Reduction Plan and Road to Zero, Aotearoa's road safety strategy where we're working to make it safer, easier, and more attractive to walk, ride bikes or scooters and take public transport.

For example, our Streets for People programme on Salisbury Road has made trial changes so you can experience the options before we work through longer-term solutions.

We are going to be rolling out similar projects on Queen and Hill Streets, plus Champion and Wensley Roads ... and the same is happening on Aranui Road in Māpua.

For our Transport Choices projects in Richmond and Motueka, we want to work with you before we make any changes to the street to ensure what's proposed suits your needs and that of the wider community.

In Richmond, we're starting by focusing on the William Street neighbourhood while in Motueka we're evaluating community feedback before deciding where we will start work.

Get all the details at shape.tasman.govt.nz.

G.J. Gardner. HOMES

VISIT OUR SHOWHOMES

86 & 88 Berryfield Drive, Richmond



CONTACT 03 543 9502 | 0800 42 45 46
OFFICE 195 Queen Street, Richmond
OPEN Monday to Friday, 9.00am – 5.00pm
www.gjgardner.co.nz





Closing in on Kingsland reopening

We've been having some stunning winter days in our region lately – perfect for a ride or walk in the hills.

Kingsland Forest Park is top of the list for enjoying amazing views and a user-friendly experience in the great outdoors, only a few minutes from the centre of Richmond.

As you'll have noticed, there's been some significant works taking place across the hillside in recent months as we've been undertaking a harvest of a section of forest.

Our forest managers, PF Olsen, have done a great job in carrying out this project with care and efficiency.

However, there is still some work to be done around the removal of logs and slash as well as road realignment.

Like you, we're eager to have the trails and tracks on the reserve reopened to the public as soon as possible.

For now, the current closures remain in place. While some areas might look safe to access, as work continues, we are aware of the risks posed by hazards such as rockfall.

There is public access to Grassy Saddle via the Hill Street South walkway. You can also use the Reservoir Creek tracks as far as the big trees via Easby Park.

We believe a completed harvest means a tidy hillside with minimal slash and debris. This ensures we can then begin work on creating a new phase of life for Kingsland Forest Park.

Please continue to follow any signage for the time being and look out for any further updates on our website.



New growth underway with winter planting at Kingsland

As the harvesting operations come to a close, we've already made a start on planting new species around the harvested hillside of Kingsland Forest Park.

We started this over the past couple of weeks and will continue throughout winter – a great step toward developing the long-term future of Kingsland.

The winter season of planting will see around 36,000 natives and 15,000 exotic trees put in the ground. That seems like

quite a few trees, but it's just the start of a wider programme to create a permanent mixed exotic and native recreational forest park for Richmond and the wider region.

These plants are small at the moment, but in time they will grow to become integral parts of this new phase of life for the reserve. So it's important to be aware of them and give them some space if you're out and about in the hills once trails reopen.

Get physical in our parks

There's a lot more to some of our parks and recreational areas than just playthings for the youngsters.

We have installed fitness equipment in various spots across Tasman.

For example, in the Berryfields and Meadows neighbourhoods, there are a couple of places where you can get your fitness fix in our parks.

In Central Park, we've installed four types of multi-functional fitness objects.

You can use the Endurance Wellness Stone for a wide variety of exercises, including intense sequences aimed at strengthening the chest and triceps muscles. Elastic bands with various resistance levels can be attached to the four hooks to perform strength and coordination exercises.

The high and low box jumps are workout tools that are extremely popular among fitness professionals. They allow an explosive movement, outstanding for

strengthening glutes, quads and calves, while improving balance and agility.

The bi-level pull-ups are designed to increase mass and strength in the upper body. Two-level pull-up bars provide complete and multifunctional exercises for beginners and professional users.

Then you can use the converging p-bars to develop balance and strength in your triceps, shoulder muscles and chest. Although designed for the most demanding users, a wide range of workout exercises are possible.

We have fitness equipment in other parks and plan to install more in other places across Tasman.



Freshwater farm plans trickle into Tasman

The Freshwater Farm Plan Regulations have now been notified and start on 1 August 2023. Our staff have been working hard to dissect them so they can be presented to you in an easily digestible format.

Freshwater Farm Plans (FWFP) are a practical way for farmers and growers to identify, manage and reduce the impact of farming on the freshwater environment.

They are scheduled to be rolled out in Tasman starting 1 January 2025.

Following that, farmers and growers will have 18 months from when their Freshwater Management Unit is 'switched on' to complete their plans and have them certified.

We will be working closely with industry-led programmes to understand what they can deliver and how local catchment context and the detail of the regulations will be included.

Where farms in the Tasman District have existing Farm Environment Plans, or are working with an industry assurance programme, we will work with the

landowner and/or industry group to ensure there is an integrated approach.

This will ensure that any good planning being done on farm is added to, rather than overridden when it comes to incorporating FWFP requirements. We want to build on, rather than duplicate effort.

Our recently appointed Catchment Facilitators are responsible for working with catchment groups, industry groups and individual landowners.

A flexible approach will be taken to allow for differences within each catchment area. The Catchment Facilitators will be able to assist with writing freshwater farm plans should this be needed. Their support is provided at no further cost to the farmer/grower.



Safe bores are healthy bores

We want to remind residents taking water from their own private bores to ensure that the water consumed by their household is safe.

Residents abstracting water from shallow aquifers which are vulnerable to contamination have a responsibility to have adequate water quality treatment systems in place to ensure their water is safe from potential sources of contamination.

It is also important for landowners to know activities on their properties can have an impact on the water quality in the underground aquifer where the water comes from.

If you have a bore on your property, please ensure contaminated water cannot get back down into the bore either through flooding or backflow.

Contamination can include stagnant water near the well, localised seepage into the well, animal faecal contamination, septic tank seepage, and runoff/seepage following rainfall.

Even if the water from your bore looks clean and smells fine, contamination cannot normally be noticed just by looking at or smelling it.

That's why it's important to have a water quality treatment system in place which will ensure the water is safe to drink.

There are a number of treatment options available, ranging from boiling through to filtering, chemical or UV treatments.

If you're on a private water supply and you have concerns about your drinking water safety, we recommend you:

- Get your water tested.
- Check your filtration system is maintained.
- Consider boiling your water.

If you need advice about water quality from private water supplies, please do not hesitate to contact us and ask to speak to an environmental health officer.







**Has your grease trap been emptied recently?
Keep your system healthy with an annual service.**

Grease traps / Sumps / Septic tanks / Waste oil / Hazardous waste

FREEPHONE 0800 725 326
EMAIL bookings@nmwaste.co.nz

nmwaste.co.nz



New artworks turn Tasman streetscapes into galleries

Bland cabinets across Tasman have again been turned into lively artworks by talented artists thanks to a continued partnership between Chorus and Tasman District Council. We are now looking for artists to beautify the next round of selected cabinets in Richmond, Wakefield, Motueka, and Tākaka in the near future.

Mayor Tim King says works are a celebration of everything Tasman, with a wide variety of themes and styles. "The works really brighten up the roadside and people's day, connecting residents with their widely varying themes," he says.

Over the past year, the programme has created five new pieces of public art from talented local artists. The works are as varied as they are colourful.

In Richmond's Hill Street, there is a modern take on Hine-te-Kapua, the Māori goddess of the clouds, as well as a tribute to a very different kind of icon, that kiwiana staple Marmite. Also in Richmond is an abstract recreation of the inside of the cabinet, with a colourful series of interconnecting fibres.

In Motueka, there is another abstract creation, this time a tribute to the strong wāhine of the Tasman District, both living and their tipuna.

Finally, just south of Wakefield on SH6, there is a bubbly subsurface seascape, bringing a splash of ocean blue to the State Highway.

To apply to be involved this year, keep an eye on the Chorus website: chorus.co.nz/community/cabinet-art-programme. Submissions open 1 July.



Celebrate Matariki with us!

Matariki signals the Māori New Year. It's a special time of renewal and we are celebrating.

Matariki is the Māori name for the cluster of stars that rises in midwinter and for many Māori, heralds the start of the new year.

The return of the constellation is commemorated by Te Rā Aro ki Matariki 2023, which happens on Friday 14 July this year. Early in the morning, just before dawn, is the best time to view the Matariki cluster.

In Tasman, we're celebrating the rising stars with special family fun events in Richmond and Motueka.

On the evening of Thursday 13 July, we're kicking off at around 5.00 pm at Washbourn Gardens in Richmond where you can sit back and listen to the Harmony Hunters band, watch kapa haka, be enthralled by fire performances, join a special star-themed treasure hunt and grab a snack from the various food trucks plus plenty more.

Entries in our competition to create an enlightening piece of artwork to mark this special event will also be on display. The challenge is to make a light lantern, light sculpture or light display which encompasses Matariki. If you want to take part in this competition, visit tasman.govt.nz/matariki-light-competition for more information.

The focus of Matariki celebrations in Motueka will be on Friday 14 July at Decks Reserve between 6.00 pm and 8.00 pm. Enjoy an abundance of family fun and activities including a performance by Te Oro Hā, music, food, star gazing and Kanikani dances.



FUTURE FOCUS



Waimea South Community Facility gathers pace



The building blocks to bring improved sporting, cultural, health and recreational facilities to the people of Waimea South are beginning to stack up, following some positive early discussions between the Council and community.

The long-term emphasis and focus of the Waimea Community Facility project is a community-driven project that better engages with the people and their needs.

At a recent workshop with Moutere-Waimea Ward Councillors and stakeholder groups, attendees offered a positive response to the findings of a needs analysis report and agreed to progress on a number of items.

They also agreed on the importance of bringing the Waimea South District together on this project, proceeding under an expectation of community-led delivery with Council support.

At this stage, a split provision development scenario is preferred. This may mean the facility is not a single space, but a few spaces spread across both the Wakefield and Brightwater communities.

There is a potential for modifications and upgrades on existing facilities in Brightwater, while new construction is likely on a site at Wakefield Domain.

There was \$200,000 allocated under tranche one of the Government's Better Off Funding for feasibility and design work. Further funding to progress the facility will be considered under Tasman's 10-Year Plan discussions.

The next step in the process involves taking the needs analysis report to Council as well as ongoing engagement and dialogue between the Council, community and established working group to refine plans and requirements.

Volunteers needed for Te Mamaku Drive planting project

The Te Mamaku Native Corridor Project beside SH60 between Tasman and Māpua is well underway for the 2023 planting season, having successfully completed Block 0 last year with great tree growth.

The project is a sub-committee of the Tasman Area Community Association, which seeks to connect the Waimea Estuary and Moutere Inlet with native bush and trees.

Contractors are now ready to plant 11,000 trees into Blocks 1 and 2, thanks to these generous funders: Rātā Foundation, Restoring the Moutere, Pub Charity, Nelson Building Society, NZMCA, Trees That Count, NZ Landcare Trust and OneTree, Network Tasman, Tasman District Council, Whenua Iti Outdoors and individual donors.

It has also been selected as the chosen Nelson Tasman project for the He Rā Rākau Titapu – King Charles III Coronation Plantings, the New Zealand Government's official gift to celebrate the coronation of King Charles III.

A project has been selected for each region being delivered through a range

of communities, iwi and hapū, farming and environmental organisations undertaking ecological restoration projects.

Over 100,000 trees will be planted around Aotearoa during 2023 and 2024 as part of this programme.

Our share of 7,000 trees from this fund will mean 1,200 trees will be planted in Block 5 this July and 5,800 trees in Block 3 in 2024.

Volunteers are needed for working bees in July and August to install over 12,000 plant guards and stakes. If you're keen to help out, get in touch with Michael Markert, at michamarkertnz@gmail.com.



Our Annual Plan adopted

We have now adopted our Annual Plan for the 2023/2024 year, enabling rates to be set for the next 12 months and at a rates revenue increase of 8.57%.

The Annual Plan was adopted by Council at its meeting on June 22, 2023. The plan outlines the projects and services for the year ahead.

Staff will now finalise the design of the Annual Plan 2023/2024 document,

publish it on our website and make copies available at our service centres and libraries in the coming weeks.

The Schedule of Fees and Charges 2023/2024 was also adopted at the same meeting. The new fees and charges will apply from 1 July 2023.

Further details can be found at tasman.govt.nz.



Councillor Barry Dowler, Motueka Ward

Hi, welcome to winter. The frosts at my place are getting whiter. Please make sure your vehicle is up to the winter conditions – good tyres, wiper blades and check your lights. Safety is paramount.

The Council is very busy. Getting the rates rise down as low as it can be while remaining functional. Items beyond our control have influenced where we are. Ballooning infrastructure and insurance costs, inflation and new government regulations all have unwanted effects.

It's great to see the Waimea Community Dam has been signed off to allow filling to happen, quite a process with testing done throughout the whole exercise to make sure everything is right.

An independent report done before the Dam was started indicated that there would be 500 new jobs in the area over five years due to increased production. Hopefully that is true, but where do we find 500 workers and where do they live if they shift into the area? One benefit can create other problems.

Now to the exciting bit – the new bus services out to Motueka and Wakefield. They are scheduled to start on 1 August, if the buses turn up on time. They are fully electric, which is new technology to the area.

For more information about these new bus services, including days and routes, visit shape.nelson.govt.nz/ebus.



Golden Bay Community Board

At our June Community Board meeting, we talked about the need for the Community Board to be more proactive within our community. We discussed the importance of being effective in our community and how we can really get to know the people.

We would love to know more about community projects and groups that need advocacy or support, so please get in touch with us.

We will be holding a strategic planning day where we will discuss all these things and how we can achieve them. It is important to us that we really know and understand our community so that

we are well-placed to meet their needs and plan for a sustainable future.

We will be looking to identify gaps within our Board and the contacts we have, and to ensure that we are well-connected. We will be seeking community input into identifying issues and priorities for the Bay, and we are always open to discussing them.

As part of our strategic plan, we will be consulting closely with the community to ensure we have as much input as possible.

If there is anything you think your Community Board could help with, please reach out to us.

WHAT'S ON IN TASMAN



Community planting days

- **Sunday 2 July, 9.00 am – 1.00 pm, Manuka Island. Follow the sign to Manuka Island from Redwood Road.**
- **Sunday 9 July, 9.00 am – 1.00 pm, Sandeman Reserve, Richmond. Parking at the end of Sandeman Road.**

Join the Battle for the Banded Rail in their community planting efforts. Everyone is invited! Please bring gloves, a spade and drinking water. Wear solid footwear and clothes suitable for the weather conditions. Morning tea is provided. For more information, email Kathryn at bandedrail@gmail.com.

Wellby Talking Cafés

- **Tuesday 11 July, 10.00 am – 11.30 am, Tapawera Community Centre.**
- **Tuesday 11 July, 1.30 pm – 3.00 pm, Richmond Library.**
- **Wednesday 12 July, 1.30 pm – 3.00 pm, The Wholemeal Café, Tākaka.**

Wellby Talking Cafés welcome everyone for a relaxed cuppa to start your journey connecting with others who enjoy the same things. You can pop in for a quick chat or stay for a longer conversation with friendly people. There is no need to register, just turn up on the day.

Positive Ageing Forum

Tuesday 4 July, 1.00 pm, Richmond Library.

The Nelson Tasman Positive Ageing Forum provides an opportunity for

older persons and agencies who work for and with them to enable residents to age positively. This time we will have several speakers and time for questions and community updates. This forum is dedicated to Elder Abuse Awareness Day. All welcome!

Matariki-themed school holiday fun

The first two weeks of July are filled with Matariki-themed school holiday fun at all our libraries. We have community art workshops and exhibitions for adults and children alike. Kate Souness is holding workshops for you and your whānau to learn about Te Kāpehu Whetū, the traditional Māori star compass; or you could drop into the lantern-making workshop at Richmond Library.

Visit tasmanlibraries.govt.nz/school-holiday-fun for a full list of events

Art displays

There are regular art displays at the Richmond Library. In July, our glass display cabinets showcase work by individuals from the Waimea Menzshed while our gallery wall displays pieces by local self-taught abstract artist Jet (Jeanette) Brough. Jet says her inspiration comes from our awesome natural environment.

If you're interested in sharing your artworks, crafts, historical treasures or more in either of our spaces, phone Richmond Library on 03 543 8500.

NEWSLINE NOTICES



Development Contribution Charges inflation increases

Under Section 106 of the Local Government Act, we have applied inflation to the development contribution charges set in our Development Contribution Policies. New charges for Development Contributions now apply, after being adjusted for inflation. The new rates apply to all complete consents and connection requests applied for from 1 July 2023. These charges are set out on our website at tasman.govt.nz/development-contributions.

Register your dogs now

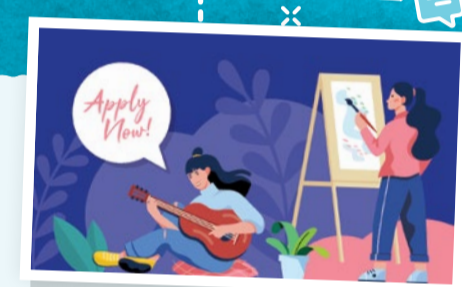
All Tasman dogs need to be registered by July each year. Any dogs that are still unregistered and unpaid on 1 August will incur a 50% penalty fee. Registration fees are \$53 for an urban dog and \$32 for a rural dog. Visit tasman.govt.nz/dog-registration.

Matariki hours and services

All service centres and libraries will be closed for the public holiday on Friday 14 July. Usual opening hours apply otherwise. We are always here to help when needed, call 03 543 8400 anytime.

There are no changes to the rubbish and recycling collections. All our Resource Recovery Centres will be open as normal.

The Richmond Loop bus service does not operate on public holidays. Visit nbus.co.nz for updates on other services.



Arts funding closing soon

Our Creative Communities Scheme has funding available to help groups and individuals running arts projects in Tasman. But get in quick, because this round of funding closes on Monday 10 July. Creative Communities provides funding to support community involvement in the arts – music, theatre, festivals, mural painting, outdoor sculptures, art in public spaces, kapa haka, singing, art workshops and more. Apply at tasman.govt.nz/creative-communities.

Council hui

Meetings will take place in person and via Zoom. For details and the Zoom link visit tasman.govt.nz/meetings-calendar. Unless otherwise stated, all meetings will be held at Council Chambers, 189 Queen Street, Richmond.

Nelson Tasman CDEM Coordinating Executive Group

Wednesday 5 July, 2.00 pm. Emergency Ops Centre, 28 Oxford Street, Richmond.

Operations Committee

Thursday 6 July, 9.30 am.

Golden Bay Community Board

Monday 10 July, 1.00 pm. Tākaka Service Centre, 78 Commercial Street.

Strategy and Policy Committee

Thursday 13 July, 9.30 am.

ZOE BOND SENIOR ASSOCIATE

Providing practical property, business, estate planning and trust advice

03 543 8301 ▲ zbond@fvm.co.nz
265a Queen Street, Richmond
www.fvm.co.nz

**THINK
PLAN DO**

Engineers / Surveyors / Planners

Land Surveying / Resource Management
Environmental Science / Geotechnical Engineering
Civil and Structural Engineering

Level 1, 42 Oxford Street
Richmond 7020
0800 999 333

nelson@do.nz
www.do.nz

do DAVIS OGILVIE
ENGINEERS / SURVEYORS / PLANNERS