



Tasman welcomes the Future for Local Government Report

The Future for Local Government review panel has released its final report, which presents recommendations and findings about critical changes needed to ensure local government can best support local democracy, intergenerational wellbeing, and Te Tiriti partnership in the years ahead.

Many of the recommendations reflect the work we already have underway or are already prioritising and doing well, especially as a unitary Council.

One of the conclusions of the report is that the structure and operation of all councils will need to be renewed to ensure local government is fit for the future.

The report's suggested changes are significant, implementation would take time and coordination, and there will be no certainty until after this year's general election.

We are working alongside our elected members to give the content of the report careful consideration for how

the proposed changes would impact Tasman communities.

The report proposes a two-year locally led consultation period to determine a structure that would best meet local needs.

This is a real opportunity for our region to shape its own future and determine what works best for its communities – we appreciate one size does not fit all.

What is important is that wellbeing, value, delivery, efficiency and effectiveness are at the core of local government.

While we see how this unfolds, it is essential that we stay focused on continuing to deliver for our communities.

WONDERFUL WATER



New bores go below the surface of groundwater testing in Waimea West

We've recently enhanced our ability to monitor the state of groundwater on the western margins of the Waimea Plains around Waimea West with the installation of two new monitoring bores.

The local drilling company, Waimea Drilling, drilled these bores to a depth of 12 metres, one along Challies Road and the other along Golden Hills Road.

These will be of great assistance to our Environmental Information team for enhanced monitoring of the Appleby Gravel Unconfined Aquifer near the margins of the aquifer, including the assessment of future Waimea Dam release effects in the area.

We monitor groundwater levels in all the major aquifers in the District and currently operate 50 automated groundwater level monitoring sites. Most of these sites are located where real-time data is required for water management purposes.

Groundwater levels are measured at each site every 15 minutes and logged



in a datalogger with data also remotely transmitted to us so we can observe what is happening to these levels over time. All levels shown are reported in relation to metres above mean seal level (amsl) once the survey of the bore is completed.

Up-to-date data from these sites are available on our website: tasman.govt.nz/groundwater-levels.

Both new bores are on our road margins, and staff have worked closely with the adjacent landowners during the installation.

The data from the new monitoring bores will be available once the monitoring equipment is installed but can be measured manually in the interim.

School pools resources for weekend wetland working bee

One of our wetland restoration projects near Mahana recently benefited from the support of the local school community with a mutually beneficial weekend working bee.

We have been working with the Porter family in recent months to undertake a constructed wetland project on their Moutere Hills property.

Work began earlier this year to reconstruct stream meanders, reconnecting with its floodplain and adjacent wetlands.

The results have been impressive so far, but what's a wetland without some plant life to enhance the area?

Parents and kids from Mahana School managed to get more than 7000 plants in the ground over the course of a weekend last month.

As well as doing their bit for the environment, the planting also doubled as a fundraiser to enhance their school pool.

Luke Porter said the collaboration was part of a vision for environmental change that the family had looked to achieve since moving onto the land seven years ago.

"The best part is just getting the community on board, replanting all the natives back into this wetland, and the next generation is going to be able to see this as it used to be – an important part of the ecosystem."

The constructed wetland project is part of wider efforts to protect and enhance the native vegetation communities in natural wetlands across the District.

Funding for the Council's contribution to the project is being provided by the Ministry for the Environment's Jobs for Nature Freshwater Improvement Fund.



TRANSPORT TALES



Students help get Māpua on the move

The voice of young people is being heard in our Streets for People project as we focus on improving the safety of all users of Aranui Road in Māpua.

We began last September with a workshop with year seven and eight students from Māpua School to come up with a list of benefits and barriers to walking and cycling to school.

From that event, six students were chosen to become Active Travel Champions, who worked with our Schools Travel Planning Advisor Nic Brydon.

Together they've investigated ways of slowing traffic, found safer routes to and from school, and engaged with their wider school community through a series of surveys.

The group of youngsters also helped organise an art competition to create works that can be used along the new pilot road layout.

The criteria were to reflect Māpua's uniqueness in a way that can easily be transferred onto a stencil; we were looking for something bold and simple.

From 30 entries, five finalists were selected, with two designs chosen to potentially be used in the project. The two winners were Zoe Crofskey with the heron/koru image, and Zoe Templeton-Bernal whose design represents a wave and koru.

Pictured: Mackenzie Beveridge, Kate Jones, Zoe Crofskey, Zoe Templeton-Bernal with Project Team members Nic Brydon and Faye Riley.



Better bus batteries

If you were to open the engine bay of one of Nelson Tasman's new electric buses next to the engine bay of a Nissan Leaf, you'd notice at least one key difference – a different battery.

The Foton 12m Electric City Bus, 17 of which have arrived in Nelson ahead of the 1 August launch date, uses a lithium iron phosphate (LFP) battery as opposed to the nickel magnesium cobalt (NMC) batteries used in many electric vehicles.

LFP batteries are safer and more sustainable than NMC batteries. They are more in tune with the needs of our new bus network in almost every way when compared to an NMC. The LFP battery has a longer life cycle, is better value, and as it doesn't use nickel, magnesium, or cobalt, is more environmentally sustainable.

They are also less likely to catch fire. LFP batteries are less prone to this issue than NMC batteries due to their more stable chemical structure.

The LFP batteries that will come with our buses are expected to last for more than 10 years, but once they reach that point, it won't be the end of their journey.

There are options like running the buses on a shorter route, or alternatively, the old batteries can be reused at the Richmond bus depot to store energy from renewable sources to charge buses or supply power to the depot.

Infrastructure improvements for Pōhara

A four-month-long infrastructure upgrade project is underway at Pōhara in Golden Bay. We are installing a new wastewater pipeline in the road on Abel Tasman Drive to ensure the system can cope with potential future development.

The new wastewater pipeline will run from the Four Winds wastewater pump station, near the former Totally Roasted café, to connect with the Pōhara Valley wastewater pump station on the corner of Abel Tasman Drive and Pōhara Valley Road.

Residents will be contacted when the work gets near their property to ensure access is maintained and to answer any

questions. Work started last week and is expected to be finished in October.

For more information, email projects@tasman.govt.nz.



Motueka High Street cycleway deferred

The installation of cycleways on High Street between Wharf Road and Whakarewa Street has been deferred and will not occur as part of the current Motueka Transport Choices project.

Transport Choices is a Council managed and Waka Kotahi funded project aimed at making the streets around Motueka safer and more appealing for those choosing to walk, cycle and drive.

An impressive volume of feedback from the community is shaping the project having received input from more than 500 individuals, groups and businesses.

Responses to the proposed project work have been varied, from ardently supportive through to passionately against, with a huge variety of opinions in between, says Transportation Manager Jamie McPherson.



"The community has given us some excellent ideas for how they want or need the transport system to function for them and their families, and how to keep mobility scooters, scooters, walkers, e-bikes and cyclists safe in our community."

Jamie says this project has been an opportunity for us to work with the community to come up with designs for the streets used every day by all forms of transport.

"We want Motueka to have streets where people feel safe enough to have a choice, whether they drive, cycle or walk."

We will revisit what is possible and what the community would like to see on High Street in the future.

COOL COMMUNITIES



Community grants help young people

In a quiet valley near the Wairoa River, not far from Brightwater, there's a farm that offers support and guidance for young people and adults who are finding things a bit tough.

Fossil Creek Farm Trust works with those who are struggling with anxiety, low self-esteem, depression, isolation, or life in general.

Staff have social work qualifications and use animal therapy, nature therapy and equine therapy on the farm to start a journey to recovery.

The Trust was successful in gaining \$1,200 in our last round of Community Grants, which helped sponsor a group of students from Waimea Intermediate School.

It allowed these tamariki to regain some self-esteem, lessen anxiety and build friendships. The ripple effect of the time invested in these young people is felt widely within our community.

Apply now

If your organisation is looking for financial help, we may be able to help with a Community Grant, but you'll have to hurry as applications close at the end of this month! The criteria are broad and cover a range of categories, including but not limited to service groups, festivals, and sports clubs through to welfare groups, arts, culture, heritage, and environmental organisations.

Visit tasman.govt.nz/grants.



Staff member Sarah with Toby.

Vote for your favourite Matariki art piece

We need your vote to choose the best entries in our Matariki art competition. We set a challenge for people to create an enlightening piece of artwork to mark this special event.

People were asked to create a light lantern, light sculpture or light display which encompasses the essence or a component of Matariki to be in to win a class, business, or household lunch shout!

The entries are now in, and we need your help to pick a winner.

Simply go to our Facebook page and "like" your favourites, then the photo with the most "likes" in each category by the end of the competition wins!

Voting closes at noon on Monday 17 July. To cast your vote, visit facebook.com/TasmanDistrictCouncil





The earth is moving for the Motueka Skatepark update

Progress is now eight weeks deep on the Motueka Skatepark upgrade, and despite a couple of weather-related delays, we are on track for a spring opening of the eagerly awaited facility.

The project has been in the pipeline since 2018 when a group of BMX riders asked the Motueka Community Board for something a little more extreme at the 20-year-old park on Old Wharf Road.

Following ideas and feedback from the community, a design concept was reached that catered for multiple types of use, including skaters and scooter riders and all levels of experience.

So far, earthworks have been the main activity taking place on-site, with 1,200 tonnes of gravel used in construction already and some new concreted sections and railing now in place.

Overseeing the project is one of Aotearoa's best skatepark designers, Dave North of Nelson Creek Skateboards Limited.



Dave North, Councillor Brent Maru and Vincent Sibbald.

Along with the support of local businesses and contractors, he's been busy pouring his 35-plus years of skateboarding experience into making something special for the youth of Motueka.

"There's been a few good comments coming through from the community – people are really excited to see this happen," Dave said.

The cost of the \$370,000 upgrade has been met by funding from the Council's Motueka Ward Reserves Financial Contributions, Motueka Community Board, Rātā Foundation and the Lottery Community Facilities Fund.

Another key community contribution has come from Hotel Motueka, who provided \$60,000 towards the project through New Zealand Community Trust funding.

Wakefield's newest playground opens

As we continue our tour of new playgrounds, parks and recreational facilities around Tasman, today we visit the very newest place to open for the young people of our District, this time in Wakefield.

The Genia Drive playground was officially opened a couple of weekends ago by Moutere-Waimea Ward Councillor Christeen Mackenzie.

The area has been designed as a true adventure-type park and to fit in with the adjacent native bush.

We've created features like balance beams, stepping logs, a forest walkway, as well as seating, a picnic table, plus plenty of room to kick or throw a ball around.

The unique "You and Me" swing has proven to be a hit and has the younger community members buzzing.

The community book exchange fridge is back, and apart from a few more plantings, Genia Drive Park is open for hours of fun.



Councillor Christeen Mackenzie cuts the ribbon at the opening ceremony.



Clean, green and another significant award

The plaudits keep coming for Motueka's new library. At the recent New Zealand Property Council Awards in Auckland, Te Noninga Kumu Motueka Public Library took out the excellence award in the Green Building category and a merit in the Civic and Public Buildings section.

The judges recognised the building for its construction excellence and value for money while embracing environmentally friendly values.

As well as being constructed of sustainable materials, the 256 solar panels on its roof allow the building to be self-sufficient in the use of electricity for much of the year.

Project Manager Dan Roberts from BPM Ltd says the awards are particularly

pleasing considering the project team was initially told the building couldn't be done for the estimated price.

He says not only did it come in on time, but it also came in under that budget.

This latest recognition comes hot on the heels of the library winning the Public Architecture category at the Te Kāhui Whaihangā New Zealand Institute of Architecture 2023 Local Awards in June.



Stop a pest problem in your backyard and become a volunteer

Native Bird Recovery Richmond (NBRR) is keen to expand its successful volunteer trapping efforts around the Richmond Hills and into your neighbourhood.

If you're keen to have a pest trap in your backyard, you can purchase a subsidised pest trap through our backyard trapping programme. Tasman residents can purchase subsidised traps at all our Tasman Service Centres.

Available traps are: Victor snap trap in a wooden tunnel for rats (\$15); Trapinator

traps for possums (\$20); and DOC200 traps in a wooden box for stoats, weasels and rats (\$50). There is a limit of one trap type per property.

If you wish to keep a tally of your monthly backyard trapping results and send them to NBRR, they can include them in the Nelson Tasman Conservation Volunteers Newsletter.

If you require trapping ideas or help, or would like to become an NBRR volunteer, email steve.liddicoat@xtra.co.nz.

Prosecution reiterates commitment to curbing outdoor burning breaches

The successful prosecution of a civil contracting firm and its associated business sends a strong message to those breaching outdoor burning rules.

CJ Industries Limited (CJI) and Rapid Ridge Trust Limited (RRT) were convicted and sentenced on three charges in the Nelson District Court on 26 June relating to burning in breach of the rules of the Tasman Resource Management Plan.

The charges related to the burning of materials that took place near Motueka on and around 3 June 2021, as well as a breach of an abatement notice.

CJI and RRT were each convicted on one charge pertaining to the discharge of contaminants to air, while RRT was also convicted for the breach of the abatement notice.

We consider this offending moderately serious due to the release of pollutants into

an environment where crops are harvested, and people live. As well as this, the offending was deliberate and happened after warnings and an abatement notice.

Sentencing Judge Pru Stevens said that a starting point of \$22,000 was appropriate for the discharge offending and the breach of the abatement notice. This is at the high level of fines imposed for similar offending.

For the discharge offending, a fine of \$16,500 (after deductions for good character and guilty plea) was handed down, to be divided equally between both defendants. A further \$16,500 fine was handed down to RRT for the breach of the abatement notice.

We hope the conviction will act as a deterrent for those wishing to undertake unauthorised outdoor burning and demonstrates that we take complaints seriously and enforce the rules.



G.J. Gardner. HOMES

NEW SHOWHOMES COMING SOON

48 & 50 Summersfield Boulevard, Richmond

OFFICE 195 Queen Street, Richmond
 CONTACT 03 543 9502 | 0800 42 45 46
 OPEN Monday to Friday, 9.00am – 5.00pm
www.gjgardner.co.nz

Proud to be sponsoring:
 

Is your water safe?

Get the best from your water, take the worst out of it!
 Water purification / Filtration / UV sterilisers / Water softening

Water testing service available




03 528 8888



**Has your grease trap been emptied recently?
 Keep your system healthy with an annual service.**

Grease traps / Sumps / Septic tanks / Waste oil / Hazardous waste

FREEPHONE 0800 725 326
EMAIL bookings@nmwaste.co.nz
nmwaste.co.nz



MEET YOUR REPS



Councillor Celia Butler, Golden Bay Ward

It has been a difficult time for Councillors setting the rates increase and fees and charges. This is done now, and the rates rise of 8.57% is not what anyone wanted to see.

The fact is, rates are still the main source of finance for councils, and as a unitary council, Tasman District Council is responsible for a much wider range and an increasing number of things than district councils.

Like many, I have been reflecting on this situation of high dependence on property rates which has been with us for a very long time.

The Review into Local Government is questioning where this will lead us in the future and where other sources of

funding to supplement rates should be looked for.

Opportunities to cut back on spending are very limited; many expenses such as insurance, interest rates and work that the government requires us to do, make up a big proportion of our costs. What can be cut, is cut.

However, none of this helps households now struggling to pay rates or rent rises.

An example of the Council using rates to ease the burden of costs for some is the new fare subsidy scheme for locals travelling to and from Golden Bay by commercial bus.

By the time this is printed, Matariki will be upon us, and the twinkling stars will be with us for another season.

BOARD'S BUSINESS



Motueka Community Board

There have been some recent questions about how our community can engage with the Motueka Community Board, either formally or informally.

Formally, members of the community can request to speak at the Board's monthly meeting by registering as a presenter at the public forum. This provides people with the opportunity to address the Board for up to five minutes on matters relevant to the Board's delegations.

To register to speak at a Community Board meeting, please contact the Board Secretary: emma.gee@tasman.govt.nz.

Individual contact details for each Community Board member can be found

online at tasman.govt.nz, or you can email motuekacommunityboard@tasman.govt.nz.

Often individual Board members are contacted by residents, and we are happy to meet with you and utilise the small meeting space at the Motueka Library as a central meeting space.

The Board has a Discretionary Grant Fund available for projects within the Motueka Ward that demonstrate a clear benefit to the community, including addressing an identified community need.

There is a \$700 maximum amount for applications for projects. You can get an application form and further details by emailing the Board Secretary at emma.gee@tasman.govt.nz.

WHAT'S ON IN TASMAN



Community planting days

- **Sunday 16 July, 9.00 am – 1.00 pm, Bronte Peninsula. Access from 50 Bronte Road East, park on the road.**
- **Sunday 23 July, 9.00 am – 1.00 pm, Cardno Way, Bronte Peninsula North. Park on Cardno Way.**

Join the Battle for the Banded Rail in their community planting efforts. Everyone is invited! Please bring gloves, a spade and drinking water. Wear solid footwear and clothes suitable for the weather conditions. Morning tea is provided. For more information, email Kathryn at bandedrail@gmail.com.

Wellby Talking Café

Wednesday 19 July, 10.00 am – 11.30 am, Motueka Library.

Everyone is welcome for a relaxed cuppa to start your journey connecting with others who enjoy the same things. Pop in for a quick chat or stay for a longer conversation with friendly people. No need to register, just turn up.

Sarau Winter Sale

Saturday 22 and Sunday 23 July, 11.00 am – 3.00 pm, Moutere Hills Community Centre.

It's your chance to choose a new wardrobe, discover enough books to last you for a year and enjoy hot soup, coffee and a scone. There will also be a section with old books and china. The weekend is entirely voluntarily run to raise funds for the Sarau Community Trust.

Coming soon: new free e-resources through Tasman District Libraries

For access, all you need is your library card and PIN.

Carter's Price Guide to Antiques: Find price guides on art, antiques, and antiques, sourced from actual auction sales in Australia and New Zealand.

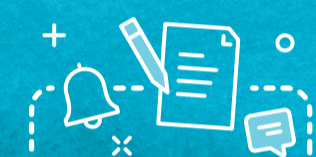
Bridget William Books New Zealand History Collection: Learn about the history of Aotearoa New Zealand and its people with these award-winning biographies and e-books on New Zealand history.

Bridget William Books Texts Collection: Short books on big subjects. This collection of e-books covers the big issues facing New Zealand today, as well as presenting new views on our history. Topics range from climate change to decolonisation, and poverty to digital ethics.

New Zealand Geographic – NZ Geo TV and NZ Geo VR: Watch award-winning natural history documentaries, swim with the dolphins or explore our beautiful landscapes with 360-degree high-definition virtual reality videos.

LOTE 4 Kids: Over 1500 e-books for children in over 50 languages, including te reo Māori and New Zealand sign language (this is still in development). Read or listen to stories in their original language or translate them into English.

NEWSLINE NOTICES



Moturoa / Rabbit Island – Nelson Marlborough Fish & Game pheasant hunt

Public access to the eastern half of Moturoa / Rabbit Island will be closed for three organised game bird hunts this winter. The closure will include all the beach front at the eastern end. The last of these hunts will take place on Saturday 15 July, 7.00 am – 2.00 pm (Sunday 16 July reserve day).

Fish & Game organise the hunts, which are permitted under the Moturoa / Rabbit Island Reserve Management Plan. The hunts are timed to coincide with low tide to avoid any effect on shore birds. For more details, contact Jacob Lucas at Nelson Marlborough Fish & Game on 03 544 6382.

Vegetation control – roadside spraying

Local roads

We are responsible for the chemical and mechanical control of vegetation within the road reserve. Chemical control is split into two main activities, the control of vegetation around roading infrastructure and dealing with invasive pest plant species.

This includes the use of knock-down and residual herbicides to remove problematic vegetation growing in the road reserve and around street furniture. The active herbicides authorised under our resource consent are norflurazon, oryzalin, simazine, terbutylazine, glyphosate, metsulfuron, haloxyfop, triclopyr and picloram/triclopyr. Treatment methods are foliar and basal spraying.

Residents can request their rural or peri-rural property frontage not be chemically sprayed and instead undertake the vegetation control themselves. If you wish to apply for your property to be

added to the "no spray" list, please contact Nikki Shepherd on 03 543 7234 or nikki.shepherd@tasman.govt.nz.

State highways

Waka Kotahi contractors undertake a vegetation control programme to ensure roadside vegetation does not affect the safety or operation of state highways.

This programme includes the spraying of chemical herbicides including the following active ingredients: glyphosate, metsulfuron, terbutylazine and triclopyr.

You can register your property as a 'no spray' zone, which requires a commitment to maintain a property's highways frontage to specifications provided by Waka Kotahi, by contacting Mitch Hutchings on 03 373 2036 or mitchell.hutchings@wsp.com.

Join the Citizens Advice Bureau

The Citizens Advice Bureau Nelson Tasman is looking for new volunteers! As more services go online, call centres go off-shore and printed forms and information are reduced, CAB provides an important people-centred service for folk who prefer talking things through.

They will be running training for new volunteers at the start of August. If you're interested, reach out to CAB before Friday 21 July on 03 548 2117 or nelsontasman@cab.org.nz.

Council hui

Meetings will take place in person and via Zoom. For details and the Zoom link visit tasman.govt.nz/meetings-calendar. Unless otherwise stated, all meetings will be held at Council Chambers, 189 Queen Street, Richmond.

Motueka Community Board

Tuesday 18 July, 4.00 pm.
Motueka Library, Wallace Street.

Tasman District Council
Thursday 20 July, 9.30 am.

Surveying and Resource Management

- Subdivision Design and Management
- Resource Consents and Planning
- Land Development Engineering
- Project Management



81 Selwyn Place, Nelson
Phone 03 548 4422
staigsmith.co.nz

STAIG & SMITH[™]
ENHANCING THE LAND