



© L McGlinchey

What does a wonderful Waimea River Park look like?

We have begun the process of reviewing the Waimea River Park Management Plan.

We own and manage the land alongside the Waimea River and the lower reaches of the Wairoa and Wai-iti Rivers.

While the land is primarily owned for river control and soil conservation purposes, we also take an interest in outcomes such as conservation, historic resource protection, public recreational use, and commercial activities.

In response to community enthusiasm for the area to be managed for broader objectives, we recognised the area as a park in 2010 and created a management and development plan.

A lot has changed in the years since and we want to make sure any updated plan considers and incorporates further improvements to the walking and cycling network, and builds on

restoration work carried out under the Government 'Jobs for Nature' projects and the Waimea Community Dam mitigation funding.

Most importantly, we need to consider the implications of the expected increased frequency and severity of extreme weather events, such as droughts and floods, in the future management of this area.

We are keen to hear what you think about the issues and opportunities in the park. There is an opportunity for you to provide ideas and suggestions before the plan is developed, as well as a formal opportunity to submit on the draft plan when it becomes available in 2025.

Visit shape.tasman.govt.nz/waimea-river-park where you can pin your ideas on the map, fill out the online survey or upload a document. Be sure to have your say by Sunday 18 August.

PARKS AND PLACES



You told us – Tasman loves their libraries!

It's very easy for us to talk up the value of our libraries.

Whether you're visiting Tākaka, Te Noninga Kumu (Motueka), Richmond or Murchison – there's something on our shelves and spaces for everyone to broaden their knowledge, social circle or literary arsenal.

One of the extremely pleasing aspects of our recent 10-Year Plan public engagement was receiving over 100 comments within submissions that highlighted how our libraries are providing some positive value to the young and old.

Here's just a few examples that jumped off the page:

- The staff and books are a taonga for our community.
- It is a free place for people to gather together, share and learn. This is most important in these uncertain times when a lot of people are struggling financially and with their mental health.
- With the increasing cost of living, access to core library services such as

internet provision, training in basic digital skills and meeting information needs become more essential to ensure all Tasman District's residents can participate in our society.

- The local libraries provide a safe, warm and dry place for people to engage in learning, leisure, meeting new and old friends, and having work meetings.
- It's such a welcoming space with friendly, helpful staff. Just what our world needs more of.
- A large proportion of the community doesn't have a marae or sports club for example, but everyone can use the library in a whole variety of ways. It sets a great example of the importance of life-long learning.

It makes us so proud to know we're providing services and space that brings joy and connection to our communities. Thanks for your support – please come and visit us soon.



Winter planting adds to Kingsland Forest's cool improvements

The winter planting programme for Kingsland Forest started this month. Between now and the end of August, we're aiming to plant 44,000 native trees mostly in areas harvested in 2023 and within the Lodestone and Jimmy Lee Creek catchments/gullies.

Contractors will be working on the hill and there will be a lot more vehicles coming in and out of the forest for the winter period.

There will also need to be closures of tracks at certain times when there is a risk of falling debris when planting crews are working above some tracks. These will be signposted, and we will let people know via the Antenna app – download it for free from the app store on your phone.

There will be sections of the Terminus MTB Track that will have signage posted to warn mountain bikers about contractors working on and around the track.

The planting programme complements the wider works that we're carrying out to improve the Kingsland hillside and its surrounds.

This year, we've installed three new park benches at the Fowler, Henry and Heaton Road Skid sites – with the help of Keep Richmond Beautiful – as well as putting in a toilet facility later this year.

We have also installed 10 new way-finding signs around the forest park at the main entranceways and strategic locations.

Big thanks must go to our volunteers, our planting contractors and Titoki Nursery, and the contribution of the Government's Better Off Funding in enabling this work to move ahead.



Show us the money!

Looking for funding for your community group or organisation but not sure where to start? What does it take to apply for grants? Who do you speak to? What's the process?

Together with the Department of Internal Affairs, Nelson City Council, Te Pūtahitanga o Te Waipounamu, and Rātā Foundation, we're running a series of drop-in events so you can learn what funds are available, how to apply, and find out about other resources available.

You'll be able to speak to staff from these organisations about your projects to find out how funding may help you and your group make a difference in our community.

If you want tips about making a good funding application or help with your application form, then this session could also be useful to you.



The sessions are;

- Monday 1 July, 10.00 am – 12.00 pm, Motueka Community House
- Tuesday 2 July, 10.00 am – 12.00 pm, Murchison Recreation Centre
- Tuesday 9 July, 10.00 am – 12.00 pm, Age Concern, 62 Oxford Street, Richmond
- Wednesday 10 July, 10.00 am – 12.00 pm, Golden Bay Rec Park Centre

These events are free, open to everyone, and you don't need to register.

For more information, contact Lani Evans – lani.evans@tasman.govt.nz

Bike Hub Nelson launches bike maintenance courses



Responding to strong public demand, Bike Hub Nelson is offering bike repair and maintenance courses.

Bike Hub Nelson is a charity based at Saxton Field that fixes donated bikes and makes them available to the community on a koha basis. The charity is supported by us through Community Grants.

Coordinator Matt Lawrey says the first round of beginner and intermediate workshops sold out and the Hub is thrilled to be able to offer another round.

"Every week we get people asking us if we're offering people the chance to learn how to maintain and fix bikes, and it feels really good to be able to meet that need," he says.

The next beginner course is being held over three weeks at the Hub's workshop

starting on Monday 1 July and running from 1.30 pm – 3.00 pm. The course costs \$45, and covers things like pre-ride checks, how to look after your bike, how to remove a wheel, replace an inner tube, basic brake care and chain repairs.

The intermediate course includes skills like changing and aligning disc brakes, tuning gears, maintaining the drive chain, replacing spokes, truing wheels and replacing cables. This costs \$60 and is being held over four weekly sessions starting on Tuesday 2 July and running from 7.00 pm – 8.30 pm.

Places are limited to six per course and participants are welcome to bring their own bikes along to work on them.

To register, email bikehubnelson@gmail.com.

Grant boosts Māpua book stocks

When the weather's cold or wet it's nice to snuggle down with a good book and get lost in another world for an hour or two.

We have several well-stocked libraries across Tasman District and thanks to one of our Community Grants, the Moutere Hills RSA Memorial Library, also known as the Māpua Library, can continue to provide borrowers with some of the very latest titles.

Last year, the community group received a \$2,000 grant which has helped keep the shelves stocked with new books.

Library volunteer Belinda Caulfield says the grant application process is very straightforward and applicants are guided through it on the Council website.

Her advice to others considering making a grant application is to provide plenty of background about your group and clearly lay out what you do.

Belinda says to reinforce an application it's helpful to show the dollar value of all the hours of volunteer workers.

The Māpua Library building was donated by the Moutere Hills RSA.

Belinda says the library is a community asset and provides more than just books, and everyone, even non-residents, is welcome to join.

She says they provide tutors for English as a second language courses, there are regular visits by school and pre-school students with story readings and they also host regular art exhibitions.

If your group wants to apply for a Community Grant, head to our website tasman.govt.nz/grants before Wednesday 31 July.



Coming to a park near you

Back by popular demand and coming to a park near you is the second round of our highly popular Family Event Series.

Last school holidays, hundreds of people, young and old, joined us and organisers CLM in tonnes of organised fun in local parks and reserves. Write these dates on the calendar so you don't miss the action.

On Monday 8 July head for Māpua Playground for a treasure hunt.

Next on the list is Thursday 11 July at Brightwater Recreation Reserve where you can get into the treasure hunt.



Washbourn Gardens is the place to be on Sunday 14 July for an amazing race.

... and last but by no means least, is Friday 19 July when the action comes to Richmond's Ben Cooper Park, and you can be part of the treasure hunt.

All events run between 12.00 pm and 2.00 pm and will have the activities trailer for fun for all ages. Brought to you in association with our partners Events by CLM.

PARKS AND PLACES



Artists officially open Richmond parklet

Richmond's newest place to take a bit of time out was officially opened with a small ceremony a couple of weeks ago.

Doing the honours and cutting the ribbon were four young artists from Garin College – Easton Dowell, Riley Stuart, Jessie Henderson and Coco Bella Monopoli – who designed the colourful artworks for the Queen Street parklet outside the shops in Upper Queen Street.

The space is designed to create a pleasant sitting area and includes a timber decked area, seating, shade, and plantings.

The plantings include delightfully fragrant Michelia and climbers that will help provide shade once they're established.

Bicycle racks are also due to be installed.



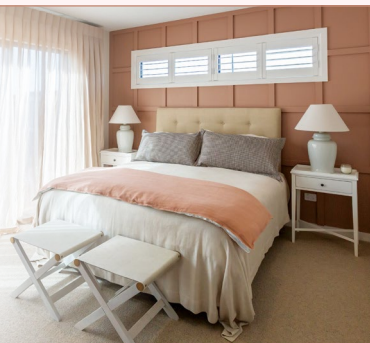
G.J. Gardner. HOMES

NEW SHOWHOMES OPEN 1PM – 4PM DAILY

48 & 50 Summersfield Boulevard, Richmond



Proud to be sponsoring: OFFICE 195 Queen Street, Richmond
CONTACT 03 543 9502 | 0800 42 45 46
OFFICE OPEN Monday to Friday, 9am – 5pm
www.gjgardner.co.nz



Sumps, interceptors...

Regular cleaning and removal of sediment and contaminants is essential. Join our Regular Service Scheme.

Grease traps / Sumps / Septic tanks / Waste oil / Hazardous waste

FREEPHONE 0800 725 326

EMAIL bookings@nmwaste.co.nz

nmwaste.co.nz



Adaptations made on Aranui

Improvements have been made to the Māpua Streets for People project, based on feedback from users and residents, following a nine-month pilot layout.

To clarify the new layout, the shared path on the northern side of Aranui Road has been reconfigured. It is now a footpath for pedestrians, and a one-way cycle lane towards the wharf (with directional arrows).

Additionally, the new path beside Aranui Park has been extended towards the Fruit and Vege Shop.

One concern from the preliminary user survey was the high vehicle speeds along Aranui Road.

Our research shows that the Streets for People initiative has successfully reduced average speeds from 39.8 km/h to 28.6 km/h near Māpua School, and from 39.8 km/h to 33.6 km/h in the village centre.

In response to community feedback, the planter boxes have been removed. These have been replaced with yellow no-stopping lines so that good visibility between the road and footpath at driveways and pedestrian crossings is kept.

The planter boxes have been repurposed to a few community groups within the village. They now provide a safer separation between the car park and bicycle storage area at Māpua School and are also being used by the Hill Community Church and Māpua Playcentre.

Lights, sirens, action!

What do you do when you see the flashing lights of emergency services up ahead or in your rear vision mirror?



A bunch of young Richmond drivers learnt exactly what to do one evening earlier this month at Moturoa/Rabbit Island.

Thanks to the involvement of NZ Police, Hato Hone St John, and Fire and Emergency NZ, and coordination from our Road Safety Coordinator, the drivers from Waimea College experienced how to respond to emergency vehicles and interact with personnel.

The hands-on practical course included.

- What to expect when emergency vehicles approach.
- Responsibilities when emergency vehicles approach.
- How to let emergency vehicles pass when en route to a job.
- Random breath testing interactions and simulations.
- Safe practices when dealing with emergency situations.

- What to do when being pulled over by emergency personnel.
- Understand your responsibilities when interacting with emergency personnel.
- Important tips for staying safe on the road.

After a short on-site briefing where police talked about the dos and don'ts of emergency vehicle interactions, the learners then took their own vehicles, with supervisors in the car, on a pre-determined course on Moturoa/Rabbit Island.

They then ran through the various scenarios as they came across them.

This first-ever Learner Driver Night was a tremendous success and thanks to input from all groups involved it is likely to be repeated and available to other young drivers.

Waste matters!

Every day, millions of things that can be reused or recycled are thrown away, but we want to change that.



To seriously address climate change, we all need to take significant steps forward in our approach to waste.

We have started the review of our shared waste plan with Nelson City Council. This will be our opportunity to rethink waste, not just how we manage it, but how we reduce it and even avoid creating it in the first place.

To make these changes, we are all going to need to work together.

Over the next few months, we'd like your ideas on what our focus should be. There will be a formal consultation on a draft plan early in 2025, but meanwhile, this is your opportunity to tell us what you think matters.

We've put together a few questions for businesses and organisations in a quick survey to get the conversation started, and there's also another section for individuals to answer the question "What should our focus be for our shared waste plan?" – visit shape.nelson.govt.nz/rethink-waste to share your thoughts.

The government waste levy is increasing which means waste disposal will cost more for all of us and we want to see valuable resources kept out of landfill.

Waste is everyone's problem, and we all have a role to play in the solution. The little things we can all do will, together, make a big difference.

Out of Africa pest plant a thorn in our side

Boxthorn (*Lycium ferocissimum*) is an evergreen pest plant, originating from South Africa. Boxthorn was originally introduced as a hedge but has revealed itself to be a significant pest elsewhere.

Tasman is one of those places. It is an Eradication Pest in the Tasman-Nelson Regional Pest Management Plan.

It can form dense, tall prickly stands that exclude native plant species, and can also entangle seabirds such as petrels.

The thorn pines can become embedded in bone or soft tissue, causing infection and pseudo-tumours.

It tolerates drought, wind, salt and extremes of temperature, and will colonise rocky cliffs, roadsides, gravel and coastal areas.

The tough, woody stems of boxthorn branch off at square angles, creating the distinctive box-like pattern it is named for. Branches harbour sharp, rigid spines, an adaptation against browsing by African ungulates.

Boxthorn leaves are hairless, fleshy and usually bright green. They are oblong shaped, but wider towards the tip, around 4cm long and 1cm wide.

From July to March, white to pale mauve flowers are produced, around 1cm long. These result in tear-shaped orange-red berries in autumn, which are spread mainly by birds. We have recently discovered that goats also spread boxthorn by browsing on the plant and fruits.

If you think you have seen this pest plant, please contact our Biosecurity Team on 03 543 8400 or biosecurity@tasman.govt.nz.



THINK PLAN DO

Engineers / Surveyors / Planners

Land Surveying / Resource Management
Environmental Science / Geotechnical Engineering
Civil and Structural Engineering

Level 1, 42 Oxford Street
Richmond 7020
0800 999 333

nelson@do.nz
www.do.nz

do DAVIS OGILVIE
ENGINEERS / SURVEYORS / PLANNERS



Zoe Bond PARTNER

Providing practical property, business, estate planning and trust advice.

03 543 8301 | zbond@fvm.co.nz | fvm.co.nz
265a Queen Street, Richmond



FLETCHER VAUTIER MOORE
LAWYERS



A cool way to thank our Motueka River Stopbank Project partners

In the last Newsline issue, we told you about the successful completion of the Motueka River Stopbank project – a three-year programme of works to enhance flood protection measures across 10 sites covering a five-kilometre section of the Motueka River.

The refurbishment improves the integrity of the stopbanks and provides safer access for ongoing maintenance. It also offers reassurance to our businesses and regional economy.

Earlier this month, we officially acknowledged the completion milestone with an event held on the Whakarewa Street section of the stopbanks.

A mix of Council staff, local iwi, contractors, designers and other key stakeholders came together to bless the newly completed project, and share stories and kai.

Despite the chilly day, it was a great opportunity to thank those directly involved in delivering this, from our iwi partners to the crew at Taylors Contracting, who have navigated Covid disruptions and weather events that have tested the stopbanks to get the job done.

We also received some wonderful feedback from the community about how the improvements will make the Motueka River more resilient to future floods.

Thanks to everyone who has supported this project to reach an extremely positive outcome.

Golden Bay Community Board

The Golden Bay Community Board recently had the opportunity to have a meeting with Maureen Pugh, our local Member of Parliament. The purpose of the meeting was to introduce ourselves and establish a relationship with Maureen, where we could communicate any needs or issues that the Golden Bay Community had.

During the meeting, we discussed various issues affecting the Golden Bay community, including affordable housing, roading issues including the corner at Motupipi Street and SH6, and the speed limit through the Onekaka community. Another point raised was the bridge over the Motueka River, and the limitations of this bridge.

The Board also raised their high level of concern over the proposed fast-track bill and the detrimental effect that this would have on Golden Bay if mining were allowed. Maureen's response to the Board's mining concerns was that until the methodology for the extraction is known, or if it even goes ahead, people

are only assuming what could happen, and none of those assumptions are based on facts before us.

These discussions enabled us to identify common goals and areas where we can work together to benefit the community.

The meeting proved beneficial in establishing connections between the community and Maureen's office. It also demonstrated the importance of community engagement and the value of building relationships with our representatives. We are optimistic about the potential outcomes of this newfound connection and are grateful for Maureen's commitment to our community.

WHAT'S ON IN TASMAN



Wellby Talking Cafés

- **Wednesday 3 July, 1.30 pm – 3.00 pm, The Wholemeal Cafe Tākaka.**
- **Tuesday 9 July, 10.00 am – 11.30 am, Tapawera Community Centre.**
- **Tuesday 9 July, 1.30 pm – 3.00 pm, Richmond Library.**

Come along for a relaxed cuppa to start your journey connecting with others who enjoy the same things. You can pop in for a quick chat or stay for a longer conversation with friendly people. No need to register, just turn up on the day.

Community planting day

Sunday 7 July, 9.00 am – 1.00 pm, Cotterell Road. Park roadside at the end of Cotterell Road.

Join the Battle for the Banded Rail in their community planting efforts. Everyone is invited! Please bring gloves, a spade and drinking water. Wear solid footwear and clothes suitable for the weather conditions. Morning tea is provided. For more information, email Kathryn at bandedrail@gmail.com.

Bar-tailed godwits talk

Wednesday 3 July, 5.30 pm, Richmond Library.

Summer visitors to the Waimea Inlet, bar-tailed godwits undertake the longest non-stop migration of any bird species.

David Melville from 'Birds New Zealand' will speak about these extraordinary birds, some of the challenges they face from habitat loss and degradation, and encouraging efforts being made around the Yellow Sea to conserve the remaining habitat.

Winter school holidays at the libraries

Tuesday 9 July – Thursday 18 July, all Tasman District Libraries.

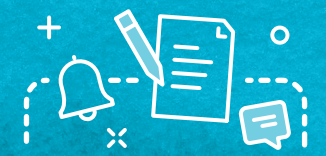
The children's team look forward to facilitating engaging activities for your children over the winter school holidays. The theme is Te Rangi (the sky), and activities will include craft and Lego® fun programmes. For more information, please visit our website, tasmanlibraries.govt.nz.

Lunch and learn – digital safety for you and your workplace

Wednesday 3 July, 12.00 pm – 1.00 pm, Māpua Community Hall.

Cyber risks can easily creep into our daily lives and cause problems for us, our business, and our customers. It makes sense to put some effort into making your work habits, systems, and devices as secure as they can be. In this talk, Melonie Cole from Mindshift covers some top tips for leading a safer online life. A free event run by Business Assist and the Māpua District Business Association. Visit mapua.co.nz/e to sign up.

NEWSLINE NOTICES



Proposed temporary road closure



Applicant: Nelson Car Club.
Event: Dovedale Hill – Phil Fiddymont Memorial Rallysprint.
Location: Pigeon Valley Rd / Dovedale Rd.
Date and time: Saturday 26 October 2024 between 9.00 am and 5.00 pm.
Objections close 5.00 pm, Friday 9 August 2024. Please send any objections to rania.brown@tasman.govt.nz.

Calling Tasman's unsung heroes!

If you know someone who works tirelessly in our Tasman communities with little recognition or reward, please get in touch and nominate them for one of our Outstanding Community Service Awards.

Nominees must be residents of Tasman District and have been involved in a range of voluntary activities for 20 years or more. Head to our website – tasman.govt.nz/community-awards – or one of our service centres to fill out a nomination form by 31 August.

Get in quick for arts funding

Our Creative Communities Scheme has funding available to help groups and individuals with arts projects in Tasman – anything from music, theatre, festivals, mural painting, outdoor sculptures, art in public spaces, kapa haka, singing, art workshops and more. Funded by Creative New Zealand, the Creative Communities Scheme is designed to support opportunities for communities to participate in the arts. Visit tasman.govt.nz/creative-communities to find out more and apply by Wednesday 10 July.

Council hui

Meetings will take place in person and via Zoom. For details, the Zoom link and recordings of previous meetings visit tasman.govt.nz/meetings-calendar. Unless otherwise stated, all meetings will be held at Council Chambers, 189 Queen Street, Richmond.

Golden Bay Community Board
Monday 1 July, 1.00 pm. Collingwood Fire Station, Elizabeth Street.

Nelson Tasman CDEM Coordinating Executive Group
Wednesday 3 July, 2.00 pm. Emergency Operations Centre, 28 Oxford Street.

Joint Committee of Nelson City and Tasman District Councils
Tuesday 9 July, 9.30 am. Nelson City Council, 110 Trafalgar Street.

Audit and Risk Committee
Wednesday 10 July, 1.00 pm. No public forum.

Regional Pest Management Joint Committee (RPMP Deliberations)
Thursday 11 July, 9.30 am. No public forum.

Strategy and Policy Committee
Thursday 11 July, 1.00 pm.

