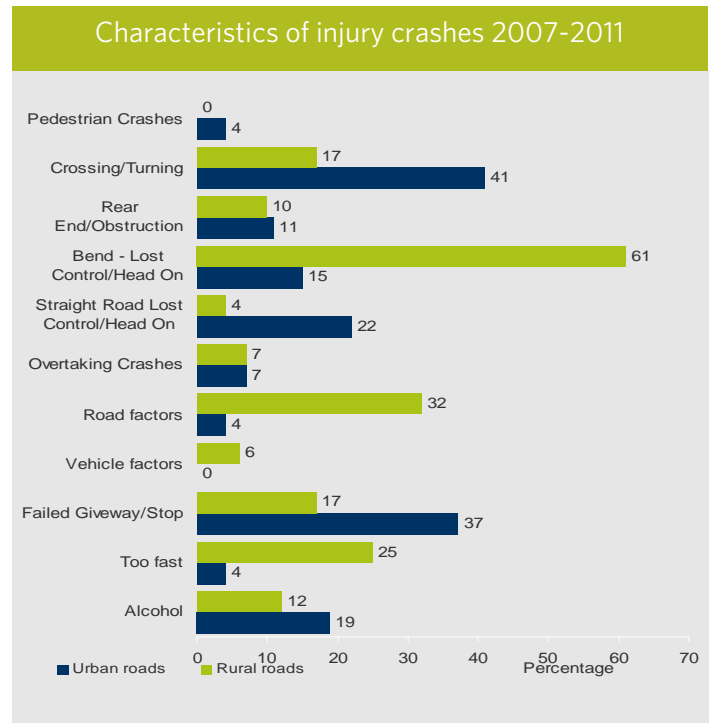
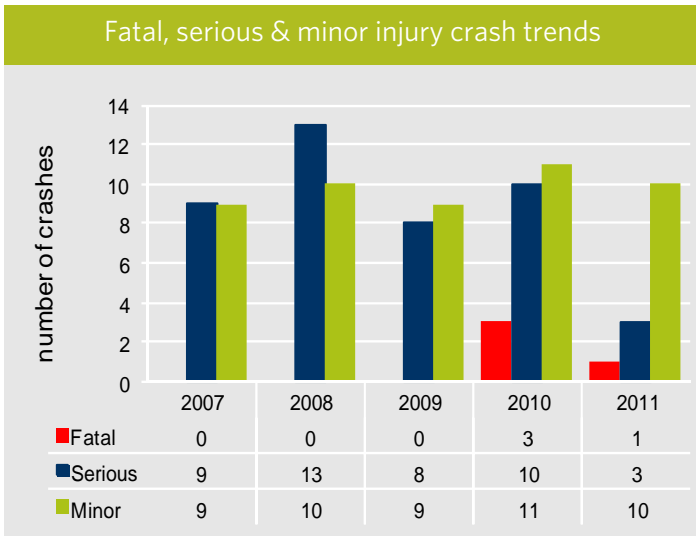


briefing notes crash analysis

a Safe System approach

Motorcyclists - Tasman District

Increasing the safety of motorcyclists is a high strategic priority identified in Safer Journeys. Locally this issue is of concern due to the number of deaths and/or serious casualties, which reflects a high level of collective risk, and also when viewed against the local road use (VKT), which reflects a high level of personal risk.



Further information about motorcyclist injury crashes locally in 2007-2011:

Local roads

- In 56 crashes 3 deaths, 27 serious injuries and 36 minor injuries

Safe Speed

- Speed too fast for the conditions - 20 percent

Safe Use

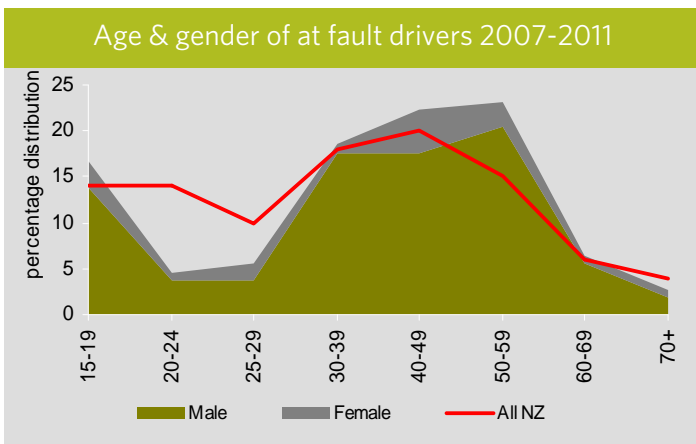
- Young drivers - 30 percent
- Alcohol & drugs - 14 percent

Safe Roads & roadsides

- Rural roads - 61 percent
- Intersections - 27 percent

Safe Vehicles

- Motorcyclists - 100 percent
- Trucks - 0 percent



State highways

- In 40 crashes 1 death, 21 serious injuries and 24 minor injuries

Safe Speed

- Speed too fast for the conditions - 18 percent

Safe Use

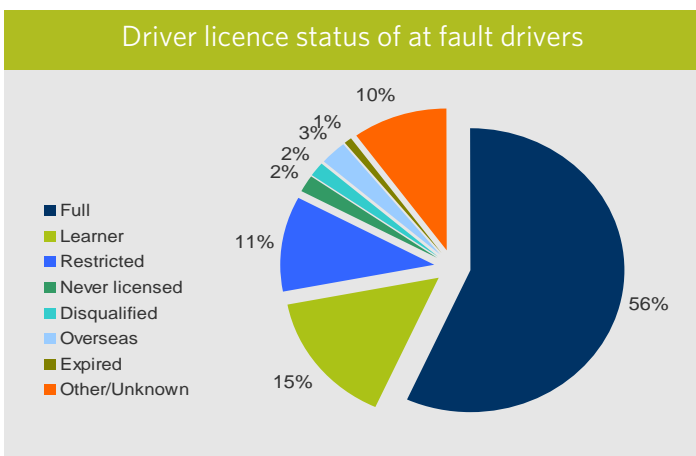
- Young drivers - 9 percent
- Alcohol & drugs - 13 percent

Safe Roads & roadsides

- Rural roads - 88 percent
- Intersections - 33 percent

Safe Vehicles

- Motorcyclists - 100 percent
- Trucks - 5 percent



Motorcyclists - Tasman District 2007-2011

