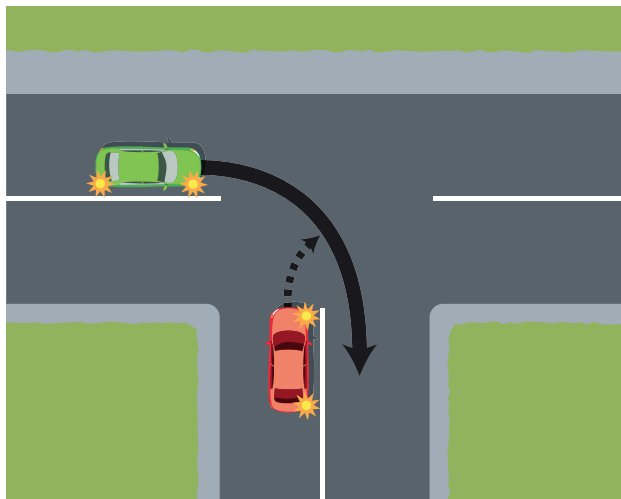


The new rules
come into
effect at 5am
on Sunday
25 March 2012

Two give way rules are changing

To make our roads safer, two of the give way rules are changing. These changes will affect all drivers, riders, pedestrians and cyclists. Remember to share the road, obey all road signs and signals, and make sure you know the new rules.

Top of the 'T' goes before me



When you're turning right from the bottom of a T-intersection with no signs or signals, you will need to give way to all vehicles at the top of the T.

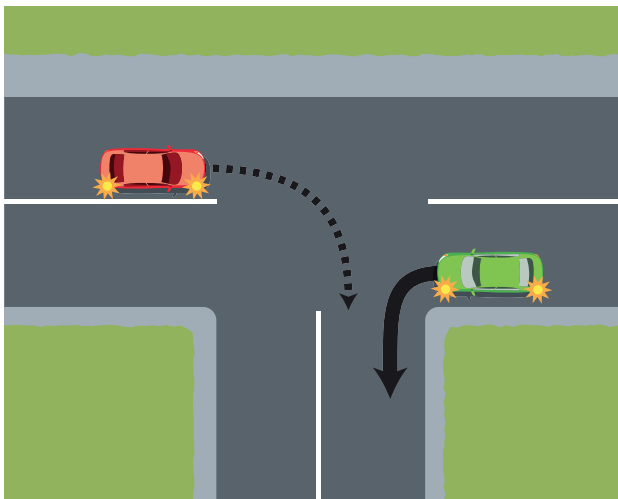
So at all T-intersections and driveways, including public driveways such as at a supermarket or hospital, think 'Top of the T goes before me'.

Learn the new rules at
www.giveway.govt.nz
or call 0800 656 055

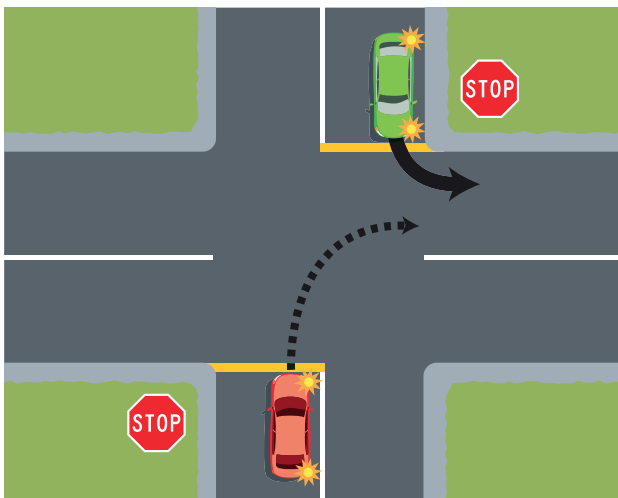
If you're turning right, give way

This rule will apply at intersections where two vehicles are facing no signs or signals, or the same signs or signals. You will need to give way to left turning vehicles coming from the opposite direction if you are turning right.

No signs or signals



Same signs or signals



(In all these images the red car gives way.)