

# STAFF REPORT

**TO:** Chairman and Members Engineering Services

**FROM:** Development Engineer, Dugald Ley

**DATE:** 10 May 2010

**SUBJECT:** **DEVELOPMENT/CUSTOMER SERVICE – THREE-MONTHLY REPORT – JANUARY TO MARCH 2010 – RESC10-05-04**  
Report prepared for meeting of 27 May 2010

---

## 1 PURPOSE

This report highlights developments and service requests administered by the Engineering Department.

## 2 SUBDIVISION (Generally larger subdivisions)

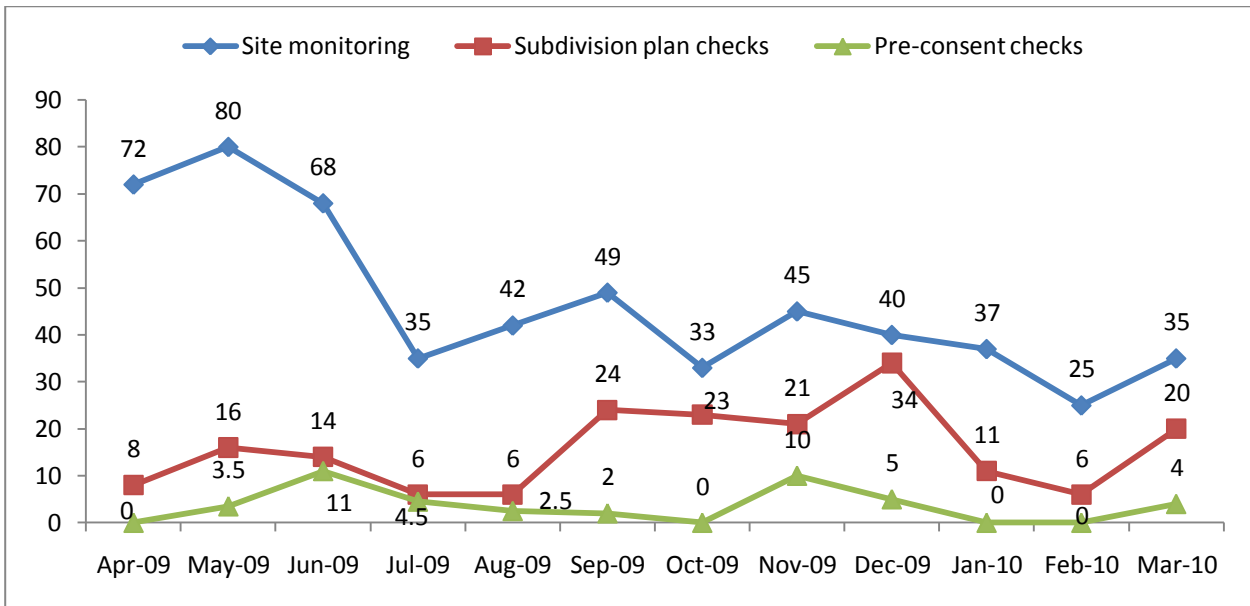
Construction works underway over the past three months include:

- Coastal Highway
- Te Maatu subdivision - Motueka
- VPCL – Lower Queen Street/Headingly Lane
- Champion Road (eastern end, 2 areas)
- New Haven – Marahau
- Eight-eight Valley
- Old Coach Road

There are a number of sections being marketed at present. Some developers are reluctant to commit more sections to the market.

### **Graph 1 – Hours spent on resource consents by Council’s engineering staff and consultants**

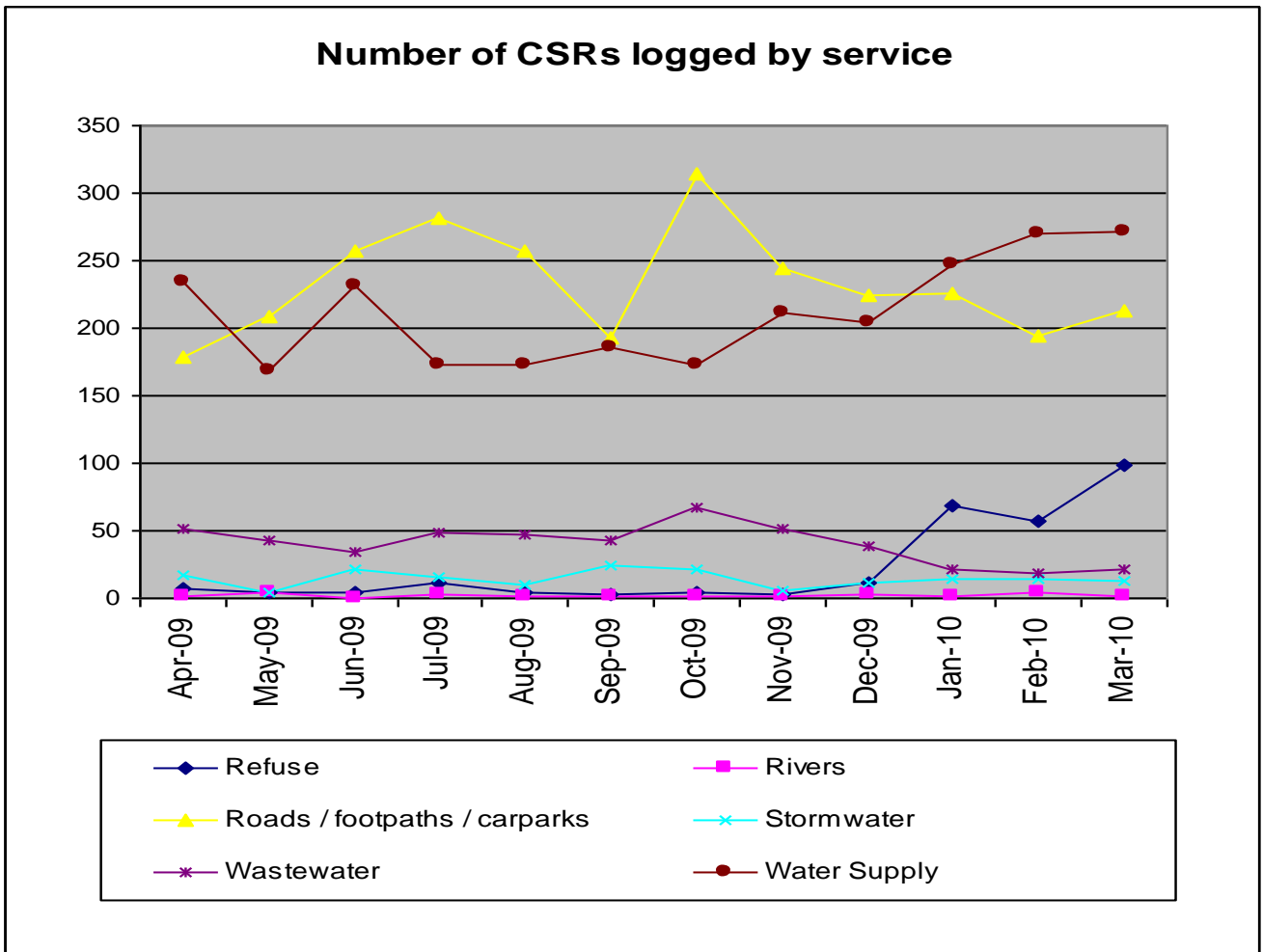
The graph below provides an indication of time spent on various subdivision activities within the district and reflects the low activity over the winter months with increasing work as the construction period commences.



### 3 SERVICE REQUESTS

The graph below indicates the service requests over the last twelve months. On average 400-500 requests were received per month.

	Refuse	Rivers	Roads/ footpaths/ car parks	Stormwater	Wastewater	Water supply	Totals
<b>2009-04</b>	7	2	179	17	52	235	492
<b>2009-05</b>	4	5	209	5	43	168	434
<b>2009-06</b>	5		257	21	35	232	550
<b>2009-07</b>	11	3	145	16	49	173	397
<b>2009-08</b>	5	2	133	10	47	173	370
<b>2009-09</b>	3	2	107	24	43	186	365
<b>2009-10</b>	4	1	123	22	67	173	390
<b>2009-11</b>	3	1	96	6	51	211	368
<b>2009-12</b>	12	3	85	11	39	204	354
<b>2010-01</b>	68	2	226	15	21	247	579
<b>2010-02</b>	57	4	195	15	18	270	559
<b>2010-03</b>	98	2	213	13	22	272	620



The table shows that water and roading are again the highest activity areas for complaints/enquiries.

#### 4 RECOMMENDATION

**THAT the Development/Customer Services – Three Monthly Report January to March 2010 be received.**

Dugald Ley  
**Development Engineer**