

# STAFF REPORT

**TO:** Community Services Committee

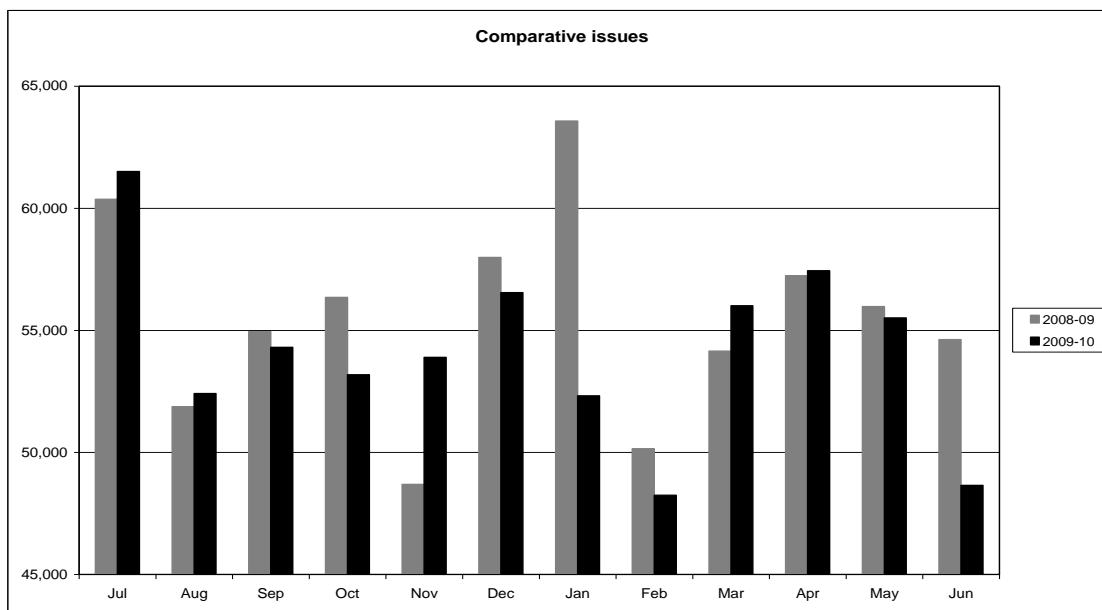
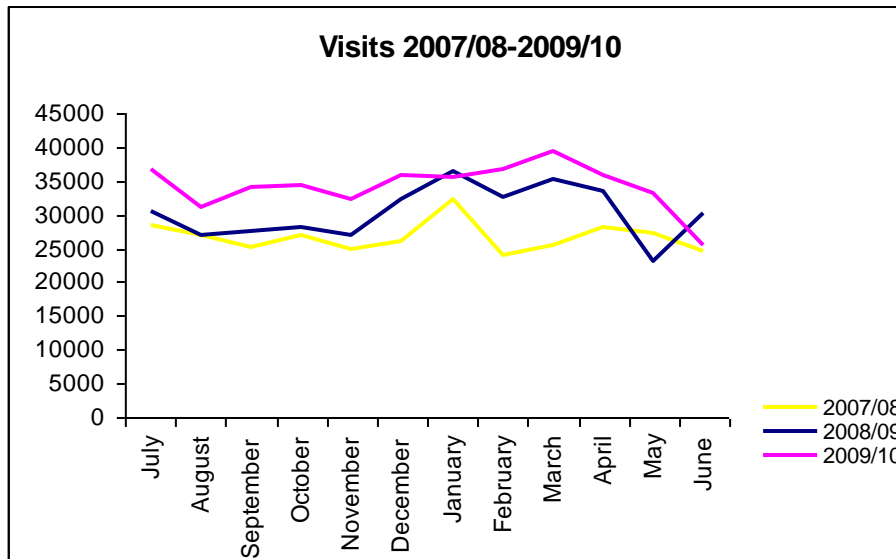
**FROM:** Libraries Manager

**DATE:** 30 June 2010

**SUBJECT:** Libraries Manager's End of Year Report – RCS10-07-07

---

## TRENDS



The libraries have experienced 47,000 more visits (around 150 per day) this financial year compared to last year. Issues overall are down 2.9% although adjusting for the 17 days of

closure at Richmond shows a nil movement. With stock in storage, and noise, dust and fumes at Richmond for most of the year it's a very good outcome.

## **HIGHLIGHTS 2009-10**

### **Richmond Building Project**

The Richmond Building Upgrade is now completed, after a year of building and extra staff workloads. The finished product is receiving extremely positive feedback from our users.

### **LMS - Library Management System**

As part of the national initiative, we are well on the way towards gaining a shared Top of the South library software which will form the basis for easier collaboration over the coming years, and allow for a number of IT improvements to our systems and services.

LSyncNZ has now been renamed "Kōtui" which carries the meaning of interwoven, stronger together. The RFP brief for the National system has been developed with a lot of input from our Digital Services Librarian, Nick Allred, and our Customer Services Librarian, Glennis Coote. Both have put in many extra hours, at a time when they were already stretched with the Richmond Library project, and deserve our gratitude for doing such a fine job.

### **Inaugural Library Literature Quiz**

Motueka and Takaka Libraries worked together and held a very successful Library Literature Quiz for Year 5 and 6 children. With great sponsorship from New World and Take Note, and the Memorial Hall as the venue, 25 teams participated at Motueka, and the winner was the *Mapua Crocodiles*. Seven teams competed at Takaka and it was won by the *Cobras* from Central Takaka Primary School. There was great excitement among the schools and many of the teachers have reported that the children have been inspired to enter the big National Literature quiz. We hope to make this a District wide event in the future.

### **The Prow**

The Prow website continues to be well regarded nationally and internationally, with the caliber of the work applauded by the National Digital Forum, and won second place at the 3M National Innovation Awards.

### **Collections**

We purchased 14,278 items this year and currently hold 129,292 items across our four libraries. A DVD collection was begun at Motueka, and the German collection was catalogued for Takaka. With 642,312 annual issues, we had a stock turnover of 4.9. Effort was put into streamlining the acquisition process so that new stock becomes available more quickly. The stock is now much more attractively displayed at Richmond and it will be interesting to monitor how use develops.

## ISSUES 2010-11

### APNK – Aotearoa People’s Network

Council has a contract with APN until June 2011. At no charge to Council, we are supplied with 24 internet terminals, a printer, an A3 digital scanner, 24 x 7 system support (relieving IS staff of this), a digital kete website for our local use; and all telecommunication and bandwidth costs. This network won a national award for innovation this year.

Software provided is much more varied and complex than anything IS could supply the libraries due to firewall and security problems and lack of helpdesk staff to manage a range of software. There would be a heavy financial implication to bringing this service back in-house, and a probable drop in service level.

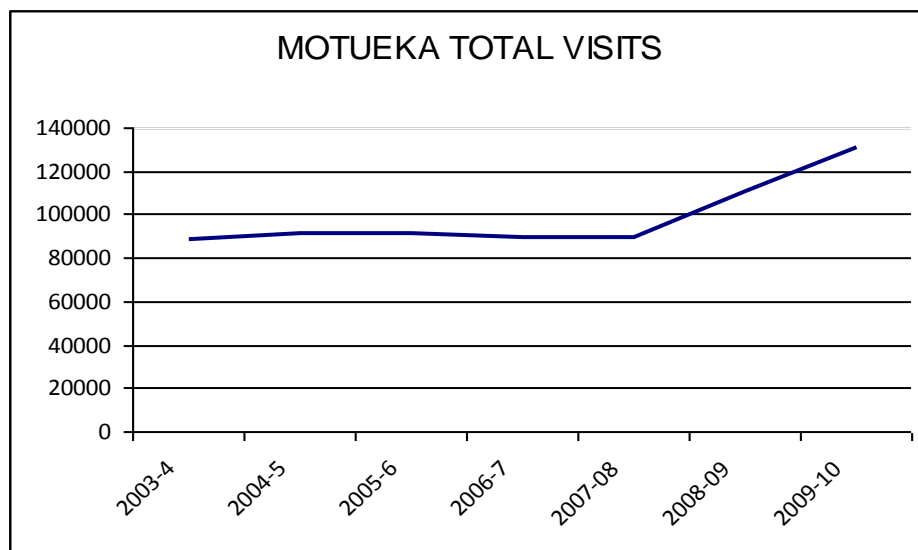
Should Council wish to investigate software to restrict use to library card holders only, there would be a financial cost of around \$30,000-\$80,000 depending on how user friendly our requirements were. Nelson currently provides 10 computers which are Council owned and controlled and are investigating costs around software to restrict access to card holders. Their APN computers will continue to be provided under the current service agreement.

There is no financial, practical or service level basis on which to drop the contract. APN is currently carrying out an impact assessment using an independent contractor to talk with customers around the country and this document should be available around November 2010.

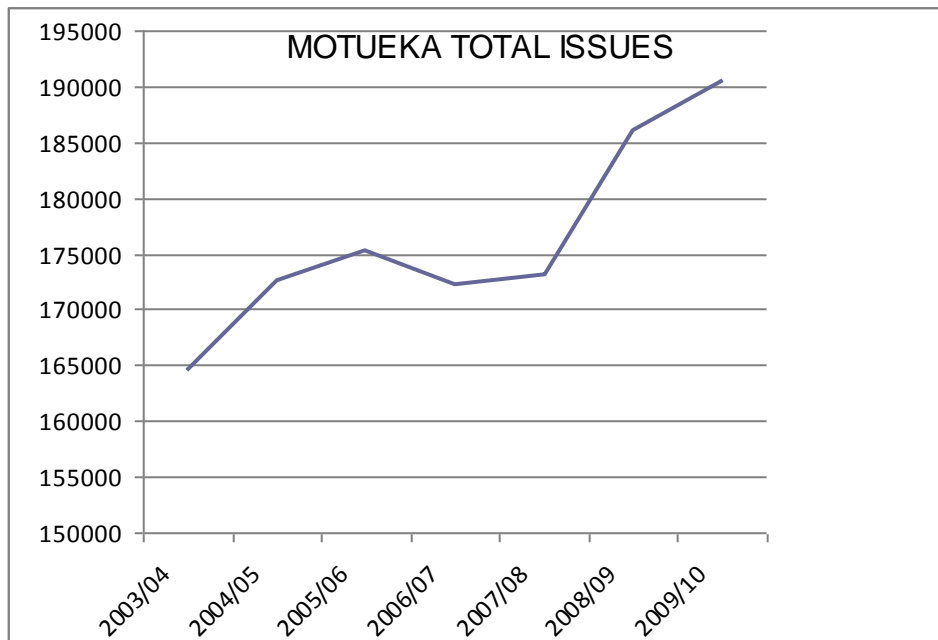
### Motueka Library

It is important that Council moves swiftly to alleviate current space problems at Motueka Library. Business in the last three years has risen swiftly and workspace, public space and collection space are all inadequate.

## VISITS



## ISSUES



## RECOMMENDATION

THAT the Libraries Manager's Report (RCS10-07-07) be received by the Community Services Committee, Tasman District Council.

Catherine Bryham  
Libraries Manager

g:\tara\agendas\community services\2010\july\racs10-07-07 libraries manager.doc