

STAFF REPORT

TO: Chair and Members, Engineering Services Committee
FROM: Gary Clark, Transportation Manager
DATE: 03 February 2011
SUBJECT: **Transportation Report – RESC-11-02-13-INF**
Report prepared for meeting of 3rd February 2011

1 MAINTENANCE OPERATIONS

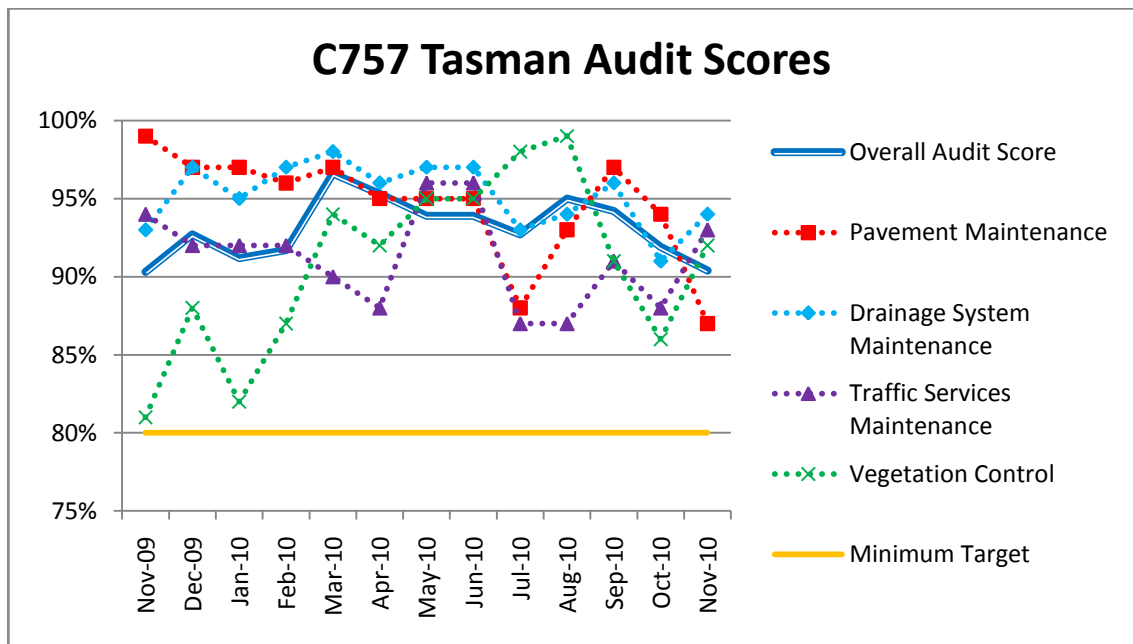
- 1.1 The maintenance of roads has continued as per usual with the exception of the December flood event which created a need to address various emergency issues across the road network. All contractors involved in the areas affected responded very quickly to get most of the roads open in this busy time of the year.
- 1.2 Of particular note was the work done in Murchison under difficult conditions and significant damage. Fulton Hogan have again shown their ability on this contract to get out in the field and deal with the issues with very little instruction and excellent expertise.
- 1.3 There are still issues with some of the network maintenance contracts with regard to performance which our staff and consultants are still managing on a day to day basis. Penalties have been imposed and instructions to carry out work otherwise others contractors will be engaged have been issued. Costs associated with this matter will be passed onto the contractors concerned.

2 TASMAN MAINTENANCE C757

- 2.1 Items completed in November and December include:
 - Lower Queen Street shoulder flanking
 - Lower Queen Street stabilisation repairs
 - Swamp Road cattle crossings rip and remake
 - Rowling Loop culvert replacement
 - Redwood Cellars drainage improvement and culvert replacement
 - Higgs Road sump installation
 - Mapua wharf repairs
 - Salvation Army car park detritus removal and vegetation clearing
 - Programming of pre-reseal repairs for 2011/12.
- 2.2 Items underway and/or programmed for completion in January 2011 include:
 - Network remarking
 - Upper Moutere township drainage improvements
 - Moutere Highway/Holdaway Road sight distance improvements
 - Commencement of the 2011-12 pre-reseal repairs.

2.3 Downer have some challenges to address on this contract in the New Year, particularly to get on top of overdue Customer Service Requests (CSRs) and the backlog of programmed work. The project team is looking forward to Downer's new contract manager, John Panckhurst, shifting to Nelson in January to help drive an improvement in their performance.

2.4 The results of recent MWH audits of the network condition are shown in the following chart.



The condition of the network overall continues to meet the required standard. Unsealed pavements are beginning to suffer the effects of prolonged dry period with corrugations forming.

While the score is still above the minimum target, an ongoing management of this contract is still required to ensure the audit scores improve.

3 WAIMEA MAINTENANCE C758

3.1 Items completed in November and December include:

- numerous pavement repairs in Eighty Eight Valley, Tapawera areas
- remarking of arterial roads
- programming of pre-reseal repairs for 2011/12.

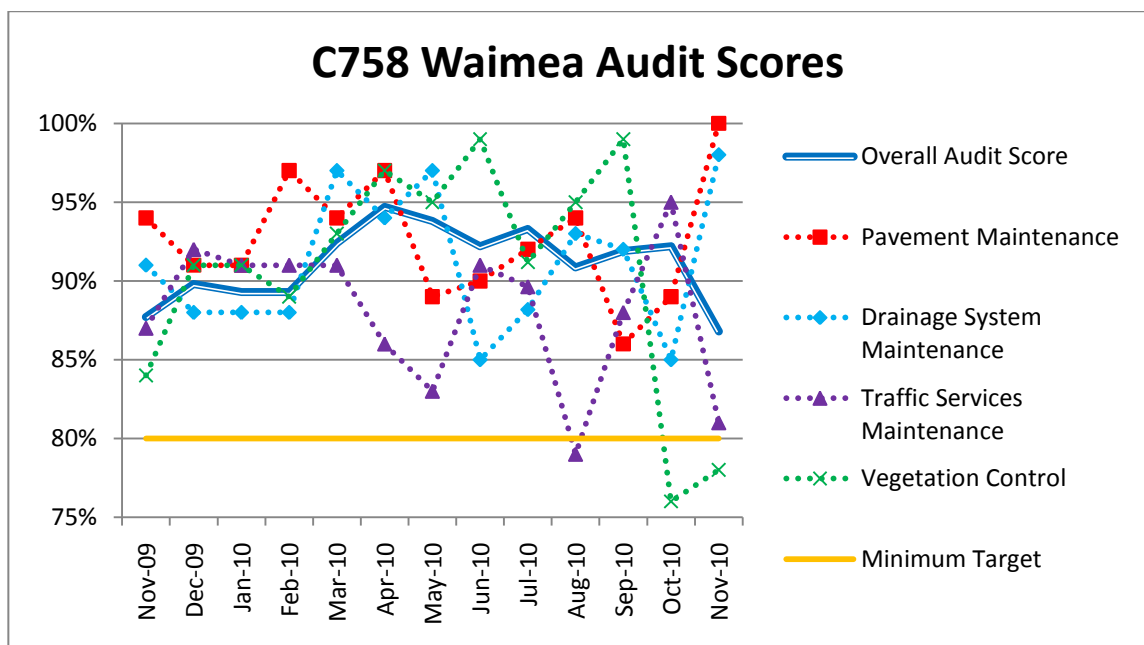
3.2 Items underway and/or programmed for completion in January 2011 include:

- pavement repairs on Lee Valley Road
- network remarking
- delivery of roadside structure report.

3.3 Vegetation is a big issue with recent rain, warm temperatures and high humidity the grass growth has flourished and the contractor is struggling to keep up. Roadside

mowing was briefly halted for 4 days in early December following a request from the Rural Fire Authority due to high fire risk.

- 3.4 Unsealed roads are still taking a pounding by logging trucks, and with the dry spell the contractor is finding it difficult to hold unsealed surface in a bound state, with the couple of days rain received between 17th and 21st December allowed graders to get out and cut pot holes and corrugations, when the road surfaces were softer.
- 3.5 Overall performance has improved on this contract in the last month, with CSR completion on target, programmes being completed and better ownership of network being shown. We are looking forward to Downer building on these positive signs in 2011.
- 3.6 The results of recent MWH audits of the network condition are shown in the following chart.



As with the Tasman Contract above there is an ongoing need to manage this contract on a day to day to basis to ensure the audit scores improve and the downward trend stops.

4 GOLDEN BAY MAINTENANCE C788

- 4.4 During early December Golden Bay received significant rainfall, which required Fulton Hogan to undertake many emergency responses due to slips, trees falling and flooding. Totaranui Road and the Wainui Hill section of Abel Tasman Drive was most affected with slips at various locations. This resulted in temporary road closures while the material was removed and the network made safe. The Aorere River also burst its banks resulting in Collingwood-Bainham and Collingwood-Puponga Roads being temporarily closed until flood waters dropped.
- 4.5 A larger more significant flood event dominated late December between Christmas and New Year, with the highest flows ever recorded in the Aorere and Anatoki Rivers causing widespread damage to transportation assets.

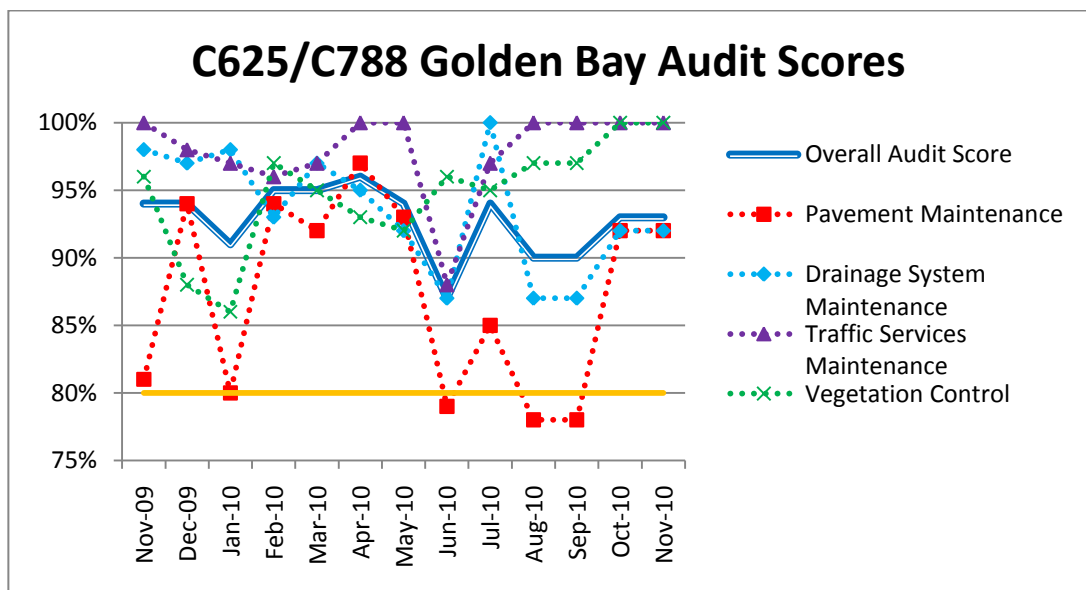
4.6 The weather has delayed the completion of some programmed work, however general maintenance has progressed well to ensure the network is looking good for the busy holiday period. Any uncompleted works have now been re-programmed for the 2011 year.

4.7 Items completed in November and December include:

- Responding to various slips on Abel Tasman Drive, Totaranui, Awaroa, and Dry Roads
- Completion of the Dry Road slump works
- Continued pre-reseal repairs on all 2010/2011 reseal sites
- Roadside structures inventory
- Network remarking
- Hiawatha Lane drainage works
- Further emergency response during Christmas period.

4.8 Items programmed for January include:

- Flood damage repairs
- AC levelling slumps on the Cobb Lower Dam Road
- Cobb Lower Road slip repair to continue (weather dependant)
- Pre-reseal repairs to continue
- All faults register to be completed
- Slips works on Awaroa Road could be programmed (may leave to March)
- Orion Street Seal Extension.



5 MURCHISON MAINTENANCE C787

5.1 A significant flood event occurred in late December between Christmas and New Year causing significant damage to various transportation assets including Glenroy and Maruia Saddle Roads.

5.2 Items completed in November and December include:

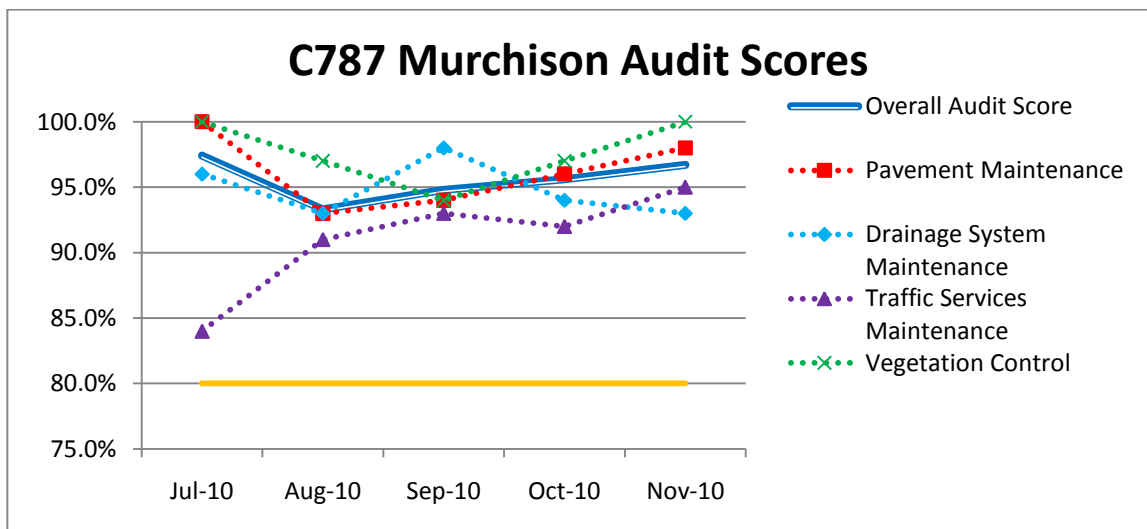
- Fairfax Street Drainage Improvements

- St Arnaud DoC Car Park Pavement Repairs.
- Full network remarking under the new delineation policy.
- Emergency response to flooding late December.

5.3 Items underway and/or programmed for completion in January 2011 include:

- Flood damage repairs
- Fairfax Street soakpit
- Waller Street footpath reshaping
- Tutaki Road South pavement repairs.

5.4 The results of recent MWH audits of the network condition are shown in the following chart.

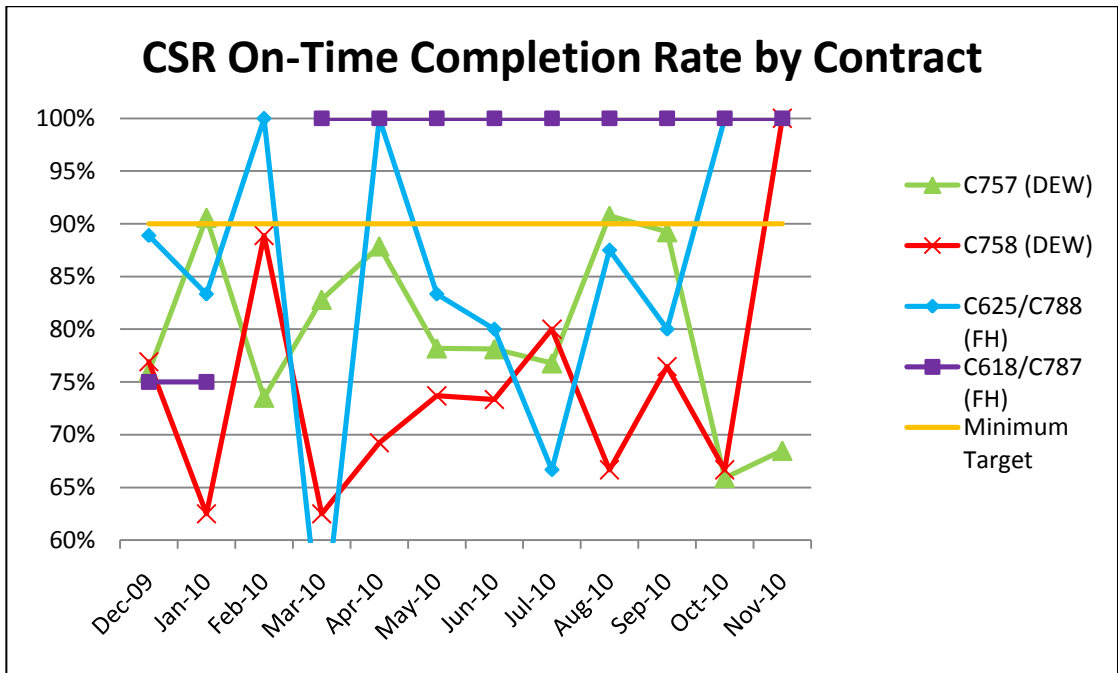


This contract continues to perform very well with the contractor taking ownership of the network and providing an excellent level of service to the community of Murchison and surrounds.

6 SUMMARY OF NETWORK PERFORMANCE

Customer Service Requests

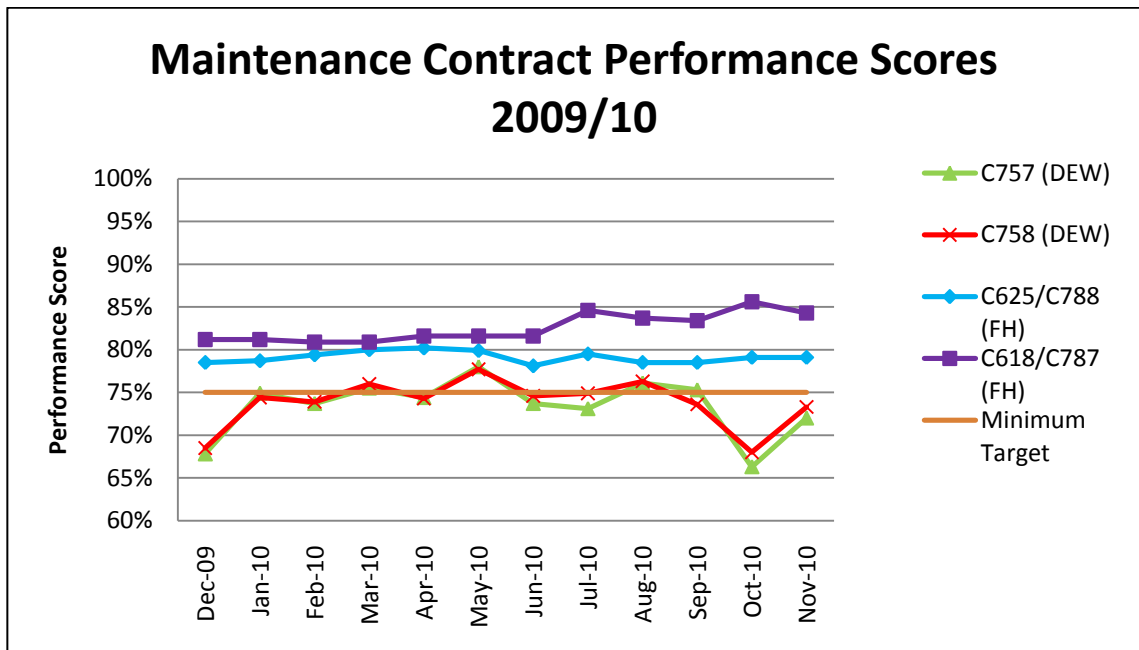
CSR completion rates over the four contracts are summarised in the following graph.



All contracts achieved 100% on time completion with the exception of Downer in Tasman. This will be a focus of the project team with the new Downer contract manager in January.

7 PERFORMANCE SCORES

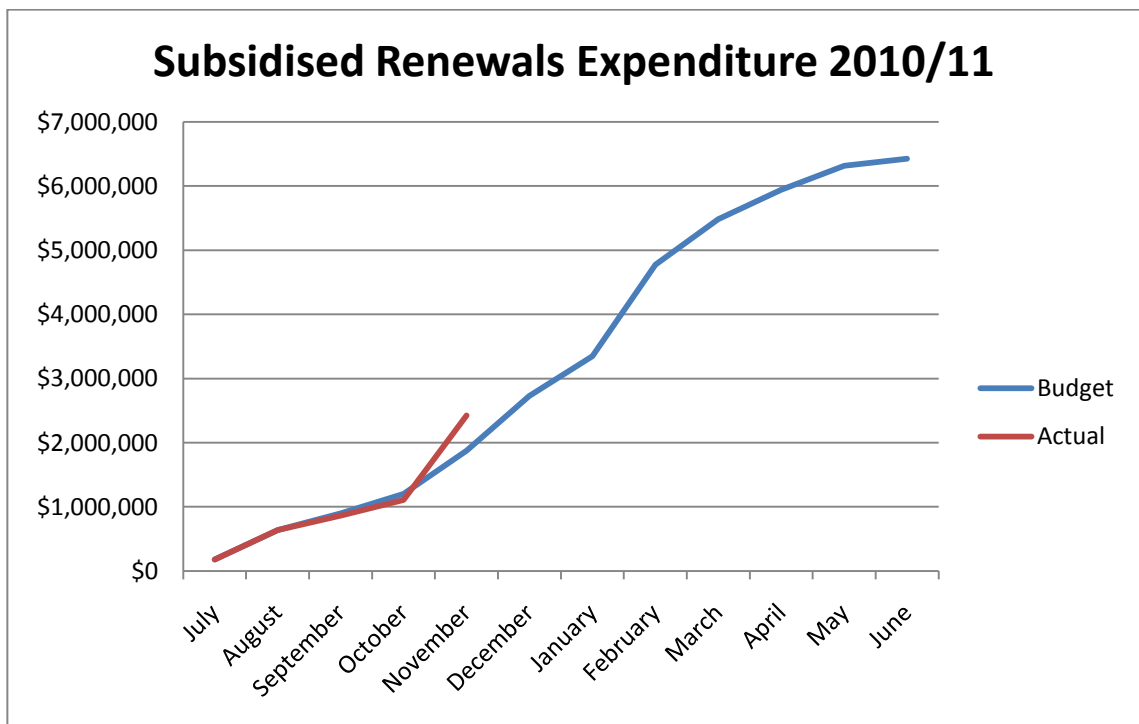
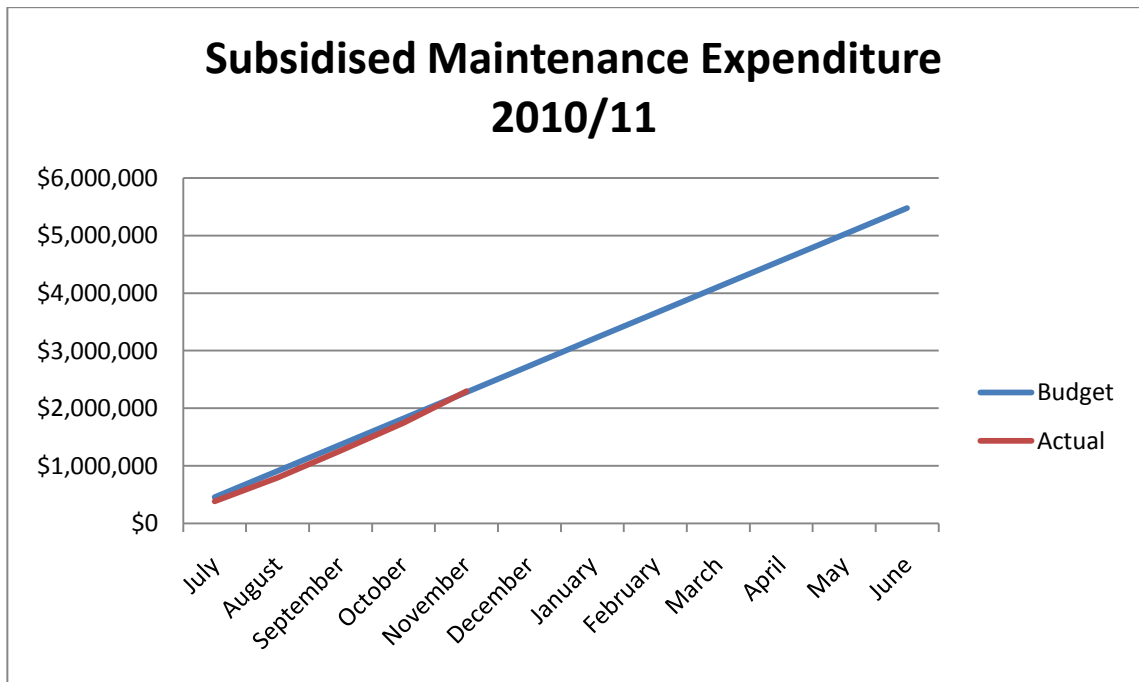
Based on MWH audits of the Contractor's maintenance work, systems and overall contract delivery, the following graph tracks the Performance Score Summary over the four contract areas.



Again the Tasman and Waimea contracts are failing to meet the minimum grade in terms of the above scores. This issue has resulted in penalties being applied to the payments and instructions relating to performance being issued. This is disappointing and is being managed carefully to ensure improvement in the work provision.

8 FINANCIAL

8.1 The following graphs show the estimated expenditure profiles, and expenditure to the end of November 2010, for the subsidised maintenance and renewals budgets.



- 8.2 Subsidised maintenance expenditure is tracking approximately to budget.
- 8.3 Subsidised renewals expenditure has spiked slightly above expectations during November due to earlier completion of some reseal sites. However as the year progresses the expectation is that Council will spend its allocated funds in all areas of this activity area.
- 8.4 Total expenditure across maintenance and renewals is expected to match or slightly exceed the 2010/11 total subsidised budget of \$11,889,000.

9 STREET LIGHTING

- 9.1 Powertech continue to perform well overall. In November all CSRs were completed on time.
- 9.2 Powertech are underway with a trial investigation of the aged steel columns in the Abel Tasman Drive area. Site investigations to determine the replacement priority will be complete by the end of January 2011. Upon completion of the trial MWH will look at the possibility of extending inspections over the remainder of the network.

10 PROJECTS

10.1 Gladstone Road Undergrounding

The trenching in the road reserve is due to be completed by late January. New fibre optic cables to homes and businesses will also start being installed then along with new street lights. The new underground network will be progressively lived up with all properties changing over as the work progresses.

The lines and poles will start coming down in sections in late January. Tidy-up and final reinstatement will then be carried-out most likely in late February 2011.

10.2 Richmond Kawatiri Cycle Facility – Stage 2

This project involves extending the shared pedestrian/cycle path along the railway reserve or corridor reserved for the Hope Bypass from the Appleby Road Over-bridge to Ranzau Road.

The project is presently in design phase. Once the design is completed it will be forwarded for review by NZTA enabling hopefully the granting of a Licence to Occupy. NZTA has indicated that its property arm will deal with the licence and consultation with existing lease holders.

The construction of the work will be tendered this financial year. Funding is from Councils share of its contribution towards a number of subsidised cycling facilities which it was unable to gain funding from NZTA under the Land Transport Programme. This project was one of those projects and which will be fully funded by Council. The path will link to the shared path being constructed by the Cycle Trust along Ranzau and Pugh Roads and which will eventually link to Brightwater.

10.3 Waimea College Proposed New Signalised Entrance off Salisbury Road

Waimea College is planning to upgrade facilities at the school for expected future growth. Part of the plan is to install a new access into the school off Salisbury Road opposite Arbor-Lea Avenue. This would see the closure of one of the existing entrances into the Staff Carpark. The new access will provide better internal access as well as a new parking and pick-up and drop-off area for students with disabilities.

The proposal is to install traffic signals on Salisbury Road at the intersection of Arbor- Lea Avenue and that of the new college entrance. This will provide a safer intersection that has a crash record and improve the linkage for school to cross Salisbury Road at this point. The traffic signals will be linked to the Talbot Street lights to ensure traffic flows along Salisbury Road continue to run efficiently.

The Ministry of Education is funding 50% of the cost with Council funding the other share from its Minor Road Improvements Program.

The work is programmed to occur this financial year.

10.4 New Footpaths & Pram Crossings

This work will be tendered out shortly. The delay in tendering out was due to some additional footpath sites being investigated on the provision of additional under-spent funds being used for new footpaths.

10.5 Proposed Paths Wadsworth St and Boundary Roads

New paths were planned for these two roads that Council had received requests from the community for as well as support from the School and the local constabulary.

A letter was sent around to affected residents informing them of the planned work which included drainage improvements. Submissions were received from some residents objecting to the path. Based on observations of pedestrian numbers made by Cr Riley, it was decided that it may be best to have a site meeting in the New Year inviting affected residents along to have their say on the path and road drainage issues to ensure Council gets strong support and a clear understanding of whatever is planned.

10.6 Destination Signage Collingwood Area – Review

New signs will be installed at the end of the state highway to provide tourism destination information for main tourist attractions in the Aorere Valley and Farewell Spit areas. The signage affected is at the end of State Highway 60 near Collingwood, and also on Collingwood Bainham and Collingwood Puponga Roads near Whites Bridge. The improved signage is to improve directions for tourists when approaching main intersections and provide a consistent approach to providing guidance and remove old now redundant signs.

10.7 **Stringer Road – New Contract 822**

This contract was originally Contract 786 and was awarded to Tasman Construction Ltd and Dusty Diggers Ltd in March 2010. The contract being under two separate companies created liability issues and hence the joint parties requested “Novation”, whereby the contract is reassigned to one of the parties in this case Tasman Construction Ltd.

Recently due to Tasman Construction Ltd having financial difficulties the contract fell into a state of frustration for the Council due to lack of performance by the contractor. Every effort was made to keep the contract going but unfortunately this made no difference to progress and therefore the contract was finally terminated.

Due to the sub-contractor Dusty Diggers Ltd performing most of the work and doing this well, it was decided to request a resubmitted tender schedule from them for the remaining work and which reflected the rates originally agreed under Contract 786.

The advantages of offering Dusty Diggers Ltd the opportunity to resubmit a tender was that they were prepared to stand by the work completed to date. A new contractor may have used the work completed under Contract 786 as a reason for negating responsibility for their own work failing where it over-laid or was reliant on the previous contract work.

The work under contract 822 is progressing on the State Highway to complete this portion of work. Completion of the formation and sealing of Stringer Road is expected to be before the winter season.

10.8 **Orion Street Seal Extension – Fulton Hogan Ltd has started this work.**

The work involves extending the seal from the Washington Street end for a distance of approximately 300m. The work is programmed to be completed this summer before school goes back in early February 2011.

10.9 **Moutere Highway Seal Widening – Curve Shoulders**

Tasman District has a high loss of control crashes. During the five year period between 2005 and 2009, 59% of all injury crashes on the District’s roads and State Highways involved loss of control. Of this 59 percent, 35% occurred on bends with 27% of these on local rural roads, 8% on local urban roads and 44% on State Highways.

In Tasman there is no clear crash pattern on local road curves as these crashes often occur randomly across the road network. Most of the crashes on curves involve a single vehicle. When a vehicle speed exceeds the design speed of a curve or the driver is late in reacting the dynamics of the vehicle causes it to slew towards the outside of the curve. If the vehicle wheels end up in the gravel shoulder which may have a profile which has opposite camber to that of the road then it is probable that the driver will lose control ending up off the road or over-correcting and in the opposite lane.

Through the sealing of additional width the outside shoulder of a curve and ensuring it matches the camber or super-elevation of the road, this will provide drivers with a greater seal area in which to recover the control of the vehicle and hence lessen the chance of a crash.

Council has developed a Seal Widening Matrix which takes into various factors including numbers of crashes. From the matrix the single section of road which would benefit most from seal widening is the Moutere Highway in a tortuous section known as "Cuts Hill".

Council is planning to undertake shoulder widening to a number of curves on the Moutere Highway of Cuts Hill. The contract planned to advertise for tender shortly will treat a number of curves over two financial years. The funding of this work will be from Council's Subsidised Minor Road Improvements Budget.

11 ROAD SAFETY COORDINATION

11.1 Motorbikes

The three up-skilling and refresher training courses that were held in December were fully subscribed. There were two advanced and one intermediate course. All riders that attended a course provided great feedback on all aspects of the course. Dates for the first half of 2011 have now been set, with more on-road courses being run with courses in Motueka, Murchison, Golden Bay and at colleges is underway.

Dates...

- Saturday 5 February – intermediate on-road course
- Sunday 6 February – advanced on-road course
- Saturday 20 February – intermediate course
- Saturday 26 February – intermediate/advanced course
- Sunday 27 February – advanced course
- Saturday 2 April – intermediate course
- Sunday 3 April – advanced course

Promotion of these courses and the Top of the South Motorbike Safety Plan is underway in all local papers, web based and radio media and also through some national publications.

11.2 Child restraints

Since the launch of Booster Rooster in August 2010 nearly half of Tasman District Schools and early learning centres have had a visit from Booster. As this was a new resource these early visits have been valuable with evaluations received from the schools/centres. From this feedback the script has been tweaked so that a couple of versions have been recorded to better fit with the different set-ups of the schools/centres. The evaluation forms have also been updated to ensure a more robust feedback process is in place.

Working alongside the Police and Plunket a child restraint compulsory checkpoint was held in November in Motueka. During 1 ½ hours that this checkpoint was in

place 37 cars were stopped and 43 child restraints were checked. Out of these 43 restraints 16 (37%) were fitted correctly, 13 (30%) were fitted correctly after minor adjustments had been made by staff on site, 11 (26%) were fitted incorrectly and three (7%) children, under 5 years old, were found to be unrestrained. Those seats that were fitted incorrectly and the parents of the children who were unrestrained were issued a compliance notice by the police and information, support and advice was given to these parents on how they were able to fix their issue. The most common issue that was found was that the tether strap that should have been attached to a bolt in the back of the car was not done so. Other issues encountered were incorrect routing of the seat belt, a restraint that had passed its use-by date and the wrong size of restraint for the child.

Future checks and voluntary checking clinics are being planned on similar lines to the week-long checks run in 2009, but these will be dependent on funding. Support from the police and agencies like Plunket has already been obtained.

11.3 **Back to school**

The zebras are to be let loose again for another Back to School campaign. The zebras will visit schools and early learning centres across the District that have zebra/pedestrian crossings. The campaign is aimed to remind drivers about children being back and school, especially around crossing points and also to remind pedestrians about the correct way to use a school patrolled crossing.

11.4 **Bike wise**

Bike Wise runs for the month of February. Various events are planned for Tasman in conjunction with local community groups. Volunteers are needed at all events so please contact Krista if you can spare a couple of hours to help out, and take part in the rides.

11.5 **Go By Bike Day breakfasts**

Anyone out and about on their bikes on these mornings will receive a free breakfast snack.

- Takaka – Tuesday 15 February – outside The Quiet Revolution, 7.30am – 9.30am.
- Motueka – Wednesday 16 February – outside the Museum, 7.30am – 9.30am
- Richmond – Wednesday 16 February – outside Village Cycles, 7am – 9am
- Murchison – Wednesday 16 February – outside the council office, 8.30am – 9am

11.6 **Family Fun Rides**

A number of events are planned

- Takaka – Sunday 20 February. The ride starts at 1pm from Central Takaka School and cyclists ride to the East Takaka Domain. At the domain there will be various activities taking place and one cyclist will win a new bike and

helmet donated by the Bike Wise team. Cyclists will then cycle back to the school in their own time.

- Motueka – Sunday 27 February. The ride starts at 1pm at the Skate Park on Old Wharf Road. The ride takes cyclists along the foreshore and back to the skate park via Thorp Street. There are two different routes so it is suitable for all ages and abilities of cyclists.
- Richmond – Saturday 5 March. The ride starts at the Annesbrook Church at 9am. There are three different routes, with the short route heading towards the ASB Aquatic Centre and then back to the church, the middle length route takes in the ASB Aquatic Centre and then to the Honest Lawyer and back to the church, and the long route follows the middle length route and then heads out to Atawhai before heading back to the church. This ride is being organised in conjunction with Nelson City Council and Tear Fund who are encouraging cyclists to gather sponsorship.

11.7 Stopping Distances demonstrations

Most schools have now signed up to take part in the Stopping Distances demonstration campaign to be run in during May 23 – 27. Demonstrations have been organised across the District so all schools will have the opportunity to attend a demonstration without the need of travelling too far. There will be extensive promotion and advertising before the demonstrations as some roads will need to be closed and traffic management will need to be carefully planned at each different location. Different organisations and agencies will be involved in the week, including the Police, Fulton Hogan and Rural Woman.

11.8 Rotary Youth Driver Awareness campaign

This campaign will be run during March 21 – 25. Year 11 students from Tasman District colleges will spend a day at the A & P Show Grounds. The students will attend five different sessions during the day – Safe Partying; It's your choice and Consequences; Hazard awareness and Defensive driving; Budgeting and Insurance advice; Stopping distance demonstration. The campaign is being run in conjunction with the Police, ACC, local rotary clubs, Nelson City Council, Brain Injury Trust and local driving instructors.

12 RIVERS

12.1 Annual River Maintenance

The maintenance of the river system has been running as per the approved programme outlined in the AOMP. The removal of Crack Willow along river banks and other maintenance works have been completed on various rivers across the district during November and December

Due to the flood event in December the works that were due to be carried out as part of the AOMP for January have not occurred as yet. It is hoped to catch up on this work upon completion of the repair to the bend downstream of Rockville.

12.2 Flood River Works

There has been significant damage to council and private assets along several rivers in the district and in particular the Aorere River, Wangapeka River and Buller River. The amount of work is still being investigated and funding sources confirmed. Any work to repair the damaged river works will be tendered out once funding has been confirmed and approved by Council.

13 TENDERS

13.1 The following tenders have been awarded since the previous Engineering Services Committee meeting:

No.	Contract name	No. of tenders	Successful tenderer	Amount	Highest amount	Council estimate	Budget for this item	Comment
809	Pavement rehabilitation 2010-2011	3	Tasman Civil	\$578,260	\$595,493	\$660,584	-	Funded from several subsidised roading work categories.

14 RECOMMENDATION

14.1 **THAT the Transportation Report, RESC-11-02-13 be received by the Engineering Services Committee.**

Gary Clark
Transportation Manager