

STAFF REPORT

TO: Chairman and Members, Engineering Services Committee

FROM: Roger Ashworth, Transportation Manager

DATE: 21 April 2008

SUBJECT: **TRANSPORTATION REPORT**

1 MAINTENANCE CONTRACTS

- **Waimea**

March and April have seen steady progress within the Waimea maintenance contract with particular emphasis on grading and culvert inspections. Recent heavy rain has shown that damage can be limited by ensuring that roading drainage facilities are fully operational. During March 1100 culverts were inspected and we believe the emphasis on drainage has assisted in lessening the amount of damage experienced during heavy rainfall.

- **Golden Bay**

A contract meeting was held in Golden Bay on 17 April 2008 and work within the Bay continues at an appropriate level. As Council is aware Transit NZ are also involved within the Golden Bay contract with 75 kilometres of state highway network included in the local road contract although separately funded by Transit NZ. Transit NZ has an issue with Eureka Bend that is being addressed but generally the state highway network, as in the local roading network is at a satisfactory standard.

- **Murchison**

Inspections and auditing indicate that this contract is being well managed.

- **General Maintenance**

As reported at the last meeting, a presentation is being targeted for the 12 June meeting to present to Council some options and recommendations for changes within the roading network zones throughout Tasman District but, in particular in the Waimea area. Transit NZ is involved in discussions regarding possible joint venture maintenance contracts

2 PASSENGER TRANSPORT

Council and staff recently attended a briefing on a passenger transport study being undertaken within the Nelson area. This study was funded mainly by Nelson City Council with Tasman District Council contributing. Obviously with passenger transport there are a number of cross-boundary issues. Councillor Edgar attended the elected representative session. The Nelson study mainly focuses on the Nelson urban area but does include the Richmond route and is now being finalised with a due date of 9 May 2008.

To progress passenger transport within the TDC area in particular staff will be recommending some funding be made available for the 2008/2009 financial year to continue on from work that is currently in progress. Ian Hunter from Land Transport NZ will

address Council in July to outline options available and provide an update on new initiatives in the passenger transport area.

3 PROJECTS

- **Richmond Town Centre**

Work is progressing well on the Richmond Town Centre project with stage 1 now complete with the exception of street furniture and planting. Drainage is well underway on stages 2 and 4 with the whole site now cleared.

The naming competition for the town centre closes at the end of this month. The design for the water feature is complete with the components now on order. The gazebo has been successfully relocated to its new home at Faulkner's Bush.

- **Flood Damage**

The week beginning 14 April saw the district experience intense rainfall. Fortunately from a roading perspective, damage was relatively light with most areas suffering surface flooding and some minor slips in the Riwaka-Kaiteriteri area.

The ongoing reinstatement of flood damage suffered late last year and earlier in 2008 is well underway with our final contract for this reinstatement closing on 16 April 2008.

- **Seal Widening**

Seal widening works at Teapot Valley and McShane Road, Richmond are virtually complete.

4 FOOTPATHS AND SHARED PATHS

- **New Footpath Contract** - This was recently awarded to CJ Industries of Motueka to undertake the construction of new footpaths in Motueka on Talbot Street north side for its full length, Old Wharf Road from end of existing south side path to reserve, Pah St on the south side extending to the Marae and Whakarewa Street on the northern side extending from west of Grey Street to Queen Victoria Street. Also, in this contract were several minor safety projects referred to below.
- **School Road at Riwaka** had a new footpath installed on the southern side to link in with the Lodder Lane shared path and the existing footpath that stops near the school. This work was included in the Lodder Lane rising main and shared path project.
- **Rototai Road Golden Bay** - A new footpath and shared cycle path are to be constructed on the northern side of this road shortly once the contract for this work has been awarded.
- **Footpath Rehabilitation** - A contract was recently awarded to Adcock and Donaldson to reconstruct footpaths on Waverley Street Richmond, Salisbury Road between Queen Street to just before the Florence Street shops, Waimea West Road just west of Lord Rutherford Road North and Main Road St Arnaud near the intersection with Kerr Bay Road.

- **King Edward Street Motueka** footpath is also to be reconstructed once new kerb and channel has been constructed. The contract for this work has recently been tendered.
- **Shared Paths** - Shared paths are those used by both Cyclists and pedestrian.
- **Lodder Lane Shared Path** - This work was completed as part of the sewer rising main project undertaken by Adcock & Donaldson for council's utilities section. The working together of these two projects enabled cost savings to Council. It is pleasing to see regular users on this path.
- **Motueka Shared Paths** - A contract has recently been tendered for the construction of a shared path on Queen Victoria Street extending along the eastern side from near King Edward Street to Wildman Road and including Wildman Road as well as Main Road lower Moutere from opposite the store and extending along to the main entrance into Lower Moutere School on School Road.

5 MINOR SAFETY & SAFETY PROJECTS

A number of out of context curves were identified on both the Moutere and Motueka Valley Highways. These curves due to there surface characteristics are prone to cause some drivers to have to correct and may have been the cause of near-misses and in some cases a contributing factor in a nearby crash. These areas have recently been reshaped by using cement stabilisation technology (see photo below).



- **Tadmor Bushend Road** curve alignments have recently been let in Contract 745 - Slip Remediation. These two corners are to be widened particularly on the inside to allow large trucks to negotiate the bends without crossing the centre line.
- **Intersection Upgrades Motueka** - Whakarewa Street at Queen Victoria Street is to be upgraded with a Splitter Island to increase the conspicuity of the intersection for

drivers on Whakarewa Street, as this site has been identified as a black-spot due to Whakarewa Street bound drivers failing to give way to Queen Victoria Street traffic.

- A right-turn lane is to be installed for north bound traffic on Queen Victoria Street turning into King Edward Street as well as minor realignment of the kerb on the north eastern corner of Queen Victoria Street that will enable the "Give Way" for south bound traffic to be eliminated.
- **Salisbury Road Street lighting** (due to under-grounding) - This work is underway with the new light poles presently being installed. Once the light poles are in place and connected as well as the new underground cable livened, then the old service poles and over-head lines will be removed and the footpath reinstated.
- **New Pedestrian Facilities** at Hill Street/William Street and Churchill Ave/Polglaze Street Intersections - Splitter Islands are being installed at both intersections with at grade pedestrian cut- through access and hand rails.
- **Motueka Valley Highway** - Trees mainly on the western side of the road between Tapawera and Kohatu were taken down recently at the land owners cost with Council under-writing the traffic management cost. A similar deal was done on Lansdowne Road opposite Heglunds Art Glass Studio.
- **Swamp Road** realignment work near the intersection with Factory Road has been tendered and is due for completion in the new financial year. This project was identified in Council's Land Transport Programme as a separate funded project due to the crash history of the site. Land purchase was necessary first, before proceeding with the project. Minor Safety funding will be used to extend the project to realign the next curve which whilst it hasn't a significant crash record, if this was to remain then the crashes may start occurring here after realigning the corner near Factory Road.
- **Harley Road** curve realignment at Old Coach Road - This work has recently been tendered and is to be undertaken this financial year and required land being purchased before proceeding.
- **Network Delineation upgrades** - This work involves marking edge lines on both Abel Tasman Drive and the route up to St Arnaud, which includes Wai-iti, Stock, Kerr Hill and Korere Tophouse Roads. Also, single arrows are being marked on the pavement of various tourist routes at locations such as single lane bridges and picnic spots to remind drivers to keep left.

6 PIGEON VALLEY ROADING IMPROVEMENT

Fulton Hogan Limited, Council's road maintenance contractor for the Waimea Area, has recently undertaken an upgrade of Pigeon Valley Road from approximately half way up the gravel section to near the Dovedale Saddle, a distance of approximately 3 kilometres. The work is to trial the use of a low cost stabilisation treatment using RAP (Recycled Asphalt Pavement) to improve the pavement durability and subsequently reduce the need for maintenance intervention and hence maintenance costs. Ideally, a seal extension would be the preferred option' however due to the high cost and low traffic volumes this treatment is uneconomic for Land Transport NZ funding assistance.

RAP, is recycled asphalt which either has been won from milling-off an existing asphalt pavement that requires renewing or, from unused material that has gone cold and is no longer usable.

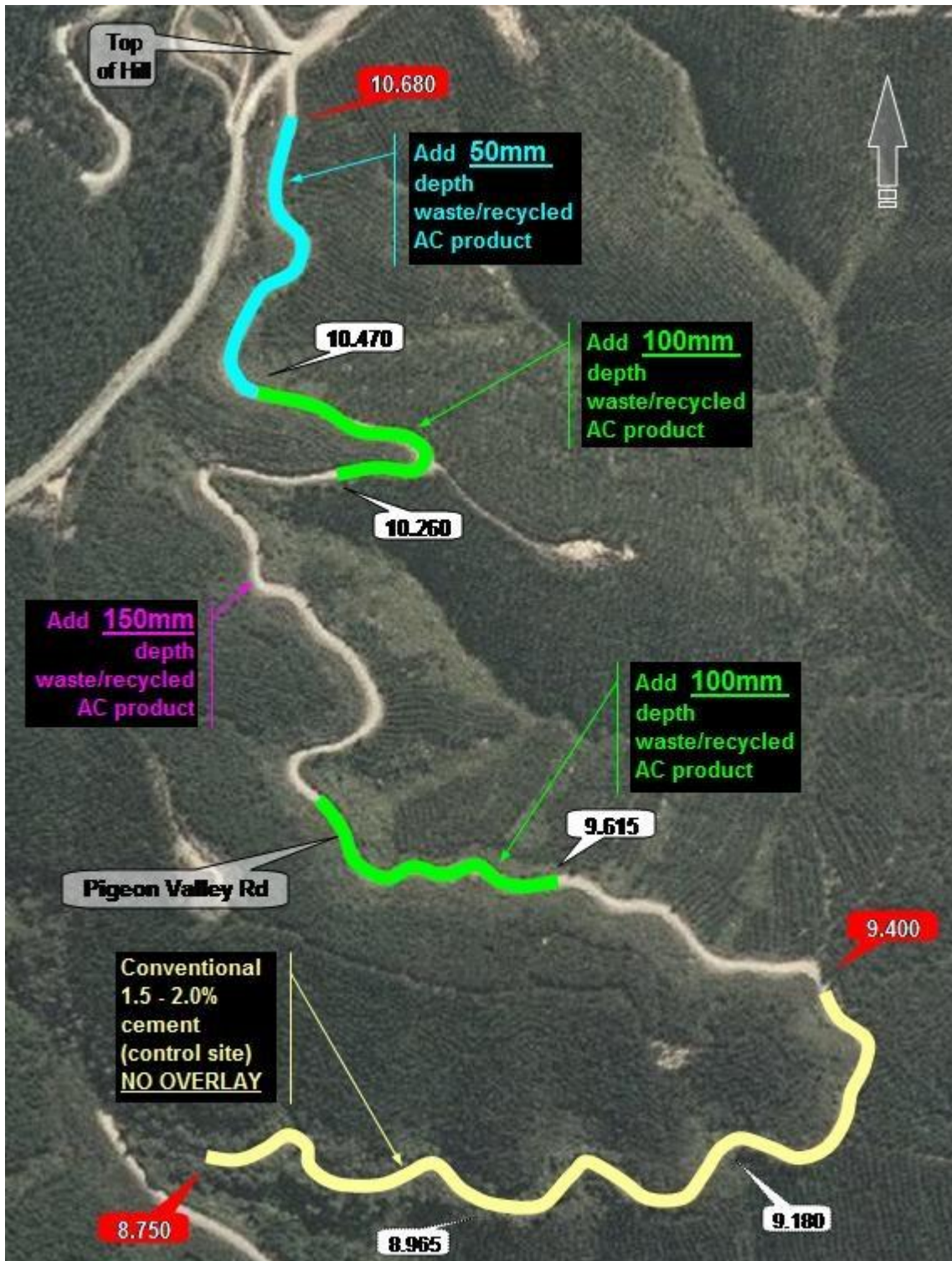
The asphalt material is taken from stock-pile in large chunks and transported to site and spread. A Sheep Foot Roller is first used to undertake the initial break-down of the material with a grader then used to mix in gravels and shape the final road surface. The final surface is then rolled using conventional rollers.

The total length of approximately 3 kilometres was divided into sections to be treated with varying depths of RAP. Also, and as a comparison a section of gravel pavement was stabilised with cement without any addition of RAP.

If the trial is successful, then it will be a good way in which to recycle a waste product and to strengthen and provide a durable surface with hopefully low dust emission and lower maintenance costs.

The trial was funded by Fulton Hogan and from Council's Road Maintenance Budget.





7 RIWAKA SPEED LIMIT

A meeting was held on 4 April 2008 to discuss the current 50 kph speed limit through Main Road Riwaka. Mr Paul Heywood from the Automobile Association was present along with Crs Norris, Inglis, Dowler and Wilkins. The meeting was unable to reach a unanimous position as the NZ Police oppose the raising of the speed limit to 60 kph. As such Council has now requested that Transit NZ determine what process is required to progress the issue. It was noted that Council supported the 60 kph speed limit as set out in our letter to Transit NZ in 2002. This was an action item from the last Transit NZ liaison meeting.

8 THREE BROTHERS CORNER, RICHMOND

Attached is a draft plan presented to Council staff and Councillor Higgins last month. The plan has now undergone full consultation with the draft scheme plan lodged with Transit NZ. The design is targeted for completion at the end of this financial year. Council has requested as part of the intersection upgrade that Transit NZ investigate the removal of the Appleby Overbridge but as yet no feedback has been received.

9 NATIONAL PARK ACCESS ROADS – Report on funding discussions with Land Transport New Zealand (LTNZ) and the Department of Conservation (DoC)

A request from the Department of Internal Affairs into local government rates was received. Ongoing work identifying roading costs attributed to the DoC estate access is being undertaken. Rough order costs approximate that \$250,000 is currently being spent by Council on shared access routes.

10 ROADING POLICY & PROCEDURES MANUAL

The review checking and uploading on to Council's website is progressing and should be completed in May.

11 ROAD SAFETY COORDINATOR

• Cycle & Walking promotion

Mayoral Challenge family fun rides - Due to heavy rain the Takaka and Motueka rides were cancelled – new dates have been set for Sunday 18th May at Takaka and Saturday 21st June at Motueka.

Cycle maintenance courses will be held at Motueka High School during term 2; the course is 3 weeks long.

Feet First Walk to School - As in previous years Nelson/Tasman schools won national prizes with a high percentage of children and families taking part. (Brightwater again achieved 100% participation for the whole week.) On Walk to School Day schools recorded 88% participation and during Walk to School Week they recorded 54% participation, an increase from 53% participation recorded before the campaign.

Car free day/CO2 reduction day will be held on Thursday 5th June. There will be breakfasts for walkers/cyclists and rewards for schools taking part. Free public transport from Nelson-Richmond will be available.

• Thirsty Thursday

The Thirsty Thursday Road show toured Nelson, Tasman and Marlborough Schools in March. This involved a wrecked car and drama production based on a Dunedin crash involving alcohol, drugs, racing, modified cars, lack of seatbelts etc. Very positive response from all the schools visited during the tour with media coverage in all local papers.

• Fatigue vouchers

This is a joint campaign with ACC, Marlborough Roads, Marlborough District Council and the police. Vouchers were given out at specific locations and drivers could then redeem

them at designated cafes across the top of the South Island for tea, coffee or bottled water.

- **Drive time seminars**

Free seminars for learner drivers and their parents are to be held at Tapawera High School and at Waimea College in May and Motueka High School in June. Similar seminars are being held in Nelson.

- **Staying Alive expo**

This was a major safety expo organised by the Fire Service. Schools were visited on March 13/14 and the expo was open to the public on March 15 at the Richmond A&P show grounds. On the Thursday and Friday there were seat belt sled demonstrations, Plunket with booster seat and seat belt information and speeding car demonstrations. Also on the Saturday the Thirsty Thursday trailer was on show and fatal vision goggles were demonstrated.

12 RIVERS

- **Rivers Flood Damage**

Restoration works at St Arnaud required after the Good Friday event three years ago are now being jointly funded by a landowner/DoC partnership with input by Council at an appropriate level. This work will be complete before May 1 when spawning season starts.

- **Motueka Stopbank Project**

The consultants draft report leading to a preliminary design and public consultation phase on the renovation of the Motueka Stopbank system is being reviewed. It is hoped that the information will be available for the next meeting.

- **Murchison State Highway 6 Erosion Works**

Transit New Zealand plans to let a contract soon for a major restoration project. Tasman District Council is assisting in ensuring that the gravel needed for gabion basket construction is made available from sites that will benefit from extraction for maintenance purposes. This project also involves the location of suitable hard rock sources for rip-rap and will have a spin-off effect on a source of future rock required for river control works.

- **Gravel Relocation Works**

Twelve resource consent applications for a variety of sites have been lodged with the Environment & Planning Department this week after a very lengthy pre-lodgment negotiation process with Fish & Game. Funding for this year's programmed sites will be available but may need rolling over in the Rivers closed account to ensure that the best result can be achieved.

- **Wai-iti Irrigation Weir**

Long-awaited resource consent to allow the construction of another weir designed to enhance the Wai-iti Valley aquifer has been granted. The contractor is building the structure just below the Waimea West Bridge at the western end of Ellis Street, Brightwater.

13 TENDERS

Tenders awarded since the last meeting:

No	Contract name	No. of tenders	Successful tenderer	Amount	Highest amount	TDC estimate	Budget for this item	Comment
724	Footpath Rehabilitation 2007/2008	4	Adcock & Donaldson	\$46,507	\$60,201	\$53,500	-	Part only of total footpath rehab budget
729	Motueka River Flood Control Scheme Upgrade	2	MWH	\$84,080	-	\$81,500	\$85,000	
730	Iwa Street kerb, channel and stormwater	4	Tasman Civil	\$158,226	\$204,400	\$163,937	\$159,000	
737	New footpaths 2007/2008	4	CJ Industries	\$150,445	\$188,736	\$213,476	\$142,800	

12 RECOMMENDATION

THAT the report be received.



Roger Ashworth
Transportation Manager