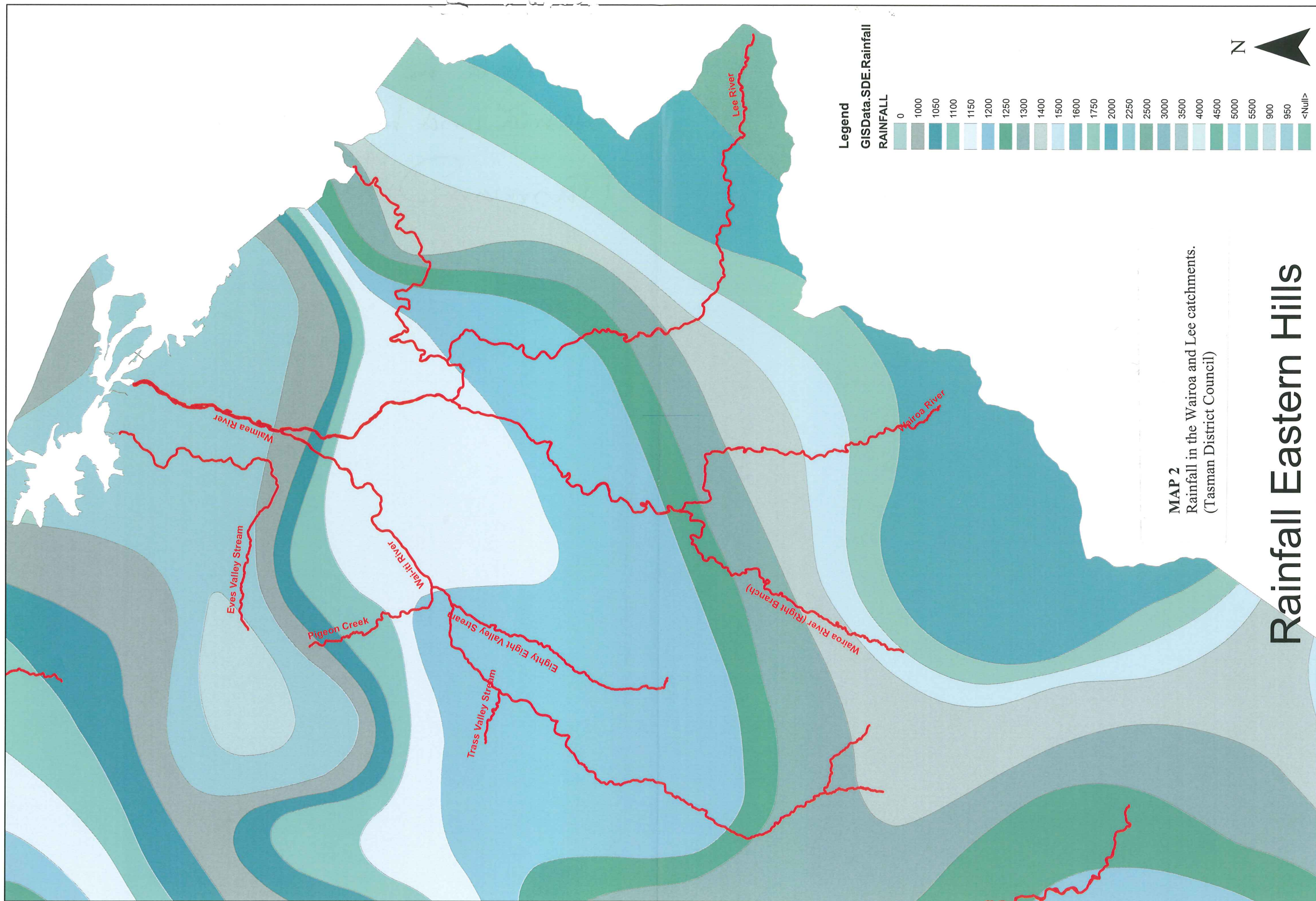
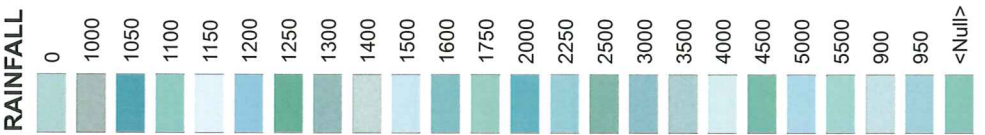


Sourced from Land Information New Zealand data. Crown Copyright reserved. Aerial photography copyright Terralink International limited. Rural Imagery flown Dec2000-Apr2002, Urban Imagery flown Jan2003. The information on this map is prepared for indicative use only and is not intended for definitive legal, location or formal reference purposes.

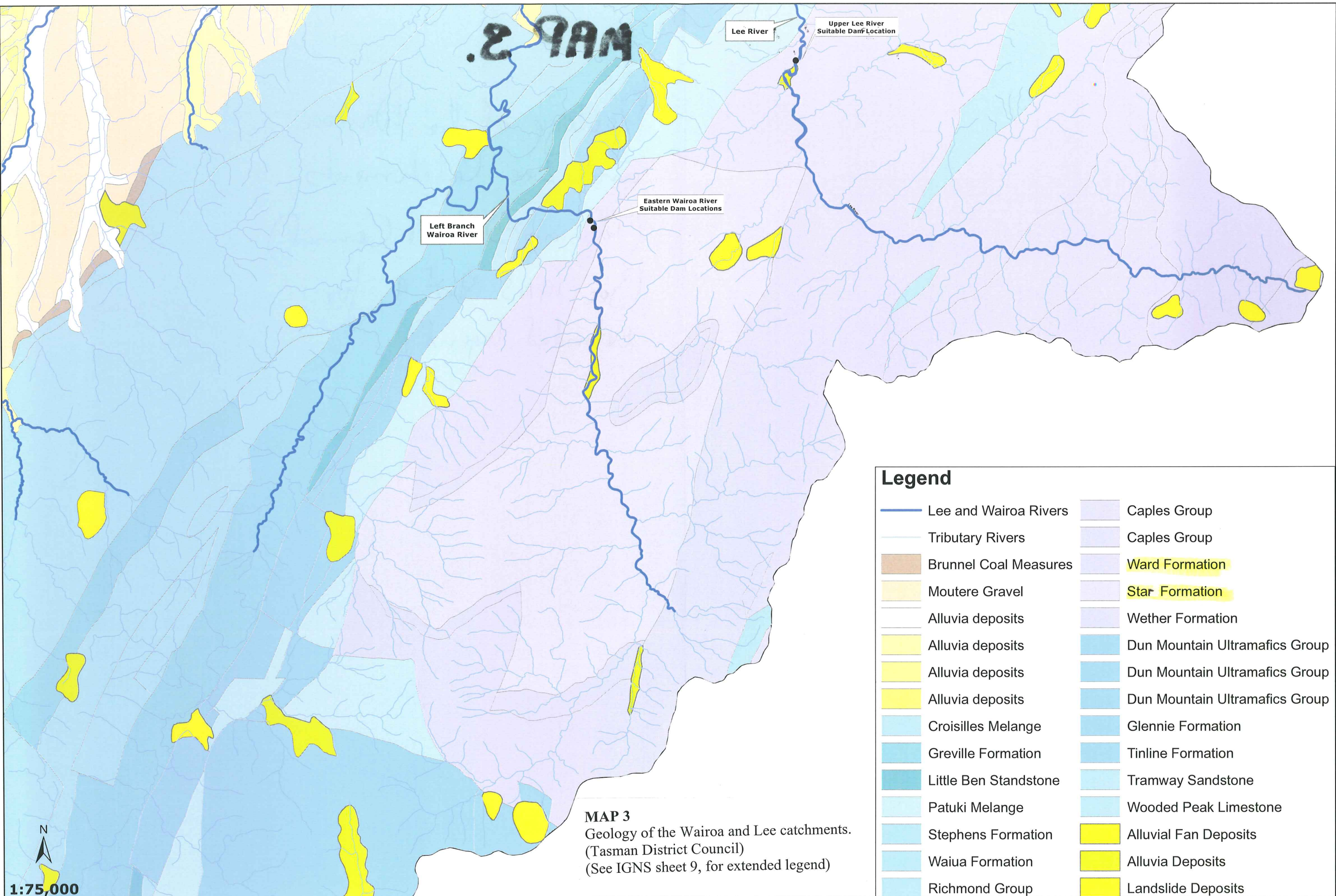


Legend
GISData.SDE.Rainfall



MAP 2
Rainfall in the Wairoa and Lee catchments.
(Tasman District Council)

Rainfall Eastern Hills



MAP 3
 Geology of the Wairoa and Lee catchments.
 (Tasman District Council)
 (See IGNS sheet 9, for extended legend)

Legend			
	Lee and Wairoa Rivers		Caples Group
	Tributary Rivers		Caples Group
	Brunnel Coal Measures		Ward Formation
	Moutere Gravel		Star Formation
	Alluvia deposits		Wether Formation
	Alluvia deposits		Dun Mountain Ultramafics Group
	Alluvia deposits		Dun Mountain Ultramafics Group
	Alluvia deposits		Dun Mountain Ultramafics Group
	Croisilles Melange		Glennie Formation
	Greville Formation		Tinline Formation
	Little Ben Standstone		Tramway Sandstone
	Patuki Melange		Wooded Peak Limestone
	Stephens Formation		Alluvial Fan Deposits
	Waiua Formation		Alluvia Deposits
	Richmond Group		Landslide Deposits

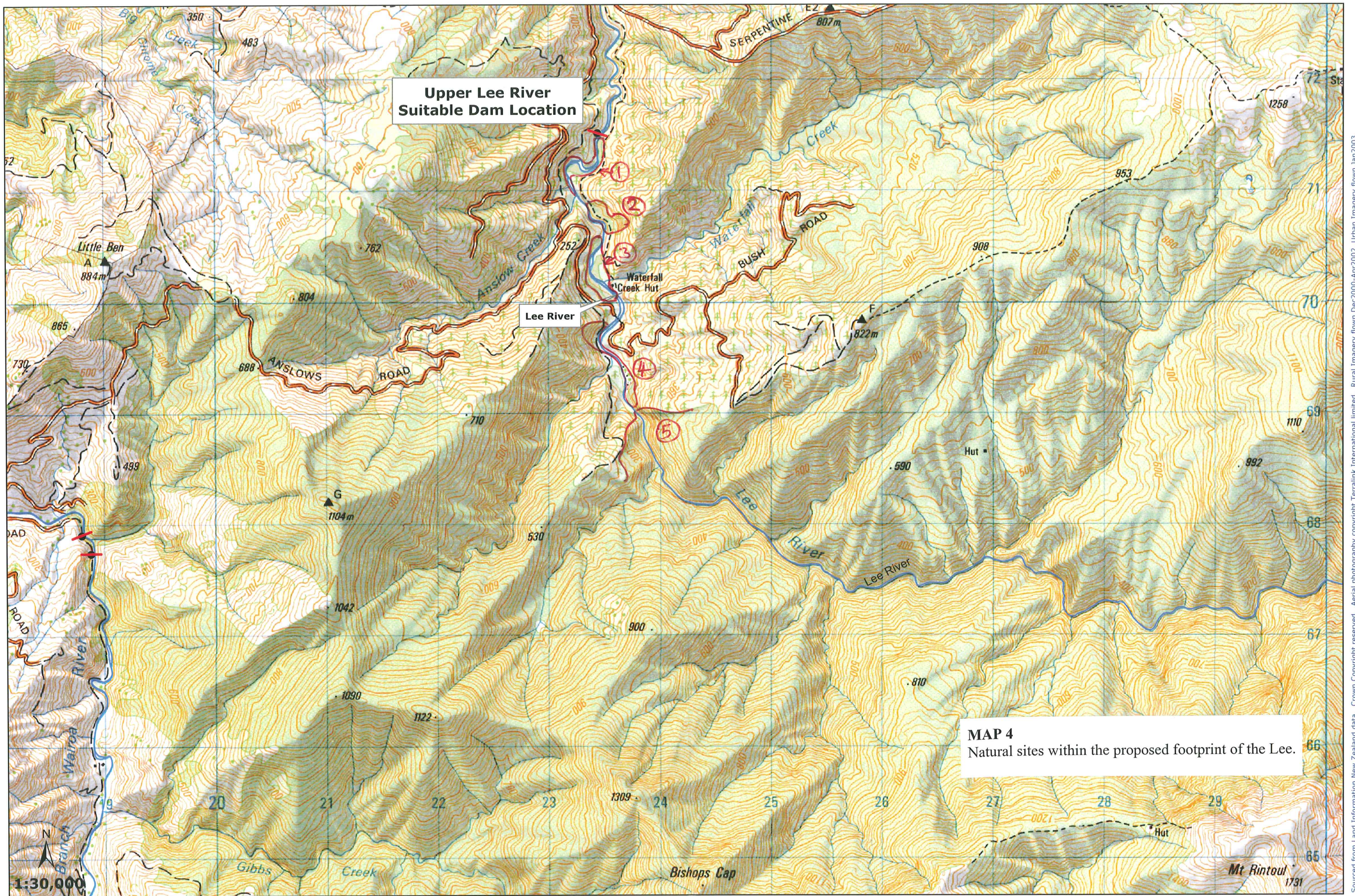
1:75,000



Wairoa and Lee River Catchment Area Geology



Sourced from Land Information New Zealand data. Crown Copyright reserved. Aerial photography copyright Terralink International limited. Rural Imagery flown Dec2000-Apr2002, Urban Imagery flown Jan2003. The information on this map is prepared for indicative use only and is not intended for definitive legal, location or formal reference purposes. Printing Date: March 8, 2006. File: V:\Projects\Jenny\LeeWairoaDamGeologyMay06.mxd



**Upper Lee River
Suitable Dam Location**

Lee River

- ①
- ②
- ③
- ④
- ⑤

MAP 4
Natural sites within the proposed footprint of the Lee.

1:30,000

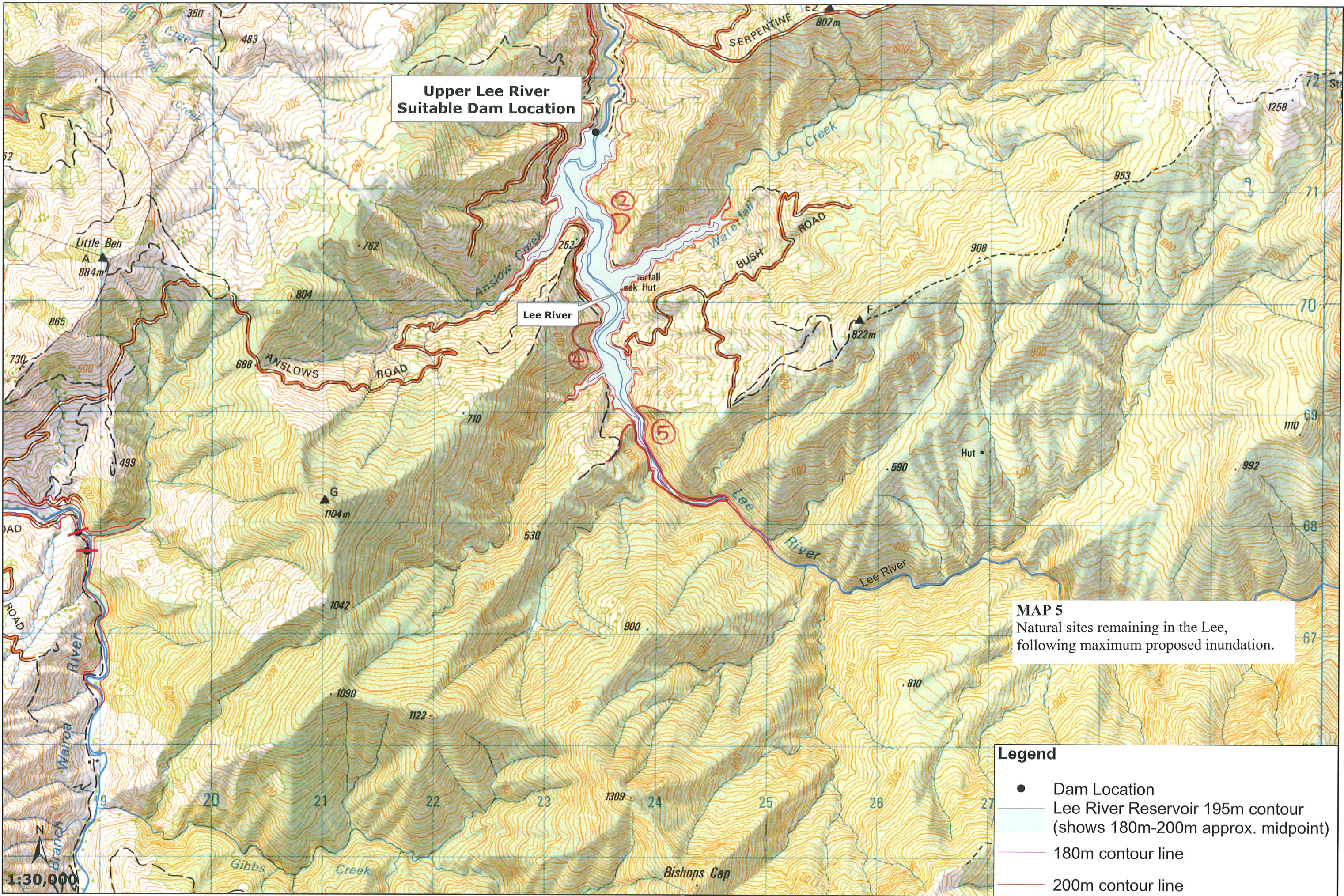


Suitable Dam Location, Upper Lee River



Waimea Water Augmentation Committee
March 2006

Sourced from Land Information New Zealand data. Crown Copyright reserved. Aerial photography copyright Terralink International limited. Rural Imagery flown Dec2000-Apr2002. Urban Imagery flown Jan2003. The information on this map is prepared for indicative use only and is not intended for definitive legal, location or formal reference purposes. Printing Date: March 8, 2006. File: LeeRiverDamLocationTopoMar06.mxd



**Upper Lee River
Suitable Dam Location**

Lee River

MAP 5
Natural sites remaining in the Lee,
following maximum proposed inundation.

- Legend**
- Dam Location
 - Lee River Reservoir 195m contour (shows 180m-200m approx. midpoint)
 - 180m contour line
 - 200m contour line

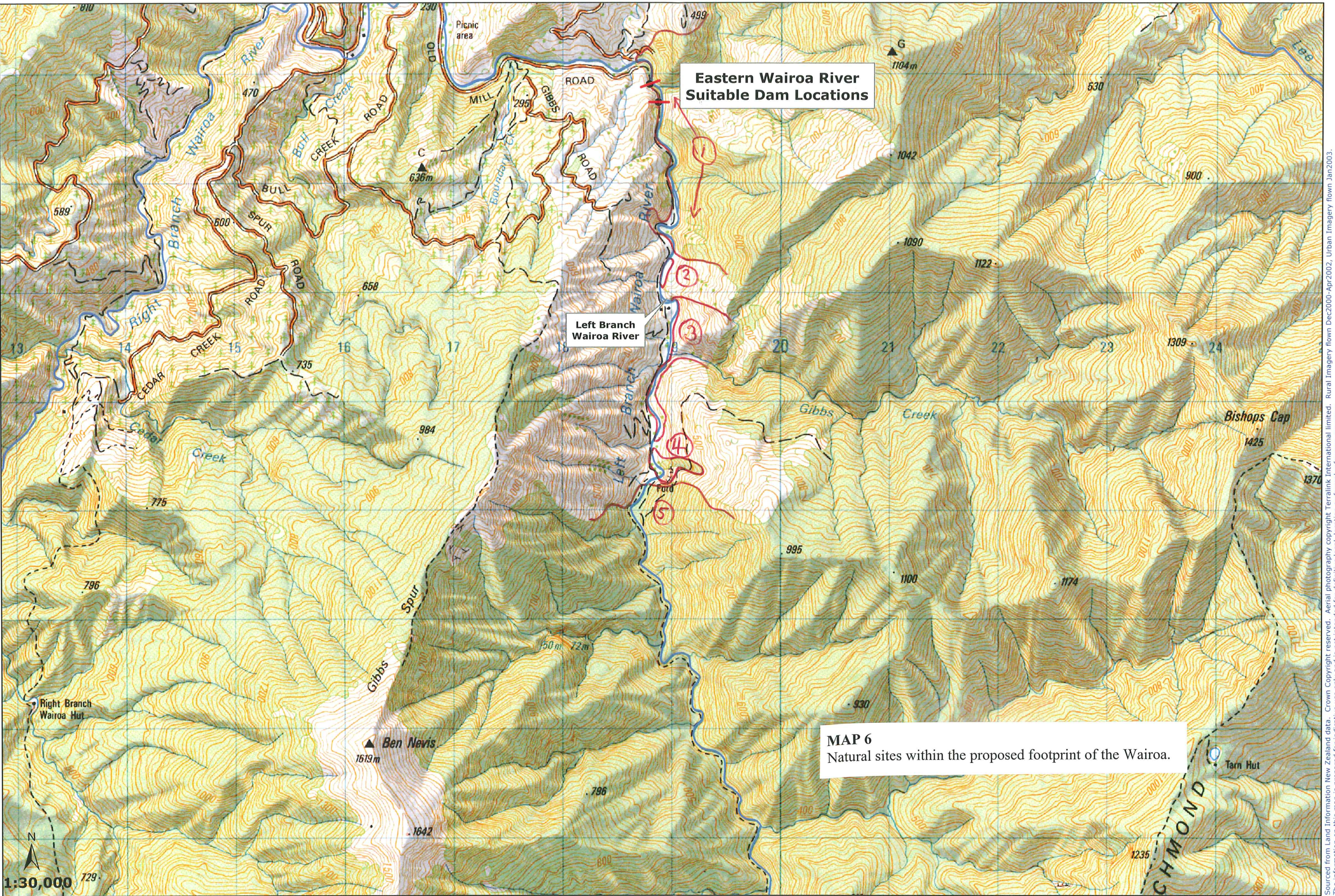
1:30,000

Suitable Dam Location and Indicative Reservoir Levels, Upper Lee River

Waimea Water Augmentation Committee
March 2006



Sourced from Land Information New Zealand data. Crown Copyright reserved. Aerial photography copyright Terralink International limited. Rural Imagery flown Dec2000-Apr2002, Urban Imagery flown Jan2003. The information on this map is prepared for indicative use only and is not intended for definitive legal, location or formal reference purpose. Printing Date: March 8, 2006, File: \LeeRiverDamLocationMar06.mxd



**Eastern Wairoa River
Suitable Dam Locations**

**Left Branch
Wairoa River**

MAP 6
Natural sites within the proposed footprint of the Wairoa.

1:30,000

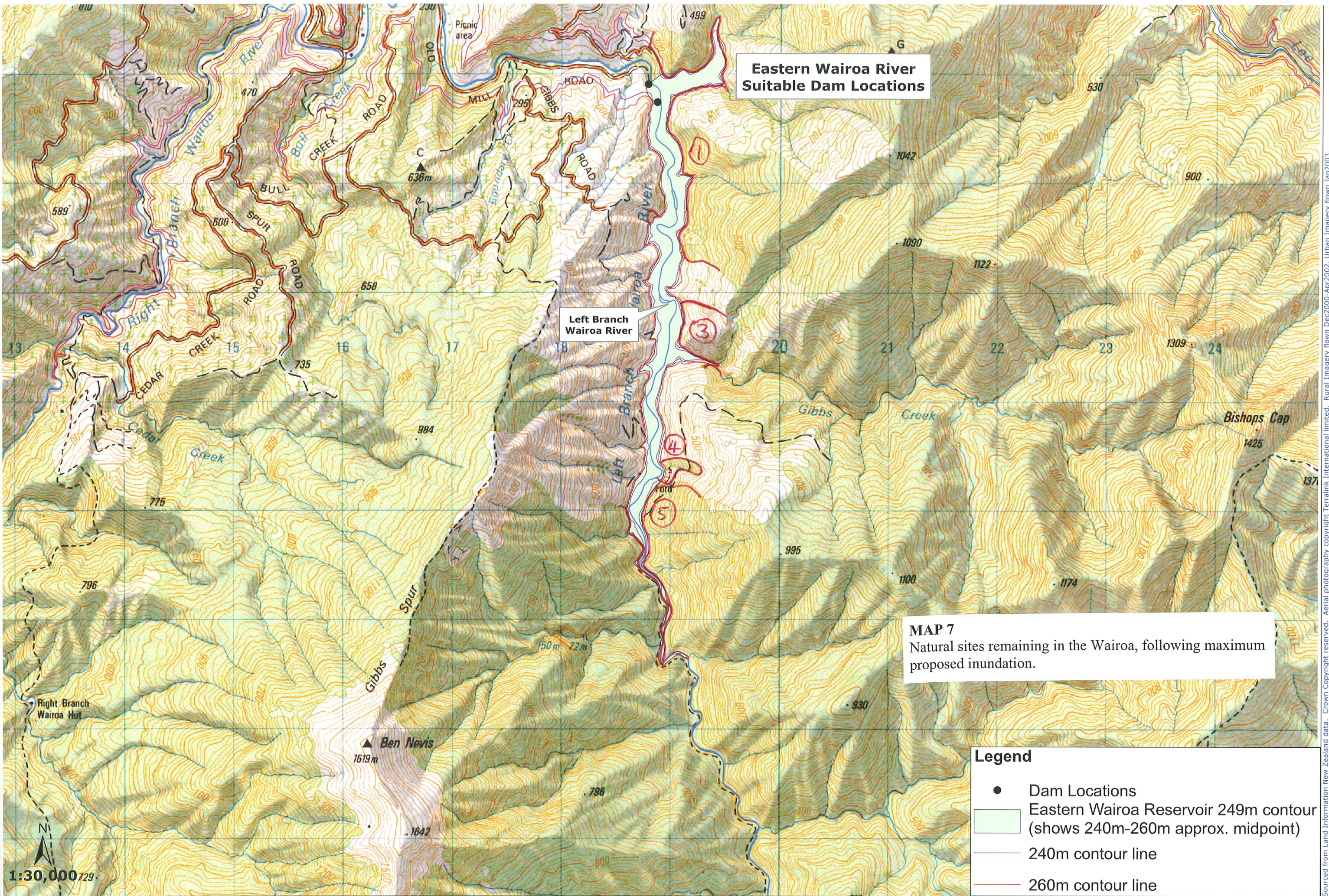
Suitable Dam Locations, Eastern Wairoa River



Waimea Water Augmentation Committee
March 2006



Sourced from Land Information New Zealand data. Crown Copyright reserved. Aerial photography copyright Terralink International limited. Rural Imagery flown Dec2000-Apr2002, Urban Imagery flown Jan2003. The information on this map is prepared for indicative use only and is not intended for definitive legal, location or formal reference purposes. Printing Date: March 8, 2006, File: WairoaRiverDamLocationTopoMar06.mxd



**Eastern Wairoa River
Suitable Dam Locations**

Left Branch
Wairoa River

MAP 7
Natural sites remaining in the Wairoa, following maximum proposed inundation.

- Legend**
- Dam Locations
 - Eastern Wairoa Reservoir 249m contour (shows 240m-260m approx. midpoint)
 - 240m contour line
 - 260m contour line

1:30,000 729

Suitable Dam Locations and Indicative Reservoir Levels, Eastern Wairoa River



Sourced from Land Information New Zealand data. Crown Copyright reserved. Aerial photography copyright Terralink International limited. Rural Imagery flown Dec2000-Apr2002, Urban Imagery flown Jan2003. The information on this map is prepared for indicative use only and is not intended for definitive legal, location or formal reference purposes. Printing Date: March 8, 2006. File: WairoaRiverReservoirMar06.mxd